

AREA STATEMENT			
BASMENT FLOOR	688 SQM		
GROUND FLOOR	348 SQM		
FIRST FLOOR	348 SQM		
TOTAL	1488 SQM		
R E V I S I O N S			
NO.	DATE	DESCRIPTION	BY
01	10-01-2016	ISSUED	
02	20-01-2016	REVISION	
03	20-01-2016	REVISION	
04	20-01-2016	REVISION	
05	20-01-2016	REVISION	
06	20-01-2016	REVISION	
07	20-01-2016	REVISION	
08	20-01-2016	REVISION	
09	20-01-2016	REVISION	
10	20-01-2016	REVISION	
11	20-01-2016	REVISION	
12	20-01-2016	REVISION	
13	20-01-2016	REVISION	
14	20-01-2016	REVISION	
15	20-01-2016	REVISION	
16	20-01-2016	REVISION	
17	20-01-2016	REVISION	
18	20-01-2016	REVISION	
19	20-01-2016	REVISION	
20	20-01-2016	REVISION	



HITE

HLI TRIP TECH SERVICES LTD

(A fully owned subsidiary of HLI, Lebanon Ltd.)
(A Government of India Company)
THIRUVANANTHAPURAM-6
TEL: 0471-2368772, 2368773
FAX: 0471-2368144
web : www.hitecsl.com

PROPOSED C.I.D. MACHINE
MANUFACTURING UNIT AT
AKKODIAM

SECTIONS

ARCHITECTURAL DRAWING

DATE: 01.04.2016

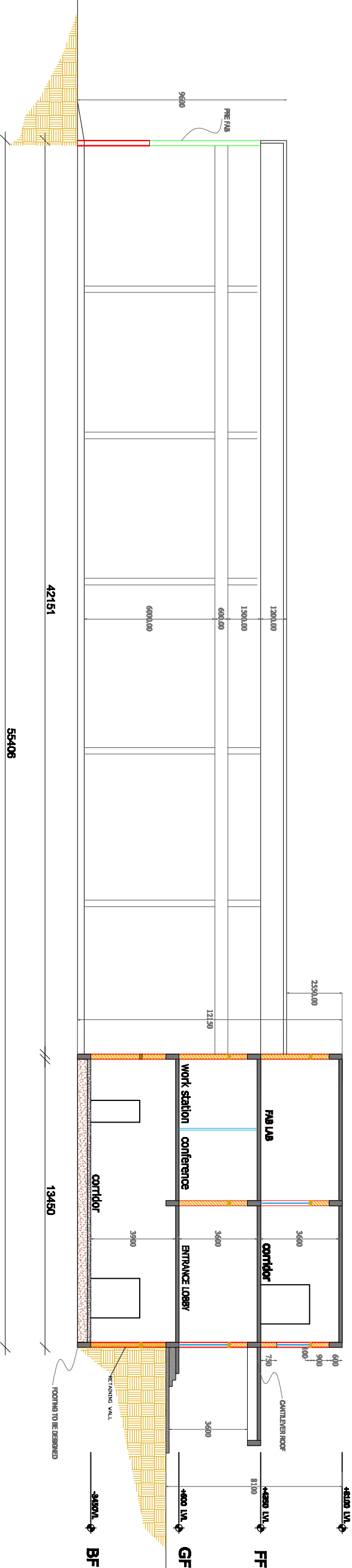
SCALE: 1:200

DRG. NO.

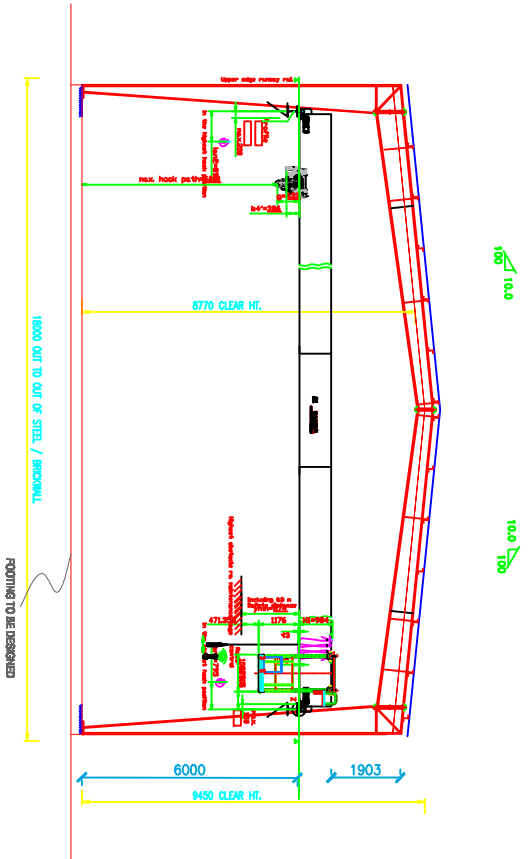
BT/IND/CD/MANU/AR/2015-16/16

ARCHITECT

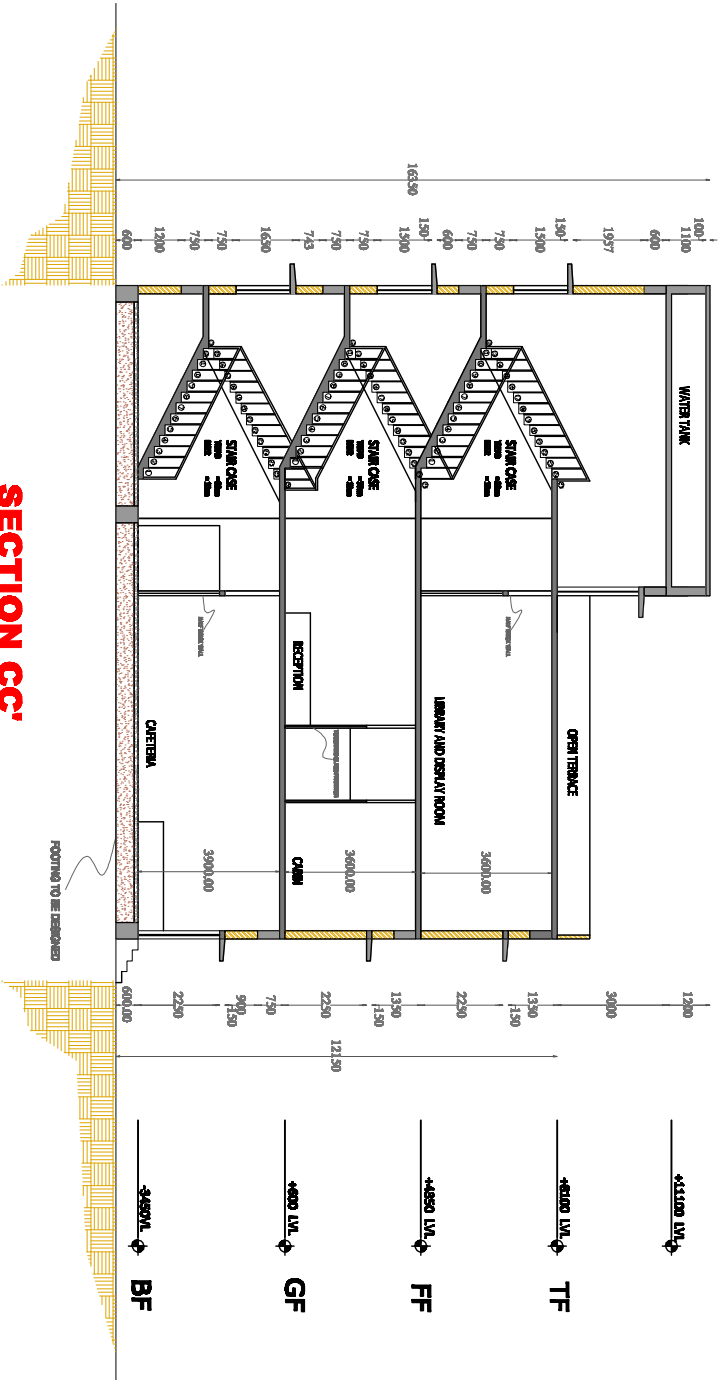
- NOTES
1. ALL DIMENSIONS ARE IN METERS
 2. DO NOT SCALE THE DRAWING
 3. DIMENSIONS GIVEN IN BRACKETS ARE FOR INFORMATION ONLY. NO DIMENSIONS OR CENTER DIMENSIONS WITHOUT COMMENT



SECTION AA'



SECTION BB'



SECTION CC'