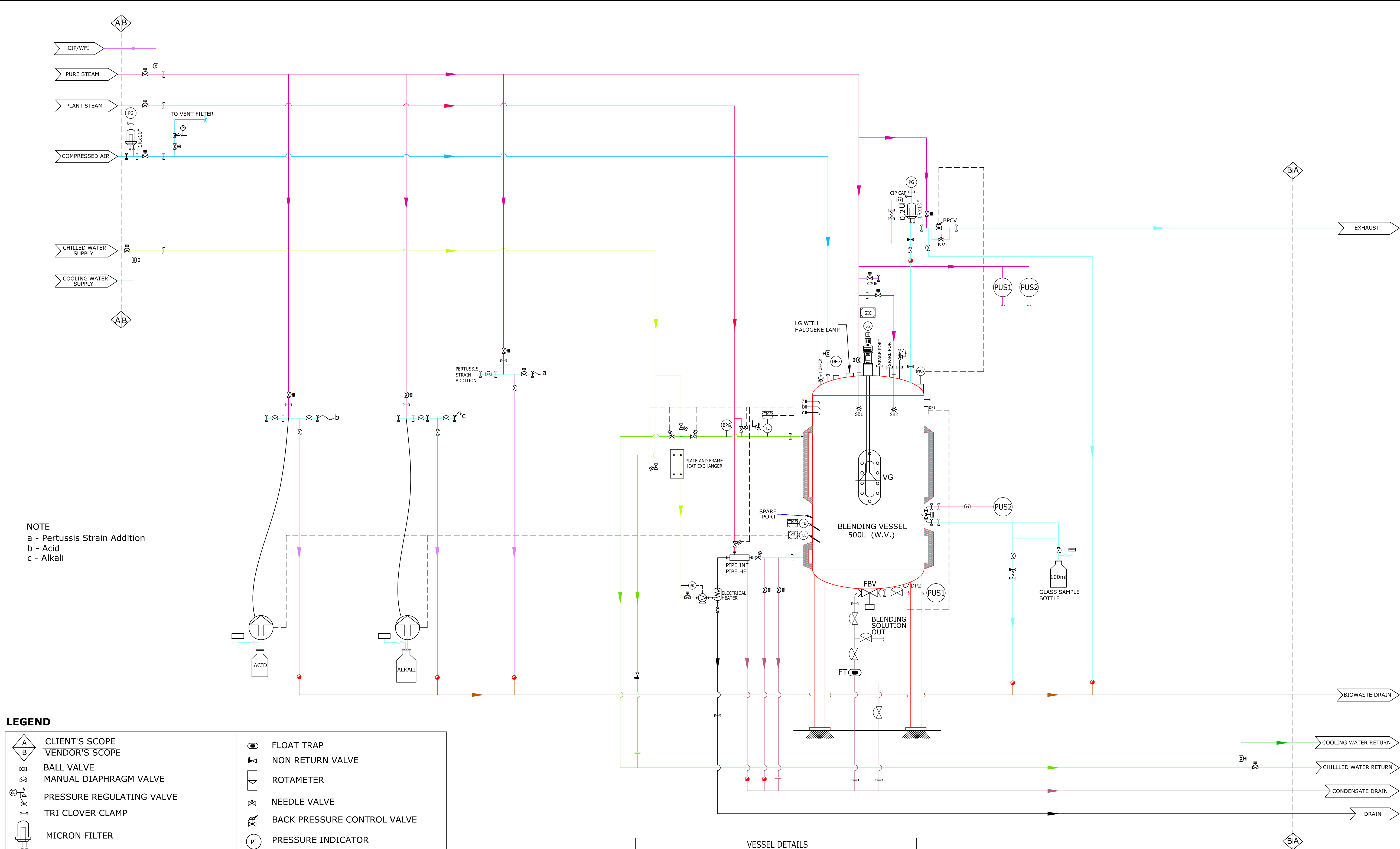


THE INFORMATION CONTAINED HEREIN IS CONFIDENTIAL AND NOT FOR PUBLICATION. BEING THE PROPERTY OF NNE PHARMAPLAN INDIA LIMITED, THE INFORMATION IS ISSUED ON THE UNDERSTANDING THAT NO PART THERE OF SHALL BE COPIED OR COMMUNICATED TO A THIRD PARTY WITHOUT AUTHORISATION IN WRITING FROM NNE PHARMAPLAN INDIA LIMITED.



NOTE
a - Pertussis Strain Addition
b - Acid
c - Alkali

LEGEND

	CLIENT'S SCOPE		FLOAT TRAP
	VENDOR'S SCOPE		NON RETURN VALVE
	BALL VALVE		ROTAMETER
	MANUAL DIAPHRAGM VALVE		NEEDLE VALVE
	PRESSURE REGULATING VALVE		BACK PRESSURE CONTROL VALVE
	TRI CLOVER CLAMP		PRESSURE INDICATOR
	MICRON FILTER		FLOW SWITCH
	DIAPHRAGM PRESSURE GAUGE		PUS TO FBV
	STEAM TRAP		PUS TO SV
	ANGLE SEAT VALVE		CIRCULATION PUMP
	PNEUMATIC DIAPHRAGM VALVE		DIFFERENTIAL PRESSURE SENSOR PORT
	TEMP. INDICATOR CONTROLLER RECORDER		LIGHT GLASS
	TEMP. ELEMENT		VIEW GLASS
	PERISTALTIC PUMP		SPRAY BALL
	FLEXIBLE HOSE		BUTTERFLY BALL
	PNEUMATIC FLUSH BOTTOM VALVE		BACK PRESSURE CONTROL VALVE
	PNEUMATIC SAMPLING VALVE		
	BOURDON PRESSURE GAUGE		
	PRESSURE RELIEF VALVE		

CHWR SUPPLY
CHWR RETURN
COOLING WATER SUPPLY
COOLING WATER RETURN
COMPRESSED AIR
PURE STEAM
PLANT STEAM
CIP
EXHAUST GAS
NITROGEN GAS
BIOWASTE DRAIN
DRAIN
CONDENSATE DRAIN

VESSEL DETAILS	
G.V	750L
MAX. W.V	500L
QTY	1 No.
H/D RATIO	1.2:1.0
MOC PRDOUCT CONTACT	SS316L
MOC PRDOUCT NON-CONTACT	SS304
JACKET	HOLLOW TYPE
INSULATION	MINERAL WOOL
BAFFLE	1 No.
AGITATOR	TOP MOUNTED VIBRO MIXER
LEG	3 NOS

NOTE : THIS P&ID IS ONLY FOR INFORMATION. ACTUAL P&ID HAVE TO BE PROVIDED BY THE VENDOR

Rev.	Date	Changed	Checked	Kind of revision	No. Of Prints	Date	Issued To
File name : Originated From Drg. No : NPI/110831/.....-Rev 00 [Option -00] Dt. 00.00.00							
Project: HLL LIFECARE LIMITED. PASTEUR INSTITUTE OF INDIA, COONOOR				Project No.: 110831		Location COONOOR	
Description: P& ID FOR 750L (G.V) BLENDING VESSEL PERTUSSIS BLOCK				Date	Name	NNE Pharmaplan India Limited	
				Drawn	04.02.2013	SAPL	
				Checked	04.02.2013	DIVH	
				Approved	04.02.2013	NVNG	
				Scale- NTS	Units : mm	Size : A3	
				Drawing no:	NPI/110831/EQP(PID)/B1/P1-BLV-01		Rev.
							00