



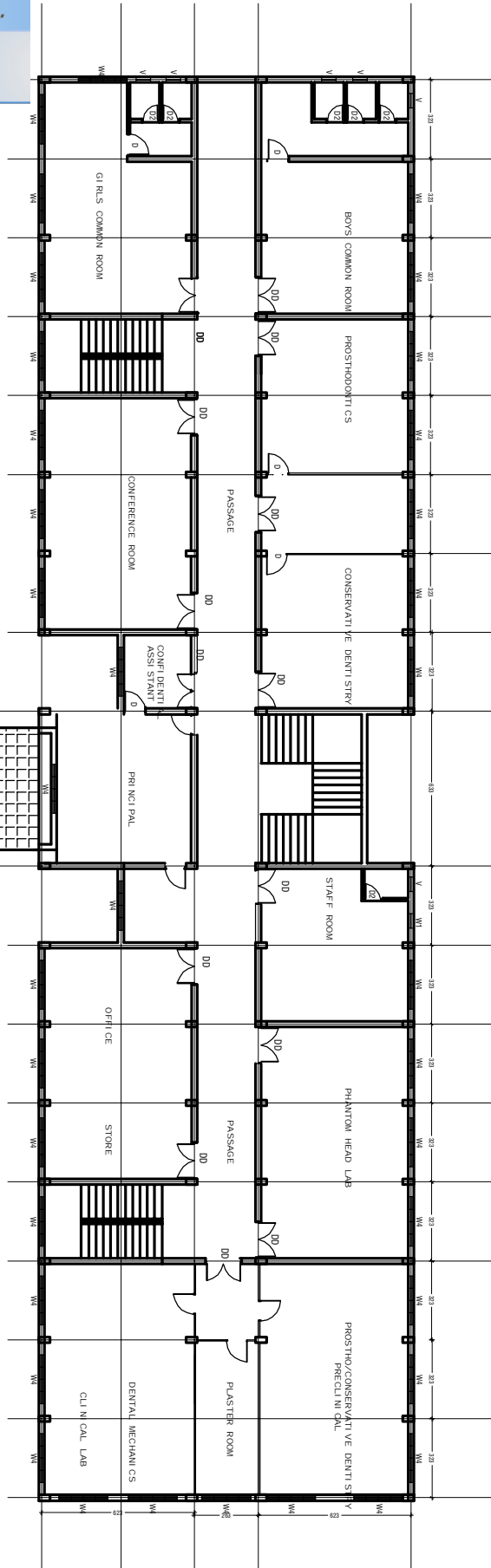
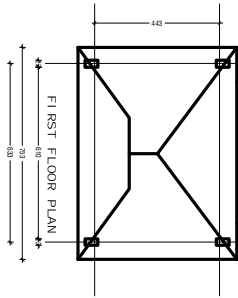
PDF
Complete

Your complimentary
use period has ended.
Thank you for using
PDF Complete.

Click Here to upgrade to
Unlimited Pages and Expanded Features

PRODUCED BY AN AUTODESK EDUCATIONAL PRODUCT

PROPOSED DENTAL COLLEGE, ALAPPUZHA



ALL DIMENSIONS IN CM

CONSULTANTS H L L LIFE CARE LTD. A Government of India Enterprise INFRASTRUCTURE DEVELOPMENT DIVISION VETTAMURUKU TIRUVANANTHAPURAM TEL: 0471-2563976	PROJECT: PROPOSED DENTAL COLLEGE AT NEW PARAMEDICAL BLOCK, ALAPPUZHA		REVISION		DRAWING NO.
	DRAWING: FIRST FLOOR PLAN				
	DRAWN BY:	SCALE: NTS			SIGNATURE