



HLL LIFECARE LIMITED
(Formerly Hindustan Latex Limited)
(A Government of India Enterprise)

KANAGALA

BELGAUM DIST. PIN – 591 225

KARNATAKA STATE

PH.NO: 08333-279240, 279244. FAX: 08333-279245.

Website: www.lifecarehll.com

**E-mail: purchasekfb@lifecarehll.com
purchasenfk@gmail.com**

TENDER NO. HL:BG:PS:HT PANEL:2014-15

TENDER DOCUMENT

FOR

HT PANEL WITH VCB'S FOR 11 KV

Last Date and Time for Receipt of Technical & Price Bid : 06-NOV-2014 up to 17:00 Hrs.

Date and Time of Opening of Technical Bid : 07-NOV-2014, 10:30 Hrs.

Date and Time of Opening of Price Bid : Will be intimated later.

NOTICE INVITING TENDER (NIT)

HLL Lifecare Limited (Formerly Hindustan Latex Ltd), India's leading Manufacturers and Marketers of Contraceptive, Health Care and Pharma Products is a Mini Ratna Company.

HLL Lifecare Limited (Formerly Hindustan Latex Ltd), a PSU under the Ministry of Health & Family Welfare, Govt. of India invites Sealed & Superscribed Tenders under **Two Bid System (Technical & Price)** in the prescribed forms enclosed from Manufacturers / Authorized Dealers for the supply, erecting and commissioning of **HT PANEL WITH VCB'S FOR 11 KV** at our Factory site at Kanagala, Belgaum Dist (Karnataka).

Specifications and Terms & Conditions etc. are detailed in Tender Documents. NIT / Tender Documents / NIT can be had from our Office on any working day between 11:00 AM to 3:30 PM by paying ₹ 500/- by Cash / DD (inclusive of ST) drawn in favor of HLL LIFECARE LTD, payable at State Bank of India, NIPANI – 591 237. Further, **Tender Documents can also be downloaded from our website: www.lifecarehll.com**. However cost of Tender Documents i.e. ₹ 500/- in the form of DD should be enclosed along with Technical Bid.

NAME OF THE ITEM	QTY. REQUIRED (SET)
HT PANEL WITH VCB'S FOR 11 KV	01
HT Panel equipped with Vacuum Circuit Breakers (VCB), Safety Relays & Meters etc. Specifications as detailed in ANNEXURE AN2 & AN3.	

- 1. Last date for Receipt of Technical & Price Bid : 06.11.2014 (17:00 Hrs.)**
- 2. Opening of Technical Bid : 07.11.2014 (10:30 Hrs.)**
3. In the event of the date/s mentioned above being declared subsequently as holiday/s for the Purchaser's Office, the due date for meeting, submission and opening of bids will be the next working day at the same venue and time.
4. Addendums / Amendments issued if any to this NIT / Tender Documents shall be part of this NIT / Tender Documents and shall be published in our website specified above. It is Bidders responsibility to keep themselves updated on any such Addendums / Amendments issued, if any.
5. In order to provide reasonable time to the Prospective Bidders to take necessary action in preparing their Tenders / Bids as per the Addendums / Amendments, HLL may, at its discretion extend the deadline for the submission of Tenders / Bids and other allied time frames, which are linked with that deadline.
6. **Earnest Money Deposit (Refundable):** An amount of ₹ 25,000/- by DD drawn in favor of **"HLL LIFECARE LTD"** payable at State Bank of India, NIPANI – 591 237 towards EMD should be enclosed along with the Technical Bid only. The EMD will be refunded to the Bidder if his Tender is not accepted but without any interest.

7. **Tender Cost (Nonrefundable):** An amount of ₹ 500/- (inclusive of S.T.) by DD drawn in favor of "HLL LIFECARE LTD" payable at State Bank of India, NIPANI – 591 237 towards cost of Tender Form should be enclosed along with the Technical Bid only.
8. **Exemption: SSI Units / Bidders** who are currently registered and also will continue to remain registered during the Tender Validity Period with **DIC or NSIC** for the specific goods as per the NIT Specification shall be eligible for exemption from payment of Tender Cost and EMD **on submission of Valid Copy of their Registration Certificate duly renewed along with the Technical Bid.**
9. **Technical Bids received without enclosures of EMD & Tender Cost OR Valid Copy of Registration Certificate duly renewed from concerned DIC / NSIC will be summarily rejected.** Please note that HLL Lifecare Ltd. will not be responsible for any delay in submission of Tender.
10. Acceptance / Rejection of the Tender is entirely at the discretion of HLL.

DEPUTY GENERAL MANAGER (PURCHASE)

1) FORMATS FOR TECHNICAL BID

- a) INSTRUCTIONS TO THE BIDDERS (ANNEXURE AN1)
- b) SLD OF HT 11 KV PANEL
- c) USER REQUIREMENT SPECIFICATION FOR HT PANEL WITH VCB'S FOR 11 KV (ANNEXURE AN2)
- d) QUALIFICATION CRITERIA (ANNEXURE AN3)
- e) DECLARATION ACCEPTING TERMS AND CONDITIONS OF THE TENDER (ANNEXURE AN4)
- f) FORMAT FOR MANUFACTURERS AUTHORIZATION FORM (ANNEXURE AN5)
- g) GENERAL CONDITIONS FORMING PART OF THE BID

2) FORMS FOR PRICE BID

- a) SCHEDULE - A: PRICE BID / RATE SCHEDULE
(WITH TERMS & CONDITIONS)

NOTE: Technical Bid & Price Bid forms shall be submitted in Separate Covers.

How to send the Bid:

Both the Bids i.e. Technical Bid & Price Bid shall be submitted in sealed covers separately. Technical Bid & Price Bid shall be superscribed on the respective covers in order to clearly identify between the 2 Bids. The two separately marked Bids enclosed in single sealed cover with Tender NO. Complete in all respect addressed to The Deputy General Manager (Purchase), HLL Lifecare Ltd., Kanagala - 591 225 Dist. Belgaum, Karnataka State should reach us on or before the due date and time mentioned in the NIT.

CONTENTS OF THE BIDDING DOCUMENTS:

1. Technical Bid:

- a) DD for ₹ 25,000/- towards EMD / Valid Copy of Registration Certificate duly renewed from concerned DIC / NSIC.
- b) DD for ₹ 500/- towards Tender Cost / Valid Copy of Registration Certificate duly renewed from concerned DIC / NSIC.
- c) USER REQUIREMENT SPECIFICATION FOR HT PANEL WITH VCB'S FOR 11 KV (ANNEXURE AN2) **duly signed and sealed.**
- d) QUALIFICATION CRITERIA (ANNEXURE AN3) **duly filled, signed and sealed.** Details shall be enclosed as required by us.
- e) DECLARATION ACCEPTING TERMS AND CONDITIONS OF THE TENDER (ANNEXURE AN4) (on the letterhead of the Bidder firm).
- f) FORMAT FOR MANUFACTURERS AUTHORIZATION FORM (ANNEXURE AN5) (on the letterhead of the Manufacturing firm).
- g) GENERAL CONDITIONS FORMING PART OF THE BID **duly signed and sealed.**

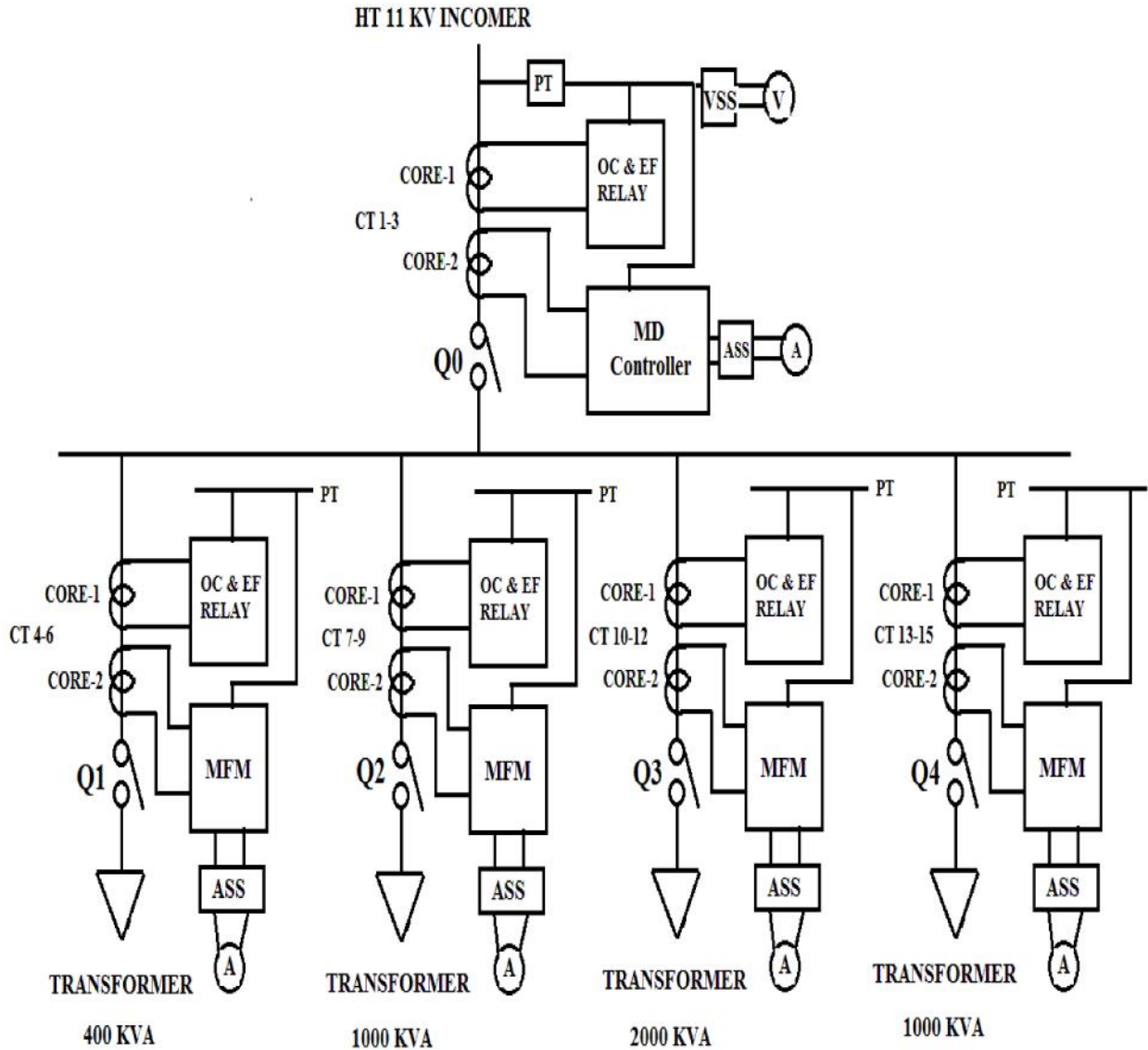
2. Price Bid:

- a) SCHEDULE – A: Price Bid **duly filled, signed and sealed.**
- b) Terms & Conditions of Price Bid **duly signed and sealed.**

INSTRUCTIONS TO THE BIDDERS
ANNEXURE AN1

1. The Quotation must be in Two Parts i.e., **A. Technical Bid** and **B. Price Bid**.
2. The Bidder is expected to examine all Specifications, Instructions, Forms, and Terms & Conditions given in the Bidding Documents. Failure to furnish all information required in the Bidding Documents or submission of a Bid not substantially responsive to the Bidding Documents in every respect will be at the Bidders risk and may result in rejection of the Bid.
3. Any clarification required will have to be obtained one week prior to the Date of opening of the Technical Bid. **For any technical clarifications please feel free to contact our Mr. B.I. Mavinkatti / Mr. M.Y. Satare at mail id: bimhll@lifecarehll.com / sataremy@lifecarehll.com OR Cell NOS.09483041879 / 09880614428 respectively.**
4. Addendums / Amendments issued if any to this NIT / Tender Documents shall be part of this NIT / Tender Documents and shall be published in our website specified above. It is Bidders responsibility to keep themselves updated on any such Addendums / Amendments issued, if any.
5. In order to provide reasonable time to the Prospective Bidders to take necessary action in preparing their Tenders / Bids as per the Addendums / Amendments, HLL may, at its discretion extend the deadline for the submission of Tenders / Bids and other allied time frames, which are linked with that deadline.
6. Both, Technical Bid and Price Bid must be furnished in two separate sealed & super scribed covers.
7. Bids received after the deadline for submission shall not be considered.
8. **Technical Bid** must be furnished as shown in the **Contents of Bidding Documents @ SI. NO.1** mentioned above and must be super scribed as **"Technical Bid – HT PANEL WITH VCB'S FOR 11 KV Ref: Tender NO.HL:BG:PS:HT PANEL:2014-15 / 14.10.2014"**.
9. **Price Bid** must be furnished as shown in the **Contents of Bidding Documents @ SI NO.2** mentioned above i.e., in **SCHEDULE - A: PRICE BID** and must be super scribed as **"Price Bid - HT PANEL WITH VCB'S FOR 11 KV Ref: Tender NO.HL:BG:PS:HT PANEL:2014-15 / 14.10.2014"**.
10. Technical Bids and Price Bids those are not submitted in two separate sealed & super scribed covers are liable for rejection.
11. **Enclose additional sheets, if necessary, to highlight the deviations from the Technical Bid and Price Bid. Provide proper reference to these additional sheets in the Technical Bid and Price Bid.**
12. The Evaluation of the Technical Bid is carried on the Responses given in the Technical Bid.
13. Price Bid of a particular Bidder would be considered for opening only if their Technical Bid is qualified. **The date & time of opening of Price Bid will be intimated separately.**
14. The Price Bid of those Bidders who do not qualify will be returned unopened.
15. Acceptance / Rejection of the Tender is entirely at the discretion of HLL.
16. **Bids received by FAX / E-MAIL will not be considered.**

SLD OF HT 11 KV PANEL



Note: For detailed Specifications, please refer Annexure AN2 & AN3

TITLE	HT 11 KV PANEL.
DRAWN	OFFICER (ELECT)
APPROVED	MGE (ELECT) / DGM (E & IT)
PAGE	1 OF 1

**USER REQUIREMENT SPECIFICATION FOR HT PANEL WITH VCB'S FOR 11 KV
ANNEXURE AN2**

1. Component Details for Incomer and Outgoing Feeders

Sr No	Name of Item	Item Description	Incomer	Outgoing	Total
1	Panel Cubicle	As per Specification provided			1
2	VCB	VCB, 11kV, 800A, 3 Pole, 26.2kA for 3Sec, Electrically Operated Drawout Type with 6NO+6NC Aux. Contacts. With Limit Switches for Test & Service Position.	1	4	5
3	VCB Accessories	Spring charging motor : 230V AC	1	4	5
		Shunt trip coil : 24V DC	1	4	5
		Closing coil : 24V DC	1	4	5
4	Potential Transformer	PT, 1 Phase, Resin cast, Drawout type, 11kV/rt3/110V/rt3, with provision for fuse mounting, with class-B insulation Voltage Factor: 1.2 Continuous & 1.9 for 30 Secs, CL:1.0, 100VA.	3	0	3
5	Current Transformer	CTs, Dual core, 11kV, Resin cast, WPL Type, CTR: (As required) /1-1A, STC-26.2kA for 3sec. a) Core 1: Cl: 1.0, 10VA, b) Core 2: Cl: 5P20, 15VA.	3	12	15
6	Meters	Maximum Demand Controller with minimum 4 outputs. One output for alarm and three to trip respective outgoing VCB. All four outputs shall be settable though program, RS485 Communication Port. With Connector Kit. Model: Goblin, Make: Trinity	1	0	1
		Digital Multi Function Meter, 96Sq.mm 3Ph, 3Wire, PTR: 11kV/rt3/110V/rt3, Aux. Supply: 110V AC, CT Sec: 1Amps, Cl: 1.0, With Maximum demand & RS485 Communication Port. With Connector Kit	0	4	4
		3Ph. Analogue, AC Ammeter, 96Sq.mm, 0-125A, CTR: 125/1Amps, Cl:1 With selector Switch.	1	4	5
		3Ph. Analogue, AC Voltmeter, PTR: 11kV/rt3/110V/rt3, 96Sq.mm,0-12kV, Cl:1 With selector Switch.	1	0	1
7	Relays	Digital Numerical Relay for over current and earth fault with Instantaneous protection, flush mounting, CT Sec: 1A, 24V DC Aux. Supply With RS-485 Communication Port TYPE: MC 61A A 11 00 0	1	4	5
		Master Trip Relay, 24V DC Aux. Supply with 4NO+3NC Aux. Contacts	0	4	4
		Trip Circuit Supervision Relay, 24V DC Aux. Supply with 1NO+2C/O+1NC Aux. Contacts.	1		1
		Anti pumping Relay, Flush/Base Mounting Type 24V DC Coil with 2NO Aux. Contacts,	0	4	4

		Auxiliary relay for transformer faults ,24V DC,TWO element with 4NO Aux. Contacts		16 (4 for each transformer)	16
8	Indicating Lamps	Indicating lamp, 22.5mm Dia, LED Type.	As required		
9	Push Buttons	Push buttons, 22.5mm Dia,	As required		
10	Emergency Stop Push Buttons	Emergency Stop, Mushroom Head With Turn to release Feature, Red, 22.5mm DIA, LED inbuilt.	1	4	5
11	Switches	Breaker Control Switch, 16A, spring Return.	1	4	5
		Local/Remote Selector Switch 10A, 72Sq.mm.	1	4	5
		24V DC Source Selector Switch 10A, 48Sq.mm	1	4	5
12	Auxiliary Contactors	Aux. contactor, 24V DC Coil / 230 V AC Coil with 2NO+2NC Aux. Contacts	As required		
13	Auxiliary Relay	Plugin Type Aux. Relay, 2C/O, 24V DC Coil / 230 V AC Coil, Base mounting Type.	As required		
14	MCB	MCB, 10kA, ' C ' Curve.	As required		
15	Other Items	Static Alarm Annunciator, 12 Windows, in 2D Case 24V DC Aux. Supply. With builtin Test/Accept/Reset/Mute Pushbutton	1	4	5
		Power supply of 24 V (Battery 12 V, 42 AH, Sealed Maintenance Free (SMF), 2 nos) with Battery Charger of rating 230V AC Input, 24V DC Output, 10A	1	0	1
		Hooter for Faults , 24V DC, 96Sq.mm	1	0	1
		Electronic bell, 230V AC, 96Sq.mm	1	0	1
		PT Fuses 11KV, 3A	3	0	3
		Modular type socket, 3 Pin, 15A	1	4	5
		Panel illumination lamp: 230V AC, 5 Watts, CFL TYPE	1	4	5
		Door Limit Switch, 230V AC,1NO+1NC	1	4	5

2. Scope of Party

- a. Design, Supply, Installation, Commissioning (along with the termination of the HT cables) and Testing of the HT Panel as per the Specs and SLD given.
- b. Transportation of panels to the Site
- c. Supervision of unloading of the HT Panel
- d. Obtaining Employer's written acceptance of satisfactory performance
- e. Any civil work required to be done towards the finishing of the work during the installation of the HT Panel.
- f. Terminations and glanding of all the incoming and outgoing HT cables.
- g. Party has to supply following documents within 10 days after receipt of Purchase Order and before start of the fabrication work for the approval.
 - i. Details Electrical Control Drawing
 - ii. Single Line Diagram
 - iii. GA Drawing
 - iv. BOQ of the panel
- h. Party can contact to DGM (E/I) / Manager (Electrical) or visit to site for further clarifications if required.

3. Codes and Standard

- a. The HV switchgear Panel and components shall confirm to the latest applicable standard.

- b. All critical components shall also conform to the latest Electricity rules as regards safety and other essential provisions.
- c. All Electrical installation work shall comply with the requirements of the following Act/Rules/Codes as amended up to date:
 - i. Indian Electricity Act
 - ii. Indian Electricity Rules
 - iii. National Electric Code published by BIS
 - iv. All relevant IS codes of practice
 - v. Regulations published by Tariff Advisory Committee
- d. Nominal system supply available shall be as follows,
 - i. Incoming: 11 kV, 3 Phase, 3 Wires, 50 Hz
 - ii. Utilization: 415V, 3 Phase, 4 Wires, 50 Hz

4. Panel Fabrication and Painting

- a. HT Panel cubicles should be metal clad, free standing, floor mounting flush fronted with base frame and arranged to form a single structure with a common busbar assembly.
- b. Switchgear shall be arranged to permit future extension at either end.
- c. Structures including doors and panels shall be capable of withstanding internal pressure created by faults.
- d. Interlocks, busbar shutters, covers etc shall be provided to prevent incorrect or unsafe operation and to prevent access to live parts.
- e. Switchgear shall be designed and constructed to facilitate inspection, cleaning, repair and maintenance and to ensure absolute safety during operation, inspection and maintenance.
- f. It shall be possible to open and close the breaker compartment doors with rubber mats laid in front of switchgear.
- g. Similar parts and components shall be interchangeable.
- h. All the hardware shall be corrosion resistant.
- i. Details of Sheet Gauges
 - i. Material: CRCA Sheet Steel
 - ii. Thickness of sheet steel in mm
 - Frame enclosure: 2.5 mm
 - Doors, Covers: 2.0 mm
 - Partitions: 1.6 mm
 - Gland Plate: 3.0 mm
 - iii. Front Door: Hinged
 - iv. Rear Door: Bolted
 - v. Maximum Height of the Panel: 2500 mm
 - vi. Maximum Operating Height: 1800 mm
 - vii. Degree of Protection: IP 42
- j. Painting
 - i. Seven Tank Treatment
 - ii. Epoxy Powder coated, finish not less than 90 micron
 - iii. RAL 7032 Color Shade

5. Control Wiring

- a. Inside the cubicle the wiring for control, indication, signaling, protection and instrument circuits shall be done with PVC insulated stranded conductors. The insulation grade shall be 1.1 kV. The wiring shall preferably be enclosed in plastic channels and neatly bunched together.
- b. All inter panel control wiring shall be done by the panel supplier.
- c. All the control wiring should have proper identification and ferrules for ease of troubleshooting. Also it should be suitably sized depending on the requirements.
- d. Proper color-coding should be maintained as per the standard.
- e. Shorting links should be provided for all CT terminals.
- f. All wiring for the external connections shall be brought out to individual terminals on a readily accessible terminal block with proper identifications.

- g. It is under the scope of the party to extend the connections of all the auxiliary relays, provided for the transformer safety (Bucchoz, Oil Temp and Winding Temp) to the respective transformers. Required control cables from HT Panel to transformers will be laid by HLL.

6. Metering, Protection, Control and Indication

- a. Metering, protection and control shall be provided as shown on SLD.
- b. Meters and relays shall be flush mounting and fitted on the front of the switchgear.
- c. Analog instruments shall be white with black numbers and lettering. Dial shall be parallax free.
- d. Ammeter shall be of analog type and shall be provided to all the cubicles.
- e. Voltmeter shall be of analog type and shall be provided to only Incomer Cubicle.
- f. Maximum Demand Controller (with all Electrical Parameters) shall be provided to only Incomer Cubicle. Controller shall have RS 485 communication port.
- g. Digital Multi Function Meter shall be provided to all the outgoing feeders.
- h. Static Alarm Annunciator, 12 Windows, in 2D Case 24V DC Aux. Supply with built-in Test/Accept/Reset/Mute Pushbutton shall be provided to all the cubicles.
- i. Overcurrent and Earth fault relay with RS 485 Communication port shall be provided to all the cubicles.
- j. External zero adjustment / calibration shall be possible on all indicating instruments to facilitate adjustment without dismantling the instrument.

7. Bus bar Sizing, Connection & Supports:

- a. The bus bars shall be of high conductivity electrolytic Aluminum conforming to grade EQIE of IS: 5082.
- b. Buses shall have uniform cross section throughout the length of the panel up to the incoming feeder terminal and shall be sized to carry continuously the current specified.
- c. Bus bars shall be housed in a separate chamber and shall be accessible for inspection.
- d. The bus bars shall be provided with heat shrinkable PVC insulating sleeve of high dielectric strength, which should be non-inflammable & self-extinguishing type and in fast colors to indicate phases. The sleeves shall be rated to withstand the system line-to-line voltage for 1 minute.
- e. All bus bar joints and all tap-off connections from the main horizontal bus bars shall be suitably shrouded.
- f. The bus bars shall be adequately supported by epoxy compound in adequate numbers and size to avoid sag in bus bars and these shall be capable of withstanding stresses due to short circuit currents of the associated switchgear. All bus supports shall be of non-carbonizing material and shall have hygroscopic characteristics. Minimum clearances should be as per relevant IEC standards.

8. Earthing Connection and Cable Earthing

- a. Continuous earth bus bar running throughout the length of the HT panel shall be provided and shall be rated to carry maximum fault current. Earth bus bar shall be located at the bottom of the panel. All metallic non-current carrying parts of the switchgear shall be bonded together and connected to this earth bus bar.
- b. Provision shall be made to connect the earthing bus bar to the plant earthing grid at two ends.
- c. All doors shall be bonded to the main structure by means of a flexible copper connections arranged so that it cannot be trapped as the door is opened or closed.
- d. Provision shall be made for earthing cable screen and armouring to the earth busbar near the gland.
- e. All instruments, relays and other components shall be connected to earth bus bar.
- f. The material of the earth bus bar should be tinned copper.

9. Cable Compartment and Termination:

- a. The cable entry of the panel shall be from the bottom as required.

- b. The panel shall be supplied complete with supports for clamping outgoing and incoming cables. Sufficient space should be given between cable gland plate and terminal lug as per standard.

10. Control And Indication:

- a. Breaker tripping and closing devices shall be operated on DC supply.
 b. Mechanical indication for breaker positions such as ON, OFF, Spring charged, Test Position / Service Position shall be provided. Various indications with colors as indicated below shall be provided for each cubicle:

R1	Red	-R.PH.Live	-63.5V AC
Y1	Yellow	-Y.PH.Live	-63.5V AC
B1	Blue	-B.PH.Live	-63.5V AC
R2	Red	-CB ON	-24V DC
G1	Green	-CB OFF	-24V DC
A1	Amber	-AUTO TRIP	-24V DC
B2	Blue	- Spring Charged	- 24V DC
W1	White	- CB in Test Position	-24V DC
W2	White	- CB in Service Position	-24V DC
W3	White	-Trip Circuit Healthy	-24V DC
A2	Amber	-DC Supply Fail	-230V AC
R7	Amber	-AC Supply on	-230V AC

11. Auxillary Equipments:

- a. Auxillary Relays / Timers / Contactors:
 Auxillary relays / contactors shall generally be used for interlocking and multiplying contacts. Auxillary contacts shall be capable of carrying the maximum estimated current. There rating should not less than 5A, 230 VAC / 5A, 220 VDC.
- b. Tripping Relays
 All tripping relays shall be lockout type with hand reset contacts and shall be suitable to operate on the specified DC Voltage. These relays shall have self coil cut off contacts and shall be provided with hand reset operation indicators.
- c. Miniature Circuit Breakers:
 All the MCBs shall confirm to the latest IS specification IS – 8828 with minimum breaking capacity of 10 KA. MCB should offer overload and shortcircuit protection. All the MCBs should have C class Characteristics.
- d. Indicating Lamps
 All the indicating lamps should be LED cluster type with low watt consumption. Indicating lamps shall be of the double contact type rated for specified voltage and should be of specified color.
- e. Push Buttons
 The push button unit shall comprise of the contact element, a fixing holder and push button actuator. Contact shall of momentary type with rated for specified voltage. Emergency stop push buttons shall be lockable in the operated position. It shall be with the mushroom head with LED inbuilt.
 Push button should be of following colors:
- Stop, Open, Emergency: Red
 - Start, Close: Green
 - Trip Circuit 'Healthy' check: Black
- f. Control and Selector Switch

The control and selector switch shall be of the rotary type, having enclosed contacts, which are accessible by the removal of the cover. Circuit breaker control switches shall be 3 position spring return to neutral from both 'ON' and 'OFF' positions. They shall have 'pistol grip' handle.

- g. Cubicle Lighting:
Each cubicle of switchgear shall be provided with interior lighting by means of a 20 W fluorescent tube lighting fixture with ON-OFF switch. The lighting fixture shall be rated to 240 V, 50 Hz AC Supply.
- h. Power Socket:
A 240 V, single phase, 50 Hz, 15 A AC plug point shall be provided in the interior of each cubicle with an ON – OFF switch for connection of hand lamps.

12. Interlocks and Safety Devices:

- a. All the interlocks required for the safe operation and maintenance of the HT panel shall be provided and has to be demonstrated to during commissioning.
- b. All the live parts should be adequately screened.

13. Name Plate:

- a. HT Panel and components shall be identified by labels. Cubicle and compartment label designations shall be located at front and rear of panel.
- b. A main label (Panel designation) shall be affixed in a prominent position with following minimum requirements:
 - i. Manufacturer's Name
 - ii. Panel Tag number
 - iii. System voltage, phases, wires and frequency
 - iv. Rated fault current and duration
 - v. Busbar rating
 - vi. Year of manufacturing
 - vii. Characters shall be 12 mm high.
- c. Separate name plate for each feeder shall be provided with required details.
- d. Labels shall be affixed on front and back of the cubicles.
- e. All the components inside the panel should be properly labeled for ease of identification.

14. Danger Notice Plate:

- a. The danger plate shall be affixed in a permanent manner on front and rear of the panel.
- b. The danger plate shall indicate danger notice in Hindi, English and Kannada languages with a sign of skull and bones.
- c. The danger plate shall meet the requirements of local inspecting authorities.

15. Drawings and Manuals:

- a. **At Order Stage:** Manufacturer has to forward the following drawings within 10 days after receipt of Purchase Order or letter of intent for the approval of the client. Fabrication work should not be started before the approval of the drawings submitted.
 - i. GA Drawing of panel
 - ii. Electrical Wiring Diagram with Bill of Quantity
 - iii. Detailed Single Line Diagram
 - iv. Technical Catalogue / leaflets all the bought out components.
 - v. Fault Calculation Details
- b. **At Final Order Execution Stage:**
 - i. Two sets of GA Drawing (As built) with soft copy.
 - ii. Two sets of Electrical Wiring Diagram with Bill of Quantity (As built) with soft copy.
 - iii. Two sets of Detailed Single Line Diagram (As built) with soft copy.
 - iv. Routine Test Certificates (including all brought components)
 - v. Two sets of detailed operation manuals
 - vi. Two sets of detailed erection, testing and commissioning manuals / reports.

16. Factory Acceptance Test (FAT):

Vendor shall call the client for the inspection of the panel at two different stages as mentioned below,

- After the fabrication of all the cubicles and before the powder coating.
- After completion of the control wiring, labeling and before the dispatch.
- After the inspection and found compliance representative of the client will give the clearance for the dispatch.

17. List of Approved Makes

Sr No	Components	Make
1	Vacuum Circuit Breaker	ABB
2	Maximum Demand Controller	ABB / Goblin / Trinity
3	Multifunction Meter	Rishabh
4	Analogue Meters	Rishabh
5	Contactor	L & T / ABB / Schneider
6	MCB	Hager / ABB / Schneider
7	LED Type Indicating Lamps	Essbee / Schneider
8	Push Button	Essbee / Schneider
9	Protection Relays	L&T / ABB
10	Selector Switch	Kaycee / Salzer
11	Breaker Control Switch	Kaycee / Salzer
12	CT, PT	Kappa / Kalpa
13	Hooter	Minilec
14	Alarm Annunciator	Minilec
15	Lugs	Dowells

We have read and understood the above Specifications and agree to abide by the same.

Place:

Date:

Signature of the Bidder

Name, Seal and Address of the Bidder

**QUALIFICATION CRITERIA
ANNEXURE AN3**

SI No	Particulars	Response
1	Are you Manufacturer of the HT Panels of rating minimum 11 kV? Please enclose the supporting documents.	
2	Have you supplied, installed and commissioned independently at least 5 HT Panel of rating 11 kV and above with minimum two outgoing feeders in last 3 years? Please enclose the Commissioning Reports for the same.	
3	Can you ensure to attend any sort of breakdown in the HT Panel within 24 hours after receipt of the complaint in the Warranty period?	
4	Have you enclosed the Customer Feedback Forms from at least three satisfied Customers who are using HT Panel supplied by you since last 3 years?	
5	In your Price Bid have you quoted as per the specifications mentioned in Annexure AN2 & Annexure AN3?	
Name and Address of the Bidder along with details of the Tax Registrations:		
Authorized Signatory's Name, Designation and Signature for all correspondence		

We have read and understood the above Specifications and agree to abide by the same.

All the information provided herein is true & correct.

List of Enclosures to Technical Bid:

1. _____
2. _____
3. _____
4. _____

SPECIAL NOTE:

1. The Bid should include specific answers strictly with respect to our Tender Specifications and Specification deviation if any, should be highlighted with clarifications. Otherwise, the Bid will not be considered. **Wherever space is insufficient, please enclose separate sheets.**
2. The Bid along with its enclosures should be furnished with Original only. **Bid received by FAX / E-MAIL will not be considered.**
3. **The Bidder should furnish the quantitative values with respect to specified values in the Technical Specification of the Quote clearly instead of mentioning either "Complied" , "Agreed" or "Confirmed" etc., otherwise, the Tender Quote is liable to be Rejected**

Place:
Date:

Signature of the Bidder
Name, Seal and Address of the Bidder

**DECLARATION ACCEPTING TERMS AND CONDITIONS OF THE TENDER
ANNEXURE AN4**

Date_____

To:
HLL Lifecare Limited
(A Govt. of India Enterprise)
Kanagala – 591225.
Tal: Hukkeri, Dist: Belgaum,
Karnataka, India

Dear Sirs,

Ref. Your TE document No. _____ dated _____

We, the undersigned have examined the above-mentioned TE document, including amendment/corrigendum No. _____, dated _____ (if any), the receipt of which is hereby confirmed. We now offer to supply and deliver _____ (Description of goods and services) in conformity with your above referred document for the sum as shown in the price schedule(s), attached herewith in a separate envelope and made part of this tender.

If our tender is accepted, we undertake to supply the goods and perform the services as mentioned above, in accordance with the delivery schedule specified in the List of Requirements.

We further confirm that, if our tender is accepted, we shall provide you with a performance security of required amount in an acceptable form, for due performance of the contract. We agree to keep our tender valid for the period mentioned in the tender notification. We also accordingly confirm to abide by this tender up to the aforesaid period and this tender may be accepted any time before the expiry of the aforesaid period. We further confirm that, until a formal contract is executed, this tender read with your written acceptance thereof within the aforesaid period shall constitute a binding contract between us.

We further understand that you are not bound to accept the lowest or any tender you may receive against your above-referred tender enquiry.

We confirm that we do not stand deregistered/banned/blacklisted by any Govt. Authorities.

We confirm that we fully agree to the terms and conditions specified in above mentioned TE document, including amendment/ corrigendum if any

(Signature with date)

(Name and Designation) Duly Authorized to sign Tender for and on behalf of M/s. _____

Office Seal

**FORMAT FOR MANUFACTURERS AUTHORIZATION FORM
ANNEXURE AN5**

Date_____

To:
HLL Lifecare Limited
(A Govt. of India Enterprise)
Kanagala – 591225.
Tal: Hukkeri, Dist: Belgaum,
Karnataka, India

Dear Sirs,

Ref. Your TE document No. _____ dated _____

We, _____ who are proven and reputable manufacturers of _____ (name and description of the goods offered in the tender) having _____ factories at _____, hereby authorize M/s. _____ (name and address of the agent) to submit a tender, process the same further and enter into a contract with you against your requirement as contained in the above referred TE documents for the above goods manufactured by us.

We further confirm that no supplier or firm or individual other than M/s. _____ (name and address of the above agent) is authorized to submit a tender, process the same further and enter into a contract with you against your requirement as contained in the above referred TE documents for the above goods manufactured by us.

We also hereby extend our full warranty, CMC as applicable as per General Conditions of Contract, read with modification, if any, for the goods and services offered for supply by the above firm against this TE document.

Yours faithfully,

[Signature with date, name and designation] for and on behalf of M/s. _____

[Name & address of the manufacturer]

Note:

- 1. This letter of authorization should be on the letterhead of the manufacturing firm and should be signed by a person competent and having the power of attorney to legally bind the manufacturer.*
- 2. Original letter may be sent.*

GENERAL CONDITIONS FORMING PART OF BID

This is Two- Bid System comprising of:

- A) Technical Bid**
- B) Price Bid**

1. Both the Bids shall be submitted in sealed covers separately. Tender NO. of Technical Bid and Price Bid shall be superscribed on the respective covers in order to clearly identify between the 2 Bids. The two separately marked Bids enclosed in single sealed cover with the respective Tender NO. mentioned thereon, complete in all respect, addressed to THE DEPUTY GENERAL MANAGER (PURCHASE) HLL LIFECARE LTD., KANAGALA – 591 225, DIST- BELGAUM, KARNATAKA STATE, INDIA should reach us on or before the due date and time mentioned in the NIT. The Purchaser shall not be responsible for postal delay if any, in the delivery of the Bidding Document or non-receipt of the same.

2. EMD of ₹ 25,000/- should be remitted by DD only, drawn in favor of HLL Lifecare Limited, payable at State Bank of India, Nipani and shall be enclosed along with the Technical Bid. **However, SSI Units / Bidders** who are currently registered and also will continue to remain registered during the Tender Validity Period with **DIC or NSIC** for the specific goods as per the NIT Specification shall be eligible for exemption from payment of Tender Cost and EMD **on submission of Valid Copy of their Registration Certificate duly renewed along with the Technical Bid.**

3. Bids received after the deadline for the submission will not be considered.

4. Un-sealed Tenders received are liable to be rejected and this will be on sole risk of Bidders.

5. The Bidder is expected to examine all Specifications, Instructions, Forms, Terms & Conditions given in the Tender Document.

6. The Tender should be complete in all respects & incomplete Tenders are liable to be rejected.

7. Description and Specification should be the same as given in the Enquiry / Tender / NIT.

8. Any change in the Description or Specification shall be at the specific instruction of HLL. In case an offer of a brand is being made, the offer should be as per the Description given in the NIT / Tender and the brand name to be given in bracket. A Separate Sheet should be attached.

9. HLL Lifecare Limited reserves the right to split up the order for the entire quantity on more than a supplier and also reserves the right to accept or reject the offer without assigning any reason.

10. Addendums / Amendments issued if any to this NIT / Tender Documents shall be part of this NIT / Tender Documents and shall be informed to the Bidders who have purchased the NIT / Tender Documents or shall be published in our website. The Bidders are advised to check our website specified above to download the Addendums / Amendments issued, if any.

11. THERE WILL NOT BE ANY POST TENDER NEGOTIATION EXCEPT WITH 1st LOWEST.

GENERAL CONDITIONS FORMING PART OF BID

12. Security Deposit of 5% of the total order value should be deposited.

13. The Parties have to abide by Delivery Schedule strictly. HLL Lifecare Limited reserves the right to impose Penalty @ 0.5% value of the delayed material per week of delay subject to a maximum of 7.5% of the value of the supply defaulted if material is delayed beyond the due date and accepted by the Company.

14. Acceptance of the delayed supplies subject to Penalty Clause is solely at the discretion of the Company (HLL Lifecare Limited).

15. Rejected material should be taken back and replaced with supplier's cost within 7 (seven) days.

16. Dispatch Documents like Delivery Note, Packing List and Invoice should contain the following details:

- a) Purchase Order NO. / Supply Order NO. & Date.
- b) Description of Items as contained in the Purchase Order.
- c) Quantity Dispatched
- d) Total NO. of Packages.

17. The following information shall be stenciled or labeled on the exterior of the packing in bold letters, clearly visible, at least 50 mm high with waterproof ink.

- A. Instruction for Storage and Handling.
- B. Name and Address of Manufacturer.
- C. Companies Address in full.
- D. All Packages should be numbered and it should appear on top of the packages serially.

18. The Jurisdiction of any disputes, suits and proceedings arising out of this NIT / Tender shall be only in the Courts of Hukkeri Taluk, Belgaum Dist. / Trivandrum.

19. Indemnity Clause

If the Supplier fails to execute the order within the time prescribed for the delivery of goods ordered or violates or infringes the existing rates as mentioned and agreed to in the Purchase Order the Supplier shall and will indemnify the Company against all losses or damages whatsoever to be incurred or sustained including the legal cost or expenses incurred by the Company by reason of non-delivery of goods at agreed quantity and rate within the time specified in the Purchase Order. The Company will initiate legal action if the Supplier fails to execute the Purchase Order as per the schedule in the Purchase Order for the actual loss suffered or 5% of the total order value whichever is higher along with costs.

20. HLL Lifecare Limited shall fix the criteria for responsiveness of a Bid based on critical factors in the Tender Document. Bids pronounced non-responsive by HLL shall be summarily rejected.

21. Suppression of facts will disqualify the Bidder.

GENERAL CONDITIONS FORMING PART OF BID

22. Payment Terms: Our intention is to make payment by cheque within 30 days of receipt; inspection and acceptance of the material and cheque will be forwarded to parties through Speed Post.

23. HLL Lifecare Limited reserves the right to qualify or not a Tender without assigning any reasons. The decision of HLL will be final and no correspondence will be entertained in this regard.

24. The Tender is liable to be suspended or cancelled at anytime at the discretion of the Company without assigning any reasons.

We have read and understood the above Conditions and agree to abide by the same.

**Place:
Date:**

**Signature of the Bidder
Name, Seal and Address of the Bidder**

SCHEDULE - A: PRICE BID

ITEM: SUPPLY, INSTALLATION AND COMMISSIONING OF HT PANEL WITH VCB'S FOR 11 KV – Qty: 01 NO.

SL. NO.	PARTICULARS	AMOUNT (INR)
01	BASIC PRICE <u>(including all the Components & Accessories as per Tendered Specifications)</u>	
02	PACKING CHARGES (___ %)	
03	EXCISE DUTY (___ %)	
04	SALES TAX (___ % CST / VAT)	
05	FREIGHT CHARGES	
06	INSURANCE CHARGES	
07	INSTALLATION, ERECTION & COMMISSIONING CHARGES	
08	OTHER CHARGES, IF ANY <u>(specify the name of the charges)</u>	
09	SERVICE TAX (%) – <u>inclusive @ 12.36% / applicable extra @ 12.36% on SL. NO. _____ above / Not Applicable</u>	
GRAND TOTAL INCLUSIVE OF ALL TAXES & DUTIES F.O.R. HLL KANAGALA		
Rupees in words _____		

DELIVERY PERIOD (FROM THE DATE OF ORDER): _____

TERMS AND CONDITIONS OF PRICE BID:

1. The rate should be inclusive of all for Supply, Installation & Commissioning on TURN KEY BASIS.
2. Civil Works, if any, required for Installation, Foundation laying etc., to be carried out by the party.
3. Party should take care of all Safety Measures and should obtain Work Permit from our Safety Dept. before starting the work.
4. In case of any damages caused to our (HLL Lifecare Limited) property by you/ your workmen while executing the above job, the Company (HLL Lifecare Limited) shall recover the cost of such damages from you.
5. In the event of any accident to your workmen or personnel while executing the above job in the Company's Premises (HLL Lifecare Limited), you shall pay the compensation as per the Workmen's Compensation Act and the rates framed there under.
6. Statutory Deductions, if any, applicable, like PF, ESI, Work Contract Tax and TDS etc., will be recovered from your payment.
7. There will not be any post Tender negotiation except with L1 (Lowest).
8. TIN / VAT NO. shall be furnished.
9. Service Charges, if any, on freight element shall be borne by Suppliers only.

SCHEDULE - A: PRICE BID

ITEM: SUPPLY, INSTALLATION AND COMMISSIONING OF HT PANEL WITH VCB'S FOR 11 KV – Qty:
01 NO.

10. There shall not be Corrections / Overwriting in Price Bid, if so, same are to be attested.
11. **Rate shall be quoted in the enclosed format only. Please refer SCHEDULE - A: PRICE BID.**
12. **Rates quoted shall be valid for a period of one year, from the date of your Offer.**
13. Specifications of Items are as per Notice Inviting Tender (NIT).

We have read and understood the above Conditions and agree to abide by the same.

Place:
Date:

Signature of the Bidder
Name, Seal and Address of the Bidder

Note: We are utilizing services of M/s. Professional Courier Services for incoming and outgoing Letters / Parcels on day-to-day basis.