

Amendment no.1

24th September, 2014

Sub : Amendment to the tender for the Supply, Installation, Testing and Commissioning of Automatic Three Line Square Packing Machines in pair with bowl feed for foil sealing of condoms at HLL Lifecare Limited Peroorkada Factory, Thiruvananthapuram

Ref : **IFB No :HLL/CED/SITC/3LINE PACKING/MACHINE/2014 Dtd.05-09-2014**

With reference to the above, we here by incorporate the following amendment to the tender documents as detailed below :

Amendment no.1

- (a) Last date and time of receipt of tender : 01-10-2014,15.00Hrs
- (b) Date and time of opening tender : 01-10-2014, 15.30Hrs
- (c) User requirements page no.14,15,16,17,18 & 19

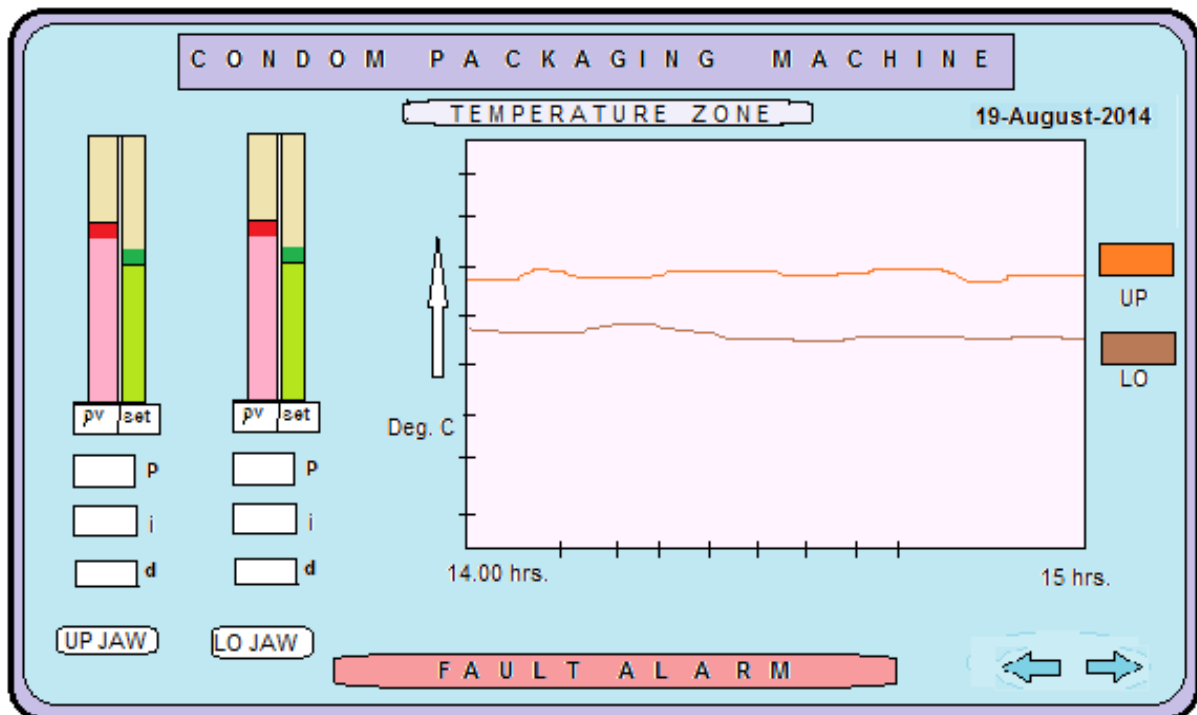
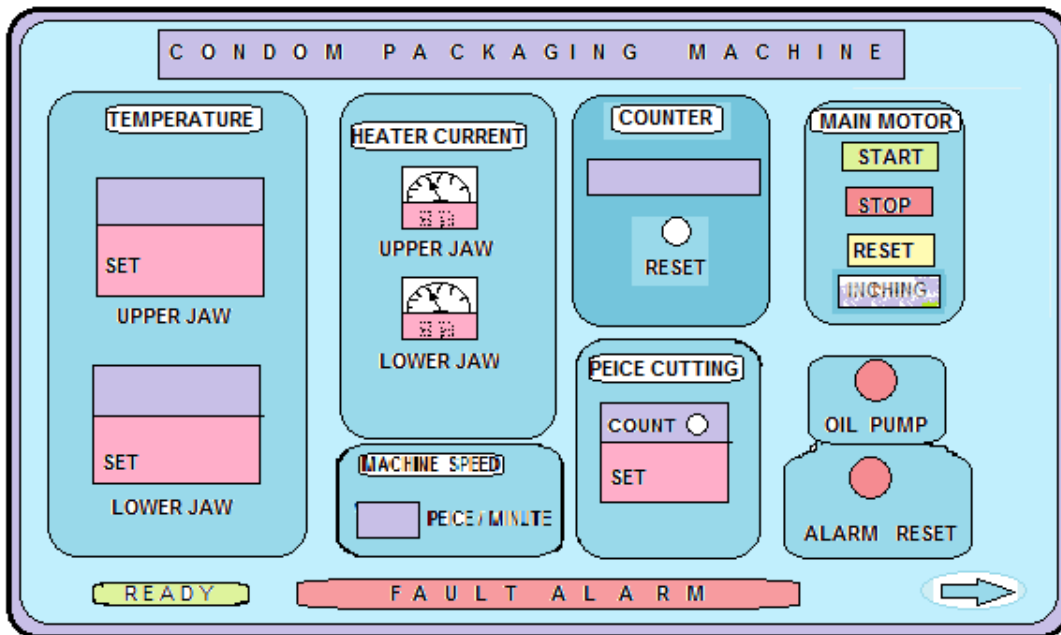
Existing

- 14.1.6 Operational acceptance: operational acceptance shall occur in respect of the system when the performance test has been successfully completed and the functional performances are met.
- 14.1.7 Period of warranty shall be 12 months from the date of installation and commissioning as certified jointly by the supplier and the purchaser.
- 14.1.8 The bidder shall attend the pre-bid conference arranged by HLL before submitting the offer.
- 14.1.9 Three copies of instruction/operational manual (especially for brought out items) and maintenance manual should be supplied along with the machine.
- 14.1.10 A list of spare parts should be provided. a minimum set of spare parts should be provided for each machine.
- 14.1.11 Brought out items such as electrical/electronic items, electric heat banks etc should be as per relevant indian standards approved certifications.

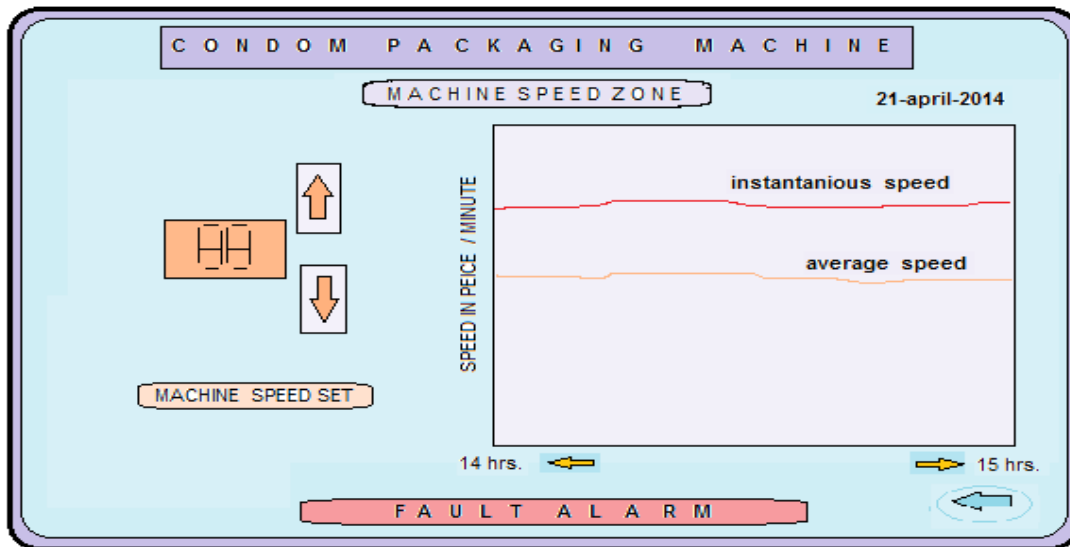
15.0 Level of automation

15.1 The equipment should operate with minimum operator involvement. The equipment control panel must be provided with a Human machine interface based on English language with appropriate number (a minimum of 20 programs) of recipe of all process parameters

HOME SCREEN



SCREEN -2



SI No	Item	Specifications	Qty	Make	Description
1	PLC Programmable(with Digital modules) with Touch Screen	32 Bit Input/Output	1	SIEMENS/ ALENBAR DLEY/ABB	Fully PLC Based system with all operations through PLC Programme and it should be expandable type with Compatable to SCADA system as per IEC61131-3 .
2	MAIN MOTOR (GEARED TYPE) DIRECT DRIVE.	P=400 WATTS, 0.4 KW, 1/2 HP, 220V, 2.5/1.4A GEAR RATIO=1:20, RPM=1700	1	NORD/ROSSI/BONFIGOLI	1. GEAR RATIO :- 20 : 1 2. SUPPLY VOLTAGE (VAC/HZ) :- 1 X 230/ 50 3. SPEED :- 1700 rpm 4. TORQUE :- 5.3 Ncm 8. THIS MOTOR SHOULD BE THERMALLY PROTECTED. 9.COOLING TYPE : F1 10.ENCLOSURE : IP 55 It should be as per IS 12615
3	TRANSFORMERS	250 K , 240 V AC, 50 Hz	3		It should as per IS 2026
3	COOLING FAN BLOWER	V- 220V,FREQUENCY-50Hz, P=28 W, FLOW	3		It should be as per IS 4894 .

		RATE=1.7m ³ /min, X=19.5mm.			
4	UP MOULD TEMPERATUR E CONTROLLER/ UNDER MOULD CONTROLLER	RANGE-50 ^o - 1300 ^o C , NUMBER OF PORTS- 8NOS FREE PORT- 2NOS, CONNECTED LINES-6NOS	1	AUTONIC S/OMRON	
5	HEATER CATRIDDDGE	600W/700W, HIGH DENSITY CATERIDGE HEATER IN STAINLESS STEEL HOUSING LENGTH 230mm- Ø18.75mm 2 LEAD WIRES (EACH 300mm LONG, Fibre Glass Insulated 1.5sq mm, 240V,700W) with suitable heat resistant washers ment for continous Operation	2		Heater & washer should be made for continous operation ,Heater Body should be made of inconel with proper body insulation as per IS
6	SOLINOID VALVE FOR PUMP WITH PU TUBE	a) Solinoid Coil made-ypc, SGI- A2, AC-220V, 3.4VA, I=16mA b) 5PORTS IN VALVE (TWO SIDE CONNECTEION) one touch connectors-3, inlet connection-1 Inlet-8MM (One touch) outlet connections-2 Outlet -6MM (One touch) One	1	FESTO/JA NATICS	

		connection is air regulator type.			
7	AUTO CUTTER SOLINOID VALVE (2NOS), CONNECTED TO COMMON WITH PU TUBE		3	FESTO/JA NATICS	
8	PNEUMATIC DISPENSER	PRESSURE-3BAR, CAPACITY-200-100ml/SHOT, STROKE RATE 0-60 STROKE/min, connections/point-6NOS	1	FESTO/JA NATICS	
9	COUNTER	100-240V AC, 4.5 VA, FREQUENCY-50Hz, TERMINAL-6, USED TERMINALS-4 (USED PORT-1,4,5,6)	1	AUTOMIC S/OMRON	
10	FUSE	5A-2NOS, 2A-2NOS	4	SCHNEIDER/L&T/HAVELS	It should be as per IS 13703 .
11	PROXIMITY SWITCH (SENSOR)	FREQUENCY RESPONSE MAX= 500HZ, SENSING RANGE MAX= 4mm, SENSOR INPUT=INDUCTIVE, SUPPLY OF VOLTAGE DC= 30 V, SUPPLY OF VOLTAGE DC MIN= 10V	3	AUTOMIC S/OMRON	It should be as per IS 6875 .

12	LIMIT SWITCH	16A, 1/2 HP, 125OR, 250 VAC, 0.6A, 125VDC, 0.3A, 250VDC, 16(3)A, 250V	3	SCHNEIDER/L&T/HAVELS	It should be as per IS 6875 .
13	INVERTOR	FR-S520E-0.1K TO 3.7K(-C)	1	MITSUBISHI ELECTRIC /SIEMENS	
14	DIGITAL PRESSURE SWITCH	DUAL DISPLAY TO CHECK (CURRENT VALUE AND SET VALUE), 3 COLOUR DISPLAY , COPY FUNCTION OF SETTING DETAILS, 3-MODE SETTINGS, SIZE 30X25.5 MM	1	FESTO/JANATICS	It should be as per IS 6875 .
15	DIGITAL TEMPERATURE CONTROLLER INDICATOR(PID).	PID CONTROLLER , MULTI RANGE-RTD , THERMOCOUPLE , OUTPUT SSR 100/240 V AC	1	AUTONICS/OMRON	It should be as per IS 6875 .
16	UPMOULD/ UNDER MOULD HEATER SENSOR	FLAT SENSOR(BUTTON TYPE)	2	AUTONICS/OMRON	It should be as per IS 6875 .
17	MCB 20 A	450 V , 50 Hz	1	SCHNEIDER/L&T/HAVELS	It should be as per IS 2516
18	PROXIMITY SWITCH (SENSOR) 3 PIECED FOR PUMP (SILICON OIL)	10-30V DC , 8 MM PNP , MAX LOAD-300 MA	3	AUTONICS/OMRON	

19	FILTER REGULATOR WITH DIAL GAUGE (2NOS) WITH PU TUBE	MAX PRESSURE 10 BAR, SET PRESSURE 0.5 TO 10 BAR		FESTO/JA NATICS	2 CONNECTIONS 1- IN AND 1- OUT, 8 MM DIA TUBE CONNECTION
20	SLIP RING(4NOS)		4		
21	ROTAY SWITCHES (ON/OFF)	440 V AC ,15A	10	SCHNEID ER/L&T/H AVELS	It should be as per IS 6875
22	PUSH SWITCHES (ON/OFF)	440 V AC ,5A	2	SCHNEID ER/L&T/H AVELS	It should be as per IS 6875
23	EMERGENCY STOP	230 V AC ,5A	1	SCHNEID ER/L&T/H AVELS	It should be as per IS 6875
24	POWER SUPPLY SOURCE 24 V DC	24 V DC	1	SCHNEID ER/L&T/H AVELS	It should be as per IS 6875
25	VFD DRIVE FOR MAIN MOTOR	0.4 KW , 450 V AC , 50 HZ	1	SIEMENS/ ALENBAR DLEY/ABB	
26	MCB 10 A	230V AC ,50 Hz	3	SCHNEID ER/L&T/H AVELS	It should be as per IS 2517
27	3 C X 4 Sq mm Heat Resistant Cable	PVC Sheath(Fibre glass type with insulation)	50 mtrs	FINOLEX/ HAVELS/G LOSTER	It should be as per IS 649
28	4 C X 4 Sq mm Heat Resistant Cable	PVC Sheath(Fibre glass type with insulation)	50 mtrs	FINOLEX/ HAVELS/G LOSTER	It should be as per IS 649
29	5 C X 2.5 Sq mm Cable	PVC Sheath	50 mtrs	FINOLEX/ HAVELS/G LOSTER	It should be as per IS 649
30	3 C X 2.5 Sq mm Cable	PVC Sheath	50 mtrs	FINOLEX/ HAVELS/G LOSTER	It should be as per IS 649

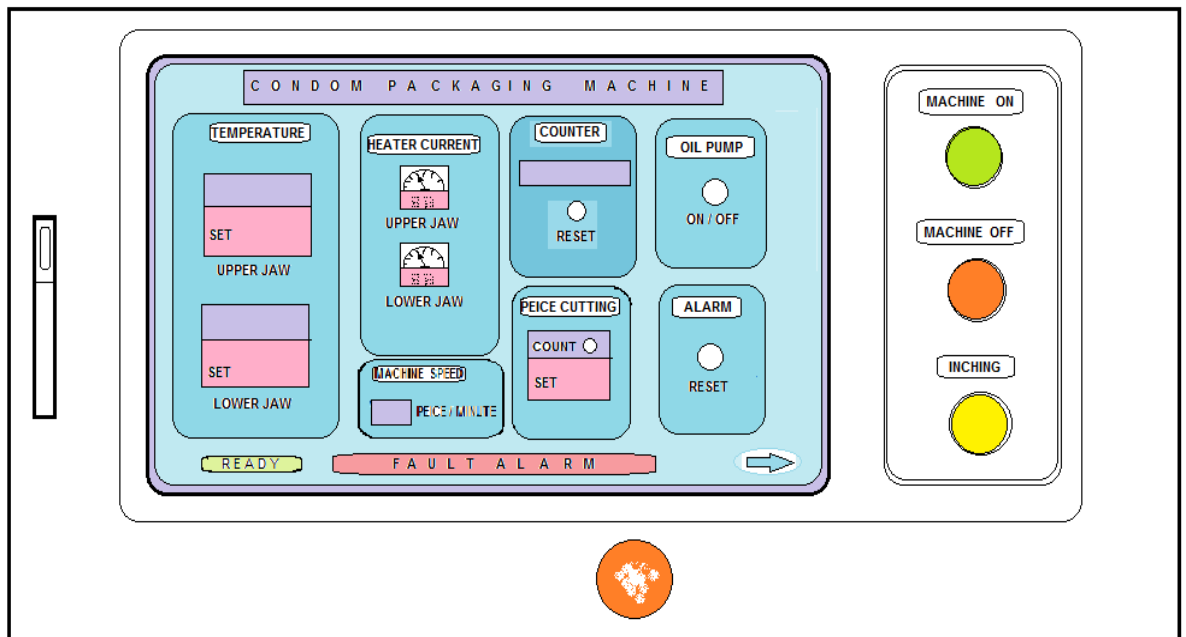
31	Sensor Cable	Fibre Glass Type	50 mtrs	FINOLEX/ HAVELS/G LOSTER
----	--------------	------------------	---------	--------------------------------

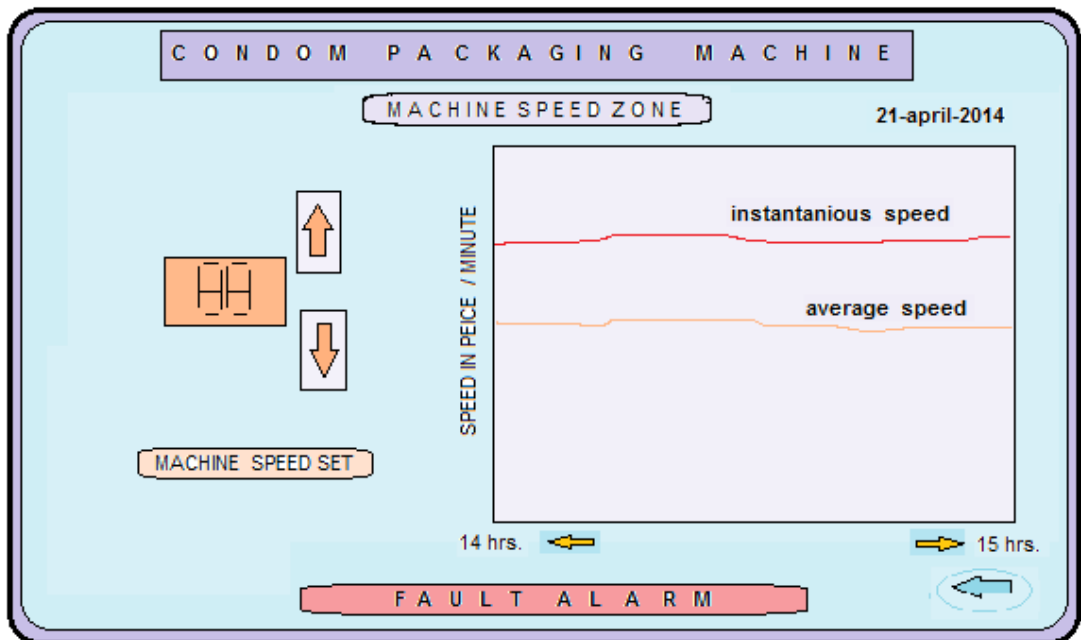
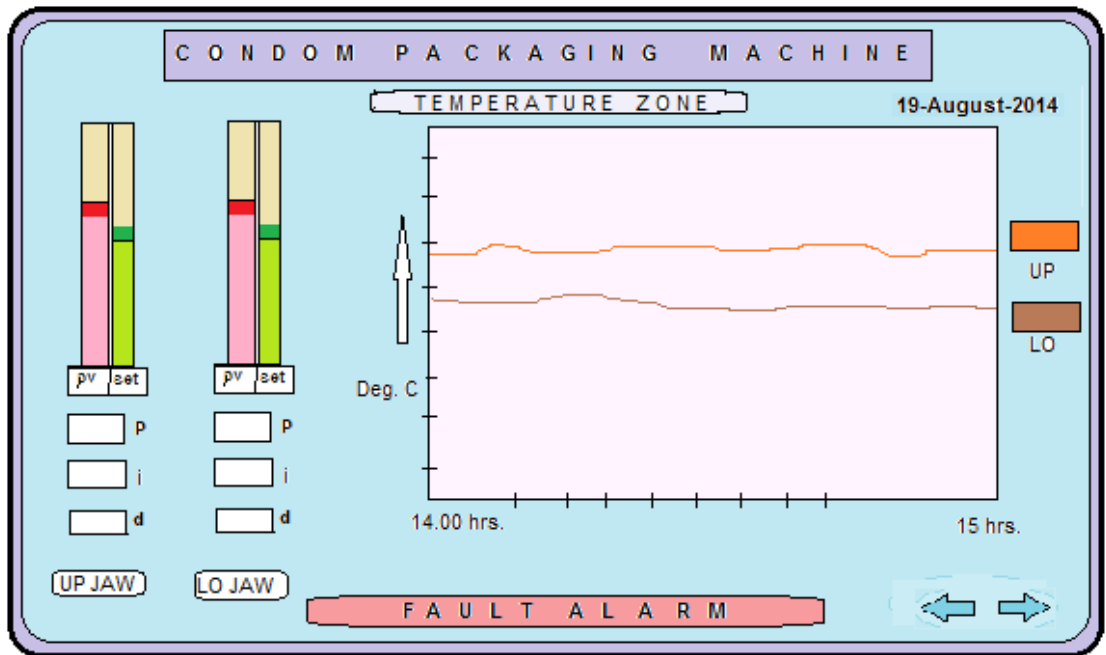
READ AS

- 14.1.12 Operational acceptance: operational acceptance shall occur in respect of the system when the performance test has been successfully completed and the functional performances are met.
- 14.1.13 Period of warranty shall be 12 months from the date of installation and commissioning as certified jointly by the supplier and the purchaser.
- 14.1.14 The bidder shall attend the pre-bid conference arranged by HLL before submitting the offer.
- 14.1.15 Three copies of instruction/operational manual (especially for brought out items) and maintenance manual should be supplied along with the machine.
- 14.1.16 A list of spare parts should be provided. a minimum set of spare parts should be provided for each machine.
- 14.1.17 Brought out items such as electrical/electronic items, electric heat banks etc should be as per relevant indian standards approved certifications.

15.0 Level of automation

15.1 The equipment should operate with minimum operator involvement. The equipment control panel must be provided with a Human machine interface based on English language with appropriate number (a minimum of 20 programs) of recipe of all process parameters





Sample screens are shown above. Further more development may be incorporated like " pass word protection, average speed for a particular period , etc...

This can be further developed / modified based on our perception and the capacity of the devices.

(PLC & HMI)

The PLC / HMI should have the capability to configure with existing Allen Bradley make VFD. (Powerflex-40/4M)

SI No	Item	Specifications	Qty	Make	Description
1	PLC Programmable(with Digital modules) with Touch Screen	32 Bit Input/Output	1	SIEMENS/ ALENBAR DLEY/ABB	Fully PLC Based system with all operations through PLC Programme and it should be expandable type with Compatable to SCADA system as per IEC61131-3 .
2	MAIN MOTOR (GEARED TYPE) DIRECT DRIVE.	P=400 WATTS, 0.4 KW, 1/2 HP, 415V, AC,50HZ GEAR RATIO=1:20, RPM=1700	1	NORD/ROSSI/BONFIGLIOLI/FUJI	1. GEAR RATIO :- 20 : 1 2. SUPPLY VOLTAGE (VAC/HZ) :- 1 X 230/ 50 3. SPEED :- 1700 rpm 4. TORQUE :- 5.3 Ncm 8. THIS MOTOR SHOULD BE THERMALLY PROTECTED. 9.COOLING TYPE : F1 10.ENCLOSURE : IP 55 It should be as per IS 12615
3	TRANSFORMERS	250 K , 240 V AC, 50 Hz	3		It should as per IS 2026
3	COOLING FAN BLOWER	V- 220V,FREQUENCY-50Hz, P=28 W, FLOW RATE=1.7m ³ /min, X=19.5mm.	3		It should be as per IS 4894 .
4	UP MOULD TEMPERATURE CONTROLLER/ UNDER MOULD CONTROLLER	RANGE-50 ^o -1300 ^o C , NUMBER OF PORTS- 8NOS FREE PORT-2NOS, CONNECTED LINES-6NOS	1	AUTONICS/OMRON	

5	HEATER CATRIDDDGE	600W/700W, HIGH DENSITY CATERIDGE HEATER IN STAINLESS STEEL HOUSING LENGTH 230mm- Ø18.75mm 2 LEAD WIRES (EACH 300mm LONG, Fibre Glass Insulated 1.5sq mm, 240V,700W) with suitable heat resistant washers ment for continous Operation	2		Heater & washer should be made for continous operation ,Heater Body should be made of inconel with proper body insulation as per IS
6	SOLINOID VALVE FOR PUMP WITH PU TUBE	a) Solinoid Coil made-ypc, SGI- A2, AC-220V, 3.4VA, I=16mA b) 5PORTS IN VALVE (TWO SIDE CONNECTEION) one touch connectors-3, inlet connection-1 Inlet-8MM (One touch) outlet connections-2 Outlet -6MM (One touch) One connection is air regulator type.	1	FESTO/JA NATICS	
7	AUTO CUTTER SOLINOID VALVE (2NOS), CONNECTED TO COMMON WITH PU TUBE		3	FESTO/JA NATICS	

8	PNEUMATIC DISPENSER	PRESSURE-3BAR, CAPACITY-200-100ml/SHOT, STROKE RATE 0-60 STROKE/min, connections/ point-6NOS	1	FESTO/JANATICS	
9	COUNTER	100-240V AC, 4.5 VA, FREQUENCY-50Hz, TERMINAL-6, USED TERMINALS-4 (USED PORT-1,4,5,6)	1	AUTONIC S/OMRON	
10	FUSE	5A-2NOS, 2A-2NOS	4	SCHNEIDER/L&T/HAVELS	It should be as per IS 13703.
11	PROXIMITY SWITCH (SENSOR)	FREQUENCY RESPONSE MAX= 500HZ, SENSING RANGE MAX= 4mm, SENSOR INPUT=INDUCTIVE, SUPPLY OF VOLTAGE DC= 30 V, SUPPLY OF VOLTAGE DC MIN= 10V	3	AUTONIC S/OMRON	It should be as per IS 6875.
12	LIMIT SWITCH	16A, 1/2 HP, 125VAC, 250 VAC, 0.6A, 125VDC, 0.3A, 250VDC, 16(3)A, 250V	3	SCHNEIDER/L&T/HAVELS	It should be as per IS 6875.
13	DIGITAL PRESSURE SWITCH	DUAL DISPLAY TO CHECK (CURRENT VALUE AND SET VALUE), 3 COLOUR DISPLAY , COPY	1	FESTO/JANATICS	It should be as per IS 6875.

		FUNCTION OF SETTING DETAILS, 3-MODE SETTINGS, SIZE 30X25.5 MM			
14	DIGITAL TEMPERATURE CONTROLLER INDICATOR(PID).	PID CONTROLLER , MULTI RANGE-RTD , THERMO COUPLE , OUTPUT SSR 100/240 V AC	1	AUTONIC S/OMRON	It should be as per IS 6875 .
15	UPMOULD/ UNDER MOULD HEATER SENSOR	FLAT SENSOR(BUTTON TYPE)	2	AUTONIC S/OMRON	It should be as per IS 6875 .
16	MCB 20 A	450 V , 50 Hz	1	SCHNEIDER/L&T/H AVELS	It should be as per IS 2516
17	PROXIMITY SWITCH (SENSOR) 3 PIECED FOR PUMP (SILICON OIL)	10-30V DC , 8 MM PNP , MAX LOAD-300 MA	3	AUTONIC S/OMRON	
18	FILTER REGULATOR WITH DIAL GAUGE (2NOS) WITH PU TUBE	MAX PRESSURE 10 BAR, SET PRESSURE 0.5 TO 10 BAR		FESTO/JANATICS	2 CONNECTIONS 1- IN AND 1- OUT, 8 MM DIA TUBE CONNECTION
19	SLIP RING(4NOS)		4		
20	ROTAY SWITCHES (ON/OFF)	440 V AC ,15A	10	SCHNEIDER/L&T/H AVELS	It should be as per IS 6875
21	PUSH SWITCHES (ON/OFF)	440 V AC ,5A	2	SCHNEIDER/L&T/H AVELS	It should be as per IS 6875

22	EMERGENCY STOP	230 V AC ,5A	1	SCHNEIDER/L&T/H AVELS	It should be as per IS 6875
23	POWER SUPPLY SOURCE 24 V DC	24 V DC	1	SCHNEIDER/L&T/H AVELS	It should be as per IS 6875
24	VFD DRIVE FOR MAIN MOTOR	0.75 KW , 415V 3PHASE AC , 50 HZ	1	SIEMENS/ ALENBAR DLEY/ABB /FUJI	
25	MCB 10 A	230V AC ,50 Hz	3	SCHNEIDER/L&T/H AVELS	It should be as per IS 2517
26	3 C X 4 Sq mm Heat Resistant Cable	PVC Sheath(Fibre glass type with insulation)	50 mtrs	FINOLEX/ HAVELS/G LOSTER	It should be as per IS 649
27	4 C X 4 Sq mm Heat Resistant Cable	PVC Sheath(Fibre glass type with insulation)	50 mtrs	FINOLEX/ HAVELS/G LOSTER	It should be as per IS 649
28	5 C X 2.5 Sq mm Cable	PVC Sheath	50 mtrs	FINOLEX/ HAVELS/G LOSTER	It should be as per IS 649
29	3 C X 2.5 Sq mm Cable	PVC Sheath	50 mtrs	FINOLEX/ HAVELS/G LOSTER	It should be as per IS 649
30	Sensor Cable	Fibre Glass Type	50 mtrs	FINOLEX/ HAVELS/G LOSTER	

ASSOCIATE VICE PRESIDENT