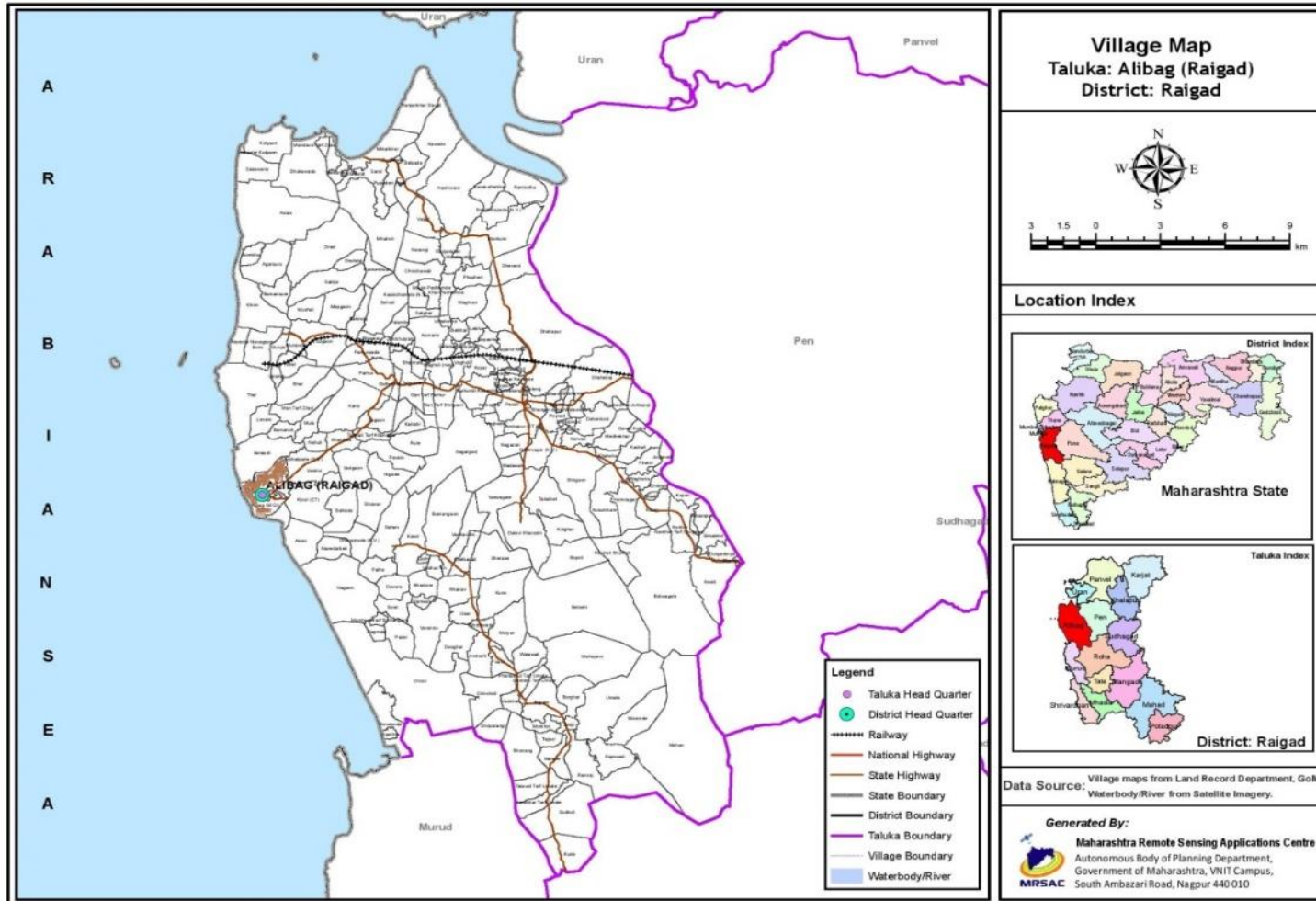
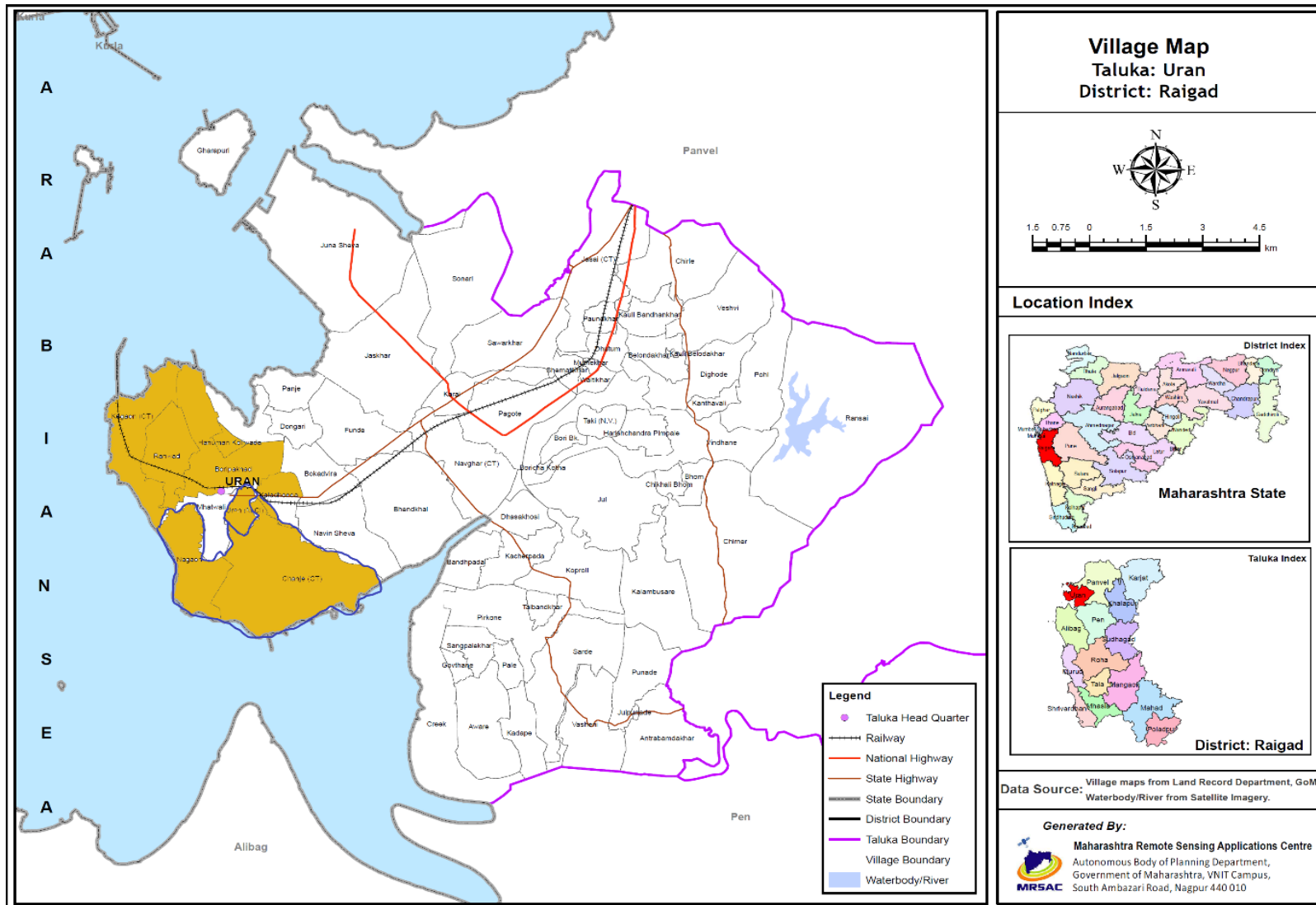


LOCATION OF THE PROJECT





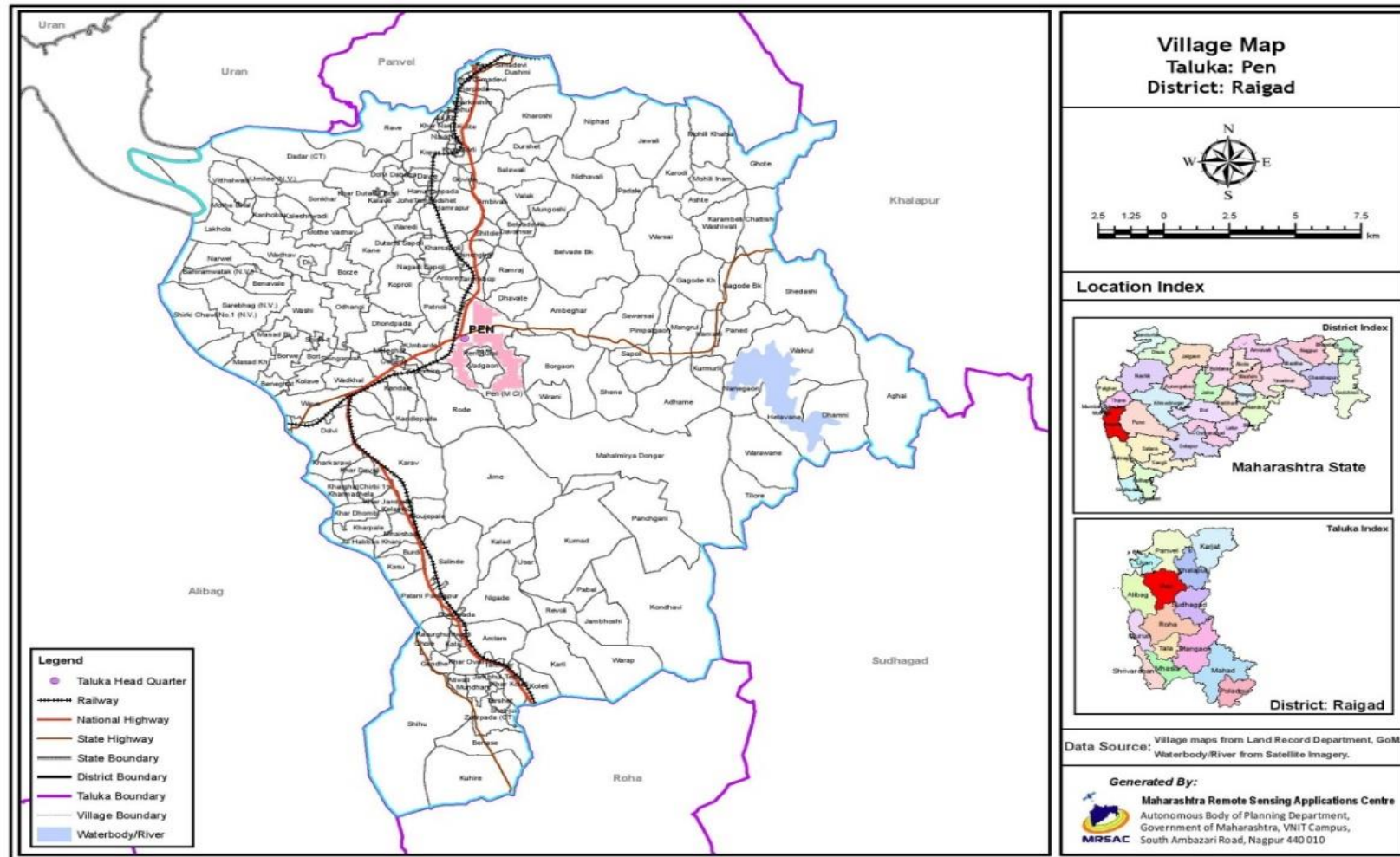
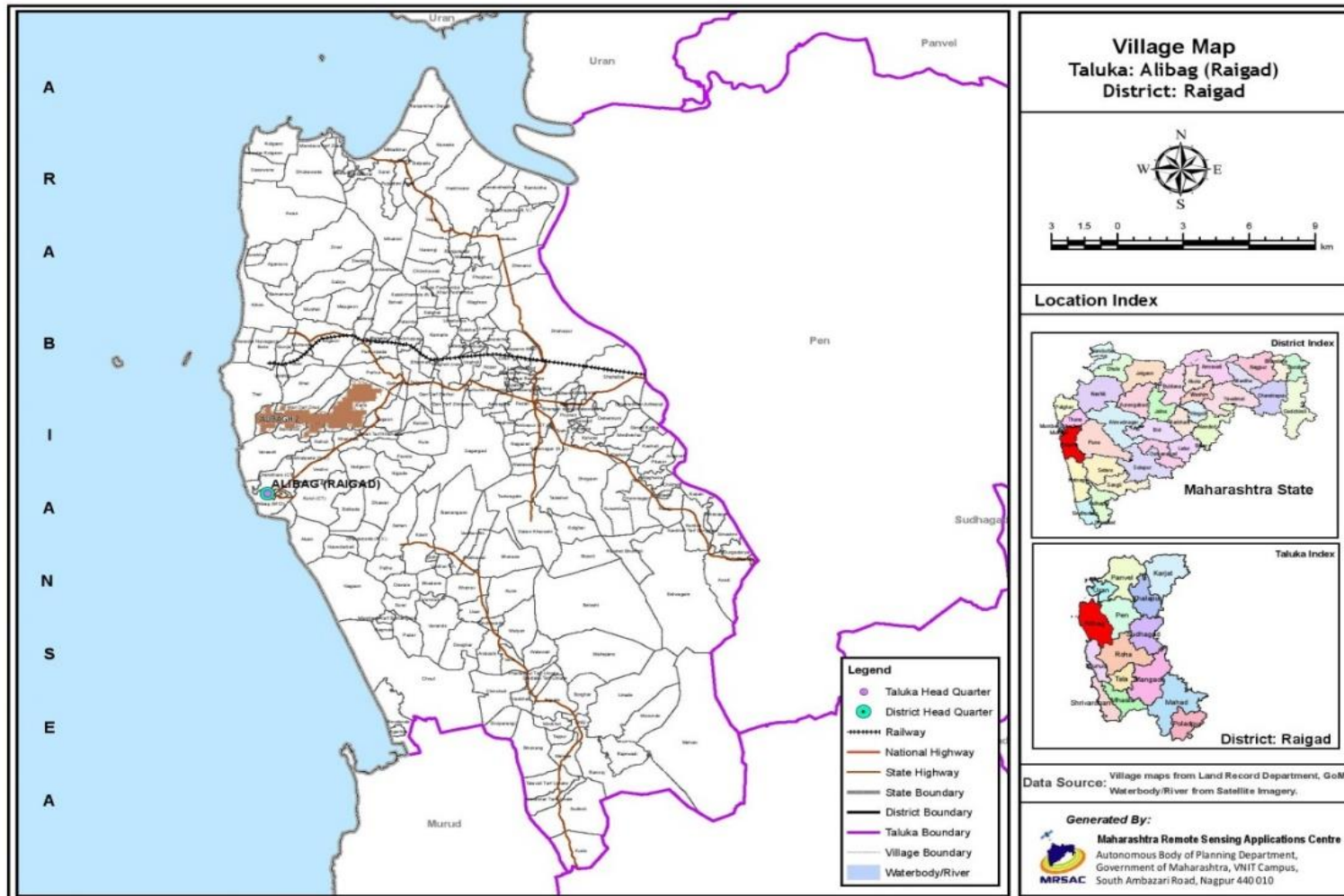


Figure 1: Location of the Project



ROUTEMAP/SINGLELINEDRAWINGS

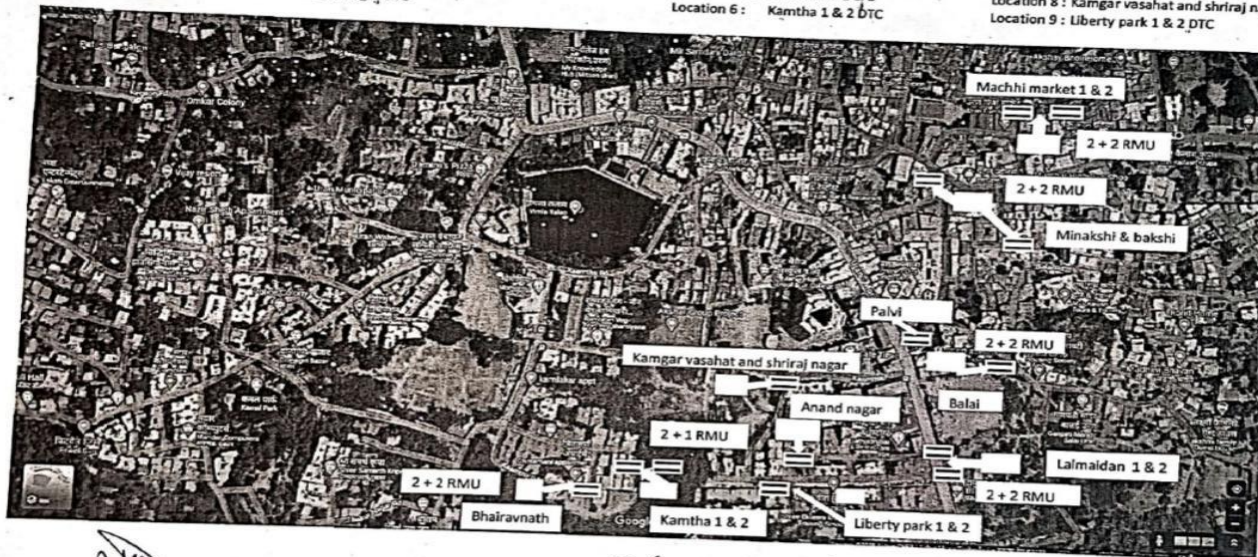
7 to 15

Location for Activity No. 5502 (Conversion of 22 KV O/H Line by 3C, 22KV 95 sqmm XLPE U/G HT Cable 1 & No. New W (RMV 2 IS0 + 2 BTK) & No. W 12 (RMV 2 IS0 + 1 BTK)

Location 1: Machhi market 1 & 2
Location 3: Balai DTC
Location 5: Anand nagar DTC


Location 2: Minakshi & bakshi
Location 04: Lalmaidan 1 & 2
Location 6: Kamtha 1 & 2 DTC


Location 7: Bhairavnath DTC
Location 8: Kamgar vasahat and shiraj nagar DTC
Location 9: Liberty park 1 & 2 DTC



Scanned with CamScanner


Assistant Engineer
MSEDCL Uran city Section

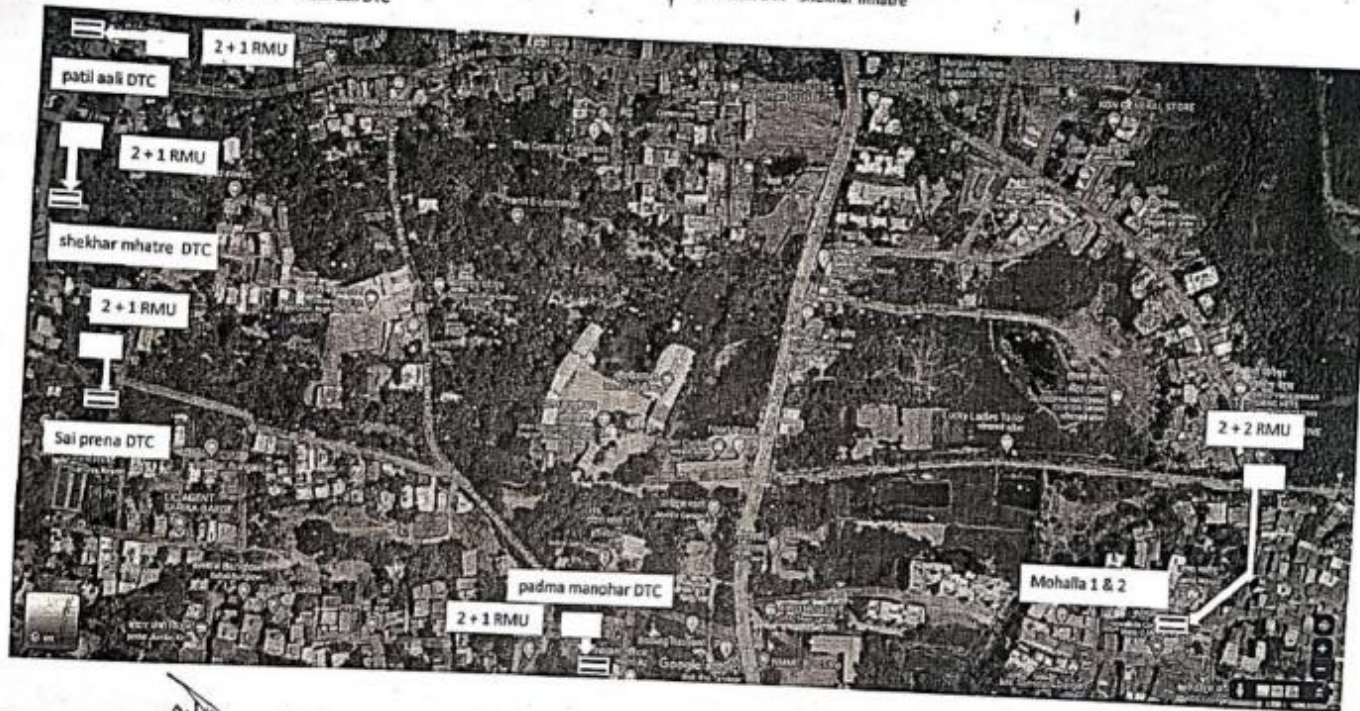

Add. Executive Engineer
O & M Subdivision, Uran
M.S.E.D. Co Ltd. Uran


Executive Engineer
M.S. Elect. Distr. Co. Ltd.
Panvel Urban Division

2,3,4,5,6

Location for Activity No. 5507. (Conversion of 22 KV O/H Line by 3C,22KV, 95 sqmm XLPE U/G HT Cable) & No. New 11 (RMV 2 Iso + 2Bxk) & New 12 (RMV 2 Iso + 1Bxk)

- Location 1: Mohalla 1 & 2 DTC
- Location 2: padma manohar DTC
- Location 3: Sai prena DTC
- Location 4: shekhar mhatre
- Location 5: Patil aali DTC



Scanned with CamScanner

[Signature]
Assistant Engineer
MSEDCL, Uran city Section

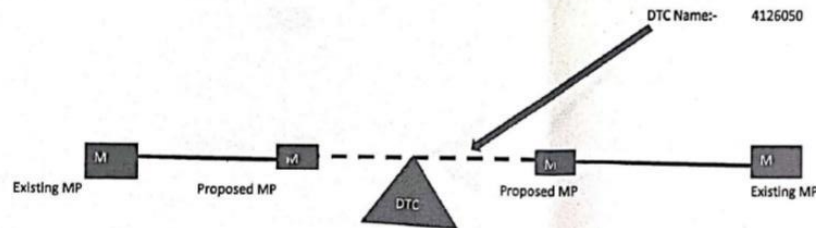
[Signature]
Add. Executive Engineer
O & M Subdivision, Uran
M.S.E.L. Co Ltd. Uran

[Signature]
Executive Engineer
M.S. Elect. Distr. Co. Ltd.
Panvel Urban Division





50

67 **SLD with Geo-co-ordinate of Locations under NCRMP DPR**
 Locations for Activity No. 5510,5512 &2003 (conversion of LT O.H. line by 3.5 C, 300 Sqmm , 185sqmm XLPE U.G. Cable & Mini Pilleres)


Subdivision Name:- Uran
 Section Name:- Karanja
 DTC Name :- 4126050
 Location Name:- DENA BANK



Index

-  Existing DTC
-  Proposed Mini Pillar 2 NOS
-  Proposed 3.5 C, 300 Sqmm XLPE U.G. Cable 0.1 KM
-  Proposed 3.5 C, 185 Sqmm XLPE U.G. Cable 0.1 KM


 Assistant Engineer
 M.S.E.D.C.L. LTD.
 KARANJA Section


 Executive Engineer
 M.S. Elect. Distr. Co. Ltd.
 Panvel Urban Division
 Add. Executive Engineer
 M.S. Elec. Dist. Co.Ltd.
 Sub. Division Uran.

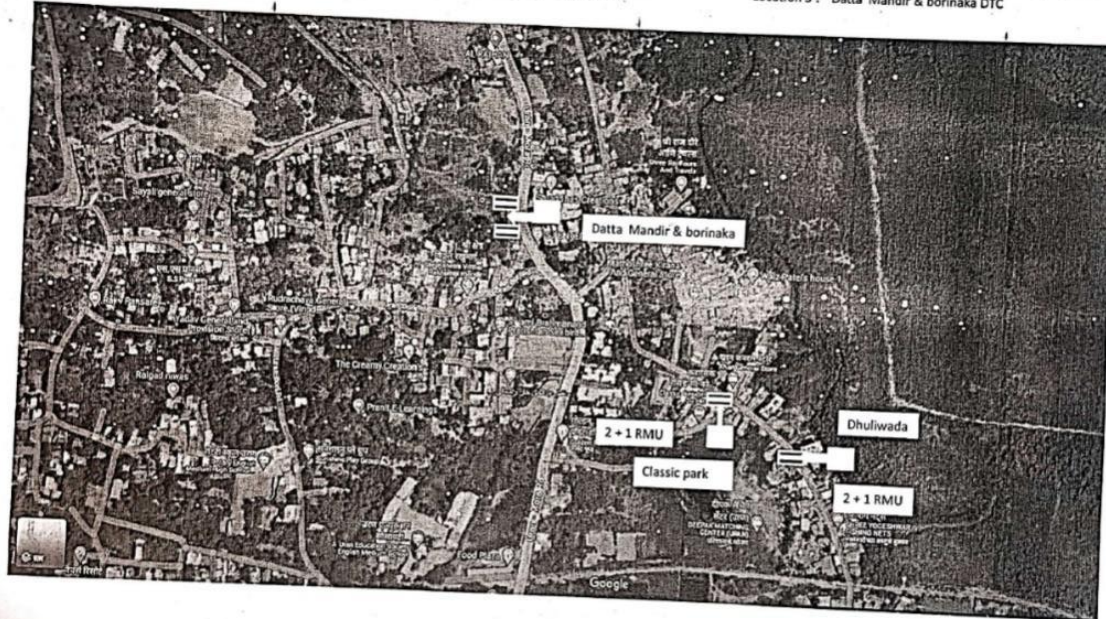
16/7/13

Location for Activity No. 5502 (Conversion of 22 KV O/H Line by 3C,22KV 95 sqmm XLPE U/G HT Cable) & NO. NEW 11 (RMV 2 ISO+2 BTK) & NEW 12 (RMV 2 ISO+1 BTK)

Location 1: Dhuliwada


Location 2: Classic park

Location 3: Datta Mandir & borinaka DTC



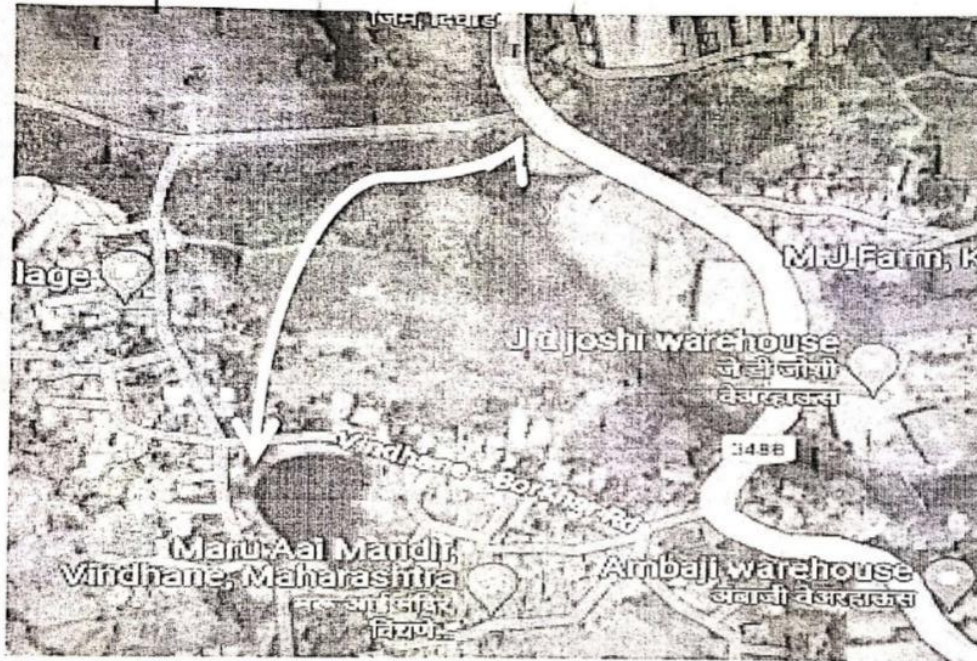

Assistant Engineer
MSEDCL Uran city Section


Add. Executive Engineer
O & M Subdivision, Uran
M.S.E.D.Co Ltd. Uran



Executive Engineer
M.S. Elect. Distr. Co. Ltd.
Panvel Urban Division

Location for Activity No. 5504 (Conversion of 2KV O.H. line by 3C 95 sqmm XLPE U.G. Cable)

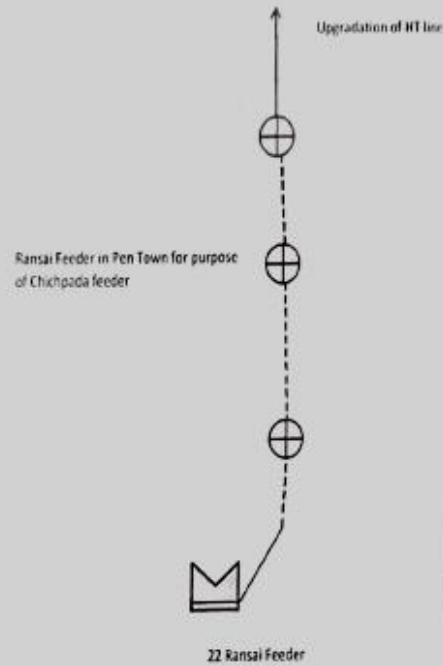
Proposed Location: Dighoda G.O.D.-Vindhane Rice Mill




Assistant Engineer
MSEDCL, Jasai Section


Add. Executive Engineer
O & M Subdivision, Uran
M.S.E.D. Co Ltd. Uran


Executive Engineer
M.S. Elect. Distr. Co. Ltd.
Panvel Urban Division




Sr.No	Symbol	Description
2	—	Existing HT Line
3	- - - -	Proposed HT UG 300 sqmm Cable
4	⊕	new RMU for Faults
5	↔	Proposed new AB Switch

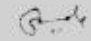
Erection of New Indoor Ring Main Unit (SF-6) (3 Isolators + 2 Breaker) 22 KV

Location	Lat	Log
UGP Unit	18 734187	73 091061
Construction	18 731035	73 091665
Proposed	18 731595	73 091481

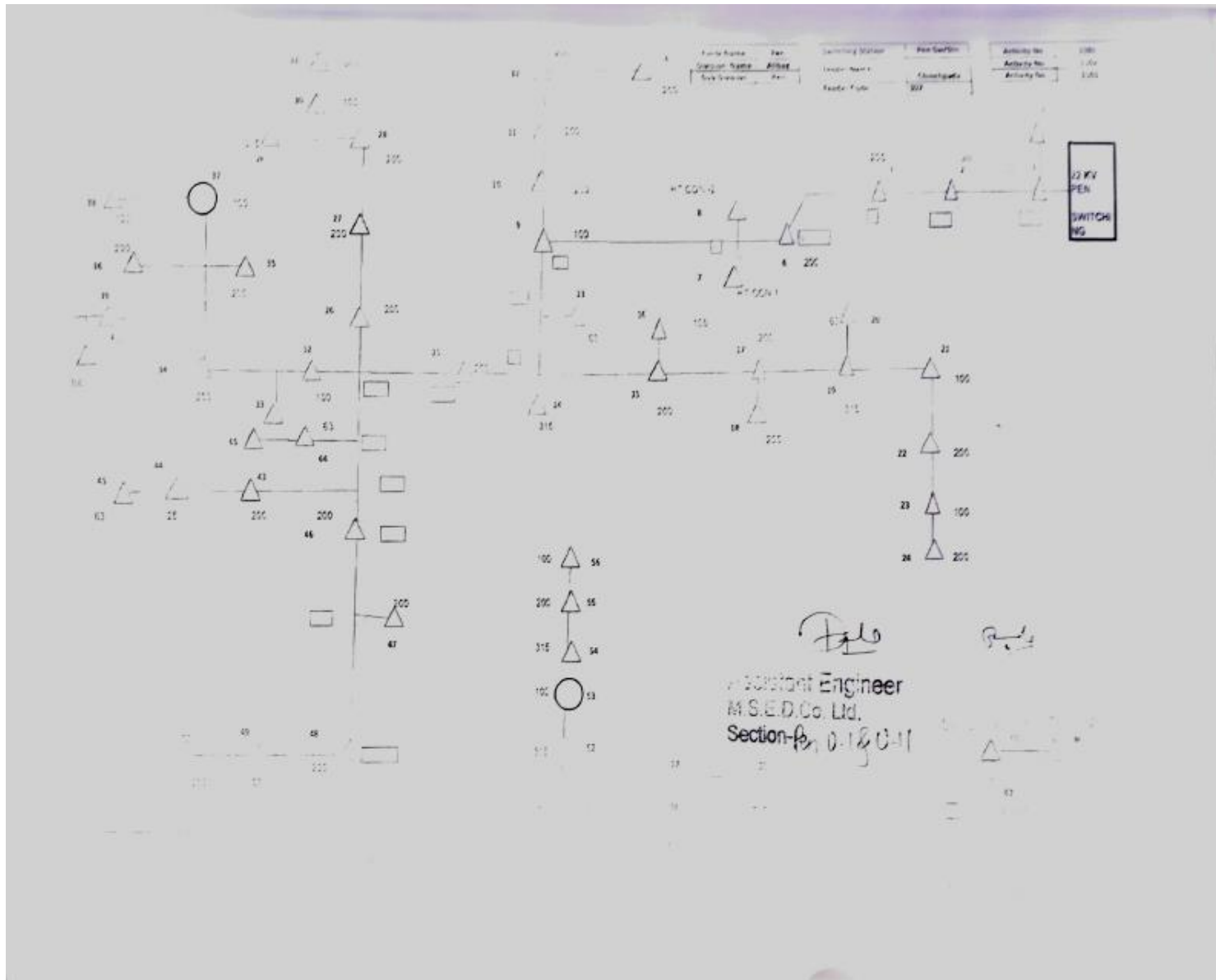
22 KV 3C 300 Sqmm ALFE under ground Cable

	From		To	
	Lat	Log	Lat	Log
	18 731035	73 091665	18 731595	73 091481

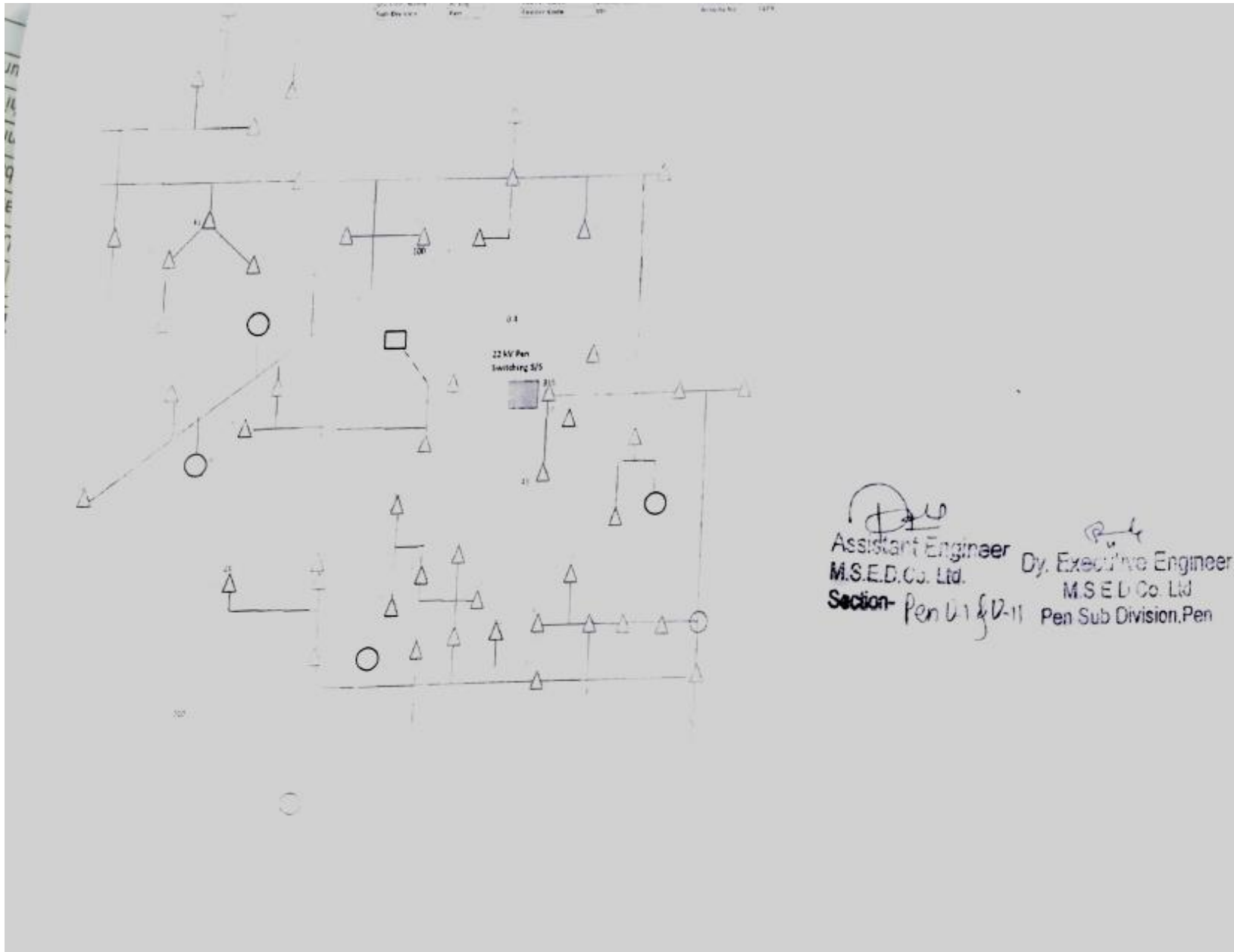

 Assistant Engineer
 M.S.E.D Co. Ltd.
 Section- Pen U MI


 Dy. Executive Engineer
 M.S.E.D Co. Ltd.
 Pen Sub Division Pen

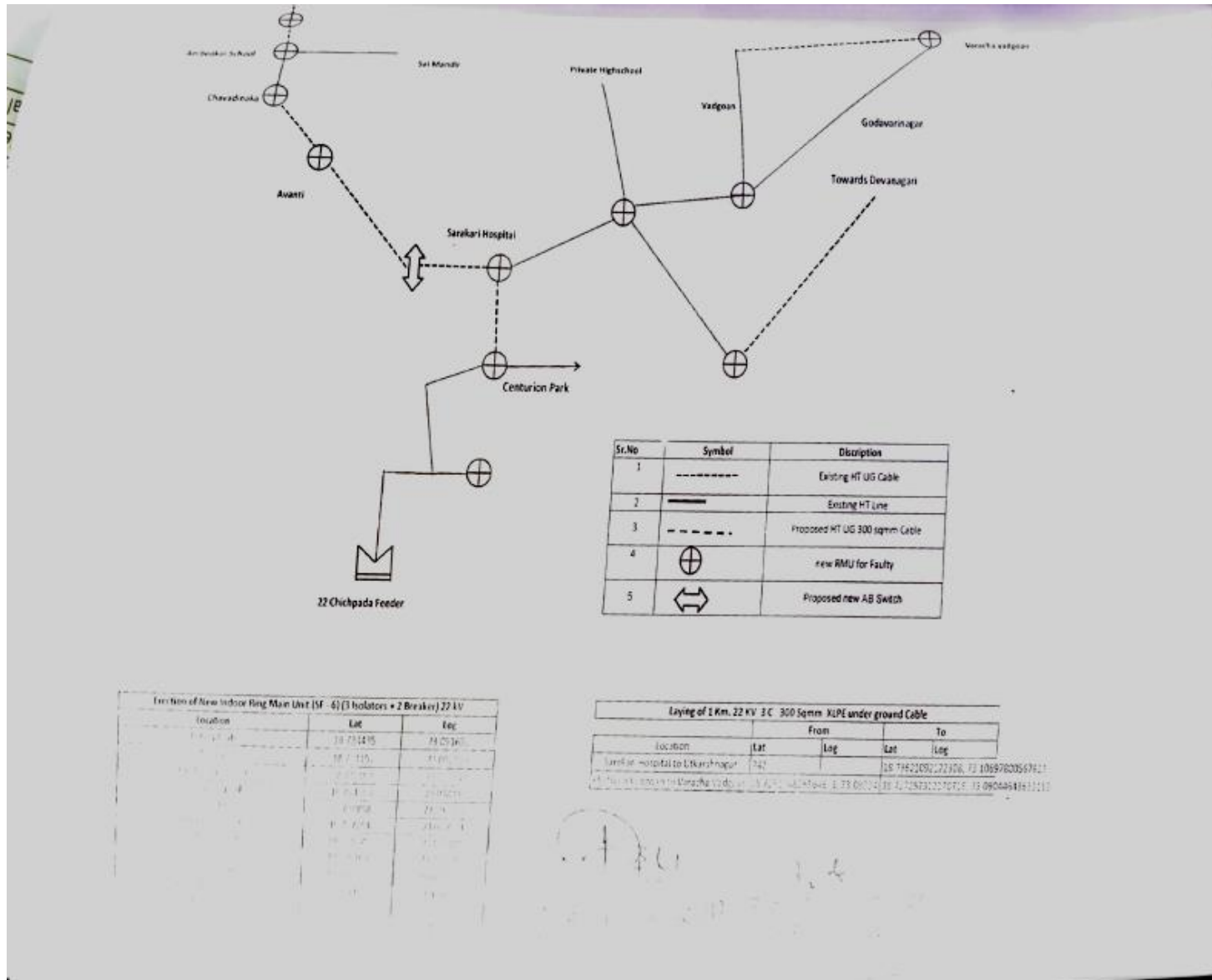
ANNEXURE-C

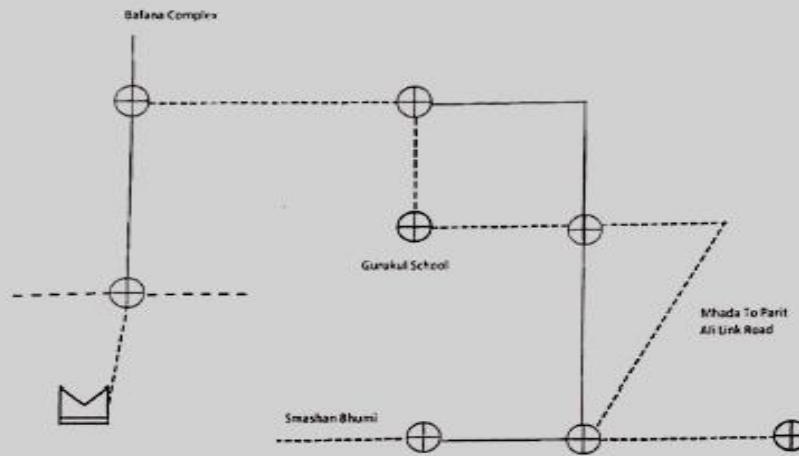


ANNEXURE-C



ANNEXURE-C






Sr.No	Symbol	Description
2	—	Existing HT Line
3	- - - -	Proposed HT UG 300 sqmm Cable
4	⊕	new RMU for Faulty
5	↔	Proposed new AB Switch

Erection of New Incode Ring Main Unit (SF - 6) (3 Isolators + 2 Breaker) 22 kV

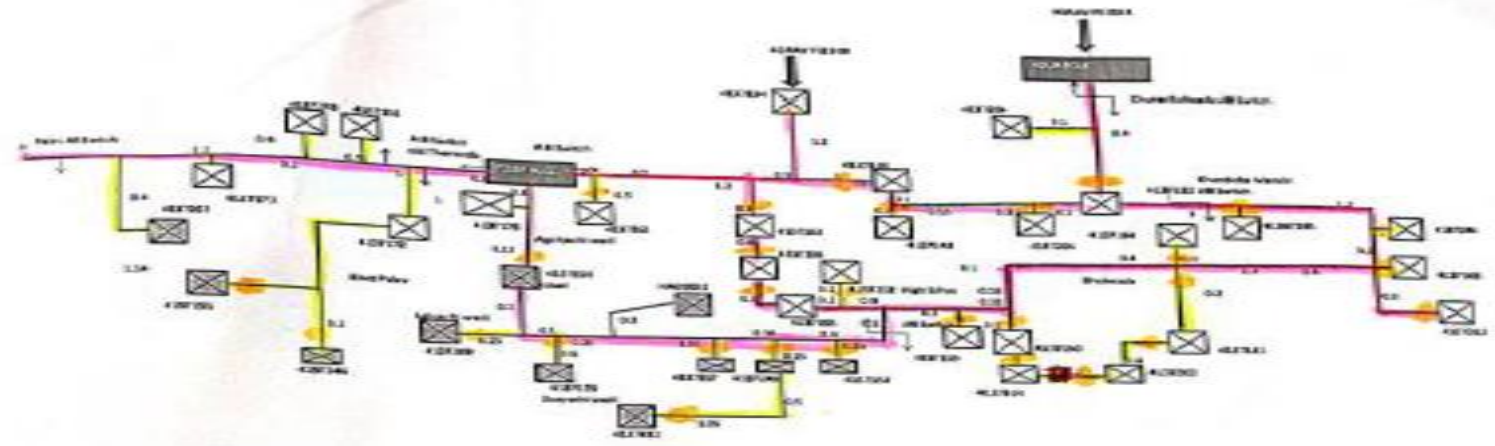
Location	Lat	Log
Rear Vishal complex	18 738143	73 090753
Bafana	18 740389	73 090090
Gurukul school Corner	18 741735	73 092282
Kumbhar Ali	18 744037	73 094367
Wast Ali GOD	18 743043	73 096445
Smashan Bhumi	18 742475	73 095527
Ghoda Pul	18 745667	73 096315
W. meter A1 Wariyak Apt	18 742800	73 094145

Laying of 1 Km. 22 kV 3C 300 Sqmm XLPE underground Cable

Location	From				To	
	Lat	Log	Start	End	Lat	Log
From Switching to Vishal Complex	18 737597	73 090843	Start	18 741908	73 092156	
Karodpati Bangalore to Parit Ali	18 742681	73 094175	End	18 743083	73 096496	


 Assistant Engineer Dy. Executive Engineer
 M.S.E.D. Co. Ltd. M.S.E.D. Co. Ltd.
 Section for Linking of Parit Sub Division, Parit

Kokon A patti Sammitaram DPR SLD under Revlonm I & II



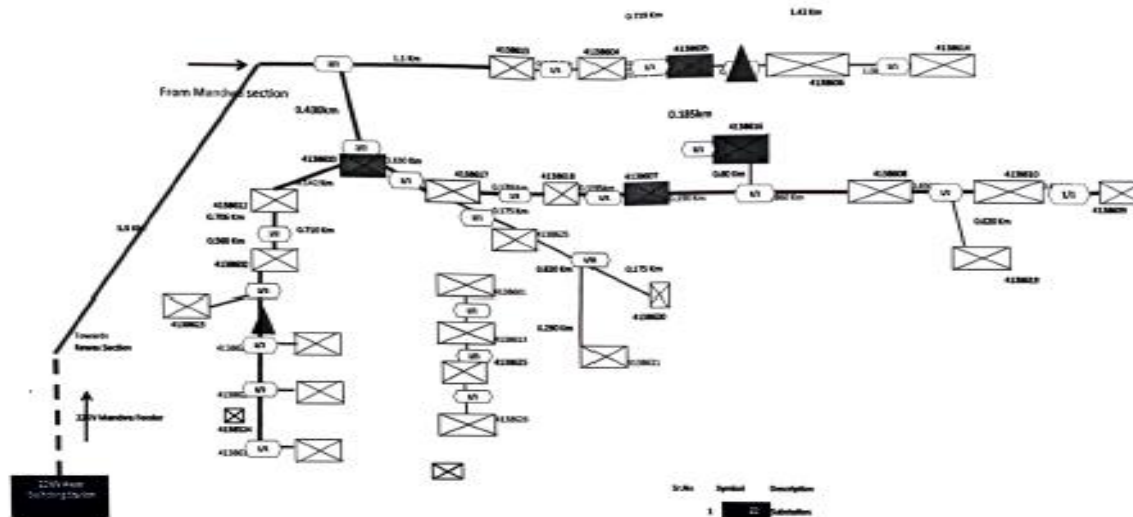
- Conversion of 22KV overhead line by 3C, 300 Sqmm XLPE UG Cable
- Conversion of 22KV overhead line by 3C, 85 Sqmm XLPE UG Cable
- 22 KV 2+2 RMU
- 22 KV 2+1 RMU

[Signature]
 JUNIOR ENGINEER (D)
 M. S. E. D. C. I. M.
 ALD & C SUB-DIVISION

Order Item No:
 Division No: 4184
 Subdivision: 4184/01
 Section No: 4184/01/01

Switching Station: 220V Area
 Feeder Name: 220V Mainline
 Feeder Code: 903

Activity No:
 Activity No:
 Activity No:



Component	Qty	Unit	Estimated	Actual	Value	Unit
Substation	1	EA	1	1	75,000	Rs
Feeder Tapping	1	EA	1	1	75,000	Rs
Feeder DTC	1	EA	1	1	75,000	Rs
Substation	1	EA	1	1	75,000	Rs
Feeder DTC	1	EA	1	1	75,000	Rs
Substation	1	EA	1	1	75,000	Rs
Feeder DTC	1	EA	1	1	75,000	Rs