

IFB NO. HLL/CHO-PROJ/KL-OPD/CIV&ELE/P-II/2017-18/02, DT. 28.08.2017

**TENDER FOR RENOVATION OF OUTPATIENT
DEPARTMENT
(CIVIL AND ELECTRICAL WORKS ON TURNKEY BASIS)**

FOR

**PRIMARY HEALTH CENTRES AT
THIRUVANANTHAPURAM TALUK,
THIRUVANANTHAPURAM DISTRICT, KERALA STATE**

IFB NO. HLL/CHO-PROJ/KL-OPD/CIV&ELE/P-II/2017-18/02, DT. 28.08.2017



HLL LIFECARE LIMITED

(A GOVT. OF INDIA ENTERPRISE)

Corporate and Registered Office:

HLL Bhavan, Poojappura,

Thiruvananthapuram – 695012, Kerala, India

Phone +91 471 2354949 / 2350961/2350959

Web: www.lifecarehll.com

ABSTRACT

SECTION No.	DESCRIPTION	PAGE No.
<u>PART A</u>		
SECTION I	INVITATION FOR BIDS (IFB)	03
SECTION II	INSTRUCTION TO BIDDERS (ITB)	05
SECTION III	GENERAL CONDITIONS OF CONTRACT (GCC)	14
SECTION IV	SPECIAL CONDITIONS OF CONTRACT (SCC)	20
SECTION V	QUALIFICATION CRITERIA	23
SECTION VI	PROFORMA ABOUT THE CONTRACTOR	24
SECTION VII	PERFORMANCE STATEMENT	25
SECTION VIII	INDEMNITY CLAUSE	26
SECTION IX	DECLARATION	27
<u>PART : B</u>		
SECTION X	ABSTRACT PRICE SCHEDULE	29
SECTION XI	PRICE SCHEDULE (I)	30

PART – A

SECTION I

INVITATION FOR BIDS (IFB)

Sealed and super scribed tenders, under Single Bid system, is invited from the eligible contractors, for execution of Renovation of Outpatient Department in Primary Health Centres at Puthupadi, Kozhicode District, Kerala State, The detailed work is given as in the **Price Schedule** to this Tender.

Sl. No	Details of PHC	EMD Amount In Rs
1	Vattiyoorkavu	Rs. 19,000
2	Jagathy	Rs.34,000

2. The bid documents will be available up to 15.00 Hrs. on the previous working day of the opening of the bids. The scheduled date for issue, receipt and opening of bids is as follows.
 - a) Date of issue of tender document - 28-08-2017 onwards
 - b) Last date and time for receipt of bids - 07-09-2017 up to 15.00 Hrs.
 - c) Date and time of opening of bids - 07-09-2017, 15.30 Hrs.
 - d) Address for communication, receipt and place of opening of bids:

ASSOCIATE VICE PRESIDENT (PROJECTS),
PROJECTS DIVISION,
HLL LIFECARE LIMITED (A Government of India Enterprise)
Corporate Head Office, Poojappura.P.O,
Thiruvananthapuram – 695012, Kerala, India Phn: 0471- 2354949, 2775588
E-mail: choprojects@lifecarehll.com

3. The completed and sealed bid documents should be submitted to Associate Vice President (Projects), in the above address along with the EMD. The outer cover should bear the Enquiry No, closing date and General description of item tendered, and the words “DO NOT OPEN BEFORE” 15.30 Hrs (IST) on ----- (Indicate the Closing Date). EMD shall be submitted in the form of demand draft drawn from a nationalized bank in favor of HLL Lifecare Limited payable at Thiruvananthapuram. Bids received after due date and time will be rejected. Any bid not accompanied by EMD will be rejected.
4. Bids will be opened in the presence of Bidders representative(s) who choose to attend on the specified date and time, at the office of HLL at the address given in Clause 2 (d) above.
5. In the event of the date specified for bid receipt and opening being declared as a closed holiday for the above purchaser’s office, the due date for submission of bids and opening of bids will be the following working day at the appointed times.

IFB NO. HLL/CHO-PROJ/KL-OPD/CIV&ELE/P-II/2017-18/02, DT. 28.08.2017

6. HLL may, at its discretion, extend this deadline for submission of bids by amending the Bid Documents or any other reasons, in which case all rights and obligations of HLL and Bidders previously subject to the deadline will thereafter be subject to the deadline as extended.
7. HLL will not be held responsible for the postal delay, if any, in the delivery of the bidding document or the non-receipt of the same. Bids sent by Telex/Fax/Telegraph will not be accepted.
8. The EMD should be enclosed in a separate envelope and super scribed as “EMD” and to be attached in the main cover.
9. SSI units interested in availing exemption from payment of EMD should submit a valid copy of their registration certificate issued by the concerned DIC or NSIC.
10. The company reserves the right to club or split the items of works, change the qualifying criteria at their discretion and to reject or cancel the Invitation for bids without assigning any reason thereof.

SECTION II INSTRUCTION TO BIDDERS

A. INTRODUCTION

1. Eligible Bidders

1.1 Only experienced contractors are eligible to participate in the tender.

The tenderer shall furnish, as part of its tender, relevant details and documents establishing its eligibility to quote and its qualifications to perform the contract if its tender is accepted.

1.2 The documentary evidence needed to establish the tenderer's qualifications shall fulfill the following requirements:

a) The tenderer has the required financial, technical and service capability necessary to perform the contract and, further, it meets the qualification criteria incorporated in the Section V in these documents.

1.3 a) The bidder should have **Minimum 3 years experience in the relevant field (SECTION V)**

b) The Tenderer should have executed satisfactorily at least 3 jobs preferably of similar kind (CIVIL AND ELECTRICAL WORKS) as mentioned in SECTION V – Qualification Criteria

1.4 Bidder submit annual turnover statement for last 3 financial years, each year not less than at least 15 lakhs, certified by Chartered Accountant.

1.5 Deleted.

2. Cost of Bidding

2.1 Cost of bidding shall be completely on the tenderer.

B. THE BIDDING DOCUMENTS

3. Contents of Bidding Documents

3.1 The work required, bidding procedures and contract terms are prescribed in the Bidding documents. In addition to the Invitation for Bids, the Bidding documents include:

a. Instruction to Bidders (ITB);

- b. General Conditions of Contract (GCC);
- c. Special Conditions of Contract (SCC);
- d. Qualification criteria;
- e. Proforma about the Contractor
- f. Performance statement
- g. Indemnity Clause
- h. Declaration
- i. Abstract Price Schedule
- j. Price Schedules

3.2 The Bidder is expected to examine all instructions, forms, terms and specifications in the Bidding Documents. Failure to furnish all information required by the Bidding Documents or submission of a bid not substantially responsive to the Bidding Documents in every respect will be at the Bidder's risk and may result in rejection of its bid.

4. Clarification of Bidding Documents

4.1 The Bidder, who require any clarification of the Bidding Documents may notify the Company in writing at the Company's mailing address indicated in the Invitation for Bids. The Company will respond in writing to any such request which is received not later than **3 days** prior to the deadline for submission of bids prescribed by the Company. Any such response (relevant) against the clarification of the tenderer shall be notified in our website only.

5. Amendment of Bidding Documents

5.1 At any time prior to the deadline for submission of bids, the Company may, for any reason, whether at its own initiative or in response to a clarification requested by a prospective bidder, modify the Bidding Documents by an amendment.

Those bidders who download the tender documents from our website should furnish the Name and address of the vendor, name of contact person, telephone and Email details immediately by Email to choprojects@lifecarehll.com. Any changes pertains to this tender shall be communicated only through our website www.lifecarehll.com

5.2 All prospective bidders who have received the Bidding Documents will be notified of the amendment in writing or by cable and will be binding on them.

5.3 In order to allow prospective bidders reasonable time in which to take the amendment into account in preparing their bid, the Company may, at its discretion, extend the deadline for the submission of bids

C. PREPARATION OF BIDS

6. Language of Bid

- 6.1 The Bid prepared by the bidder and all correspondence and documents relating to the bid exchanged by the Bidder and the Company, shall be written in the English language. Supporting documents and printed literature furnished by the Bidder may be written in another language provided they are accompanied by an accurate translation of the relevant passages in the English language in which case, for purposes of interpretation of the Bid, the English translation shall govern.

7. Documents Comprising the Bid

Following documents and forms are to be included in the bid respectively.

7.1 TECHNICAL DOCUMENTS

The technical bid shall consist of the following documents.

- a) **EMD shall be submitted in the form of Demand Draft from schedule Bank, drawn in favor of HLL Lifecare Limited, payable at Thiruvananthapuram.** The EMD/Bid Security shall be refunded to the non-responsive bidders within 60 days from the date of opening of Bid. The Tender received without EMD will be rejected.
- b) SSI/MSME units interested in availing exemption from payment of Tender Fee & EMD should submit a valid copy of their registration certificate issued by the concerned DIC or NSIC / **Udyog Aadhaar**. But the Party has to provide Security deposit if Tender is awarded to them.
- c) Copy of Balance sheet / Bank Statement for the past two financial years.
- d) Performance statement in the Proforma VII.
- e) Documentary evidence established in accordance with ITB Clause A1 that the Bidder is eligible to bid and is qualified to perform the contract if its bid is accepted;

7.2 PRICE SCHEDULE

Duly filled Bid Form i.e. Price Schedule Abstract and Price Schedule.

7.3 DISTRIBUTION OF WORK IN CASE OF AWARDING WORK TO MORE THAN ONE TENDERER:-

- i. The Company has the right to give the work under this tender to one or more contractors, for any number of site or partially or fully, at Company's own discretion.
- ii. The company reserves the right to distribute the work, site wise, at its discretion to different Tenderers who agree to do the work at the lowest rate accepted. However, the company is not bound to accept the lowest rate quoted by L1 bidder for all works tendered.

- iii. It is specifically made clear that the company reserves right to place the order for the other competent bidders (other than L1 bidder), subject to matching L1 rates.
- iv. Company has chosen to place work Orders with the Matched lowest contractor and when there are more than one such Matched lowest contractor, then the work Orders for the requirement of works will be placed among them at the discretion of the company to get the works executed within the limited time period.
- v. The Matched lowest contractor, on placement of work Order, will be deemed as lowest rate contractor for the purpose of the tender and all provisions of the tender documents applicable to L1 rate tenderer will apply mutatis mutandis to the Matched L1 contractor also.
- vi. If the lowest contractor has failed to execute the required works within the stipulated time, Company will cancel such work orders and on cancellation, Company will place work Orders with the alternate contractor(s) at the risk and cost of the defaulted contractor.
- vii. If the contractor fails to execute the work(s) for any of the Work Orders placed for the similar work(s), at any point of time, either fully or partly, within the stipulated time, Company is at liberty to place work Orders either with other Tenderers (in ascending order, viz., L2,L3 and so on) at the rates offered by them or with alternate sources and in such cases the defaulted contractor is liable to indemnify Company, WITH OUT ANY PROTEST OR DEMUR, for the difference in cost incurred by Company and the Company is entitled to recover the difference in cost from any amount due/payable to the defaulted supplier.

8. Bid Currencies

8.1 Prices shall be quoted in Indian Rupees.

9. Documents establishing bidder's eligibility and qualifications

9.1 Pursuant to ITB Clause 1, the bidder shall furnish, as part of its bid, documents establishing the bidder's eligibility to bid and its qualifications to perform the Contract.

9.2 The documentary evidence of the Bidder's qualifications to perform the Contract if its bid is accepted, shall establish to the Company's satisfactions.

(a) that the bidder has the financial and technical capability necessary to perform the Contract and meets the criteria outlined in the qualification requirements specified in Section V. All bids submitted shall include the following information:

Details of experience and past performance of the bidder on items offered and on those of similar nature and details of current contracts in hand and other commitments as per proforma given in Section VII

10. Scope of Documents:

- 10.1 For the purpose of the documentary evidence to be furnished pursuant to ITB Clause 9.2 above, the Bidder shall note that the standards for workmanship, material and references to brand names or catalogue numbers, if any, designated by the Company in its Tender schedules are intended to be descriptive only and not restrictive.

11. Period of Validity of Bids

- 11.1 Price shall be valid **for One year from the date of opening.**
- 11.2 In exceptional circumstances, the Company may solicit the bidders consent to an extension of the period of validity. The request and the responses thereto shall be made in writing.

12. Format and Signing of Bid.

- 12.1 The bidder shall prepare the bid clearly marking as appropriate
- 12.2 The bid shall be typed or written in indelible ink and shall be signed by the Bidder or a person or persons duly authorized to bind the Bidder to the Contract. The letter of authorization shall be indicated by written power-of-attorney accompanying the bid. All pages of the bid, except for printed literature, shall be initialed by the person(s) signing the bid.
- 12.3 Any interlineations, erasures or overwriting shall be valid only if they are initialed by the person or person(s) signing the bid.

D. SUBMISSION OF BIDS

13. Sealing and Marking of bids

- 13.1 The bidders shall seal the **Technical bid** and **Price bid** in a single cover, duly written on the envelope as

**“TENDER FOR RENOVATION OF
OPD AT PRIMARY HEALTH CENTRE AT
THIRUVANANTHAPURAM TALUK,
THIRUVANANTHAPURAM DISTRICT, KERALA STATE**

“HLL/CHO-PROJ/KL-OPD/CIV&ELE/P-II/2017-18/01, DT. 28.08.2017”

“DO NOT OPEN BEFORE 15.30 Hrs. on 07.09.2017 ”

13.2 The envelope shall be addressed to the following address:

ASSOCIATE VICE PRESIDENT (PROJECTS),
PROJECTS DIVISION,
HLL LIFECARE LIMITED (A Government of India Enterprise)
Corporate Head Office, Poojappura.P.O,
Thiruvananthapuram – 695012, Kerala, India
Phn: 0471- 2354949, 2775588
E-mail: choprojects@lifecarehll.com

- (a) If the envelope is not sealed and marked as required, the Company will assume no responsibility for the bid's misplacement or premature opening.
- (b) Bids must be received by the Company at the address specified not later than the date and time specified in the Invitation for Bid. In the event of the specified date for the submission of bids, being declared a holiday for the Company, the bids will be received up to the appointed time on the next working day.
- (c) The Company may, at its discretion, extend this deadline for the submission of bids by amending the bidding documents in which case all rights and obligations of the Company and bidders previously subject to the deadline will thereafter be subject to the deadline as extended.

14. LATE BIDS

14.1 Any bid received by the Company after the deadline for submission of bids prescribed by the Company, will be rejected and returned unopened to the bidder.

15. MODIFICATION AND WITHDRAWAL OF BIDS

15.1 The bidder may modify or withdraw its bid after the bid submission, provided that written notice of the modification or withdrawal is received by the Company prior to the deadline prescribed for submission of bids.

15.2 The bidder's modification or withdrawal notice shall be prepared, sealed, marked and dispatched in accordance with the provisions of ITB Clause 15. A withdrawal notice may also be sent by cable, but followed by a signed confirmation copy, post-marked not later than the deadline for submission of bids.

15.3 No bid may be modified subsequent to the deadline for submission of bids.

15.4 No bid may be withdrawn in the interval between the deadline for submission of bids and the expiration of the period of bid validity specified by the bidder in the Bid Document.

E. BID OPENING AND EVALUATION

16. Opening of Bids by Company

- 16.1 The Company will open all bids, in the presence of bidder's representatives who choose to attend, at 15.30 Hrs on 02.09.2017 at the following Office

ASSOCIATE VICE PRESIDENT (PROJECTS),
PROJECTS DIVISION,
HLL LIFECARE LIMITED (A Government of India Enterprise)
Corporate Head Office, Poojappura.P.O,
Thiruvananthapuram – 695012, Kerala, India
Phn: 0471- 2354949, 2775588
E-mail: choprojects@lifecarehll.com

- 16.2 In the event of the specified date of bid opening being declared a holiday for the Company, the bids shall be opened at the appointed time and location on the next working day.
- 16.3 The bidder's names, modifications, bid withdrawals and the presence or absence of the requisite documents and such other details as the Company, at its discretion, may consider appropriate will be announced at the opening. No bid shall be rejected at bid opening, except for late bids, which shall be returned unopened to the bidder.
- 16.5 The Company will scrutinize the technical bid for compliance to the conditions and documentation requirement as per the bid document. The bidders will be short-listed on the basis of responsiveness of technical bid & Price bid. The short listed bidders will be informed about the time, date and venue of the price bid opening.

17. CLARIFICATION OF BIDS

- 17.1 During evaluation of bids, the Company may, at its discretion, ask the bidder for a clarification of its bid. The request for clarification and the response shall be in writing and no change in prices or substance of the bid shall be sought, offered or permitted.

18 PRELIMINARY EXAMINATION

- 18.1 The Company will examine the bids to determine whether they are complete, whether any computational errors have been made, whether the documents have been properly signed, and whether the bids are generally in order.
- 18.2 Arithmetical errors will be rectified on the following basis. If there is a discrepancy between the unit price and the total price that is obtained by multiplying the unit price and quantity, the unit price shall prevail and the total

price shall be corrected. If there is a discrepancy between words and figures, the amount in words will prevail. If the bidder does not accept the correction of the errors, its bid will be rejected.

- 18.3 The Company may waive any minor informality or non-conformity or irregularity in a bid, which does not constitute a material deviation, provided such a waiver does not prejudice or affect the relative ranking of any bidder.
- 18.4 Prior to the detailed evaluation, pursuant to Clause ITB 21, the Company will determine the substantial responsiveness of each bid to the bidding documents. For purposes of these clauses a substantially responsive bid is one which conforms to all the terms and conditions of the bidding documents without material deviations. Deviations from or objections or reservations to critical provisions such as those concerning Warranty, Force Majeure, Applicable law and Taxes and Duties will be deemed to be material deviation. The Company's determination of a bid's responsiveness is to be based on the contents of the bid itself without recourse to extrinsic evidence.
- 18.5 If a bid is not substantially responsive, it will be rejected by the Company and may not subsequently be made responsive by the bidder by correction of the non-conformity.

19. EVALUATION AND COMPARISON OF BIDS

- 19.1 The Company will evaluate and compare bids previously determined to be substantially responsive, pursuant to ITB Clause 20.

20. CONTACTING THE COMPANY

- 20.1 No bidder shall contact the Company on any matter relating to its bid, from the time of the bid opening to the time the contract is awarded. If the bidder wishes to bring additional information to the notice of the Company it should do so in writing.
- 20.2 Any effort by a bidder to influence the Company in its decisions on bid evaluation, bid comparison, or selection may result in the rejection of the bidders bid.

F. AWARD OF CONTRACT

21. POST QUALIFICATION

- 21.1 The determination will take into account the bidders financial, technical capabilities. It will be based upon an examination of the documentary evidence of the bidder's qualifications submitted by the bidder, pursuant to ITB Clause 1 as well as such other information as the Company deems necessary and appropriate.
- 21.2 An affirmative determination will be a prerequisite for award of the contract to the bidder. A negative determination will result in rejection of the bidders bid, in

which event the Company will proceed to the next lowest evaluated bid to make a similar determination of that bidder's capabilities to perform satisfactorily.

22. AWARD CRITERIA

- 22.1 Subject to ITB Clause 7.3, the Company will award the contract to the successful bidder whose bid has been determined to be substantially responsive and as the lowest evaluated bid, provided further that the bidder is determined to be qualified to perform the contract satisfactorily.

23. COMPANY'S RIGHT TO VARY QUANTITIES AT TIME OF AWARD

- 23.1 The Company reserves the right at the time of award of contract to increase or decrease the quantity of materials and services originally specified in the bid document without any change in unit price or other terms and conditions within the bid validity period.

24. COMPANY'S RIGHT TO ACCEPT ANY BID AND TO REJECT ANY OR ALL BIDS

- 24.1 The Company reserves the right to accept or reject any bid, and to annul the bidding process and reject all bids at any time prior to award of Contract, without thereby incurring any liability to the affected bidder or bidders.

25. NOTIFICATION OF AWARD

- 25.1 Prior to the expiration of the period of bid validity, the Company will notify the successful bidder in writing by registered letter or by mail, to be confirmed, that its bid has been accepted.
- 25.2 The notification of award will bind the successful bidder to enter into a detailed agreement with the Company within 10 days from the date of notification of award.

SECTION III GENERAL CONDITIONS OF CONTRACT

1. DEFINITIONS

1.1 In this contract the following terms shall be interpreted as indicated:

- (a) “The Contract” means the agreement entered into between the Company and the Contractor as recorded in the Contract Form signed by the parties, including all the attachments and appendices thereto and all documents incorporated by reference therein;
- (b) “The Contract Price” means the price payable to the Contractor under the Contract for the full and proper performance of its contractual obligations;
- (c) “The Materials” means all the products and/or other materials which the Contractor is required to be used in the work under the Contract;
- (d) “Services” means services ancillary to the works, other incidental services, such as installation, commissioning, provision of technical assistance, and other obligations of the Contractor covered under the contract.
- (e) “GCC” means the General Conditions of Contract contained in this section.
- (f) “SCC” means the Special Conditions of Contract.
- (g) “The Company” means the Organization contracting the work, as named in SCC;
- (h) “The Contractor” means the individual or firm undertaking the work / Service under this Contract;
- (i) “Day” means calendar day.
- (j) “Handing over period” means the period applicable upto completion of work and testing by the contractor at the required location mentioned in service purchase order and accepted by the Company.
- (k) “Earnest Money Deposit” (EMD) means Bid Security / monetary or financial guarantee to be furnished by a tenderer along with its tender”.

2. APPLICATION

- 2.1 These General Conditions shall apply to the extent that they are not superseded by provisions in other parts of the Contract.

3. STANDARDS

- 3.1 The Work executed under this Contract shall conform to the standard requirements mentioned in the schedule.

4. USE OF CONTRACT DOCUMENTS AND INFORMATION

- 4.1 The Contractor shall not, without the Company's prior written consent, disclose the Contract, or any provision thereof, or any specification, plan, drawing, pattern, sample or information furnished by or on behalf of the Company in connection therewith, to any person other than a person employed by the Contractor in performance of the Contract. Disclosure to any such employed person shall be made in confidence and shall extend only so far as may be necessary for purposes of such performance.
- 4.2 The Contractor shall not, without the Company's prior written consent, make use of any document or information enumerated in GCC Clause 4.1 except for purposes of performing the Contract.
- 4.3 Any document, other than the Contract itself, enumerated in GCC clause 4.1 shall remain the property of the Company and shall be returned (in all copies) to the Company on completion of the contractor's performance under the Contract if so required by the Company.

5. INSPECTION AND TESTS

- 5.1 The Company or its representative shall have the right to inspect and/or to test the materials to confirm their conformity to the Contract at no extra cost of the Company. The Special conditions of Contract and/or the Technical Specifications shall specify what inspections and tests the Company requires and where they are to be conducted. The Company shall notify the Contractor in writing of the identity of any representatives retained for these purposes.
- 5.2 The inspections and test may be conducted on the premises, at point of completion and/or at the time of handing over the execution. The Contractor or its subcontractor(s), all reasonable facilities and assistance shall be extended to the inspectors at no charge to the Company.
- 5.3 Should any inspected or tested materials/work fail to meet with the schedule requirement, the Company may reject them and the Contractor shall either replace the rejected materials or make all alternations necessary to meet schedule requirements free of cost to the Company.
- 5.4 The Company's right to inspect, test and, where necessary, reject the materials/work at site shall in no way be limited or waived by reason of the Materials having previously been inspected, tested and passed by the Company or its representative.

6 INCIDENTAL SERVICES

- 6.1 The contractor may be required to provide any or all of the services with respect to this tender, including additional services, if any, specified in SCC:

7. WARRANTY

- 7.1 The Contractor warrants that the Materials used under this Contract are new, unused, of the most recent or current models and incorporate all recent improvements in design and materials unless provided otherwise in the Contract. The contractor further warrants that the Materials supplied under this Contract shall have no defect arising from design, materials or workmanship (except when the design and/or material is required by the Company's specifications) or from any act or omission of the Contractor, that may develop under normal use of the supplied Materials in conditions obtaining in the state/country of final destination.
- 7.2 This warranty shall remain **valid for one year** after work completion handing over and accepted as indicated in the Contract.
- 7.3 The Company shall promptly notify the contractor in writing of any claims arising under this warranty.
- 7.4 Upon receipt of such notice, the Contractor shall, within the period specified in SCC and with all reasonable speed, repair or replace the defective Materials or parts thereof, without cost to the Company
- 7.5 If the Contractor, having been notified, fails to remedy the defect(s) within the period specified in SCC within a reasonable period, the Company may proceed to take such remedial action as may be necessary, at the Contractor's risk and expense and without prejudice to any other rights which the Company may have against the Contractor under the contract.

8. PAYMENT

- 8.1 The method and conditions of payment to be made to the Contractor under the Contract shall be specified in the Special Conditions of Contract.
- 8.2 Payment shall be made in Indian Rupees

9. PRICES

- 9.1 Prices charged by the Contractor for Work/Services performed under the Contract shall not vary from the prices quoted/agreed by the Contractor in its bid, with the exception of any prices adjustments authorized in the special Conditions of Contract or in the Company's request for bid validity extensions, as the case may be.

10. CONTRACT AMENDMENTS

10.1 Subject to GCC Clause 17, no variation in or modification of the terms of the Contract shall be made except by written amendment signed by the parties.

11. ASSIGNMENT

11.1 The Contractor shall not assign, in whole or in part, its obligations to perform under the contract, except with the Company's prior written consent.

12. SUBCONTRACTS

12.1 The supplier shall notify the Company in writing of all subcontracts awarded under the contract if not already specified in his bid. Such notification, in his original bid or later, shall not relieve the Supplier from any liability or obligation under the contract.

13. LIQUIDATED DAMAGES

13.1 If the Contractor fails to perform the contract/services within the period(s) specified in the Contract, the Company shall, without prejudice to its other remedies under the Contract, deduct from the Contract Price, as liquidated damages, a sum equivalent to the percentage specified in SCC of the delivered price of the delayed unperformed contract/Services for each week or part thereof of delay until actual handing over or performance, up to a maximum deduction of the percentage specified in the SCC if any. Once the maximum is reached, the Company may consider termination of the Contract.

14. TERMINATION BY DEFAULT

14.1 The Company may, without prejudice to any other remedy for breach of contract, by written notice of default sent to the contractor, terminate the Contract in whole or part;

(a) if the Contractor fails to complete any or all of the work within the time period(s) specified in the Contract, or within any extension thereof granted by the Company, or

(b) if the Contractor fails to perform any other obligation(s) under the contract.

14.2 In the event the Company terminates the Contract in whole or in part, the Company may execute, upon such terms and in such manner as it deems appropriate, Work or Services similar to those unperformed, and the Contractor shall be liable to the Company for any excess costs for such similar Works. However, the Contractor shall continue the performance of the Contract to the extent not terminated.

15. FORCE MAJEURE

- 15.1 For purposes of this Clause “Force Majeure” means an event beyond the control of the Contractor and not involving the Contractor’s fault or negligence and not foreseeable. Such events may include, but are not limited to, acts of the Company either in its sovereign or contractual capacity, wars or revolutions, fires, floods, epidemics, quarantine restrictions and freight embargoes.
- 15.2 If a Force Majeure situation arises, the Contractor shall promptly notify the Company in writing of such conditions and the cause thereof. Unless otherwise directed by the Company in writing, the Contractor shall continue to perform its obligations under the Contract as far as is reasonably practical, and shall seek all reasonable alternative means for performance not prevented by the force majeure event.

16. TERMINATION FOR INSOLVENCY

- 16.1 The Company may at any time terminate the Contract by giving written notice to the Contractor, if the Contractor becomes bankrupt or otherwise insolvent. In this event, termination will be without compensation to the Contractor, provided that such termination will not prejudice or affect any right of action or remedy, which has accrued or will accrue thereafter to the Company.

17. RESOLUTION OF DISPUTES/ ARBITRATION

- 17.1 The Company and the contractor shall make every effort to resolve amicably by direct informal negotiation any disagreement or dispute arising between them under or in connection with the Contract.
- 17.2 If, after thirty (30) days from the commencement of such informal negotiations, the Company and the Contractor have been unable to resolve amicably a Contract dispute, either party may require that the dispute be referred for resolution to the formal mechanisms specified in the General Conditions of Contract (Arbitration Clause 20.3). These mechanisms may include, but or not limited to, conciliation mediated by a third Party, adjudication in an agreed national forum, and national arbitration.
- 17.3 If, HLL and the Contractor have been unable to resolve amicably a Contract dispute, such dispute or disagreement shall be settled in accordance with the Arbitration and Conciliation Act 1996. The Arbitral Tribunal shall consist of Sole Arbitrator, to be chosen from the Panel of Arbitrators notified by the Institute of Engineers (India), Kerala Chapter. Venue of the Arbitration shall be Thiruvananthapuram. Language of arbitration shall be English. Award of the Sole Arbitrator will be final and binding upon the Parties.

17.4 Subject to above mentioned Arbitration clause the jurisdiction of any disputes, suits and proceeding arising out of the tender shall be only in the court of Thiruvananthapuram.

18. GOVERNING LANGUAGE

18.1 The contract shall be written in English language. English language version of the Contract shall govern its interpretation. All correspondence and documents pertaining to the Contract which are exchanged by the parties shall be written in the same language.

19. APPLICABLE LAW

19.1 The Contract shall be interpreted in accordance with the laws of the Union of India.

20. NOTICES

20.1 Any notice given by one party to the other pursuant to this Contract shall be sent to other party in writing or by cable and confirmed in writing to the other Party's address specified in Special Conditions of Contract.

20.2 A notice shall be effective when delivered or on the notice's effective date, whichever is later.

21. TAXES AND DUTIES

21.1 Contractors shall be entirely responsible for all taxes, licenses, statutory levies etc., incurred until handing over of the contracted site / service to the Company.

SECTION IV

SPECIAL CONDITIONS OF CONTRACT

The following Special Conditions of Contract shall supplement the General Conditions of Contract. Whenever there is a conflict, the provisions herein shall prevail over those in the General Conditions of contract. The Corresponding clause number of the General Conditions is indicated in parentheses.

1. The work shall be completed **within 15 Days** from the date of receipt of firm Work Order / L.O.I.
2. The contractor may inspect the site at Kerala before quoting the work and any clarification regarding clarification on site and other tender related queries shall be clarified with HLL in the address/phone/email provided in the document.
3. During the execution of the work the contractor or authorized representative should be present at site.
4. Statutory deduction like Income tax, ESI, PF etc will be deducted from the Contractor's bill as per the statutory rules.
5. Security deposit: 5% of executed value shall be deducted from the each bill and shall be released after defect liability period of ONE year.
6. Bidder shall quote for all the schedules in the tender, if any schedule is not quoted, then the bidder will be treated as non-responsive.
7. The contractor can submit ONE running account bills during the work period and payment made as below:
 - a) 80% of the bill value will be paid on each running account bill submitted by the contractor.
 - b) Balance 20% will be paid along with the final bill only after issue of Work Completion certificate by Engineer In Charge/Officer In Charge of HLL Lifecare Ltd.

5% amount of the Bill will be retained as retention money and will be released only after the Defect liability period of 12 months.

The running account bills are to be submitted detailing the work description, quantity and rate as per the Work Order. Payment will be made against actual measurements recorded and certified jointly by HLL Engineer in charge and the Contractor's representative.

Tax Deduction: All statutory deductions like GST, Income Tax, Works Contract Tax, E.S.I., P.F. or any other government-imposed liabilities shall be borne by the Contractor (as applicable at the time of execution of job) and shall be deducted from each bill submitted by the Contractor.

8. Measurement & Payment terms:

- a) The method of measurement of completed work shall be in accordance with the standard measurement. Payment will be made on satisfactory completion of work as per the order. Interim or running account bills shall be submitted by the contractor for the work executed on the basis of such recorded measurements in the format of HLL. All such interim payments shall be regarded as payment by way of advances against final payment only, and shall not preclude the requiring of bad, unsound and imperfect or unskilled work to be rejected, removed, taken away and reconstructed or re erected. Any certificate given by the officer relating to the work done or materials delivered forming part of such payment, may be modified, or corrected by any subsequent such certificate(s) or by the final certificate and shall not by itself be conclusive evidence that any work or material so which it relates is /are in accordance with the contract and certificate. Any such interim payment,/any part there of shall not in any respect conclude, determine or affect in any way powers of the engineer in charge under the contract or any of such payment s be treated as final settlement and adjustment of accounts or in any way vary or affect the contract.
 - b) If contractor is executing any extra items as per direction of Engineer in charge / Officer in charge, the rates shall be worked out as per the latest CPWD Schedule of Rates and in case, the item is not included in the CPWD schedule, the rate shall be arrived as per prevailing Market rates.
 - c) The Quantity shown in the schedule is an approximate estimated quantity. No rate revision will be entertained if the quantity increases/decreases due to the site condition while executing the work.
 - d) Measurement is to be recorded in each stage of the work and the payment will be made on actual measurement of the work as per the order.
 - e) Final payment shall be paid only after clearing the site as per direction of Engineer-in-charge/ Officer in charge.
9. All the materials and tools required for the work shall be procured by the contractor and brought to the site to complete the work in the time frame. Entry of men/ materials should be done through the security gate only and the details of the same shall be recorded in the register kept at the security office and the copy of details shall be submitted to the Projects in-charge. All the material brought to the work shall be as per the schedule and samples of materials shall be handed to the project in-charge.
10. The contractor has to arrange all the necessary insurance coverage for the materials/ machines / work men deployed by him at his own cost.
11. Water and Electricity: The contractor shall make his own arrangement for water and electricity required for the works. HLL will not be responsible for the supply of either electricity or water.

12. If the Contractor fails to execute any or all of the work or perform the Services within the time period(s) specified in the Tender/Purchase Order / Work order, the HLL shall, without prejudice to its other remedies under the Contract, deduct from the Contract Price, as penalty, a sum equivalent to the percentage specified in the various terms and conditions of the contract.
13. A delay by the Contractor in the performance of its contract obligations shall render the Contractor liable to the imposition of penalty pursuant to this tender/Work Order/contract, unless an extension of time is agreed upon pursuant to agreement/Work Order without the application of liquidated damages.
14. Penalty shall be imposed as per the company rules for any delay committed by the contractor in completing the work as per the order. (Ref. Clause.16 - LIQUIDATED DAMAGES)

15. CONTRACT AMENDMENTS

No variation in or modification of the terms of the Contract shall be made except by written amendment signed by the parties.

15. ASSIGNMENT

The Contractor shall not assign, in whole or in part, its obligations to perform under the contract, except with the HLL's prior written consent.

16. LIQUIDATED DAMAGES

If the Contractor fails to perform the Services within the period(s) specified in the Contract, the HLL shall, without prejudice to its other remedies under the Contract, deduct from the Contract Price, as liquidated damages, a sum equivalent to 2.5 percentage of the value of the delayed Work or unperformed Services for each week or part thereof of delay until actual completion of performance, up to a maximum deduction of 15 percentage. Once the maximum is reached, the HLL may consider termination of the Contract.

SECTION V QUALIFICATION CRITERIA

(Referred to in Clause 1 of ITB Eligible Bidders)

A) For Civil

- 1) The bidder should have **Minimum 3 years experience in the relevant field.**
- 2) The Tenderer should have executed satisfactorily at least 3 jobs preferably of similar kind in the last 3 years, each contract valued atleast Rs. 5 Lakhs.

B) For Electrical

- 1) The bidder should have **Minimum 3 years experience in the relevant field.**
- 2) The Tenderer should have executed satisfactorily at least 3 jobs preferably of similar kind in the last 3 years, each contract valued atleast Rs. 5 Lakhs.

The bidder should fulfil all the mentioned criteria and proof of such document shall be submitted long with the bid, failing which bid will be treated as non-responsive.

SECTION VI

PROFORMA ABOUT THE CONTRACTOR

“HLL/CHO-PROJ/KL-OPD/CIV&ELE/P-II/2017-18/01, DT. 28.08.2017”
(Please attach detailed proforma incorporating the information given below)

Tender No.....
DATE OF OPENING.....

NAME OF THE TENDERER:.....

1. Name & Full address of the Contractor:

- (a) PAN No
- (b) GST No *****

(specify whether registered with Kerala State. Attach relevant copies as proof of evidence)

- (a) Any other details
- (b) Specify whether SSI / MSME unit

2. (a) Telephone No. Office/Personal
(b) Fax No. Office/Personal
(c) e-mail address

3. Details of Staff:

- a) technical :
- b) skilled :
- c) unskilled :

SEAL OF THE TENDERER

SIGNATURE
NAME AND ADDRESS OF TENDERER

SECTION VII

PROFORMA FOR PERFORMANCE STATEMENT

Proforma for Performance Statement (for a period of last 3 years)

HLL/CHO-PROJ/KL-OPD/CIV&ELE/P-II/2017-18/01, DT. 28.08.2017

Name of the Tenderer:.....

Name & Address of the Tenderer / Service Provider:.....

.....

Order placed by (Full Address of Company / Consignee)	Order No. and Date	Description and quantity of ordered work and service	Value of order	Date of Completion of Contract		Remarks indicating reasons for delay, if any	Have the works been satisfactorily maintained? (Attach a documentary proof)
				As per Contract	Actual		

We hereby certify that if at any time, information furnished by us is proved to be false or incorrect, we are liable for any action as deemed fit by the Company in addition to forfeiture of earnest money.

Signature and Seal of the Bidder

.....

SECTION VIII

HLL LIFECARE LIMITED

(A Government of India Enterprise)
Projects Division Corporate Head Office, Poojappura.P.O,
Thiruvananthapuram – 695012, Kerala, India
Phn: 0471- 2354949, 2775588

HLL/CHO-PROJ/KL-OPD/CIV&ELE/P-II/2017-18/01, DT. 28.08.2017

INDEMINITY CLAUSE

If the contractor fails to execute the order within the time prescribed for the handing over of works ordered or violates or infringes the existing rates as agreed to as mentioned in the work order, the contractor shall and will indemnify the company against all loses or damages whatsoever to be incurred or sustained including the legal cost or expenses incurred by the company by reason of non-handing over of works at agreed quantity and rate with in the time specified in the work order. The company will initiate legal action if the contractor fails to execute the work order as per the schedule in the work order for the actual loss suffered. No quantity tolerance will be permitted in this regard unless otherwise prior approval is taken by the company before executing any excess quantity and shall be at the risk of the contractor. Responsiveness of the Bid shall be at the discretion of HLL.

The contractor shall have no right to change the quantity stipulated in the work order.

Bid pronounced Non Responsive by HLL shall be summarily rejected.

The decision of HLL will be final and no correspondence of this shall be entertained.

We have read and understood the above conditions and agree to abide by the same.

**PLACE:
DATE:**

**NAME AND SIGNATURE OF THE TENDERER
(WITH OFFICE SEAL)**

IFB NO. HLL/CHO-PROJ/KL-OPD/CIV&ELE/P-II/2017-18/02, DT. 28.08.2017

SECTION IX

HLL LIFECARE LIMITED
(A Government of India Enterprise)
Projects Division Corporate Head Office, Poojappura.P.O,
Thiruvananthapuram – 695012, Kerala, India
Phn: 0471- 2354949, 2775588

HLL/CHO-PROJ/KL-OPD/CIV&ELE/P-II/2017-18/01, DT. 28.08.2017

DECLARATION

I / WE, The Bidder undertake, we shall execute, within the purview of the contract, all the works and activities includes; transportation, loading, unloading and other technical work for the installation of the equipment at the designated site as per the schedule/contract /work order, at **Kerala**.

We confirm having read and understood all the schedule requirements, instructions, forms, terms and conditions and other requirements of the above tender (both expressed and implied) in full and that we agree to abide by all without any deviation.

SEAL OF THE TENDERER

SIGNATURE
NAME AND ADDRESS OF TENDERER

PART : B

SECTION X ABSTRACT PRICE SCHEDULE

SECTION XI PRICE SCHEDULE

SECTION X

HLL LIFECARE LIMITED

(A Government of India Enterprise)
Projects Division Corporate Head Office, Poojappura.P.O,
Thiruvananthapuram – 695012, Kerala, India
Phn: 0471- 2354949, 2775588

**RENOVATION OF OPD AT PRIMARY HEALTH CENTRES AT
THIRUVANANTHAPURAM TALUK,
THIRUVANANTHAPURAM DISTRICT, KERALA STATE
(CIVIL AND ELECTRICAL WORKS ON TURNKEY BASIS)**

ABSTRACT PRICE BID

Section. No.	Details of Hospital	Amount Quoted (Rs)
XI A	Renovation Of OPD at Primary Health Centres at Vattiyoorkavu	
XI B	Renovation Of OPD at Primary Health Centres at Jagathy	
Total Rs (Including GST):		

Total words in Rupees: _____

* Bidder shall clearly mention whether the GST included or excluded with % in the price bid. If specific indication of GST is not mentioned, then their quoted rate will be treated as inclusive of GST.

Bidder has to quote as per the Make/Brand specified in the BOQ, proposed to use for the project, and has to marks the Make/Brand in the quote / price schedule.

SEAL OF THE TENDERER

Date:

**SIGNATURE
NAME AND ADDRESS OF TENDERER**

SECTION XI A

**RENOVATION OF OPD AT PRIMARY HEALTH CENTRES AT VATTIYOORKAVU ,
THIRUVANANTHAPURAM TALUK, THIRUVANANTHAPURAM DISTRICT, KERALA STATE**

SL.No	Description	Qty	Unit	Rate DSR	Amount
CIVIL WORKS					
1	Cleaning the site and removing debris with carriage of material by manual labour including loading ,unloading and stacking for lead less than 0.5 KM,also cleaning the renovated area including cleaning of wall t,floor tiles ,plumbing materials,windows ,doors etc complete whichever in that area new/exsisting after the completion of works as per the direction of site in charge		Ls		
2	Dismantling doors, windows and clerestory windows (steel aluminum or wood) shutter including chowkhats, architrave, holdfasts etc. complete and stacking within 50 metres lead Of area 3 sq. metres and below	RO	Each		
3	Dismantling tile work in floors and roofs laid in cement mortar including stacking material within 50 metres lead.	0.00	Sqm		
2	Demolishing brick work manually/ by mechanical means including stacking of serviceable material and disposal of unserviceable material within 50 metres lead as per direction of Engineer-in-charge.In cement mortar	0.00	cum		
3	Demolishing R.C.C. work by mechanical means and stockpiling at designated locations and disposal of dismantled materials up to a lead of 1 kilometre, stacking serviceable and unserviceable material separately including cutting reinforcement bars.	0.00	cum		
4	Earth work in excavation by manual means (exceeding 30cm in depth. 1.5m in width as well as 10 sqm on plan) including disposal of excavated earth, lead upto 50m and lift upto 1.5m, disposed earth to be levelled and neatly dressed:All kinds of soil	5.00	cum		
5	Filling available excavated earth (excluding rock) in trenches, plinth, sides of foundations yard levelling etc., in layers not exceeding 20cm in depth: consolidating each deposited layer by ramming and watering etc complete, and form uniform level .	15.00	cum		
3	Providing and laying in position cement concrete of specified grade excluding the cost of centering and shuttering - All work up to plinth level :1:4:8 (1 Cement : 4 coarse sand : 8 graded stone aggregate 40 mm nominal size)	1.00	cum		
4	Random rubble masonry with hard stone in foundation and plinth including levelling up with cement concrete 1:6:12 (1 cement : 6 coarse sand : 12 graded stone aggregate 20 mm nominal size) upto plinth level with :Cement mortar 1:6 (1 cement : 6 coarse sand)	0.00	Sqm		

**RENOVATION OF OPD AT PRIMARY HEALTH CENTRES AT VATTIYOORKAVU ,
THIRUVANANTHAPURAM TALUK, THIRUVANANTHAPURAM DISTRICT, KERALA STATE**

SL.No	Description	Qty	Unit	Rate DSR	Amount
5	Providing and laying damp-proof course 50 mm thick with cementconcrete 1:2:4 (1 cement : 2 coarse sand : 4 graded stone aggregate20 mm nominal size).	RO	Sqm		
4	Brick work with common burnt clay F.P.S. (non modular) bricks of class designation 7.5 in superstructure above plinth level up to floor V level in all shapes and sizes in :In cement mortar				
	Cement mortar 1:4(1 cement : 4 coarse sand	7.00	Cu.M		
5	Cement block masonry work using with locally available cementbricks in superstructure above plinth level in 10 cm wall thk				
	Cement mortar 1:4(1 cement : 4 coarse sand	0.00	Sqm		
5	12mm cement plaster on the rough side of single or half brick wall of mix : 1 : 4 (1 cement : 4 fine sand) for internal walls, column and beams etc	37	Sqm		
6	Reinforced cement concrete work in walls (any thickness), includingattached pilasters, buttresses, plinth and string courses, fillets, columns,pillars, piers, abutments, posts and struts etc. up to floor five level,excluding cost of centering, shuttering, finishing and reinforcement :				
	1:1.5:3 (1 cement : 1.5 coarse sand : 3 graded stone aggregate20 mm nominal size)	1.00	cum		
7	Centering and shuttering including strutting, propping etc. and removal of form for :				
	Suspended floors, roofs, landings, balconies and access platform	4.00	sqm		
8	Steel reinforcement for R.C.C. work including straightening, cutting,bending, placing in position and binding all complete upto plinth level & above plinth level.				
	hermo-Mechanically Treated bars	29.00	Kg		

**RENOVATION OF OPD AT PRIMARY HEALTH CENTRES AT VATTIYOORKAVU ,
THIRUVANANTHAPURAM TALUK, THIRUVANANTHAPURAM DISTRICT, KERALA STATE**

SL.No	Description	Qty	Unit	Rate DSR	Amount
6	Providing and fixing aluminium work for doors, windows, ventilators and partitions with extruded built up standard tubular sections/ appropriate Z sections and other sections of approved make conforming to IS: 733 and IS: 1285, fixing with dash fasteners of required dia and size, including necessary filling up the gaps at junctions, i.e. at top, bottom and sides with required EPDM rubber/ neoprene gasket etc. Aluminium sections shall be smooth, rust free, straight, mitred and jointed mechanically wherever required including cleat angle, Aluminium snap beading for glazing / paneling, C.P. brass / stainless steel screws, all complete as per architectural drawings and the directions of Engineer-in-charge. (Glazing, paneling and dash fasteners to be paid for separately) :				
a).	For Fixed Portion , Powder coated aluminium (minimum thickness of powder coating 50 micron)	72.00	Kg		
b).	For shutters of doors, windows & ventilators including providing and fixing hinges/ pivots and making provision for fixing of fittings wherever required including the cost of EPDM rubber / neoprene gasket required (Fittings shall be paid for separately). Powder coated aluminium (minimum thickness of powder coating 50 micron)	8.00	Kg		
7	Providing and fixing 12 mm thick prelaminated particle board flat pressed three layer or graded wood particle board conforming to IS: 12823 Grade I Type II, in panelling fixed in aluminum doors, windows shutters and partition frames with C.P. brass / stainless steel screws etc. complete as per architectural drawings and directions of Engineer-in-charge. Providing and fixing 12 mm thick prelaminated particle board flat pressed three layer or graded wood particle board conforming to IS: 12823 Grade I Type II, in panelling fixed in aluminum doors, windows shutters and partition frames with C.P. brass / stainless steel screws etc. complete as per architectural drawings and directions of Engineer-in-charge.				
	Prelaminated particle board with decorative lamination on both sides	13.00	sqm		
8	Providing and fixing glazing in aluminium door, window, ventilator shutters and partitions etc with PVC/neoprene gasket etc. complete as per the architectural drawings and the directions of engineer-in-charge.				
a)	With float glass panes of 5.5 mm thickness	10.00	sqm		
9	Providing and fixing aluminium tower bolts ISI marked anodised (anodic coating not less than grade AC 10 as per IS: 1868) transparent or dyed to required colour or shade with nuts and screws etc. complete-				

**RENOVATION OF OPD AT PRIMARY HEALTH CENTRES AT VATTIYOORKAVU ,
THIRUVANANTHAPURAM TALUK, THIRUVANANTHAPURAM DISTRICT, KERALA STATE**

SL.No	Description	Qty	Unit	Rate DSR	Amount
a)	250 X 10 mm	1	each		
b).	150x10mm	1	each		
10	Providing and fixing 100mm brass locks (best make of approved quality) for aluminium doors including necessary cutting and making good etc. complete.	2	each		
11	Filling the gap in between aluminium frame & adjacent RCC/ Brick/ Stonework by providing weather silicon sealant over backer rod of approved quality as per architectural drawings and direction of Engineer-in-charge complete	RO	metre		
11	Providing and fixing aluminium handles ISI marked anodised (anodic coating not less than grade AC 10 as per IS: 1868) transparent or dyed to required colour or shade with nuts and screws etc. complete-				
a)	125 mm	2	each		
12	Providing and fixing 18mm thick gang saw cut mirror polished premoulded and prepolished) machine cut for kitchen platforms, vanity counters, window sills , facias and similar locations of required size of approved shade, colour and texture laid over 20mm thick base cement mortar 1:4 (1 cement : 4 coarse sand) with joints treated with white cement, mixed with matching pigment, epoxy touch ups, including rubbing, curing, moulding and polishing to edges to give high gloss finish etc. complete at all levels. Granite of any colour and shade: Area of slab over 0.50 sqm.: Lowest retail price not less than Rs. 2000.00/m2(Granite to be selected by the Engineer in charge)	4.00	sqm		
13	Mirror polishing on marble work/Granite work/stone work where ever required to give high gloss finish complete.	0.00	Sqm		
14	Providing and laying joint free Vitrified <i>anti skid matt finished tiles</i> in different sizes (thickness to be specified by manufacturer) with water absorption less than 0.08 % and conforming to I.S. 15622, of approved make (Johnson & Johnson/Kajariea/Nitco) in all white/off white colours & shade in skirting, riser of steps, over 12 mm thick bed of cement mortar 1:3 (1 cement: 3 coarse sand), including grouting the joint with white cement & matching pigments etc. complete.Size of Tile 600x600 mm (Lowest retail price not less than Rs. 880/m2) (Tiles to be selected by the Engineer in charge) for Labor room	0.00	Sqm		

**RENOVATION OF OPD AT PRIMARY HEALTH CENTRES AT VATTIYOORKAVU ,
THIRUVANANTHAPURAM TALUK, THIRUVANANTHAPURAM DISTRICT, KERALA STATE**

SL.No	Description	Qty	Unit	Rate DSR	Amount
15	Providing and fixing tiled false ceiling of approved materials of size 595x595 mm in true horizontal level suspended on inter locking metal grid of hot dipped galvanized steel sections (galvanized @ 120 gsm/sqm, both side inclusive) consisting of main "T" runner with suitably spaced joints to get required length and of size 24x38mm made from 0.30mm thick (minimum) sheet, spaced at 1200mm center to center and cross "T" of size 24x25mm made of 0.30mm thick (minimum) sheet, 1200mm long spaced between main "T" at 600mm center to center to form a grid of 1200x600 mm and secondary cross "T" of length 600mm and size 24x25mm made of 0.30 mm thick (minimum) sheet to be interlocked at middle of the 1200x600mm panel to form grids of 600x600mm and wall angle of size 24x24x0.3 mm and laying false ceiling tiles of approved texture in the grid including, wherever, required, cutting/making, opening for services like diffusers, grills, light fittings, fixtures, smoke detectors etc.				
	Main "T" runners to be suspended from ceiling using GI slotted cleats of size 27 x 37 x 25 x1.6 x mm fixed to ceiling with 12.5 mm dia and 50 mm long dash fasteners, 4mm GI adjustable rods with galvanised butterfly level clips of size 85 x 30 x 0.8 mm spaced at 1200mm center to center along main T, bottom exposed width of 24 mm of all T-sections shall be pre-painted with polyester paint, all complete at all heights as per specifications drawings and as directed by Engineer-in-charge.				
	12.5 mm thick square edge PVC Laminated Gypsum Tile of size 595x595 mm, made of Gypsum plasterboard,manufactured from natural gypsum as per IS 2095 part I and laminated with white 0.16mm thick fire retardant PVC film on the face side and 12micron metalized polyester on the back side with all edges sealed with the face side PVC film which goes around and wraps the edges and is bonded to the edges and the back side metalized polyester film so as to make the tile a completely sealed unit.	0.00	Sqm		
16	Providing and laying rectified Anti skid Glazed Ceramic floor tiles 300x300mm or more (thickness to be specified by the manufacturer) of 1 st quality conforming to IS : 15622 of approved make in colours white,Ivory, Grey, Fume, Red Brown, laid on 20mm thick cement mortar 1:4 (1 cement: 4 coarse sand)including grouting the joints with white cement and matching pigments etc.complete.	0.00	sqm		

**RENOVATION OF OPD AT PRIMARY HEALTH CENTRES AT VATTIYOORKAVU ,
THIRUVANANTHAPURAM TALUK, THIRUVANANTHAPURAM DISTRICT, KERALA STATE**

SL.No	Description	Qty	Unit	Rate DSR	Amount
17	Providing and fixing 1st quality ceramic glazed wall tiles conforming to IS:15622 (thickness to be specified by the manufacturer), of approved make,in all colours, shades except burgundy, bottle green, black of any size as approved by Engineer-in-Charge, in skirting, risers of steps and dados,over 12 mm thick bed of cement mortar 1:3 (1 cement : 3 coarse sand) and jointing with grey cement slurry @ 3.3kg per sqm, including pointing in white cement mixed with pigment of matching shade complete.	0.00	sqm		
18	Providing and fixing M.S. grills of required pattern in frames of windows Fixed to openings /wooden frames with rawl plugs screws etc with M.S. flats, square or round bars etc. including priming coat with approved steel primer all complete.	0.00	kg		
19	Removing white or colour wash by scrapping and sand papering and preparing the surface smooth including necessary repairs to scratches etc. complete	300.00	sqm		
20	Applying one coat of water thinnable cement primer of approved brand and manufacture on wall surface ,Water thinnable cement primer	300.00	sqm		
21	Providing and applying plaster of paris putty of 2 mm thickness over plastered surface to prepare the surface even and smooth complete	0.00	sqm		
22	Wall painting with acrylic emulsion paint of approved brand and manufacture to give an even shade –Two or more coats on new work.-internal walls	200.00	sqm		
23	Finishing walls with Acrylic Smooth exterior paint of required shade :	100.00	sqm		
24	Painting wood work with Deluxe Multi Surface Paint of required shade. Two or more coat applied @ 0.90 ltr/10 sqm over an under coat of primer applied @0.75 ltr/ 10 sqm of approved brand and manufacture	0.00	sqm		
25	Painting Steel work with Delux Multi surface paint to give an even shade.Two or more coat applied @ 0.90 ltr/10sqm over an over an under coat of primer applied @ 0.80ltr/10sqm of approved brand or manufacture.	0.00	sqm		

**RENOVATION OF OPD AT PRIMARY HEALTH CENTRES AT VATTIYOORKAVU ,
THIRUVANANTHAPURAM TALUK, THIRUVANANTHAPURAM DISTRICT, KERALA STATE**

SL.No	Description	Qty	Unit	Rate DSR	Amount
26	Providing and fixing factory made PVC door frame made of PVC extruded section having an overall dimensions as below (tolerance $\pm 1\text{mm}$), with wall thickness 2.0mm ($\pm 0.2\text{mm}$), corners of the door frame to be joined with galvanized brackets and stainless steel screws, joints mitered and plastic welded. The hinged side vertical of the frames reinforced by galvanized M.S. tube of size 19x19 mm and 1mm ($\pm 0.1\text{mm}$) wall thickness and 3 nos. Stainless steel hinged fixed to the frame complete as per manufacturers Specification and direction of engineering - in-charge : Extruded section profile size 48x40 mm	11.00	m		
27	Providing and fixing existing door frames: 24 mm thick factory made PVC door shutters made of styles and rails of a UPVC hollow section of size 59x24 mm and wall thickness 2 mm ($\pm 0.2\text{mm}$) with in built edging on both sides. The styles and rails mitered and joint at the corners by means of M.S. galvanized / plastic brackets of size 75x220 mm having wall thickness 1.0 mm and stainless steel screws. The styles of the shutter reinforced by inserting galvanized M.S. tube of size 20x20 mm and 1mm ($\pm 0.1\text{mm}$) wall thickness. The lock rail made up of " H" section, a UPVC hollow section of size 100x24 mm and 2mm ($\pm 0.2\text{mm}$) wall thickness, fixed to the shutters styles by means of plastic/ galvanized M.S.'U' cleats. The shutter frame filled with a UPVC multi chambered single panel of size not less than 620mm, having over all thickness of 20mm and 1mm ($\pm 0.1\text{mm}$) wall thickness. The panes filled vertically and tie bar at two places by inserting horizontally 6mm galvanized M.S. rod and fastened with nuts and washers, complete as per manufacturer's specification and direction of Engineer- in - charge. (for W,C and bath room	4.00	m ²		
28	Structural steel work riveted, bolted or welded in built up sections, trusses and framed work, including cutting, hoisting, fixing in position and applying a priming coat of approved steel primer all complete.	2.10	MT		

**RENOVATION OF OPD AT PRIMARY HEALTH CENTRES AT VATTIYOORKAVU ,
THIRUVANANTHAPURAM TALUK, THIRUVANANTHAPURAM DISTRICT, KERALA STATE**

SL.No	Description	Qty	Unit	Rate DSR	Amount
29	Supply and Laying in cladding & Roofing COLOUR COATED sheet with guard flim made out of 0.5mm TCT 550MPa cold rolled sheet with hot dip metallic coating of Aluminium Zinc alloy 150gms/sq.m.The colour shall have a total coating thickness of 35 microns of an super Polyester colorbond XRW quality paint system or equivalent as per AS/NZS-2728:1997 (category 3), comprising of 20 microns exterior coat on top surface and 5 micron reverse coat on back surface over 5 micron primer coat on both surfaces and having 975/1000mm cover width with 26mm high crest at 195/200mm c/c in lengths as approved by Architect also to suit to site requirements and fixed with necessary suitable imported galvanized carbon steel self drilling and self tapping screws of BUILDEX or corroshield confirming to ASTM 3566-1990 (class- III) of required diameter and length as approved all complete with EPDM sealing washers, foam fillers wherever necessary, silicon sealent wherever necessary. The RAL Colour shall be 9006. No extra payable due to shade selection.	145.00	SQM		
30	Providing and laying factory made chamfered edge Cement Concrete paver blocks In foot path, park & lawns driveway or light & traffic parking etc. of required strength, thickness & size/ shape, made by table vibratory method using PU mould, laid in required colour & pattern over 50mm thick compacted bed of course sand, compacting and proper embedding/laying of inter locking paver blocks into the sand bedding layer through vibratory compaction by using plate vibrator, filling the joints with sand and cutting of paver blocks as per required size and pattern, finishing and sweeping extra sand, all complete as per manufacturer's specifications & direction of Engineerin- Charge.60mm thick Cement concrete paver block of M-35 grade with approved colour, design & pattern.	16.20	Sqm		

**RENOVATION OF OPD AT PRIMARY HEALTH CENTRES AT VATTIYOORKAVU ,
THIRUVANANTHAPURAM TALUK, THIRUVANANTHAPURAM DISTRICT, KERALA STATE**

SL.No	Description	Qty	Unit	Rate DSR	Amount
	Plumbing works				
31	Providing and fixing gun metal gate valve with C.I. wheel of approved quality -25MM	3	sqm		
32	Providing and fixing C.P. brass angle valve for basin mixer and geyserpoints of approved quality conforming to IS:8931 a) 15 mm nominal bore: 15 mm nominal bore.Make:Hindware,Cera,Jaquar etc..	3	Nos.		
33	Providing and fixing PTMT Bottle Trap for Wash basin and sink.Bottle trap 38mm single piece moulded with height of 270mm, effective length of tail pipe 260mm from the centre of the waste coupling 77mm breadth with 25mm minimum water seal, weighing not less than 263gms.	RO	Nos		
34	Providing and fixing trap of self cleansing design with screwed down orhinged grating with or without vent arm complete, including cost of cuttingand making good the walls and floors :100 mm inlet and 100 mm outlet	2	Nos		
35	Constructing brick masonry manhole in cement mortar 1:4 (1 cement : 4 coarse sand) with R.C.C. top slab with 1:2:4 mix (1 cement : 2 coarse sand : 4 graded stone aggregate 20 mm nominal size), foundation concrete 1:4:8 mix (1 cement : 4 coarse sand : 8 graded stone aggregate 40 mm nominal size), inside plastering 12 mm thick with cement mortar 1:3 (1 cement : 3 coarse sand) finished with floating coat of neat cement and making channels in cement concrete 1:2:4 (1 cement : 2 coarse sand : 4 graded stone aggregate 20 mm nominal size) finished with a floating coat of neat cement complete as per standard design : With common burnt clay F.P.S designation 7.5	RO	Nos		
36	Providing and fixing square – mouth PVC. Gully trap grade “A” complete with CI grating brick masonry chamber with water tight tight CI cover with frame of 300 x 300mm size (inside) the weight of cover to be not less than 4.50 kg and frame to be not less than 2.70 kg as per standard design	RO	Nos		
37	Providing and fixing white vitreous china pedestal type water closet(European type W.C. pan) with seat and lid, 10 litre low level white P.V.C.flushing cistern, including flush pipe, with manually controlled device(handle lever), conforming to IS : 7231, with all fittings and fixturescomplete, including cutting and making good the walls and floors wherever required :W.C. pan with ISI marked white solid plastic seat and lid	2	Nos		

**RENOVATION OF OPD AT PRIMARY HEALTH CENTRES AT VATTIYOORKAVU ,
THIRUVANANTHAPURAM TALUK, THIRUVANANTHAPURAM DISTRICT, KERALA STATE**

SL.No	Description	Qty	Unit	Rate DSR	Amount
38	Providing and fixing wash basin with C.I. brackets, 15 mm C.P. brass pillar taps, 32 mm C.P. brass waste of standard pattern, including painting of fittings and brackets, cutting and making good the walls wherever require: White Vitreous China Wash basin size 630x450 mm with a pair of 15 mm C.P. brass pillar taps	RO	Nos		
39	Supplying and providing Polyethylene Septic Tanks unique size and 3 chamber design with all accessories branded like United , for a capacity of 5000 litre (100 flush/day) including all material and labour charge for fittings		Ls		
40	Providing and fixing Chlorinated Polyvinyl Chloride (CPVC) pipes, having thermal stability for hot & cold water supply including all CPVC plain & brass threaded fittings i/c fixing the pipe with clamps at 1.00 m spacing. This includes jointing of pipes & fittings with one step CPVC solvent cement and the cost of cutting chases and making good the same including testing of joints complete as per direction of Engineer in Charge. Concealed work including cutting chases and making good the walls etc				
a)	20 mm nominal outer dia .Pipes	15	metre		
b)	32 mm nominal outer dia Pipes	RO	metre		
C)	50 mm nominal outer dia Pipes	15	metre		
41	Providing and fixing Stainless Steel A ISI 304 (18/8) kitchen sink as per IS: 13983 with C.I. brackets and stainless steel plug 40 mm, including painting of fittings and brackets, cutting and making good the walls wherever required ::(Lowest retail price of sink not less than Rs. 3150)				
	Kitchen sink without drain board, Size -610x510 mm bowl depth 200 mm	1	each		
42	Providing and fixing PVC Waste pipe for sink or wash basin including PVC waste fittings complete.:Semi rigid pipe 32mm dia	1	Nos.		
43	Providing and fixing CP Waste coupling for wash basin and sink of approved quality, colour and make. Waste coupling 31mm of 79mm length and 62mm breadth, weighing not less than 45 gms. Make:Hindware,Jaquar etc.,	RO	Nos.		

**RENOVATION OF OPD AT PRIMARY HEALTH CENTRES AT VATTIYOORKAVU ,
THIRUVANANTHAPURAM TALUK, THIRUVANANTHAPURAM DISTRICT, KERALA STATE**

SL.No	Description	Qty	Unit	Rate DSR	Amount
44	Extra for providing opening of required size & shape for wash basin/ kitchen sink in kitchen platform, vanity counter and similar location in marble/ Granite/stone work, including necessary holes for pillar taps etc. including moulding, rubbing and polishing of cut edges etc. complete.	RO	each		
45	Providing and fixing 600x450 mm beveled edge mirror of superior glass (of approved quality) complete with 6 mm thick hard board ground fixed to wooden cleats with C.P. brass screws and washers complete.	2	each		
46	Providing and fixing PTMT towel rail complete with brackets fixed to wooden cleats with CP brass screws with concealed fitting arrangement of approved quality and colour. 600mm long towel rail with total length of 645mm, width 78mm and effective height of 88mm, weighing not less than 190gms.	2	each		
47	Providing and fixing PTMT liquid soap container 109mm wide, 125mm high and 112mm distance from wall of standard shape with bracket of the same materials with snap fittings of approved quality and colour. weighing not less than 105 gms.	2	each		
48	Supplying and providing PVC type water tank for a maximum capacity of 10000 litre including supporting structure		Ls		
	<u>Non shedule Items</u>				
49	Missallaneous works like Dismantling of exisisting roof polycarbonate sheet, Door semi closing etc		Ls		
50	Providing and fixing C.P. brass long body bib cock of approved quality conforming to IS standards and weighing not less than 690 gms. 15 mm nominal bore	2	Nos.		
51	Supplying and providing auto closer for aluminium doors Fully controlled closing with adjustable speed between 180° - 20° , good quality meterial like brand-Dorma or equelet , Capacity of meterila should be according to door size, and the directions of Engineer-in-charge	1	each		
52	Suppying and providing elbow action surgical tap confirming with ISI branded like jaquar ,grohe etc	RO	each		
53	Supplying and providing curtains for doors and windows using good quality type standered meterilas ,colour and specification of meterilas should be as per the instruction of site in charge	RO	sqm		
54	Supplying and providing etched stickers on window glass	RO	sqm		

**RENOVATION OF OPD AT PRIMARY HEALTH CENTRES AT VATTIYOORKAVU ,
THIRUVANANTHAPURAM TALUK, THIRUVANANTHAPURAM DISTRICT, KERALA STATE**

SL.No	Description	Qty	Unit	Rate DSR	Amount
55	Supplying and providing Nursing station - it includes supplying of 4feet X 2feet readymade table (plywood/MDF with laminated finishing) with minimum two drawers also supplying a chair - one nos GI/SS type, Table and chair should be good quality branded type as per the instruction of site in charge		Ls		
56	Supplying and providing shoe rack - good quality mild steel type with painting with a capacity of keeping 10 pair of shoes ,as per the direction of site in charge		Ls		
57	Providing and fixing C.P. brass long body bib cock of approved quality conforming to IS standards and weighing not less than 690 gms. 15 mm nominal bore	RO	Nos.		
58	Providing & fixing of CP Health faucet. Hand operated spray unit (instand type)	2	Set		
59	Providing and fixing PVC pipes for water supply arrangements including cost pipes, fittings, solvent cement,testing of pipes, labour charges etc complete : Concealed work including cutting chases and making good the wall etc				
a)	20mm dia. PVC pipe	20	Mtr.		
b)	25mm dia. PVC pipe	RO	Mtr.		
c)	32mm dia. PVC pipe	20	Mtr.		
60	Providing and fixing CP grating of 6mm thick with rim including setting in floor with white cement mortar and making good the floor				
a)	125mm dia	2	Nos.		
61	Providing and fixing PVC soil, waste and vent pipe to IS : 13592 of SWR quality including all fittings, like : Bends, Tees, Elbows, Collars, junction, inspection doors, cowls, offsets, access pipes, jointing with rubber ring / solvent cement by application of leak proof adhesive like FRP paste including cutting holes in walls and floors and making good. Make:Supreme,Finolex,Prince etc.,				
a)	50mm dia	10	Mtr.		
b)	110mm dia	10	Mtr.		
Total Civil works					

**RENOVATION OF OPD AT PRIMARY HEALTH CENTRES AT VATTIYOORKAVU ,
THIRUVANANTHAPURAM TALUK, THIRUVANANTHAPURAM DISTRICT, KERALA STATE**

SL.No	Description	Qty	Unit	Rate DSR	Amount
ELECTRICAL WORKS					
1	Point wiring in PVC conduit with modular type switch.				
	Wiring for light point/fan point/exhaust fan point /call bell point with 1.5 sq mm FR PVC insulated copper conductor single core cable in surface/recessed medium class PVC conduit, with modular switch, modular plate, suitable PVC box and earthing the point with 1.5 sq.mm FR PVC insulated copper conductor single core cable etc as required.				
	Group C	0	Point		
2	Wiring through PVC conduit				
	Wiring for circuit/submain wiring along with earth wire with the following sizes of FR PVC insulated copper conductor, single core cable in surface/recessed medium class PVC conduit as required.(Make:Havells/Finolex/V-guard/Polycab)				
a	2X1.5 sq.mm + 1X1.5 sq.mm earth wire	25	Metre		
b	2X2.5 sq.mm + 1 X2.5 sq mm earth wire	50	Metre		
c	2X4 sq.mm + 1X4 sq.mm earth wire	40	Metre		
2.1	Telephone wiring in existing conduit:				
	Supplying and drawing following pair 0.5 sq mm FR PVC insulated annealed copper conductor, unarmored telephone cable in the existing surface/ recessed steel/ PVC conduit as required.				
a	2 Pair	0	Metre		
3	A/C point				
	S/F 20A SPN MCB industrial socket outlet: Supplying and fixing 20 amps, 240 volts, SPN industrial type, socket outlet, with 2 pole and earth, metal enclosed plug top alongwith 20 amps "C" curve, SP, MCB, in sheet steel enclosure, on surface or in recess, with chained metal cover for the socket out let and complete with connections, testing and commissioning etc. as required.(Make: Legrand/Havells/HPL)	0	Point		
4	Modular type blanking plate:				
	Supplying and fixing modular blanking plate on the existing modular plate & switch box excluding modular plate as required.(Make: Legrand/Havells/HPL)	2	Each		

**RENOVATION OF OPD AT PRIMARY HEALTH CENTRES AT VATTIYOORKAVU ,
THIRUVANANTHAPURAM TALUK, THIRUVANANTHAPURAM DISTRICT, KERALA STATE**

SL.No	Description	Qty	Unit	Rate DSR	Amount
5	Modular boxes, bases & cover plate:				
	Supplying and fixing following size/modules, GI box along with modular base & cover plate for modular switches in recess etc as required.(Make: Legrand/Havells/HPL)				
a	3 module	3	Each		
b	6 module	2	Each		
6	Modular type switch/socket:				
	Supplying and fixing following modular switch/socket on the existing modular plate & switch box including connections but excluding modular plate etc as required. (Make: Legrand/Havells/HPL)				
a	5/6 Amps switch	14	Each		
b	3 pin 5/6 Amp socket outlet	14	Each		
c	15/16 Amps switch	2	Each		
d	6pin 15/16 Amps (universal) socket outlet	2	Each		
e	Telephone socket outlet	1	Each		
7	S/F PVC conduit:				
	Supplying and fixing of following sizes of medium class PVC conduit along with accessories in surface/recess including cutting the wall and making good the same in case of recessed conduit as required.(ISI Make)				
a	25 mm	80	Metre		
8	ITC Fluorescent fitting directly on surface: Installation, testing and commissioning of pre-wired, fluorescent fitting / compact fluorescent fitting/LED of all types, complete with all accessories and tube etc. directly on ceiling/ wall, including connection with 1.5 sq. mm FR PVC insulated, copper conductor, single core cable and earthing etc. as required.	0	Each		
9	ITC Ceiling fan: Installation, testing and commissioning of ceiling fan, including wiring the down rods of standard length (upto 30 cm) with 1.5 sq. mm FR PVC insulated, copper conductor, single core cable etc. as required.	5	Each		
10	Supplying and fixing two module stepped type electronic fan regulator on the existing modular plate switch box including connections but excluding modular plate etc. as required.	4	Each		

**RENOVATION OF OPD AT PRIMARY HEALTH CENTRES AT VATTIYOORKAVU ,
THIRUVANANTHAPURAM TALUK, THIRUVANANTHAPURAM DISTRICT, KERALA STATE**

SL.No	Description	Qty	Unit	Rate DSR	Amount
11	CABLE SUPPLY, LAYING AND TERMINATION				
	Wiring for circuit/ submain wiring along with earth wire with the following sizes of FR PVC insulated copper conductor, single core cable in surface/ recessed medium class PVC conduit as required.				
a	From Main to DB				
	2 X 6 sq. mm + 1 X 6 sq. mm earth wire	20	Metre		
12	Supply of 15W LED tube fitting sleek with decorative end cap, powder coated CRCA steel channel complete with all electrical accessories like electronic ballast, lamp holder, 28W LED lamp etc complete as required. (Philips / Wipro /HAVELLS)	0	Each		
12.1	Supply and installation of 18 W CFL with its all accessories.[ISI MAKE]	1	Each		
13	Supply and installation of 1200 mm sweep Ceiling fan, white colour, 5 star rated as per BEE complete with blades, down rod, shackle, canopy etc(Make Havells/bajaj/usha/V-guard/crompton)	4	Each		
13.1	Supply and installation of wall fan, white colour, 3 star rated as per BEE complete with its all accessories(Make Havells/bajaj/usha/V-guard)	1	Each		
14	S/F SP & N DB:				
	Supplying and fixing following way prewired SP&N MCB, distribution board of steel sheet for 240 volts on surface/recess complete with loose wire box, terminal connectors for all incoming and outgoing circuits, duly prewired with suitable size FR PVC insulated copper conductor up to terminal blocks, tinned copper bus bar, neutral link, earth bar, detachable gland plate, interconnections, powder painted including earthing etc.as required(But without MCB/RCCB/Isolator) (Make: Legrand/Havells/HPL)				
	16 way SPN, double door	1	Each		

**RENOVATION OF OPD AT PRIMARY HEALTH CENTRES AT VATTIYOORKAVU ,
THIRUVANANTHAPURAM TALUK, THIRUVANANTHAPURAM DISTRICT, KERALA STATE**

SL.No	Description	Qty	Unit	Rate DSR	Amount
14.1	S/F of DP ISOLATOR				
	Supplying and fixing following rating, double pole, (single phase and neutral), 240 volts, ISOLATOR having a sensitivity current upto 100 to 300 milliamperes in the existing MCB DB complete with connections, testing and commissioning etc, as required.(Make: Legrand/Havells/HPL)				
	40 A, 4P isolator	1	Each		
14.2	S/F of SP MCB				
	Supplying and fixing 6 amps to 10 amps rating, 240 Volts, "C" series, miniature circuit breaker suitable for lighting and other loads of following poles in the existing MCB DB complete with connections, testing and commissioning etc as required.(Make: Legrand/Havells/HPL)				
	6/10A SP MCB	14	Each		
15	Miscellaneous Items				
15.1	Miscellaneous electrical work, removing of existing conduits and interconnections of light,6A socket/16A socket/A/C point from existing DB	0	LS		
15.2	Supply and pointing exhaust fan shutter type white colour-9"/10"(Make Havells/Bajaj/Almonard)	0	Each		
16	Miscellaneous work for removing & supply of old 3 nos of 5A switch & 5A sockets and 2-bulb, 1-CFL with its all accessories only as per the direction of engineer in charge.[ISI MAKE]	0	LS		
	Total Electrical works				
	Grand TOTAL				
	TAXES				
	GRAND TOTAL (INCLUSIVE OF TAXES)				
	I agree to complete the work as per the schedule at the rates quoted by me as above.				
			BIDDER		
	* RO -Rate Only				
	LS-Lump Sum				

SECTION XI B

**RENOVATION OF OPD AT PRIMARY HEALTH CENTRES AT JAGATHY ,
THIRUVANANTHAPURAM DISTRICT,KERALA STATE**

No	Description	Qty	Unit	Rate	Amount
CIVIL WORKS					
1	Cleaning the site and removing debris with carriage of material by manual labour including loading ,unloading and stacking for lead less than 0.5 KM,also cleaning the renovated area including cleaning of wall t,floor tiles ,plumbing materials,windows ,doors etc complete whichever in that area new/exsisting after the completion of works as per the direction of site in charge		LS		
2	"RCC M20 (Design Mix) using hard blue granite metal 20mm and down gauge including centering, shuttering, curing etc., complete but excluding cost of reinforcement Note: Polythene sheet shall be provided under the slabs." In Foundation, Footing and bed blocks at all levels.	1.00	cum		
3	Providing and laying in position cement concrete of specified grade excluding the cost of centering and shuttering - All work up to plinth level :1:4:8 (1 Cement : 4 coarse sand : 8 graded stone aggregate 40 mm nominal size)	2.00	cum		
4	Brick work with common burnt clay F.P.S. (non modular) bricks of class designation 7.5 in superstructure above plinth level up to floor V level in all shapes and sizes in :In cement mortar				
	Cement mortar 1:4(1 cement : 4 coarse sand	35.00	Cu.M		
5	12mm cement plaster on the rough side of single or half brick wall of mix : 1 : 4 (1 cement : 4 fine sand) for internal walls, column and beams etc	308	Sqm		

**RENOVATION OF OPD AT PRIMARY HEALTH CENTRES AT JAGATHY ,
THIRUVANANTHAPURAM DISTRICT, KERALA STATE**

No	Description	Qty	Unit	Rate	Amount
6	Providing and fixing aluminium work for doors, windows, ventilators and partitions with extruded built up standard tubular sections/ appropriate Z sections and other sections of approved make conforming to IS: 733 and IS: 1285, fixing with dash fasteners of required dia and size, including necessary filling up the gaps at junctions, i.e. at top, bottom and sides with required EPDM rubber/ neoprene gasket etc. Aluminium sections shall be smooth, rust free, straight, mitred and jointed mechanically wherever required including cleat angle, Aluminium snap beading for glazing / paneling, C.P. brass / stainless steel screws, all complete as per architectural drawings and the directions of Engineer-in-charge. (Glazing, paneling and dash fasteners to be paid for separately) :				
a).	For Fixed Portion , Powder coated aluminium (minimum thickness of powder coating 50 micron)	135.00	Kg		
b).	For shutters of doors, windows & ventilators including providing and fixing hinges/ pivots and making provision for fixing of fittings wherever required including the cost of EPDM rubber / neoprene gasket required (Fittings shall be paid for separately). Powder coated aluminium (minimum thickness of powder coating 50 micron)	62.00	Kg		
7	Providing and fixing 12 mm thick prelaminated particle board flat pressed three layer or graded wood particle board conforming to IS: 12823 Grade I Type II, in panelling fixed in aluminum doors, windows shutters and partition frames with C.P. brass / stainless steel screws etc. complete as per architectural drawings and directions of Engineer-in-charge. Providing and fixing 12 mm thick prelaminated particle board flat pressed three layer or graded wood particle board conforming to IS: 12823 Grade I Type II, in panelling fixed in aluminum doors, windows shutters and partition frames with C.P. brass /				
	Prelaminated particle board with decorative lamination on both sides	16.00	sqm		
8	Providing and fixing glazing in aluminium door, window, ventilator shutters and partitions etc with PVC/neoprene gasket etc. complete as per the architectural drawings and the directions of engineer-in-charge.				
a)	With float glass panes of 5.5 mm thickness	18.00	sqm		

**RENOVATION OF OPD AT PRIMARY HEALTH CENTRES AT JAGATHY ,
THIRUVANANTHAPURAM DISTRICT, KERALA STATE**

No	Description	Qty	Unit	Rate	Amount
9	Providing and fixing aluminium tower bolts ISI marked anodised (anodic coating not less than grade AC 10 as per IS: 1868) transparent or dyed to required colour or shade with nuts and screws etc. complete-				
a)	250 X 10 mm	1	each		
b).	150x10mm	1	each		
10	Providing and fixing 100mm brass locks (best make of approved quality) for aluminium doors including necessary cutting and making good etc. complete.	2	each		
11	Providing and fixing aluminium handles ISI marked anodised (anodic coating not less than grade AC 10 as per IS: 1868) transparent or dyed to required colour or shade with nuts and screws etc. complete-				
a)	125 mm	2	each		
12	Providing and fixing 18mm thick gang saw cut mirror polished premoulded and prepolished) machine cut for kitchen platforms, vanity counters, window sills , facias and similar locations of required size of approved shade, colour and texture laid over 20mm thick base cement mortar 1:4 (1 cement : 4 coarse sand) with joints treated with white cement, mixed with matching pigment, epoxy touch ups, including rubbing, curing, moulding and polishing to edges to give high gloss finish etc. complete at all levels. Granite of any colour and shade: Area of slab over 0.50 sqm.: Lowest retail price not less than Rs. 2000.00/m2(Granite to be selected by the Engineer in charge)	9.00	sqm		
13	Providing edge moulding to 18 mm thick marble/granite stone counters, Vanities etc., including machine polishing to edge to give high gloss finish etc. complete as per design approved by Engineer-in-Charge.	17.00	metre		
14	Providing and laying rectified Anti skid Glazed Ceramic floor tiles 300x300mm or more (thickness to be specified by the manufacturer) of 1 st quality conforming to IS : 15622 of approved make in colours white,Ivory, Grey, Fume, Red Brown, laid on 20mm thick cement mortar 1:4 (1 cement: 4 coarse sand)including grouting the joints with white cement and matching pigments etc.complete.	3.00	sqm		

**RENOVATION OF OPD AT PRIMARY HEALTH CENTRES AT JAGATHY ,
THIRUVANANTHAPURAM DISTRICT, KERALA STATE**

No	Description	Qty	Unit	Rate	Amount
15	Providing and fixing Ist quality ceramic glazed wall tiles conforming to IS:15622 (thickness to be specified by the manufacturer), of approved make, in all colours, shades except burgundy, bottle green, black of any size as approved by Engineer-in-Charge, in skirting, risers of steps and dados, over 12 mm thick bed of cement mortar 1:3 (1 cement : 3 coarse sand) and jointing with grey cement slurry @ 3.3kg per sqm, including pointing in white cement mixed with pigment of matching shade complete.	9.00	sqm		
16	Removing white or colour wash by scrapping and sand papering and preparing the surface smooth including necessary repairs to scratches etc. complete	350.00	sqm		
17	Applying one coat of water thinnable cement primer of approved brand and manufacture on wall surface, Water thinnable cement primer	350.00	sqm		
18	Providing and applying plaster of paris putty of 2 mm thickness over plastered surface to prepare the surface even and smooth complete	0.00	sqm		
19	Wall painting with acrylic emulsion paint of approved brand and manufacture to give an even shade – Two or more coats on new work.-internal walls	200.00	sqm		
20	Finishing walls with Acrylic Smooth exterior paint of required shade :	150.00	sqm		
21	Painting wood work with Deluxe Multi Surface Paint of required shade. Two or more coat applied @ 0.90 ltr/10 sqm over an under coat of primer applied @ 0.75 ltr/ 10 sqm of approved brand and manufacture	35.00	sqm		
22	Painting Steel work with Delux Multi surface paint to give an even shade. Two or more coat applied @ 0.90 ltr/10sqm over an over an under coat of primer applied @ 0.80ltr/10sqm of approved brand or manufacture.	63.50	sqm		

**RENOVATION OF OPD AT PRIMARY HEALTH CENTRES AT JAGATHY ,
THIRUVANANTHAPURAM DISTRICT, KERALA STATE**

No	Description	Qty	Unit	Rate	Amount
23	Providing and fixing factory made PVC door frame made of PVC extruded section having an overall dimensions as below (tolerance $\pm 1\text{mm}$), with wall thickness 2.0mm ($\pm 0.2\text{mm}$), corners of the door frame to be joined with galvanized brackets and stainless steel screws, joints mitered and plastic welded. The hinged side vertical of the frames reinforced by galvanized M.S. tube of size 19x19 mm and 1mm ($\pm 0.1\text{mm}$) wall thickness and 3 nos. Stainless steel hinged fixed to the frame complete as per manufacturers Specification and direction of engineering - in-charge : Extruded section profile size 48x40 mm	6.00	m		
24	Providing and fixing existing door frames: 24 mm thick factory made PVC door shutters made of styles and rails of a UPVC hollow section of size 59x24 mm and wall thickness 2 mm ($\pm 0.2\text{mm}$) with in built edging on both sides. The styles and rails mitered and joint at the corners by means of M.S. galvanized / plastic brackets of size 75x220 mm having wall thickness 1.0 mm and stainless steel screws. The styles of the shutter reinforced by inserting galvanized M.S. tube of size 20x20 mm and 1mm ($\pm 0.1\text{mm}$) wall thickness. The lock rail made up of " H" section, a UPVC hollow section of size 100x24 mm and 2mm ($\pm 0.2\text{mm}$) wall thickness, fixed to the shutters styles by means of plastic/ galvanized M.S.'U' cleats. The shutter frame filled with a UPVC multi chambered single panel of size not less than 620mm, having over all thickness of 20mm and 1mm ($\pm 0.1\text{mm}$) wall thickness. The panes filled vertically and tie bar at two places by inserting horizontally 6mm galvanized M.S. rod and fastened with nuts and washers, complete as per manufacturer's specification and direction of Engineer- in - charge. (for W,C and bath room door shutter).	2.00	m ²		
24	Structural steel work riveted, bolted or welded in built up sections, trusses and framed work, including cutting, hoisting, fixing in position and applying a priming coat of approved steel primer all complete.	2462.00	Kg		

**RENOVATION OF OPD AT PRIMARY HEALTH CENTRES AT JAGATHY ,
THIRUVANANTHAPURAM DISTRICT,KERALA STATE**

No	Description	Qty	Unit	Rate	Amount
25	Supply and Laying in cladding & Roofing COLOUR COATED sheet with guard flim made out of 0.5mm TCT 550MPa cold rolled sheet with hot dip metallic coating of Aluminium Zinc alloy 150gms/sq.m.The colour shall have a total coating thickness of 35 microns of an super Polyester colorbond XRW quality paint system or equivalent as per AS/NZS-2728:1997 (category 3), comprising of 20 microns exterior coat on top surface and 5 micron reverse coat on back surface over 5 micron primer coat on both surfaces and having 975/1000mm cover width with 26mm high crest at 195/200mm c/c in lengths as approved by Architect also to suit to site requirements and fixed with necessary suitable imported galvanized carbon steel self drilling and self tapping screws of BUILDEX or corroshield confirming to ASTM 3566-1990 (class- III) of required diameter and length as approved all complete with EPDM sealing washers, foam fillers wherever necessary, silicon sealent wherever necessary. The RAL Colour shall be 9006. No extra payable due to shade selection.	62.00	SQM		
26	Providing and laying factory made chamfered edge Cement Concrete paver blocks In foot path, park & lawns driveway or light & traffic parking etc. of required strength, thickness & size/ shape, made by table vibratory method using PU mould, laid in required colour & pattern over 50mm thick compacted bed of course sand, compacting and proper embedding/laying of inter locking paver blocks into the sand bedding layer through vibratory compaction by using plate vibrator, filling the joints with sand and cutting of paver blocks as per required size and pattern, finishing and sweeping extra sand, all complete as per manufacturer's specifications & direction of Engineerin- Charge.60mm thick Cement concrete paver block of M-35 grade with approved colour, design & pattern.	18.00	Sqm		
	Plumbing works				
27	Providing and fixing gun metal gate valve with C.I. wheel of approved quality -25MM	1	sqm		

**RENOVATION OF OPD AT PRIMARY HEALTH CENTRES AT JAGATHY ,
THIRUVANANTHAPURAM DISTRICT,KERALA STATE**

No	Description	Qty	Unit	Rate	Amount
28	Providing and fixing C.P. brass angle valve for basin mixer and geyserpoints of approved quality conforming to IS:8931 a) 15 mm nominal bore: 15 mm nominal bore.Make:Hindware,Cera,Jaquar etc..	1	Nos.		
29	Providing and fixing trap of self cleansing design with screwed down orhinged grating with or without vent arm complete, including cost of cuttingand making good the walls and floors :100 mm inlet and 100 mm outlet	1	Nos		
30	Providing and fixing white vitreous china pedestal type water closet(European type W.C. pan) with seat and lid, 10 litre low level white P.V.C.flushing cistern, including flush pipe, with manually controlled device(handle lever), conforming to IS : 7231, with all fittings and fixturescomplete, including cutting and making good the walls and floors wherever required :W.C. pan with ISI marked white solid plastic seat and lid	1	Nos		
31	Providing and fixing wash basin with C.I. brackets, 15 mm C.P. brasspillar taps, 32 mm C.P. brass waste of standard pattern, including paintingof fittings and brackets, cutting and making good the walls whereverrequire:White Vitreous China Wash basin size 630x450 mm with apair of 15 mm C.P. brass pillar taps	1	Nos		
32	Providing and fixing Chlorinated Polyvinyl Chloride (CPVC) pipes, having thermal stability for hot & cold water supply including all CPVC plain & brass threaded fittings i/c fixing the pipe with clamps at 1.00 m spacing. This includes jointing of pipes & fittings with one step CPVC solvent cement and the cost of cutting chases and making good the same including testing of joints complete as per direction of Engineer in Charge.Concealed work including cutting chases and making good the walls etc				
a)	20 mm nominal outer dia .Pipes	10	metre		
b)	32 mm nominal outer dia Pipes		metre		
c)	50 mm nominal outer dia Pipes	10	metre		

**RENOVATION OF OPD AT PRIMARY HEALTH CENTRES AT JAGATHY ,
THIRUVANANTHAPURAM DISTRICT, KERALA STATE**

No	Description	Qty	Unit	Rate	Amount
32	Providing and fixing Stainless Steel A ISI 304 (18/8) kitchen sink as per IS: 13983 with C.I. brackets and stainless steel plug 40 mm, including painting of fittings and brackets, cutting and making good the walls wherever required :: (Lowest retail price of sink not less than Rs. 3150)				
	Kitchen sink without drain board, Size - 610x510 mm bowl depth 200 mm		each		
33	Providing and fixing PVC Waste pipe for sink or wash basin including PVC waste fittings complete. : Semi rigid pipe 32mm dia		Nos.		
34	Providing and fixing 600x450 mm beveled edge mirror of superior glass (of approved quality) complete with 6 mm thick hard board ground fixed to wooden cleats with C.P. brass screws and washers complete.	1	each		
35	Providing and fixing PTMT towel rail complete with brackets fixed to wooden cleats with CP brass screws with concealed fitting arrangement of approved quality and colour. 600mm long towel rail with total length of 645mm, width 78mm and effective height of 88mm, weighing not less than 190gms.	1	each		
36	Providing and fixing PTMT liquid soap container 109mm wide, 125mm high and 112mm distance from wall of standard shape with bracket of the same materials with snap fittings of approved quality and colour. weighing not less than 105 gms.	1	each		
37	Supply and fix 50 mm thk sandwich panel of approved colour with 4 mm galvalume sheet on top 3mm galvalume sheet on top with puff density 40 kg/cm ²	58.5	sqm		
37	Supplying and providing poly carbonate roofing sheet standard type material, including cost of all fixtures labour and material complete	0	sqm		
38	Supplying and providing auto closer for aluminium doors Fully controlled closing with adjustable speed between 180° - 20° , good quality material like brand- Dorma or equalent , Capacity of material should be according to door size, and the directions of Engineer-in-charge	1	each		
39	Providing & fixing of CP Health faucet. Hand operated spray unit (instand type)	1	Set		

**RENOVATION OF OPD AT PRIMARY HEALTH CENTRES AT JAGATHY ,
THIRUVANANTHAPURAM DISTRICT, KERALA STATE**

No	Description	Qty	Unit	Rate	Amount
40	Providing and fixing PVC pipes for water supply arrangements including cost pipes, fittings, solvent cement, testing of pipes, labour charges etc complete : Concealed work including cutting chases and making good the wall etc				
a)	20mm dia. PVC pipe	25	Mtr.		
b)	25mm dia. PVC pipe		Mtr.		
c)	32mm dia. PVC pipe	25	Mtr.		
41	Providing and fixing CP grating of 6mm thick with rim including setting in floor with white cement mortar and making good the floor				
a)	125mm dia	1	Nos.		
42	Providing and fixing PVC soil, waste and vent pipe to IS : 13592 of SWR quality including all fittings, like : Bends, Tees, Elbows, Collars, junction, inspection doors, cowls, offsets, access pipes, jointing with rubber ring / solvent cement by application of leak proof adhesive like FRP paste including cutting holes in walls and floors and making good. Make: Supreme, Finolex, Prince etc.,				
a)	50mm dia	20	Mtr.		
b)	110mm dia	20	Mtr.		
	Total Civil works				

**RENOVATION OF OPD AT PRIMARY HEALTH CENTRES AT JAGATHY ,
THIRUVANANTHAPURAM DISTRICT, KERALA STATE**

No	Description	Qty	Unit	Rate	Amount
ELECTRICAL WORKS					
1	Point wiring in PVC conduit with modular type switch.				
	Wiring for light point/fan point/exhaust fan point /call bell point with 1.5 sq mm FR PVC insulated copper conductor single core cable in surface/recessed medium class PVC conduit, with modular switch, modular plate, suitable PVC box and earthing the point with 1.5 sq.mm FR PVC insulated copper conductor single core cable etc as				
	Group C	0	Point		
2	Wiring through PVC conduit				
	Wiring for circuit/submain wiring along with earth wire with the following sizes of FR PVC insulated copper conductor, single core cable in surface/recessed medium class PVC conduit as required.(Make:Havells/Finolex/V-guard/Polycab)				
a	2X1.5 sq.mm + 1X1.5 sq.mm earth wire	35	Metre		
b	2X2.5 sq.mm + 1 X2.5 sq mm earth wire	90	Metre		
c	2X4 sq.mm + 1X4 sq.mm earth wire	0	Metre		
2.1	Telephone wiring in existing conduit:				
	Supplying and drawing following pair 0.5 sq mm FR PVC insulated annealed copper conductor, unarmored telephone cable in the existing surface/ recessed steel/ PVC conduit as required.				
a	2 Pair	0	Metre		
3	A/C point				
	S/F 20A SPN MCB industrial socket outlet: Supplying and fixing 20 amps, 240 volts, SPN industrial type, socket outlet, with 2 pole and earth, metal enclosed plug top alongwith 20 amps "C" curve, SP, MCB, in sheet steel enclosure, on surface or in recess, with chained metal cover for the socket out let and complete with connections, testing and commissioning etc. as required.(Make: Legrand/Havells/HPL)	0	Point		
4	Modular type blanking plate:				
	Supplying and fixing modular blanking plate on the existing modular plate & switch box excluding modular plate as required.(Make: Legrand/Havells/HPL)	1	Each		

**RENOVATION OF OPD AT PRIMARY HEALTH CENTRES AT JAGATHY ,
THIRUVANANTHAPURAM DISTRICT, KERALA STATE**

No	Description	Qty	Unit	Rate	Amount
5	Modular boxes, bases & cover plate:				
	Supplying and fixing following size/modules, GI box along with modular base & cover plate for modular switches in recess etc as required.(Make:				
a	3 module	5	Each		
b	6 module	6	Each		
6	Modular type switch/socket:				
	Supplying and fixing following modular switch/socket on the existing modular plate & switch box including connections but excluding modular plate etc as required. (Make: Legrand/Havells/HPL)				
a	5/6 Amps switch	16	Each		
b	3 pin 5/6 Amp socket outlet	16	Each		
c	15/16 Amps switch	2	Each		
d	6pin 15/16 Amps (universal) socket outlet	2	Each		
e	Telephone socket outlet	0	Each		
7	S/F PVC conduit:				
	Supplying and fixing of following sizes of medium class PVC conduit along with accessories in surface/recess including cutting the wall and making good the same in case of recessed conduit as required.(ISI Make)				
a	25 mm	75	Metre		
8	ITC Fluorescent fitting directly on surface: Installation, testing and commissioning of pre-wired, fluorescent fitting / compact fluorescent fitting/LED of all types, complete with all accessories and tube etc. directly on ceiling/ wall, including connection with 1.5 sq. mm FR PVC insulated, copper conductor, single core cable and earthing etc. as required.	0	Each		
9	ITC Ceiling fan: Installation, testing and commissioning of ceiling fan, including wiring the down rods of standard length (upto 30 cm) with 1.5 sq. mm FR PVC insulated, copper conductor, single core cable etc. as required.	0	Each		

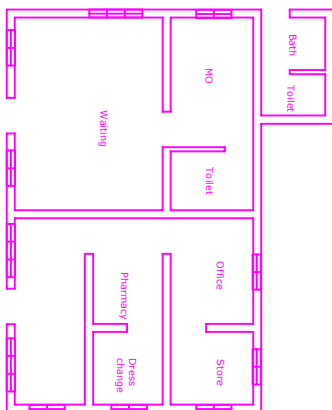
**RENOVATION OF OPD AT PRIMARY HEALTH CENTRES AT JAGATHY ,
THIRUVANANTHAPURAM DISTRICT, KERALA STATE**

No	Description	Qty	Unit	Rate	Amount
10	Supplying and fixing two module stepped type electronic fan regulator on the existing modular plate switch box including connections but excluding modular plate etc. as required.	8	Each		
11	CABLE SUPPLY, LAYING AND TERMINATION				
	Wiring for circuit/ submain wiring along with earth wire with the following sizes of FR PVC insulated copper conductor, single core cable in surface/ recessed medium				
a	From Main to DB				
	2 X 4 sq. mm + 1 X 4 sq. mm earth wire	25	Metre		
12	Supply of 15W LED tube fitting sleek with decorative end cap, powder coated CRCA steel channel complete with all electrical accessories like electronic ballast, lamp holder, 28W LED lamp etc complete as required. (Philips / Wipro /HAVELLS)	0	Each		
12.1	Supply and installation of 18 W CFL with its all accessories.[ISI MAKE]	0	Each		
13	Supply and installation of 1200 mm sweep Ceiling fan, white colour, 5 star rated as per BEE complete with blades, down rod, shackle, canopy etc(Make Havells/bajaj/usha/V-guard/crompton)	8	Each		
13.1	Supply and installation of wall fan, white colour, 5 star rated as per BEE complete with its all accessories(Make Havells/bajaj/usha/V-guard)	0	Each		
14	S/F SP & N DB:				
	Supplying and fixing following way prewired SP&N MCB, distribution board of steel sheet for 240 volts on surface/recess complete with loose wire box, terminal connectors for all incoming and outgoing circuits, duly prewired with suitable size FR PVC insulated copper conductor up to terminal blocks, tinned copper bus bar, neutral link, earth bar, detachable gland plate, interconnections, powder painted including earthing etc.as required(But without MCB/RCCB/Isolator) (Make: Legrand/Havells/HPL)				

**RENOVATION OF OPD AT PRIMARY HEALTH CENTRES AT JAGATHY ,
THIRUVANANTHAPURAM DISTRICT,KERALA STATE**

No	Description	Qty	Unit	Rate	Amount
	8 way SPN, double door	1	Each		
	8 way SPN, double door	1	Each		
14.1	S/F of DP ISOLATOR				
	Supplying and fixing following rating, double pole, (single phase and neutral), 240 volts, ISOLATOR having a sensitivity current upto 100 to 300 milliamperes in the existing MCB DB complete with connections, testing and commissioning etc, as required.(Make: Legrand/Havells/HPL)				
	40 A, DP isolator	2	Each		
14.2	S/F of SP MCB				
	Supplying and fixing 6 amps to 10 amps rating, 240 Volts, "C" series, miniature circuit breaker suitable for lighting and other loads of following poles in the existing MCB DB complete with connections, testing and commissioning etc as required.(Make: Legrand/Havells/HPL)				
	6/10A SP MCB	12	Each		
15	Miscellaneous Items				
15.1	Miscellaneous electrical work, removing of existing conduits and interconnections of light,6A socket/16A socket/A/C point from existing DB	0	LS		
15.2	Supply and pointing exhaust fan shutter type white colour-9"/10"(Make Havells/Bajaj/Almonard)	0	Each		
16	Miscellaneous work for removing & supply of old 3 nos of 5A switch & 5A sockets and 2-bulb, 1-CFL with its all accessories only as per the direction of engineer in charge.[ISI MAKE]	0	LS		
	Total Electrical works				
	Grand TOTAL				
	TAXES				
	GRAND TOTAL (INCLUSIVE OF TAXES)				
	I agree to complete the work as per the schedule at the rates quoted by me as above.				
			BIDDER		
	* RO -Rate Only				
	LS-Lump Sum				

PHC JAGATHY



SUBMISSION DRAWING

REF	DESCRIPTION	DATE	SIGN
R E V I S I O N S			

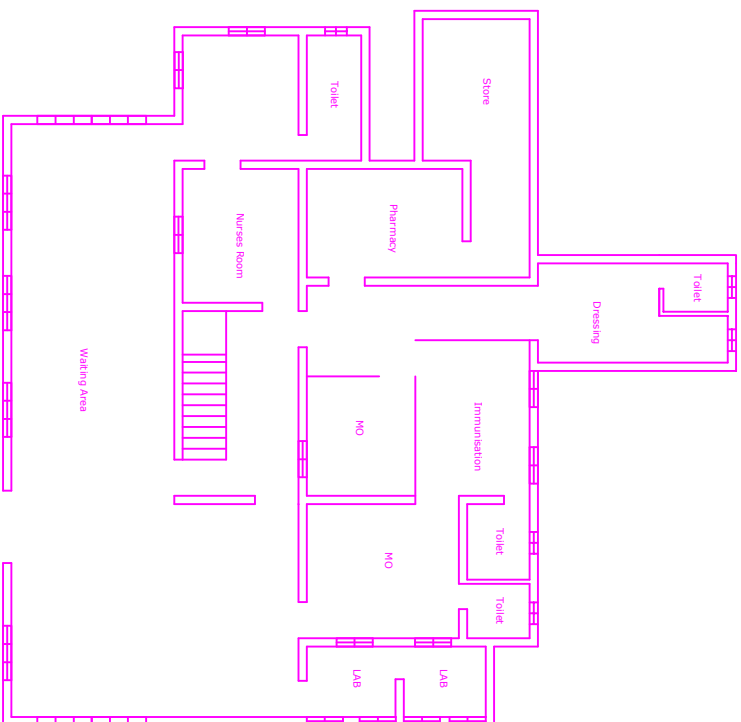
PRIMARY HEALTH CENTER
AT JAGATHY, TRIVANDRUM, KERALA
EXISTING PHC DRAWING
AARDRAM PROJECT


H L L LIFE CARE LTD.
(A Government of India Enterprise)

DRAWN	Blumen	JOB NO	DATE	13.07.2017
CHECKED		275	SCALE	1 : 100
DWG/NO	HLL-KL-ELD-BSR-DR-1			

DIMENSION: MM

PHC VATTIYOORKAVU




DIMENSION: MM

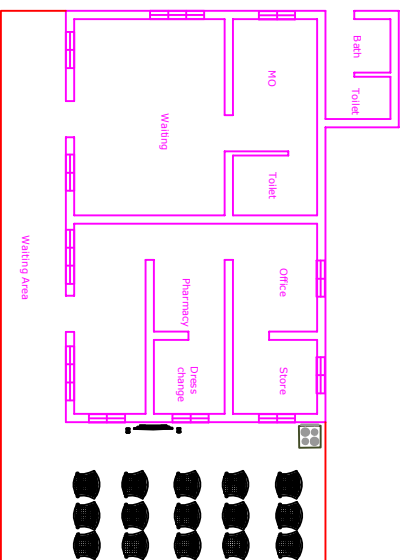
SUBMISSION DRAWING

REF	DESCRIPTION	DATE	SIGN
REVISIONS			

PRIMARY HEALTH CENTER
AT VATTIYOORKAVU, TRIVANDRUM, KERALA
EXISTING PHC DRAWING
AARDRAM PROJECT

 H L L LIFE CARE LTD. (A Government of India Enterprise)			
DRAWN	Bhuvan	JOB NO	DATE
CHECKED		275	SCALE
DWG NO	HLL-KL-ELD-BSR-DR-1		1: 100

PHC JAGATHY



SUBMISSION DRAWING

REF.	DESCRIPTION	DATE	SIGN
R E V I S I O N S			

PRIMARY HEALTH CENTER
AT JAGATHY, TRIVANDRUM, KERALA

PROPOSED PHC DRAWING

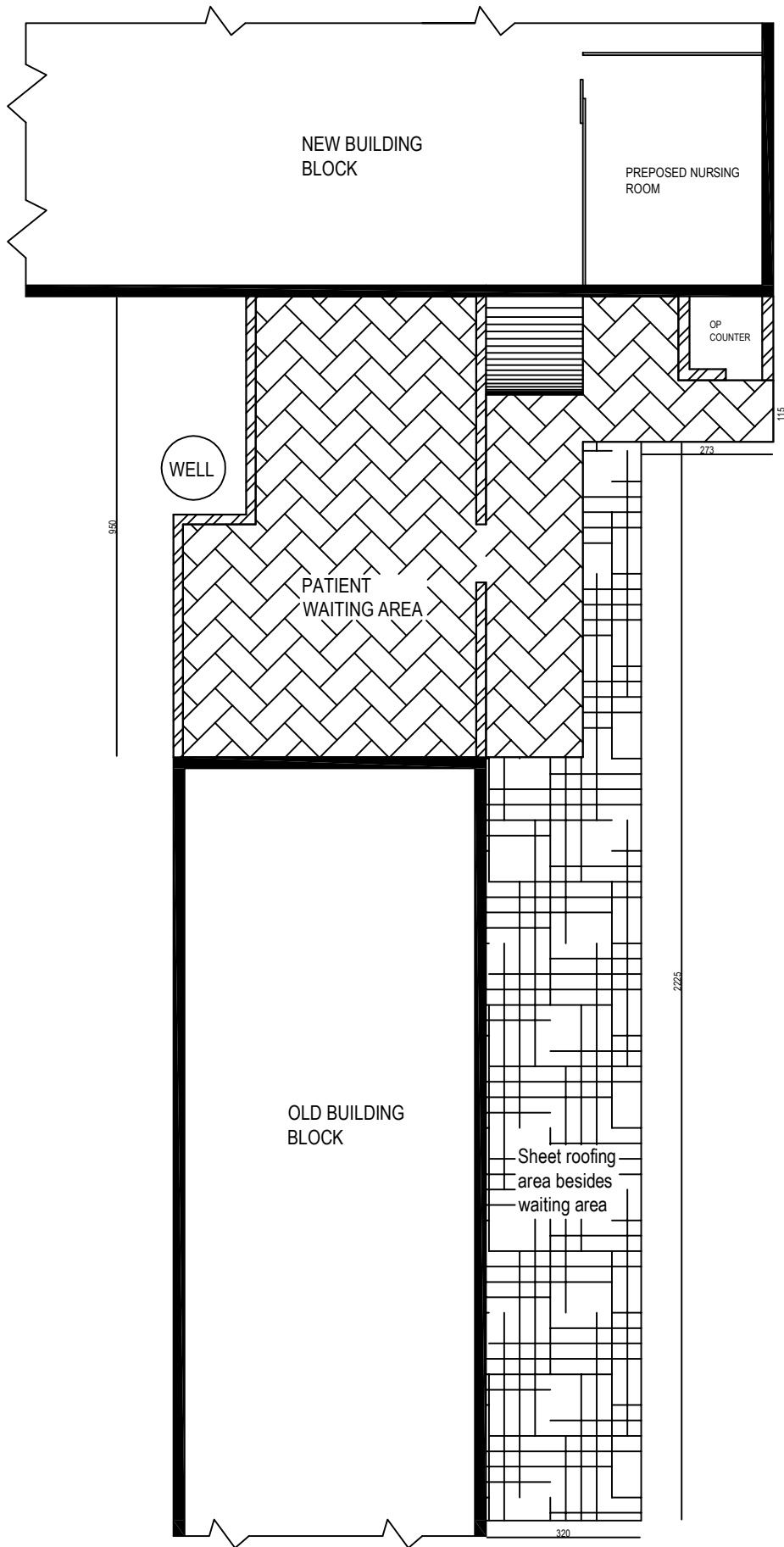
AARDRAM PROJECT



H L L LIFE CARE LTD.
(A Government of India Enterprise)

DRAWN	Job No	DATE	SCALE
Ithovan		13.07.2017	1 : 100
CHECKED	280		
DWG NO	HLL-KL-ELDHSR-DK-1		

DIMENSION: MM



WELL

NEW BUILDING BLOCK

PREPOSED NURSING ROOM

OP COUNTER

PATIENT WAITING AREA

OLD BUILDING BLOCK

Sheet roofing area besides waiting area

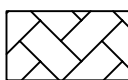
630

113

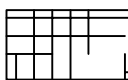
273

225

320



- Interlocking area with sheet roofing



- Additional sheet roofing area