

IFB NO. HLL/CHO-PROJ/KL-HCD/CIV&ELE/AYUSH/2018-19/04, DT. 16.08.2018

## **HLL LIFECARE LIMITED**

(A GOVT. OF INDIA ENTERPRISE)  
Corporate and Registered Office:

### **TENDER FOR UPGRADATION OF GOVT. AYURVEDA DISPENSARY, KUNNATHUKAL, THIRUVANATHAPURAM, KERALA STATE (CIVIL AND ELECTRICAL WORKS ON TURNKEY BASIS)**

**IFB NO. HLL/CHO-PROJ/KL-HCD/CIV&ELE/AYUSH/2018-19/04, DT.  
16.08.2018**



HLL Bhavan, Poojappura,  
Thiruvananthapuram – 695012, Kerala, India  
Phone +91 471 2354949 / 2350961/2350959  
Mail: [choprojects@lifecarehll.com](mailto:choprojects@lifecarehll.com)  
Web: [www.lifecarehll.com](http://www.lifecarehll.com)

## ABSTRACT

<b>SECTION No.</b>	<b>DESCRIPTION</b>	<b>PAGE No.</b>
<b><u>PART A</u></b>		
SECTION I	INVITATION FOR BIDS (IFB)	03
SECTION II	INSTRUCTION TO BIDDERS (ITB)	05
SECTION III	GENERAL CONDITIONS OF CONTRACT (GCC)	15
SECTION IV	SPECIAL CONDITIONS OF CONTRACT (SCC)	22
SECTION V	QUALIFICATION CRITERIA	25
SECTION VI	PROFORMA ABOUT THE CONTRACTOR	26
SECTION VII	PERFORMANCE STATEMENT	27
SECTION VIII	INDEMNITY CLAUSE	28
SECTION IX	DECLARATION	29
<b><u>PART : B</u></b>		
SECTION X	ABSTRACT PRICE SCHEDULE	31
SECTION XI	PRICE SCHEDULE (I)	32

**PART – A**

**SECTION I**

**INVITATION FOR BIDS (IFB)**

Sealed and super scribed tenders, under Single Bid system, is invited from the eligible contractors, for Upgradation of Govt. Ayurveda Dispensary, Kunnathukal, Thiruvananthapuram, Kerala state, The detailed work is given as in the **Price Schedule** to this Tender.

<b>Sl. No</b>	<b>Details of Site</b>	<b>EMD Amount In Rs</b>
1	Govt. Ayurveda Dispensary, Kunnathukal	Rs.30,000

2. The bid documents will be available up to 15.00 Hrs. on the previous working day of the opening of the bids. The scheduled date for issue, receipt and opening of bids is as follows.

- a) Date of issue of tender document - 16.08.2018 onwards
- b) Last date and time for receipt of bids - 04.09.2018 up to 15.00 Hrs.
- c) Date and time of opening of bids - 04.09.2018, 15.30 Hrs.
- d) Address for communication, receipt and place of opening of bids:

**SENIOR MANAGER (PROJECTS),**  
PROJECTS DIVISION,  
HLL LIFECARE LIMITED (A Government of India Enterprise)  
Corporate Head Office, Poojappura.P.O,  
Thiruvananthapuram – 695012, Kerala, India Phn: 0471- 2354949, 2775588  
E-mail: [choprojects@lifecarehll.com](mailto:choprojects@lifecarehll.com)

3. The completed and sealed bid documents should be submitted to Associate Vice President (Projects), in the above address along with the EMD. The outer cover should bear the Enquiry No, closing date and General description of item tendered, and the words “DO NOT OPEN BEFORE” 15.30 Hrs (IST) on ----- (Indicate the Closing Date). EMD shall be submitted in the form of demand draft drawn from a nationalized bank in favor of HLL Lifecare Limited payable at Thiruvananthapuram. Bids received after due date and time will be rejected. Any bid not accompanied by EMD will be rejected.
4. Bids will be opened in the presence of Bidders representative(s) who choose to attend on the specified date and time, at the office of HLL at the address given in Clause 2 (d) above.

**IFB NO. HLL/CHO-PROJ/KL-HCD/CIV&ELE/AYUSH/2018-19/04, DT. 16.08.2018**

5. In the event of the date specified for bid receipt and opening being declared as a closed holiday for the above purchaser's office, the due date for submission of bids and opening of bids will be the following working day at the appointed times.
6. HLL may, at its discretion, extend this deadline for submission of bids by amending the Bid Documents or any other reasons, in which case all rights and obligations of HLL and Bidders previously subject to the deadline will thereafter be subject to the deadline as extended.
7. HLL will not be held responsible for the postal delay, if any, in the delivery of the bidding document or the non-receipt of the same. Bids sent by Telex/Fax/Telegraph will not be accepted.
8. The EMD should be enclosed in a separate envelope and super scribed as "EMD" and to be attached in the main cover.
9. SSI/MSME units interested in availing exemption from payment of EMD should submit a valid copy of their registration certificate issued by the concerned DIC or NSIC / Udyog Aadhaar. But the Party has to provide Security deposit if Tender is awarded to them.

Note: If the bidder is a MSME, it shall declare in the bid document the Udyog Aadhar Memorandum Number issued to it under the MSMED Act, 2006. If a MSME bidder do not furnish the UAM Number along with bid documents, such MSME unit will not be eligible for the benefits available under Public Procurement Policy for MSEs Order 2012..

10. The company reserves the right to club or split the items of works, change the qualifying criteria at their discretion and to reject or cancel the Invitation for bids without assigning any reason thereof.

**SENIOR MANAGER (PROJECTS)**

**SECTION II**

**INSTRUCTION TO BIDDERS**

**A.INTRODUCTION**

**1. Eligible Bidders**

1.1 Only experienced contractors are eligible to participate in the tender.

The tenderer shall furnish, as part of its tender, relevant details and documents establishing its eligibility to quote and its qualifications to perform the contract if its tender is accepted.

1.2 The documentary evidence needed to establish the tenderer's qualifications shall fulfill the following requirements:

a) The tenderer has the required financial, technical and service capability necessary to perform the contract and, further, it meets the qualification criteria incorporated in the Section V in these documents.

1.3 The bidder should have **Minimum 1 year experience in the relevant field in SECTION V – Qualification Criteria**

1.4 Bidder submit annual turnover statement for last financial year not less than at least 10 lakhs, certified by Chartered Accountant.

1.5 Deleted.

**2. Cost of Bidding**

2.1 Cost of bidding shall be completely on the tenderer.

## **B. THE BIDDING DOCUMENTS**

### **3. Contents of Bidding Documents**

3.1 The work required, bidding procedures and contract terms are prescribed in the Bidding documents. In addition to the Invitation for Bids, the Bidding documents include:

- a. Instruction to Bidders (ITB);
- b. General Conditions of Contract (GCC);
- c. Special Conditions of Contract (SCC);
- d. Qualification criteria;
- e. Proforma about the Contractor
- f. Performance statement
- g. Indemnity Clause
- h. Declaration
- i. Abstract Price Schedule
- j. Price Schedules

3.2 The Bidder is expected to examine all instructions, forms, terms and specifications in the Bidding Documents. Failure to furnish all information required by the Bidding Documents or submission of a bid not substantially responsive to the Bidding Documents in every respect will be at the Bidder's risk and may result in rejection of its bid.

### **4. Clarification of Bidding Documents**

4.1 The Bidder, who require any clarification of the Bidding Documents may notify the Company in writing at the Company's mailing address indicated in the Invitation for Bids. The Company will respond in writing to any such request which is received not later than **3 days** prior to the deadline for submission of bids prescribed by the Company. Any such response (relevant) against the clarification of the tenderer shall be notified in our website only.

### **5. Amendment of Bidding Documents**

5.1 At any time prior to the deadline for submission of bids, the Company may, for any reason, whether at its own initiative or in response to a clarification requested by a prospective bidder, modify the Bidding Documents by an amendment.

Those bidders who download the tender documents from our website should furnish

the Name and address of the vendor, name of contact person, telephone and Email details immediately by Email to [choprojects@lifecarehll.com](mailto:choprojects@lifecarehll.com). Any changes pertains to this tender shall be communicated only through our website [www.lifecarehll.com](http://www.lifecarehll.com)

- 5.2 All prospective bidders who have received the Bidding Documents will be notified of the amendment in writing or by cable and will be binding on them.
- 5.3 In order to allow prospective bidders reasonable time in which to take the amendment into account in preparing their bid, the Company may, at its discretion, extend the deadline for the submission of bids

## **C. PREPARATION OF BIDS**

### **6. Language of Bid**

- 6.1 The Bid prepared by the bidder and all correspondence and documents relating to the bid exchanged by the Bidder and the Company, shall be written in the English language. Supporting documents and printed literature furnished by the Bidder may be written in another language provided they are accompanied by an accurate translation of the relevant passages in the English language in which case, for purposes of interpretation of the Bid, the English translation shall govern.

### **7. Documents Comprising the Bid**

Following documents and forms are to be included in the bid respectively.

#### **7.1 TECHNICAL DOCUMENTS**

The technical bid shall consist of the following documents.

- a) **EMD shall be submitted in the form of Demand Draft from schedule Bank, drawn in favor of HLL Lifecare Limited, payable at Thiruvananthapuram.** The EMD/Bid Security shall be refunded to the non-responsive bidders within 60 days from the date of opening of Bid. The Tender received without EMD will be rejected.
- b) SSI/MSME units interested in availing exemption from payment of Tender Fee & EMD should submit a valid copy of their registration certificate issued by the concerned DIC or NSIC / **Udyog Aadhaar**. But the Party has to provide Security deposit if Tender is awarded to them.

- c) Copy of Balance sheet / Bank Statement for the last financial year.
- d) Performance statement in the Proforma VII.
- e) Documentary evidence established in accordance with ITB Clause A1 that the Bidder is eligible to bid and is qualified to perform the contract if its bid is accepted;

## **7.2 PRICE SCHEDULE**

Duly filled Bid Form i.e. Price Schedule Abstract and Price Schedule.

## **7.3 DISTRIBUTION OF WORK IN CASE OF AWARDING WORK TO MORE THAN ONE TENDERER:-**

- i. The Company has the right to give the work under this tender to one or more contractors, for any number of site or partially or fully, at Company's own discretion.
- ii. The company reserves the right to distribute the work, site wise, at its discretion to different Tenderers who agree to do the work at the lowest rate accepted. However, the company is not bound to accept the lowest rate quoted by L1 bidder for all works tendered.
- iii. It is specifically made clear that the company reserves right to place the order for the other competent bidders (other than L1 bidder), subject to matching L1 rates.
- iv. Company has chosen to place work Orders with the Matched lowest contractor and when there are more than one such Matched lowest contractor, then the work Orders for the requirement of works will be placed among them at the discretion of the company to get the works executed within the limited time period.
- v. The Matched lowest contractor, on placement of work Order, will be deemed as lowest rate contractor for the purpose of the tender and all provisions of the tender documents applicable to L1 rate tenderer will apply mutatis mutandis to the Matched L1 contractor also.
- vi. If the lowest contractor has failed to execute the required works within the stipulated time, Company will cancel such work orders and on cancellation, Company will place work Orders with the alternate contractor(s) at the risk and cost of the defaulted contractor.



- vii. If the contractor fails to execute the work(s) for any of the Work Orders placed for the similar work(s), at any point of time, either fully or partly, within the stipulated time, Company is at liberty to place work Orders either with other Tenderers ( in ascending order, viz., L2,L3 and so on) at the rates offered by them or with alternate sources and in such cases the defaulted contractor is liable to indemnify Company, WITH OUT ANY PROTEST OR DEMUR, for the difference in cost incurred by Company and the Company is entitled to recover the difference in cost from any amount due/payable to the defaulted supplier.

## 8. Bid Currencies

8.1 Prices shall be quoted in Indian Rupees.

## 9. Documents establishing bidder's eligibility and qualifications

- 9.1 Pursuant to ITB Clause 1, the bidder shall furnish, as part of its bid, documents establishing the bidder's eligibility to bid and its qualifications to perform the Contract.
- 9.2 The documentary evidence of the Bidder's qualifications to perform the Contract if its bid is accepted, shall establish to the Company's satisfactions.

- (a) that the bidder has the financial and technical capability necessary to perform the Contract and meets the criteria outlined in the qualification requirements specified in Section V. All bids submitted shall include the following information:

Details of experience and past performance of the bidder on items offered and on those of similar nature and details of current contracts in hand and other commitments as per proforma given in Section VII

## 10. Scope of Documents:

- 10.1 For the purpose of the documentary evidence to be furnished pursuant to ITB Clause 9.2 above, the Bidder shall note that the standards for workmanship, material and references to brand names or catalogue numbers, if any, designated by the Company in its Tender schedules are intended to be descriptive only and not restrictive.

## 11. Period of Validity of Bids

- 11.1 Price shall be valid **for One year from the date of opening.**
- 11.2 In exceptional circumstances, the Company may solicit the bidders consent to an extension of the period of validity. The request and the responses thereto shall be made in writing.

**12. Format and Signing of Bid.**

- 12.1 The bidder shall prepare the bid clearly marking as appropriate
- 12.2 The bid shall be typed or written in indelible ink and shall be signed by the Bidder or a person or persons duly authorized to bind the Bidder to the Contract. The letter of authorization shall be indicated by written power-of-attorney accompanying the bid. All pages of the bid, except for printed literature, shall be initialed by the person(s) signing the bid.
- 12.3 Any interlineations, erasures or overwriting shall be valid only if they are initialed by the person or person(s) signing the bid.

**D. SUBMISSION OF BIDS**

**13. Sealing and Marking of bids**

- 13.1 The bidders shall seal the **Technical bid** and **Price bid** in a single cover, duly written on the envelope as

**“TENDER FOR UPGRADATION OF GOVT. AYURVEDA DISPENSARY, KUNNATHUKAL,  
THIRUVANATHAPURAM, KERALA STATE”**

**“HLL/CHO-PROJ/KL-HCD/CIV&ELE/AYUSH/2018-19/04, DT. 16.08.2018”**

**“DO NOT OPEN BEFORE 15.30 Hrs. on 04.09.2018”**

- 13.2 The envelope shall be addressed to the following address:

**SENIOR MANAGER (PROJECTS),  
PROJECTS DIVISION,  
HLL LIFECARE LIMITED (A Government of India Enterprise)  
Corporate Head Office, Poojappura.P.O,  
Thiruvananthapuram – 695012, Kerala, India  
Phn: 0471- 2354949, 2775588  
E-mail: [choprojects@lifecarehll.com](mailto:choprojects@lifecarehll.com)**

- (a) If the envelope is not sealed and marked as required, the Company will assume no responsibility for the bid's misplacement or premature opening.
- (b) Bids must be received by the Company at the address specified not later than the date and time specified in the Invitation for Bid. In the event of the specified date for the submission of bids, being declared a holiday for the Company, the bids will be received up to the appointed time on the next working day.
- (c) The Company may, at its discretion, extend this deadline for the submission of bids by amending the bidding documents in which case all rights and obligations of the Company and bidders previously subject to the deadline will thereafter be subject to the deadline as extended.

#### **14. LATE BIDS**

- 14.1 Any bid received by the Company after the deadline for submission of bids prescribed by the Company, will be rejected and returned unopened to the bidder.

#### **15. MODIFICATION AND WITHDRAWAL OF BIDS**

- 15.1 The bidder may modify or withdraw its bid after the bid submission, provided that written notice of the modification or withdrawal is received by the Company prior to the deadline prescribed for submission of bids.
- 15.2 The bidder's modification or withdrawal notice shall be prepared, sealed, marked and dispatched in accordance with the provisions of ITB Clause 15. A withdrawal notice may also be sent by cable, but followed by a signed confirmation copy, post-marked not later than the deadline for submission of bids.
- 15.3 No bid may be modified subsequent to the deadline for submission of bids.
- 15.4 No bid may be withdrawn in the interval between the deadline for submission of bids and the expiration of the period of bid validity specified by the bidder in the Bid Document.

## **E. BID OPENING AND EVALUATION**

### **16. Opening of Bids by Company**

16.1 The Company will open all bids, in the presence of bidder's representatives who choose to attend, at 15.30 Hrs on 04.09.2018 at the following Office

**SENIOR MANAGER (PROJECTS),**  
PROJECTS DIVISION,  
HLL LIFECARE LIMITED (A Government of India Enterprise)  
Corporate Head Office, Poojappura.P.O,  
Thiruvananthapuram – 695012, Kerala, India  
Phn: 0471- 2354949, 2775588  
E-mail: [choprojects@lifecarehll.com](mailto:choprojects@lifecarehll.com)

16.2 In the event of the specified date of bid opening being declared a holiday for the Company, the bids shall be opened at the appointed time and location on the next working day.

16.3 The bidder's names, modifications, bid withdrawals and the presence or absence of the requisite documents and such other details as the Company, at its discretion, may consider appropriate will be announced at the opening. No bid shall be rejected at bid opening, except for late bids, which shall be returned unopened to the bidder.

16.5 The Company will scrutinize the technical bid for compliance to the conditions and documentation requirement as per the bid document. The bidders will be short-listed on the basis of responsiveness of technical bid & Price bid. The short listed bidders will be informed about the time, date and venue of the price bid opening.

### **17. CLARIFICATION OF BIDS**

17.1 During evaluation of bids, the Company may, at its discretion, ask the bidder for a clarification of its bid. The request for clarification and the response shall be in writing and no change in prices or substance of the bid shall be sought, offered or permitted.

### **18 PRELIMINARY EXAMINATION**

18.1 The Company will examine the bids to determine whether they are complete, whether any computational errors have been made, whether the documents have been properly signed, and whether the bids are generally in order.

- 18.2 Arithmetical errors will be rectified on the following basis. If there is a discrepancy between the unit price and the total price that is obtained by multiplying the unit price and quantity, the unit price shall prevail and the total price shall be corrected. If there is a discrepancy between words and figures, the amount in words will prevail. If the bidder does not accept the correction of the errors, its bid will be rejected.
- 18.3 The Company may waive any minor informality or non-conformity or irregularity in a bid, which does not constitute a material deviation, provided such a waiver does not prejudice or affect the relative ranking of any bidder.
- 18.4 Prior to the detailed evaluation, pursuant to Clause ITB 21, the Company will determine the substantial responsiveness of each bid to the bidding documents. For purposes of these clauses a substantially responsive bid is one which conforms to all the terms and conditions of the bidding documents without material deviations. Deviations from or objections or reservations to critical provisions such as those concerning Warranty, Force Majeure, Applicable law and Taxes and Duties will be deemed to be material deviation. The Company's determination of a bid's responsiveness is to be based on the contents of the bid itself without recourse to extrinsic evidence.
- 18.5 If a bid is not substantially responsive, it will be rejected by the Company and may not subsequently be made responsive by the bidder by correction of the non-conformity.

#### **19. EVALUATION AND COMPARISON OF BIDS**

- 19.1 The Company will evaluate and compare bids previously determined to be substantially responsive, pursuant to ITB Clause 20.

#### **20. CONTACTING THE COMPANY**

- 20.1 No bidder shall contact the Company on any matter relating to its bid, from the time of the bid opening to the time the contract is awarded. If the bidder wishes to bring additional information to the notice of the Company it should do so in writing.
- 20.2 Any effort by a bidder to influence the Company in its decisions on bid evaluation, bid comparison, or selection may result in the rejection of the bidders bid.

## **F. AWARD OF CONTRACT**

### **21. POST QUALIFICATION**

- 21.1 The determination will take into account the bidders financial, technical capabilities. It will be based upon an examination of the documentary evidence of the bidder's qualifications submitted by the bidder, pursuant to ITB Clause 1 as well as such other information as the Company deems necessary and appropriate.
- 21.2 An affirmative determination will be a prerequisite for award of the contract to the bidder. A negative determination will result in rejection of the bidders bid, in which event the Company will proceed to the next lowest evaluated bid to make a similar determination of that bidder's capabilities to perform satisfactorily.

### **22. AWARD CRITERIA**

- 22.1 Subject to ITB Clause 7.3, the Company will award the contract to the successful bidder whose bid has been determined to be substantially responsive and as the lowest evaluated bid, provided further that the bidder is determined to be qualified to perform the contract satisfactorily.

### **23. COMPANY'S RIGHT TO VARY QUANTITIES AT TIME OF AWARD**

- 23.1 The Company reserves the right at the time of award of contract to increase or decrease the quantity of materials and services originally specified in the bid document without any change in unit price or other terms and conditions within the bid validity period.

### **24. COMPANY'S RIGHT TO ACCEPT ANY BID AND TO REJECT ANY OR ALL BIDS**

- 24.1 The Company reserves the right to accept or reject any bid, and to annul the bidding process and reject all bids at any time prior to award of Contract, without thereby incurring any liability to the affected bidder or bidders.

### **25. NOTIFICATION OF AWARD**

- 25.1 Prior to the expiration of the period of bid validity, the Company will notify the successful bidder in writing by registered letter or by mail, to be confirmed, that its bid has been accepted.
- 25.2 The notification of award will bind the successful bidder to enter into a detailed agreement with the Company within 10 days from the date of notification of award.

## SECTION III GENERAL CONDITIONS OF CONTRACT

### 1. DEFINITIONS

- 1.1 In this contract the following terms shall be interpreted as indicated:
- (a) “The Contract” means the agreement entered into between the Company and the Contractor as recorded in the Contract Form signed by the parties, including all the attachments and appendices thereto and all documents incorporated by reference therein;
  - (b) “The Contract Price” means the price payable to the Contractor under the Contract for the full and proper performance of its contractual obligations;
  - (c) “The Materials” means all the products and/or other materials which the Contractor is required to be used in the work under the Contract;
  - (d) “Services” means services ancillary to the works, other incidental services, such as installation, commissioning, provision of technical assistance, and other obligations of the Contractor covered under the contract.
  - (e) “GCC” means the General Conditions of Contract contained in this section.
  - (f) “SCC” means the Special Conditions of Contract.
  - (g) “The Company” means the Organization contracting the work, as named in SCC;
  - (h) “The Contractor” means the individual or firm undertaking the work / Service under this Contract;
  - (i) “Day” means calendar day.
  - (j) “Handing over period” means the period applicable upto completion of work and testing by the contractor at the required location mentioned in service purchase order and accepted by the Company.
  - (k) “Earnest Money Deposit” (EMD) means Bid Security / monetary or financial guarantee to be furnished by a tenderer along with its tender”.

## **2. APPLICATION**

- 2.1 These General Conditions shall apply to the extent that they are not superseded by provisions in other parts of the Contract.

## **3. STANDARDS**

- 3.1 The Work executed under this Contract shall conform to the standard requirements mentioned in the schedule.

## **4. USE OF CONTRACT DOCUMENTS AND INFORMATION**

- 4.1 The Contractor shall not, without the Company's prior written consent, disclose the Contract, or any provision thereof, or any specification, plan, drawing, pattern, sample or information furnished by or on behalf of the Company in connection therewith, to any person other than a person employed by the Contractor in performance of the Contract. Disclosure to any such employed person shall be made in confidence and shall extend only so far as may be necessary for purposes of such performance.
- 4.2 The Contractor shall not, without the Company's prior written consent, make use of any document or information enumerated in GCC Clause 4.1 except for purposes of performing the Contract.
- 4.3 Any document, other than the Contract itself, enumerated in GCC clause 4.1 shall remain the property of the Company and shall be returned (in all copies) to the Company on completion of the contractor's performance under the Contract if so required by the Company.

## **5. INSPECTION AND TESTS**

- 5.1 The Company or its representative shall have the right to inspect and/or to test the materials to confirm their conformity to the Contract at no extra cost of the Company. The Special conditions of Contract and/or the Technical Specifications shall specify what inspections and tests the Company requires and where they are to be conducted. The Company shall notify the Contractor in writing of the identity of any representatives retained for these purposes.
- 5.2 The inspections and test may be conducted on the premises, at point of completion and/or at the time of handing over the execution. The Contractor or its subcontractor(s), all reasonable facilities and assistance shall be extended to the



inspectors at no charge to the Company.

- 5.3 Should any inspected or tested materials/work fail to meet with the schedule requirement, the Company may reject them and the Contractor shall either replace the rejected materials or make all alternations necessary to meet schedule requirements free of cost to the Company.
- 5.4 The Company's right to inspect, test and, where necessary, reject the materials/work at site shall in no way be limited or waived by reason of the Materials having previously been inspected, tested and passed by the Company or its representative.

## 6 INCIDENTAL SERVICES

- 6.1 The contractor may be required to provide any or all of the services with respect to this tender, including additional services, if any, specified in SCC:

## 7. WARRANTY

- 7.1 The Contractor warrants that the Materials used under this Contract are new, unused, of the most recent or current models and incorporate all recent improvements in design and materials unless provided otherwise in the Contract. The contractor further warrants that the Materials supplied under this Contract shall have no defect arising from design, materials or workmanship (except when the design and/or material is required by the Company's specifications) or from any act or omission of the Contractor, that may develop under normal use of the supplied Materials in conditions obtaining in the state/country of final destination.
- 7.2 This warranty shall remain **valid for one year** after work completion handing over and accepted as indicated in the Contract.
- 7.3 The Company shall promptly notify the contractor in writing of any claims arising under this warranty.
- 7.4 Upon receipt of such notice, the Contractor shall, within the period specified in SCC and with all reasonable speed, repair or replace the defective Materials or parts thereof, without cost to the Company
- 7.5 If the Contractor, having been notified, fails to remedy the defect(s) within the period specified in SCC within a reasonable period, the Company may proceed to take such remedial action as may be necessary, at the Contractor's risk and expense and without prejudice to any other rights which the Company may have against the Contractor under the contract.

## **8. PAYMENT**

- 8.1 The method and conditions of payment to be made to the Contractor under the Contract shall be specified in the Special Conditions of Contract.
- 8.2 Payment shall be made in Indian Rupees

## **9. PRICES**

- 9.1 Prices charged by the Contractor for Work/Services performed under the Contract shall not vary from the prices quoted/agreed by the Contractor in its bid, with the exception of any prices adjustments authorized in the special Conditions of Contract or in the Company's request for bid validity extensions, as the case may be.

## **10. CONTRACT AMENDMENTS**

- 10.1 Subject to GCC Clause 17, no variation in or modification of the terms of the Contract shall be made except by written amendment signed by the parties.

## **11. ASSIGNMENT**

- 11.1 The Contractor shall not assign, in whole or in part, its obligations to perform under the contract, except with the Company's prior written consent.

## **12. SUBCONTRACTS**

- 12.1 The supplier shall notify the Company in writing of all subcontracts awarded under the contract if not already specified in his bid. Such notification, in his original bid or later, shall not relieve the Supplier from any liability or obligation under the contract.

## **13. LIQUIDATED DAMAGES**

- 13.1 If the Contractor fails to perform the contract/services within the period(s) specified in the Contract, the Company shall, without prejudice to its other remedies under the Contract, deduct from the Contract Price, as liquidated damages, a sum equivalent to the percentage specified in SCC of the delivered price of the delayed unperformed contract/Services for each week or part thereof of delay until actual handing over or performance, up to a maximum deduction of the percentage

specified in the SCC if any. Once the maximum is reached, the Company may consider termination of the Contract.

#### **14. TERMINATION BY DEFAULT**

- 14.1 The Company may, without prejudice to any other remedy for breach of contract, by written notice of default sent to the contractor, terminate the Contract in whole or part;
- (a) if the Contractor fails to complete any or all of the work within the time period(s) specified in the Contract, or within any extension thereof granted by the Company, or
  - (b) if the Contractor fails to perform any other obligation(s) under the contract.
- 14.2 In the event the Company terminates the Contract in whole or in part, the Company may execute, upon such terms and in such manner as it deems appropriate, Work or Services similar to those unperformed, and the Contractor shall be liable to the Company for any excess costs for such similar Works. However, the Contractor shall continue the performance of the Contract to the extent not terminated.

#### **15. FORCE MAJEURE**

- 15.1 For purposes of this Clause “Force Majeure” means an event beyond the control of the Contractor and not involving the Contractor’s fault or negligence and not foreseeable. Such events may include, but are not limited to, acts of the Company either in its sovereign or contractual capacity, wars or revolutions, fires, floods, epidemics, quarantine restrictions and freight embargoes.
- 15.2 If a Force Majeure situation arises, the Contractor shall promptly notify the Company in writing of such conditions and the cause thereof. Unless otherwise directed by the Company in writing, the Contractor shall continue to perform its obligations under the Contract as far as is reasonably practical, and shall seek all reasonable alternative means for performance not prevented by the force majeure event.

#### **16. TERMINATION FOR INSOLVENCY**

- 16.1 The Company may at any time terminate the Contract by giving written notice to the Contractor, if the Contractor becomes bankrupt or otherwise insolvent. In this

event, termination will be without compensation to the Contractor, provided that such termination will not prejudice or affect any right of action or remedy, which has accrued or will accrue thereafter to the Company.

## **17. RESOLUTION OF DISPUTES/ ARBITRATION**

- 17.1 The Company and the contractor shall make every effort to resolve amicably by direct informal negotiation any disagreement or dispute arising between them under or in connection with the Contract.
- 17.2 If, after thirty (30) days from the commencement of such informal negotiations, the Company and the Contractor have been unable to resolve amicably a Contract dispute, either party may require that the dispute be referred for resolution to the formal mechanisms specified in the General Conditions of Contract (Arbitration Clause 20.3). These mechanisms may include, but not limited to, conciliation mediated by a third Party, adjudication in an agreed national forum, and national arbitration.
- 17.3 If, HLL and the Contractor have been unable to resolve amicably a Contract dispute, such dispute or disagreement shall be settled in accordance with the Arbitration and Conciliation Act 1996. The Arbitral Tribunal shall consist of Sole Arbitrator, to be chosen from the Panel of Arbitrators notified by the Institute of Engineers (India), Kerala Chapter. Venue of the Arbitration shall be Thiruvananthapuram. Language of arbitration shall be English. Award of the Sole Arbitrator will be final and binding upon the Parties.
- 17.4 Subject to above mentioned Arbitration clause the jurisdiction of any disputes, suits and proceeding arising out of the tender shall be only in the court of Thiruvananthapuram.

## **18. GOVERNING LANGUAGE**

- 18.1 The contract shall be written in English language. English language version of the Contract shall govern its interpretation. All correspondence and documents pertaining to the Contract which are exchanged by the parties shall be written in the same language.

## **19. APPLICABLE LAW**

- 19.1 The Contract shall be interpreted in accordance with the laws of the Union of India.

**20. NOTICES**

20.1 Any notice given by one party to the other pursuant to this Contract shall be sent to other party in writing or by cable and confirmed in writing to the other Party's address specified in Special Conditions of Contract.

20.2 A notice shall be effective when delivered or on the notice's effective date, whichever is later.

**21. TAXES AND DUTIES**

21.1 Contractors shall be entirely responsible for all taxes, licenses, statutory levies etc., incurred until handing over of the contracted site / service to the Company.

## SECTION IV

### SPECIAL CONDITIONS OF CONTRACT

The following Special Conditions of Contract shall supplement the General Conditions of Contract. Whenever there is a conflict, the provisions herein shall prevail over those in the General Conditions of contract. The Corresponding clause number of the General Conditions is indicated in parentheses.

1. The work shall be completed **within 90 Days** from the date of receipt of firm Work Order / L.O.I.
2. The contractor may inspect the site at Kerala before quoting the work and any clarification regarding clarification on site and other tender related queries shall be clarified with HLL in the address/phone/email provided in the document.
3. During the execution of the work the contractor or authorized representative should be present at site.
4. Statutory deduction like Income tax, ESI, PF etc will be deducted from the Contractor's bill as per the statutory rules.
5. Security deposit: 5% of executed value shall be deducted from the each bill and shall be released after defect liability period of ONE year.
6. a) 50% of the total value of work may be released upon the completion of 60 % of the work recommended by HLL Site Engineer, countersigned by Regional In charge/ State In charge.  
  
b) Balance 50% will be paid along with the final bill only after issue of Work Completion certificate by Engineer In Charge & Regional In Charge of HLL Lifecare Ltd, countersigned by Business Manager (P&S), CMO or Deputy General Manager (Mktg), CMO.

5% amount of the Bill will be retained as retention money and will be released only after the Defect liability period of 12 months.

Final Bill to be submitted detailing the work description, quantity and rate as per the Work Order. Payment will be made against actual measurements recorded and certified jointly by HLL Engineer in charge, HLL Area Manager, HLL State In charge, the Contractor's representative, countersigned by Project Engineer, CMO and approved by Business Manager (P&S), CMO or Deputy General Manager (Mktg), CMO.

Tax Deduction: All statutory deductions like GST, Income Tax, Works Contract Tax, E.S.I., P.F. or any other government-imposed liabilities shall be borne by the Contractor (as applicable at the time of execution of job) and shall be deducted from each bill submitted by the Contractor.

Measurement & Payment terms:

- a) The method of measurement of completed work shall be in accordance with the standard measurement. Payment will be made on satisfactory completion of work as per the order. Interim or running account bills shall be submitted by the contractor for the work executed on the basis of such recorded measurements in the format of HLL. All such interim payments shall be regarded as payment by way of advances against final payment only, and shall not preclude the requiring of bad, unsound and imperfect or unskilled work to be rejected, removed, taken away and reconstructed or re-erected. Any certificate given by the officer relating to the work done or materials delivered forming part of such payment, may be modified, or corrected by any subsequent such certificate(s) or by the final certificate and shall not by itself be conclusive evidence that any work or material so which it relates is /are in accordance with the contract and certificate. Any such interim payment,/any part there of shall not in any respect conclude, determine or affect in any way powers of the engineer in charge under the contract or any of such payment s be treated as final settlement and adjustment of accounts or in any way vary or affect the contract.
  - b) If contractor is executing any extra items as per direction of Engineer in charge / Officer in charge, the rates shall be worked out as per the latest CPWD Schedule of Rates and in case, the item is not included in the CPWD schedule, the rate shall be arrived as per prevailing Market rates.
  - c) The Quantity shown in the schedule is an approximate estimated quantity. No rate revision will be entertained if the quantity increases/decreases due to the site condition while executing the work.
  - d) Measurement is to be recorded in each stage of the work and the payment will be made on actual measurement of the work as per the order.
  - e) Final payment shall be paid only after clearing the site as per direction of Engineer-in-charge/ Officer in charge.
1. All the materials and tools required for the work shall be procured by the contractor and brought to the site to complete the work in the time frame. Entry of men/ materials should be done through the security gate only and the details of the same shall be recorded in the register kept at the security office and the copy of details shall be submitted to the Projects in-charge. All the material brought to the work shall be as per the schedule and samples of materials shall be handed to the project in-charge.

The contractor has to arrange all the necessary insurance coverage for the materials/ machines / work men deployed by him at his own cost.

2. **Water and Electricity:** The contractor shall make his own arrangement for water and electricity required for the works. HLL will not be responsible for the supply of either electricity or water. If the Contractor fails to execute any or all of the work or perform the Services within the time period(s) specified in the Tender/Purchase Order / Work order, the HLL shall, without prejudice to its other remedies under the Contract, deduct from the Contract Price, as penalty, a sum equivalent to the percentage specified in the various terms and conditions of the contract.
3. A delay by the Contractor in the performance of its contract obligations shall render the Contractor liable to the imposition of penalty pursuant to this tender/Work Order/contract, unless an extension of time is agreed upon pursuant to agreement/ Work Order without the application of liquidated damages.
4. Penalty shall be imposed as per the company rules for any delay committed by the contractor in completing the work as per the order. (Ref. Clause.16 - LIQUIDATED DAMAGES)

#### **5. CONTRACT AMENDMENTS**

No variation in or modification of the terms of the Contract shall be made except by written amendment signed by the parties.

#### **15. ASSIGNMENT**

The Contractor shall not assign, in whole or in part, its obligations to perform under the contract, except with the HLL's prior written consent.

#### **16. LIQUIDATED DAMAGES**

If the Contractor fails to perform the Services within the period(s) specified in the Contract, the HLL shall, without prejudice to its other remedies under the Contract, deduct from the Contract Price, as liquidated damages, a sum equivalent to 2.5 percentage of the value of the delayed Work or unperformed Services for each week or part thereof of delay until actual completion of performance, up to a maximum deduction of 15 percentage. Once the maximum is reached, the HLL may consider termination of the Contract.



## SECTION V QUALIFICATION CRITERIA

**(Referred to in Clause 1 of ITB Eligible Bidders)**

1) Bidders should have Minimum 1 year experience in the relevant field. Documentary proof for the above eligibility criteria should be submitted along with the offer.

2) Bidders should have experience of having successfully completed within a period of last 1 years ending 31/07/2018 at least

- i. One similar work of value not less than Rs 13 Lakhs **Or**
- ii. Two similar works, each of value not less than Rs 10 Lakhs **Or**
- iii. Three similar works, each of value not less than Rs 6 Lakhs

3) Bidder should have satisfactorily completed at least one work for any Central/State Government Departments or Central/State PSU's or local bodies in the last three years ending 31/07/2018.

Note:- Copies of Work orders and Completion certificates issued by the Client/Authority concerned shall be submitted in proof of the same.

**The bidder should fulfil all the mentioned criteria and proof of such document shall be submitted long with the bid, failing which bid will be treated as non-responsive.**

**SECTION VI**

**PROFORMA ABOUT THE CONTRACTOR**

**“HLL/CHO-PROJ/KL-HCD/CIV&ELE/AYUSH/2018-19/04, DT. 16.08.2018”**  
(Please attach detailed proforma incorporating the information given below)

Tender No.....  
DATE OF OPENING.....

NAME OF THE TENDERER:.....

1. Name & Full address of the Contractor:

- (a) PAN No
- (b) GST No \*\*\*\*\*

**(specify whether registered with Kerala State. Attach relevant copies as proof of evidence)**

- (a) Any other details
- (b) Specify whether SSI / MSME unit

2. (a) Telephone No. Office/Personal  
(b) Fax No. Office/Personal  
(c) e-mail address

3. Details of Staff:

- a) technical :
- b) skilled :
- c) unskilled :

**SEAL OF THE TENDERER**

**SIGNATURE**  
**NAME AND ADDRESS OF TENDERER**

**SECTION VII**

**PROFORMA FOR PERFORMANCE STATEMENT**

Proforma for Performance Statement (for a period of last year)

**HLL/CHO-PROJ/KL-HCD/CIV&ELE/AYUSH/2018-19/04, DT. 16.08.2018**

Name of the Tenderer:.....

Name & Address of the Tenderer / Service Provider:.....

.....

Order placed by (Full Address of Company / Consignee)	Order No. and Date	Description and quantity of ordered work and service	Value of order	Date of Completion of Contract		Remarks indicating reasons for delay, if any	Have the works been satisfactorily maintained?  (Attach a documentary proof)
				As per Contract	Actual		

We hereby certify that if at any time, information furnished by us is proved to be false or incorrect, we are liable for any action as deemed fit by the Company in addition to forfeiture of earnest money.

Signature and Seal of the Bidder .....

.....

**SECTION VIII**

**HLL LIFECARE LIMITED**

(A Government of India Enterprise)

Projects Division Corporate Head Office, Poojappura.P.O,

Thiruvananthapuram – 695012, Kerala, India

Phn: 0471- 2354949, 2775588

**HLL/CHO-PROJ/KL-HCD/CIV&ELE/AYUSH/2018-19/04, DT. 16.08.2018**

**INDEMINITY CLAUSE**

If the contractor fails to execute the order within the time prescribed for the handing over of works ordered or violates or infringes the existing rates as agreed to as mentioned in the work order, the contractor shall and will indemnify the company against all losses or damages whatsoever to be incurred or sustained including the legal cost or expenses incurred by the company by reason of non-handing over of works at agreed quantity and rate within the time specified in the work order. The company will initiate legal action if the contractor fails to execute the work order as per the schedule in the work order for the actual loss suffered. No quantity tolerance will be permitted in this regard unless otherwise prior approval is taken by the company before executing any excess quantity and shall be at the risk of the contractor. Responsiveness of the Bid shall be at the discretion of HLL.

The contractor shall have no right to change the quantity stipulated in the work order.

Bid pronounced Non Responsive by HLL shall be summarily rejected.

The decision of HLL will be final and no correspondence of this shall be entertained.

We have read and understood the above conditions and agree to abide by the same.

**PLACE:**

**NAME AND SIGNATURE OF THE TENDERER**

**DATE:**

**(WITH OFFICE SEAL)**

**SECTION IX**

**HLL LIFECARE LIMITED**

(A Government of India Enterprise)  
Projects Division Corporate Head Office, Poojappura.P.O,  
Thiruvananthapuram – 695012, Kerala, India  
Phn: 0471- 2354949, 2775588

**HLL/CHO-PROJ/KL-HCD/CIV&ELE/AYUSH/2018-19/04, DT. 16.08.2018**

**DECLARATION**

I / WE, The Bidder undertake, we shall execute, within the purview of the contract, all the works and activities includes; transportation, loading, unloading and other technical work for the installation of the equipment at the designated site as per the schedule/contract /work order, at **Kerala**.

We confirm having read and understood all the schedule requirements, instructions, forms, terms and conditions and other requirements of the above tender (both expressed and implied) in full and that we agree to abide by all without any deviation.

**SEAL OF THE TENDERER**

**SIGNATURE**  
**NAME AND ADDRESS OF TENDERER**

PART : B

SECTION X ABSTRACT PRICE SCHEDULE

SECTION XI PRICE SCHEDULE

SECTION XII SITE PLAN

**SECTION X**

**HLL LIFECARE LIMITED**

(A Government of India Enterprise)  
Projects Division Corporate Head Office, Poojappura.P.O,  
Thiruvananthapuram – 695012, Kerala, India  
Phn: 0471- 2354949, 2775588

**Upgradation of Govt. Ayurveda Dispensary, Kunnathukal,  
Thiruvananthapuram, Kerala state  
(CIVIL AND ELECTRICAL WORKS ON TURNKEY BASIS)**

**ABSTRACT PRICE BID**

Site. No.	Details of Hospital	Amount Quoted (Rs)
XI A	<b>Upgradation of Govt. Ayurveda Dispensary, Kunnathukal, Thiruvananthapuram, Kerala state</b>	
<b>Total Rs (Including GST @ 18%):</b>		

Total words in Rupees: \_\_\_\_\_

\* Bidder shall clearly mention whether the GST included or excluded with % in the price bid. If specific indication of GST is not mentioned, then their quoted rate will be treated as inclusive of GST.

Bidder has to quote as per the Make/Brand specified in the BOQ, proposed to use for the project, and has to mark the Make/Brand in the quote / price schedule.

SEAL OF THE TENDERER

Date:

NAME AND ADDRESS OF TENDERER

SIGNATURE

**SECTION XIA****Upgradation of Govt. Ayurveda Dispensary, Kunnathukal,  
Thiruvananthapuram, Kerala state**

S.N	Description	Quantity	Unit	Rate in Rs.	Amount in Rs.
<b>Civil Work</b>					
<b>EARTH WORK</b>					
1	Earth work in excavation by mechanical means (Hydraulic excavator) / manual means in foundation trenches or drains (not exceeding 1.5 m in width or 10 sqm on plan), including dressing of sides and ramming of bottoms, lift upto 1.5 m, including getting out the excavated soil and disposal of surplus excavated soil as directed, within a lead of 50 m. All kinds of soil.				
	Retaining Wall	0.72			
	TOTAL	0.72			
	Say	1.00	Cum		
2	Filling available excavated earth (excluding rock) in trenches, plinth, sides of foundations etc. in layers not exceeding 20cm in depth, consolidating each deposited layer by ramming and watering, lead up to 50 m and lift upto 1.5 m.				
	Retaining Wall	0.30			
	TOTAL	0.30			
	Say	1.00	Cum		
<b>CEMENT CONCRETE</b>					
3	Providing and laying in position cement concrete of specified grade excluding the cost of centering and shuttering - All work up to plinth level : 1:4:8 (1 Cement : 4 coarse sand (zone-III) : 8 graded stone aggregate 40 mm nominal size)				
	Retaining Wall	0.15			
	Ramp	0.20			
	TOTAL	0.35			
	Say	1.00	Cum		



**SECTION XIA****Upgradation of Govt. Ayurveda Dispensary, Kunnathukal,  
Thiruvananthapuram, Kerala state**

S.N	Description	Quantity	Unit	Rate in Rs.	Amount in Rs.
DISMANTLING & DEMOLISHING					
4	Taking out doors, windows and clerestory window shutters (steel or wood) including stacking within 50 metres lead : Of area 3 sq. metres and below				
	Pharmacy Window's	2.00			
	MO RoomWindow	1.00			
	Passage Door	1.00			
	TOTAL	4.00			
	Say	4.00	Each		
5	Dismantling roofing including ridges, hips, valleys and gutters etc., and stacking the material within 50 metres lead of Asbestos sheet				
	Toilet Roof	14.58			
	TOTAL	14.58			
	Say	15.00	Sqm		
6	Demolishing R.C.C. work manually/ by mechanical means including stacking of steel bars and disposal of unserviceable material within 50 metres lead as per direction of Engineer - in- charge.				
	Passage	0.23			
	Pharmacy	0.14			
	Entrance	0.34			
	TOTAL	0.70			

**SECTION XIA****Upgradation of Govt. Ayurveda Dispensary, Kunnathukal,  
Thiruvananthapuram, Kerala state**

S.N	Description	Quantity	Unit	Rate in Rs.	Amount in Rs.
	Say	1.00	Cum		
MASONRY WORK					
7	Brick work with common burnt clay F.P.S. (non modular) bricks of class designation 7.5 in superstructure above plinth level up to floor V level in all shapes and sizes in : Cement mortar 1:4 (1 cement : 4 coarse sand)				
	Yoga Center	4.35			
		5.87			
	Window Closing	0.62			
	Door Closing	0.81			
	TOTAL	11.64			
	Say	13.00	Cum		
8	Random rubble masonry with hard stone in foundation and plinth including levelling up with cement concrete 1:6:12 (1 cement : 6 coarse sand : 12 graded stone aggregate 20 mm nominal size) upto plinth level with : Cement mortar 1:6 (1 cement : 6 coarse sand)				
	Retaining Wall	0.81			
	TOTAL	0.81			
	Say	1.00	Cum		
RCC					

**SECTION XIA****Upgradation of Govt. Ayurveda Dispensary, Kunnathukal,  
Thiruvananthapuram, Kerala state**

S.N	Description	Quantity	Unit	Rate in Rs.	Amount in Rs.
9	Reinforced cement concrete work in walls (any thickness), including attached pilasters, buttresses, plinth and string courses, fillets, columns, pillars, piers, abutments, posts and struts etc. up to floor five level, excluding cost of centering, shuttering, finishing and reinforcement : 1:1.5:3 (1 cement : 1.5 coarse sand : 3 graded stone aggregate 20 mm nominal size)				
	Manhole Slab	0.75			
	Retaining Wall	0.52			
	TOTAL	1.27			
	Say	2.00	Cum		
10	Steel reinforcement for R.C.C. work including straightening, cutting, bending, placing in position and binding all complete upto plinth level & above plinth level. Thermo-Mechanically Treated bars				
	Manhole Slab	60.00			
	Retaining Wall	31.05			
	TOTAL	91.05			
	Say	95.00	Kg		
PLASTERING					
11	Raking out joints in lime or cement mortar and preparing the surface for re-pointing or replastering, including disposal of rubbish to the dumping ground, all complete as per directions of Engineer-In-Charge.				
	For Existing Random Rouble Masonary all Round the building	19.80			
	TOTAL	19.80			
	Say	20.00	Sqm		

**SECTION XIA****Upgradation of Govt. Ayurveda Dispensary, Kunnathukal,  
Thiruvananthapuram, Kerala state**

S.N	Description	Quantity	Unit	Rate in Rs.	Amount in Rs.
12	Pointing on stone work with cement mortar 1:3 (1 cement : 3 fine sand) : Raised and cut pointing.				
	For Existing Random Rouble Masonary all Round the building	19.80			
	TOTAL	19.80			
	Say	20.00	Sqm		
13	12 mm cement plaster finished with a floating coat of neat cement of mix :1:3(1 cement: 3 fine sand)				
	Yoga Center	30.24			
		40.80			
	TOTAL	71.04			
	Say	72.00	Sqm		
<b>ALUMINUM WORK</b>					
14	Providing and fixing aluminium work for doors, windows, ventilators and partitions with extruded built up standard tubular sections/ appropriate Z sections and other sections of approved make conforming to IS: 733 and IS: 1285, fixing with dash fasteners of required dia and size, including necessary filling up the gaps at junctions, i.e. at top, bottom and sides with required EPDM rubber/ neoprene gasket etc. Aluminium sections shall be smooth, rust free, straight, mitred and jointed mechanically wherever required including cleat angle, Aluminium snap beading for glazing / paneling, C.P. brass / stainless steel screws, all complete as per architectural drawings and the directions of Engineer-in-charge. (Glazing, paneling and dash fasteners to be paid for separately) :For Fixed Portion , Powder coated aluminium (minimum thickness of powder coating 50 micron) including rubber beedings in doors, windows and fixed portions.				
	Pharmacy Counter ; vertical	3.27			
	; Horizontal	2.18			

**SECTION XIA****Upgradation of Govt. Ayurveda Dispensary, Kunnathukal,  
Thiruvananthapuram, Kerala state**

S.N	Description	Quantity	Unit	Rate in Rs.	Amount in Rs.
	OP Counter ; vertical	3.27			
	; Horizontal	3.27			
	Feeding Room & OP Counter ; vertical	26.16			
		10.90			
	; Horizontal	26.16			
		9.81			
	OP2 & Treatment Room's ; vertical	57.23			
	; Horizontal	78.48			
	Slab ; vertical	17.66			
	; Horizontal	17.44			
		6.54			
	Door's for Rack's Below Slab ; vertical	11.77			
	; Horizontal	7.85			
	Shelf ; vertical	20.93			
	; Horizontal	75.21			
		17.17			
	Yoga Center ; vertical	32.70			
	; Horizontal	65.40			
	Door's ; vertical	33.57			
	; Horizontal				

**SECTION XIA****Upgradation of Govt. Ayurveda Dispensary, Kunnathukal,  
Thiruvananthapuram, Kerala state**

S.N	Description	Quantity	Unit	Rate in Rs.	Amount in Rs.
		22.89			
	TOTAL	549.85			
	Say	550.00	Kg		
15	For shutters of doors, windows & ventilators including providing and fixing hinges/ pivots and making provision for fixing of fittings wherever required including the cost of EPDM rubber / neoprene gasket required (Fittings shall be paid for separately). Powder coated aluminium (minimum thickness of powder coating 50 micron)				
	Shelf Door's ; vertical	18.31			
	; Horizontal	36.62			
	Door's ; vertical	32.05			
	; Horizontal	20.60			
	TOTAL	107.58			
	Say	108.00	Kg		
16	Providing and fixing anodised aluminium grill (anodised transparent or dyed to required shade according to IS: 1868 with minimum anodic coating of grade AC 15) of approved design/pattern, with approved standard section and fixed to the existing window frame with C.P. brass/ stainless steel screws @ 200 mm centre to centre, including cutting the grill to proper opening size for fixing and operation of handles and fixing approved anodised aluminium standard section around the opening, all complete as per requirement and direction of Engineer-in-charge. (Only weight of grill to be measured for payment).				
	Yoga Center	18.14			
		24.48			
	TOTAL	42.62			
	Say	45.00	Kg		

**SECTION XIA**

**Upgradation of Govt. Ayurveda Dispensary, Kunnathukal,  
Thiruvananthapuram, Kerala state**

S.N	Description	Quantity	Unit	Rate in Rs.	Amount in Rs.
17	Providing and fixing 12 mm thick prelaminated particle board flat pressed three layer or graded wood particle board conforming to IS: 12823 Grade I Type II, in panelling fixed in aluminum doors, windows shutters and partition frames with C.P. brass / stainless steel screws etc. complete as per architectural drawings and directions of Engineer-in-charge. Pre-laminated particle board with decorative lamination on both sides.				
	Feeding Room & OP Counter	6.93			
		4.35			
	OP2 & Treatment Room's	43.20			
	Door's	6.48			
	Pharmacy Slab Covering	5.76			
		3.24			
	Shelf	3.78			
		4.05			
		6.30			
	OP Counter Slab	1.50			
	Doors	6.30			
	TOTAL	91.89			
	Say	92.00	Sqm		
18	Providing and fixing glazing in aluminium door, window, ventilator shutters and partitions etc with PVC/neoprene gasket etc. complete as per the architectural drawings and the directions of engineer-in-charge. With float glass panes of 5.5 mm thickness				
	Feeding Room & OP Counter	2.97			

**SECTION XIA****Upgradation of Govt. Ayurveda Dispensary, Kunnathukal,  
Thiruvananthapuram, Kerala state**

S.N	Description	Quantity	Unit	Rate in Rs.	Amount in Rs.
	OP2 & Treatment Room's	16.20			
	Shelf Door's	5.04			
	Door's	5.67			
	Counter	0.50			
	TOTAL	30.38			
	Say	31.00	Sqm		
19	Providing and fixing 100mm brass locks (best make of approved quality) for aluminium doors including necessary cutting and making good etc. complete.				
	Doors	7.00			
	Shelf Door's	28.00			
	Rack Door's	6.00			
	TOTAL	41.00			
	Say	41.00	Each		
20	Providing and fixing PTMT Tower Bolts with 12 mm one piece rod inside and necessary screws etc., complete. 202x42x18 mm weighing not less than 78 gms				
	Doors	7.00			
	Shelf Door's	28.00			
	Rack Door's	6.00			
	TOTAL	41.00			
	Say	41.00	Each		



**SECTION XIA****Upgradation of Govt. Ayurveda Dispensary, Kunnathukal,  
Thiruvananthapuram, Kerala state**

S.N	Description	Quantity	Unit	Rate in Rs.	Amount in Rs.
21	Providing and fixing aluminium tubular handle bar 32 mm outer dia, 3.0 mm thick & 2100 mm long with SS screws etc .complete as per direction of Engineer-in-Charge. Polyester powder coated minimum thickness 50 micron aluminium tubular handle bar				
	Doors	14.00			
	TOTAL	14.00			
	Say	12.00	Each		
22	Providing and fixing aluminium round shape handle of outer dia 100 mm with SS screws etc. complete as per direction of Engineer-incharge Anodized (AC 15 ) aluminium.				
	Shelf Door's	28.00			
	Rack Door's	7.00			
	TOTAL	35.00			
	Say	35.00	Each		
23	Providing and fixing aluminium extruded section body tubular type universal hydraulic door closer (having brand logo with IS : 3564, embossed on the body, door weight upto 36 kg to 80 kg and door width from 701 mm to 1000 mm), with double speed adjustment with necessary accessories and screws etc. complete.				
	Door's	6.00			
	TOTAL	6.00			
	Say	6.00	Each		

**SECTION XIA****Upgradation of Govt. Ayurveda Dispensary, Kunnathukal,  
Thiruvananthapuram, Kerala state**

S.N	Description	Quantity	Unit	Rate in Rs.	Amount in Rs.
24	Providing and fixing 150 mm bright finished floor brass door stopper with rubber cushion, necessary brass screws etc. to suit shutter thickness complete				
	Door's	7.00			
	TOTAL	7.00			
	Say	7.00	Each		
<b>STEEL WORK</b>					
25	Structural steel work riveted, bolted or welded in built up sections, trusses and framed work, including cutting, hoisting, fixing in position and applying a priming coat of approved steel primer all complete.				
	Truss For Toilet				
	Truss Member 50*25*1.6	25.90			
	Tie Beam Bracing 25*25*1	24.83			
	Cleat / Angle Plate 150*150*3.6	5.08			
	Truss For Passage				
	Truss Member 50*25*1.6	11.10			
	Tie Beam Bracing 25*25*1	5.78			
	Cleat / Angle Plate 150*150*3.6	5.08			
	Truss For Yoga Center				
	Truss Member 50*25*1.6	42.18			
	Truss Bracing 50*25*1.6	54.39			
	Tie Beam Bracing 25*25*1	29.30			

**SECTION XIA****Upgradation of Govt. Ayurveda Dispensary, Kunnathukal,  
Thiruvananthapuram, Kerala state**

S.N	Description	Quantity	Unit	Rate in Rs.	Amount in Rs.
	Column 100 MM DIA *3.6	147.00			
	Cleat / Angle Plate 150*150*3.6	17.78			
	TOTAL	368.42			
	Say	370.00	Kg		
26	Providing and fixing stainless steel ( Grade 304) railing made of Hollow tubes, channels, plates etc., including welding, grinding, buffing, polishing and making curvature (wherever required) and fitting the same with necessary stainless steel nuts and bolts complete, i/c fixing the railing with necessary accessories & stainless steel dash fasteners , stainless steel bolts etc., of required size, on the top of the floor or the side of waist slab with suitable arrangement as per approval of Engineer-in incharge, (for payment purpose only weight of stainless steel members shall be considered excluding fixing accessories such as nuts, bolts,fasteners etc.).				
	For Hand Rails Near Toilet				
	50.8mm OD SS Pipe	1.85			
	50.8mm OD SS Pipe	2.96			
	19.05 OD SS Pipe	1.34			
	For Toilet's				
	50.8mm OD SS Pipe	4.45			
	For Ramp Hand Rails	-			
	50.8mm OD SS Pipe	3.09			
	50.8mm OD SS Pipe	2.96			
	19.05 OD SS Pipe	1.79			
	TOTAL				

**SECTION XIA****Upgradation of Govt. Ayurveda Dispensary, Kunnathukal,  
Thiruvananthapuram, Kerala state**

S.N	Description	Quantity	Unit	Rate in Rs.	Amount in Rs.
		18.45			
	Say	20.00	Kg		
27	Providing corrugated Aluminum sheet (0.5mm thk)roofing including vertical / curved surfacefixed with polymer coated J or L hooks, bolts and nuts 8 mm diameterwith bitumen and G.I. limpet washers or with G.I. limpet washers filledwith white lead, including a coat of approved steel primer and two coatsof approved paint on overlapping of sheets complete (up to any pitch inhorizontal/ vertical or curved surfaces), excluding the cost of purlins, raftersand trusses and including cutting to size and shape wherever required.1.00 mm thick with zinc coating not less than 275 gm/m <sup>2</sup>				
	Yoga Center	80.64			
	Toilet's	16.10			
	Passage	5.00			
	TOTAL	101.74			
	Say	105.00	Sqm		
28	Providing and fixing on wall face unplasticeised Rigid PVC rain water pipes conforming to IS : 13592 Type A, including jointing with seal ring conforming to IS : 5382, leaving 10 mm gap for thermal expansion, (i) Single socketed pipes embedded inside the RC columns/masonry in position with all necessary specials like shoes , bends or any other specials required to suit site conditions etc., jointed with wavin cement and lubricants with necessary MS clamps,brackets ,bolts and nuts all complete as directed. 110mm dia-6kg/sq.cm"				
	Yoga Center	18.00			
	Toilet's	3.50			
	TOTAL	21.50			
	Say	22.00	RM		
FALSE CEILING					

**SECTION XIA**

**Upgradation of Govt. Ayurveda Dispensary, Kunnathukal,  
Thiruvananthapuram, Kerala state**

S.N	Description	Quantity	Unit	Rate in Rs.	Amount in Rs.
29	Providing and fixing tiled false ceiling of specified materials of size 595x595 mm in true horizontal level, suspended on inter locking metal grid of hot dipped galvanized steel sections ( galvanized @ 120 grams/ sqm, both side inclusive) consisting of main "T" runner with suitably spaced joints to get required length and of size 24x38 mm made from 0.30 mm thick (minimum) sheet, spaced at 1200 mm center to center and cross "T" of size 24x25 mm made of 0.30mm thick (minimum) sheet, 1200 mm long spaced between main"T" at 600 mm center to center to form a grid of 1200x600 mm and secondary cross "T" of length 600 mm and size 24x25 mm made of 0.30 mm thick (minimum) sheet to be interlocked at middle of the 1200x600 mm panel to form grids of 600x600 mm and wall angle of size 24x24x0.3 mm and laying false ceiling tiles of approved texture in the grid including, required cutting/making, opening for services like diffusers, grills, light fittings, fixtures, smoke detectors etc. Main "T" runners to be suspended from ceiling using GI slotted cleats of size 27 x 37 x 25 x1.6 mm fixed to ceiling with 12.5 mm dia and 50 mm long dash fasteners, 4 mm GI adjustable rods with galvanised butterfly level clips of size 85 x 30 x 0.8 mm spaced at 1200 mm center to center along main T, bottom exposed width of 24 mm of all T-sections shall be pre-painted with polyester paint, all complete for all heights as per specifications, drawings and as directed by Engineer-in-charge.12.5 mm thick square edge PVC Laminated Gypsum Tile of size 595x595 mm, made of Gypsum plasterboard, manufactured from natural gypsum as per IS 2095 part I and laminated with white 0.16mm thick fire retardant PVC film on the face side and 12micron metalized polyester on the back side with all edges sealed with the face side PVC film which goes around and wraps the edges and is bonded to the edges and the back side metalized polyester film so as to make the tile a completely sealed unit.				
	Yoga Center	53.550			
	TOTAL	53.550			
	Say	55.000	SQM		
WALL TILE					
30	Providing and fixing Ist quality ceramic glazed wall tiles conforming to IS: 15622 (thickness to be specified by the manufacturer), of approved make, in all colours, shades except burgundy, bottle green, black of any size as approved by Engineer-in-Charge, in skirting, risers of steps and dados, over 12 mm thick bed of cement mortar 1:3 (1 cement : 3 coarse sand) and jointing with grey cement slurry @ 3.3kg per sqm,including pointing in white cement mixed with pigment of matching shade complete.				
	Toilet's	12.60			
	Deduction For Doors	(5.04)			
	TOTAL	7.56			
	Say	8.00	Sqm		

**SECTION XIA**

**Upgradation of Govt. Ayurveda Dispensary, Kunnathukal,  
Thiruvananthapuram, Kerala state**

S.N	Description	Quantity	Unit	Rate in Rs.	Amount in Rs.
FLOOR TILE					
31	Providing and laying vitrified floor tiles in different sizes (thickness to be specified by the manufacturer) with water absorption less than 0.08% and conforming to IS: 15622, of approved make, in all colours and shades, laid on 20mm thick cement mortar 1:4 (1 cement : 4 coarse sand), jointing with grey cement slurry @ 3.3kg/sqm including grouting the joints with white cement and matching pigments etc., complete Size of Tile 600x600 mm				
	Yoga Center	56.55			
	TOTAL	56.55			
	Say	57.00	SQM		
32	Providing and laying rectified Ceramic floor tiles of size 300x300 mm or more (thickness to be specified by the manufacturer), of 1st quality conforming to IS : 15622, of approved make, in all colours, shades, except White, Ivory, Grey, Fume Red Brown, laid on 20 mm thick Cement Mortar 1:4 (1 Cement : 4 Coarse sand), jointing with grey cement slurry @ 3.3kg/sqm including pointing the joints with white cement and matching pigments etc., complete.				
	Toilet's	2.25			
	TOTAL	2.25			
	Say	3.00	Sqm		
33	Providing and fixing 18 mm thick gang saw cut, mirror polished, premoulded and prepolished, machine cut for kitchen platforms, vanity counters, window sills, facias and similar locations of required size, approved shade, colour and texture laid over 20 mm thick base cement mortar 1:4 (1 cement : 4 coarse sand), joints treated with white cement, mixed with matching pigment, epoxy touch ups, including rubbing, curing, moulding and polishing to edges to give high gloss finish etc. complete at all levels. Granite of any colour and shade. Area of slab over 0.50 sqm				
	Slab	1.92			
	TOTAL	1.92			
	Say	2.00	Sqm		

**SECTION XIA****Upgradation of Govt. Ayurveda Dispensary, Kunnathukal,  
Thiruvananthapuram, Kerala state**

S.N	Description	Quantity	Unit	Rate in Rs.	Amount in Rs.
34	Chequered terrazo tiles 22 mm thick with graded marble chips of size up to 6 mm in floors, jointed with neat cement slurry mixed with pigment to match the shade of the tiles, including rubbing and polishing complete, on 20 mm thick bed of cement mortar 1:4 (1 cement :4 coarse sand) : Dark shade pigment using ordinary cement				
	Ramp	2.40			
	TOTAL	2.40			
	Say	3.00	Sqm		
<b>PAINTING</b>					
35	Removing white or colour wash by scrapping and sand papering and preparing the surface smooth including necessary repairs to scratches etc. complete				
	Sun Shade	38.40			
	TOTAL	60.80			
	Say	110.00	Sqm		
36	Providing and applying plaster of paris putty of 2 mm thickness over plastered surface to prepare the surface even and smooth complete.				
	Yoga Center	18.90			
	TOTAL	25.50			
	Sun Shade	38.40			

**SECTION XIA****Upgradation of Govt. Ayurveda Dispensary, Kunnathukal,  
Thiruvananthapuram, Kerala state**

S.N	Description	Quantity	Unit	Rate in Rs.	Amount in Rs.
		60.80			
	TOTAL	143.60			
	Say	145.00	Sqm		
37	Finishing walls with Acrylic Smooth exterior paint of required shade : (Two or more coat applied @ 1.67 ltr/10 sqm over and including priming coat of exterior primer applied @ 2.20 kg/10 sqm)				
	Yoga Center	18.90			
		25.50			
	Sun Shade	38.40			
		60.80			
	TOTAL	143.60			
	Say	145.00	Sqm		
38	Painting Steel work with Deluxe Multi Surface Paint to give an even shade. Two or more coat applied @ 0.90 ltr/ 10 sqm over an under coat of primer applied @ 0.80 ltr/ 10 sqm of approved brand and manufacture				
	Truss Work	5.00			
	Truss Work	16.10			
	Grill	21.85			
	TOTAL	42.95			
	Say		Sqm		



<b><u>SECTION XIA</u></b>					
<b><u>Upgradation of Govt. Ayurveda Dispensary, Kunnathukal, Thiruvananthapuram, Kerala state</u></b>					
S.N	Description	Quantity	Unit	Rate in Rs.	Amount in Rs.
		50.00			
WATER SUPPLY & SANITARY WORKS					
39	Providing and fixing Stainless Steel A ISi 304 (18/8) kitchen sink as per IS: 13983 with C.I. brackets and stainless steel plug 40 mm, including painting of fittings and brackets, cutting and making good the walls wherever required : Kitchen sink without drain board 610x460 mm bowl depth 200 mm				
	Pharmacy	1.00			
	TOTAL	1.00			
	Say	1.00	Each		
40	Providing and fixing wash basin with C.I. brackets, 15 mm C.P. brass pillar taps, 32 mm C.P. brass waste of standard pattern, including painting of fittings and brackets, cutting and making good the walls wherever require:				
	OP 2	1.00			
	Treatment Room	2.00			
	TOTAL	3.00			
	Say	4.00	Each		
41	Providing and fixing PVC Waste pipe for sink or wash basin including PVC waste fittings complete.:Semi rigid pipe 32mm dia				
		4.00			
	TOTAL	4.00			

**SECTION XIA****Upgradation of Govt. Ayurveda Dispensary, Kunnathukal,  
Thiruvananthapuram, Kerala state**

S.N	Description	Quantity	Unit	Rate in Rs.	Amount in Rs.
	Say	4.00	Each		
42	Providing and fixing PTMT Waste coupling for wash basin and sink of approved quality, colour and make. Waste coupling 31mm of 79mm length and 62mm breadth, weighing not less than 45 gms.				
		4.00			
	TOTAL	4.00			
	Say	4.00	Each		
43	Providing and fixing white vitreous china pedestal type water closet(European type W.C. pan) with seat and lid, 10 litre low level white P.V.C.flushing cistern, including flush pipe, with manually controlled device(handle lever), conforming to IS : 7231, with all fittings and fixturescomplete, including cutting and making good the walls and floors wherever required :W.C. pan with ISI marked white solid plastic seat and lid				
		2.00			
	TOTAL	2.00			
	Say	2.00	Each		
44	Providing and fixing gun metal gate valve with C.I. wheel of approved quality -25 mm nominal bore				
		2.00			
	TOTAL	2.00			
	Say	2.00	Each		

**SECTION XIA****Upgradation of Govt. Ayurveda Dispensary, Kunnathukal,  
Thiruvananthapuram, Kerala state**

S.N	Description	Quantity	Unit	Rate in Rs.	Amount in Rs.
45	Providing and fixing PTMT grating of approved quality and colour. Rectangular type with openable circular lid 150 mm nominal size square 100 mm diameter of the inner hinged round grating.				
		2.00			
	TOTAL	2.00			
	Say	2.00	Each		
	Providing and fixing Chlorinated Polyvinyl Chloride (CPVC) pipes, having thermal stability for hot & cold water supply, including all CPVC plain & brass threaded fittings, i/c fixing the pipe with clamps at 1.00 m spacing. This includes jointing of pipes & fittings with one step CPVC solvent cement and the cost of cutting chases and making good the same including testing of joints complete as per direction of Engineer in Charge. Concealed work, including cutting chases and making good the walls etc				
46	20mm nominal outer dia Pipesv	25.00	M		
47	25mm nominal outer dia Pipes	25.00	M		
48	32mm nominal outer dia Pipes	25.00	M		
49	Providing and fixing 8 mm dia C.P. / S.S. Jet with flexible tube upto 1 metre long with S.S. triangular plate to European type W.C. of quality and make as approved by Engineer - in charge.				
		2.00			
	TOTAL	2.00			
	Say	2.00	Each		
50	Providing and fixing brass bib cock of approved quality : 20 mm nominal bore each				
		3.00			

**SECTION XIA****Upgradation of Govt. Ayurveda Dispensary, Kunnathukal,  
Thiruvananthapuram, Kerala state**

S.N	Description	Quantity	Unit	Rate in Rs.	Amount in Rs.
	TOTAL	3.00			
	Say	3.00	Each		
51	Providing and fixing soil, waste and vent pipes :100 mm dia Sand cast iron S&S pipe as per IS: 1729				
		20.00			
	TOTAL	20.00			
	Say	20.00	M		
<b>Sub Total (Civil Work)</b>					
<b>Electrical Work</b>					
1	<b>Point wiring in PVC conduit with modular type switch.</b>				
	Wiring for light point/ fan point/ exhaust fan point/ call bell point with 1.5 sq.mm FRLS PVC insulated copper conductor single core cable in surface / recessed medium class PVC conduit, with modular switch, modular plate, suitable GI box and earthing the point with 1.5 sq.mm FRLS PVC insulated copper conductor single core cable etc. as required. switch, modular plate, suitable GI box and earthing the point with 1.5 sq.mm FRLS PVC insulated copper conductor single core cable etc. as required.				
	Group C				
2	<b>Wiring through PVC conduit</b>				
	Wiring for circuit/submain wiring along with earth wire with the following sizes of FR PVC insulated copper conductor, single core cable in surface/recessed medium class PVC conduit as required.(Make:Havells/Finolex/V-guard/Polycab)				
a	2X1.5 sq.mm + 1X1.5 sq.mm earth wire				
b	2X2.5 sq.mm + 1 X2.5 sq mm earth wire				
c	2X4 sq.mm + 1X4 sq.mm earth wire				

**SECTION XIA****Upgradation of Govt. Ayurveda Dispensary, Kunnathukal,  
Thiruvananthapuram, Kerala state**

S.N	Description	Quantity	Unit	Rate in Rs.	Amount in Rs.
3	<b>Telephone wiring in existing conduit:</b>				
	Supplying and drawing following pair 0.5 sq mm FR PVC insulated annealed copper conductor, unarmored telephone cable in the existing surface/ recessed steel/ PVC conduit as required.				
a	2 Pair				
4	<b>A/C point</b>				
	<b>S/F 20A SPN MCB industrial socket outlet:</b> Supplying and fixing 20 amps, 240 volts, SPN industrial type, socket outlet, with 2 pole and earth, metal enclosed plug top alongwith 20 amps "C" curve, SP, MCB, in sheet steel enclosure, on surface or in recess, with chained metal cover for the socket out let and complete with connections, testing and commissioning etc. as required.(Make: Legrand/Havells/HPL)				
5	<b>Modular type blanking plate:</b>				
	Supplying and fixing modular blanking plate on the existing modular plate & switch box excluding modular plate as required.(Make: Legrand/Havells/HPL)				
6	<b>Modular boxes, bases &amp; cover plate:</b>				
	Supplying and fixing following size/modules, GI box along with modular base & cover plate for modular switches in recess etc as required.(Make: Legrand/Havells/HPL)				
a	2 module				
b	3 module				
c	4 module				
d	6 module				
e	8 module				
f	12 module				
7	<b>Modular type switch/socket:</b>				

**SECTION XIA****Upgradation of Govt. Ayurveda Dispensary, Kunnathukal,  
Thiruvananthapuram, Kerala state**

S.N	Description	Quantity	Unit	Rate in Rs.	Amount in Rs.
	Supplying and fixing following modular switch/socket on the existing modular plate & switch box including connections but excluding modular plate etc as required. (Make: Legrand/Havells/HPL)				
a	5/6 Amps switch				
b	3 pin 5/6 Amp socket outlet				
c	15/16 Amps switch				
d	6pin 15/16 Amps (universal) socket outlet				
e	Telephone socket outlet				
8	<b>S/F PVC conduit:</b>				
	Supplying and fixing of following sizes of medium class PVC conduit along with accessories in surface/recess including cutting the wall and making good the same in case of recessed conduit as required.(ISI Make)				
a	20 mm				
b	25 mm				
	<b>Installation Testing &amp; Commissioning</b>				
9	<b>ITC Fluorescent fitting directly on surface:</b> Installation, testing and commissioning of pre-wired, fluorescent fitting / compact fluorescent fitting/LED of all types, complete with all accessories and tube etc. directly on ceiling/ wall, including connection with 1.5 sq. mm FR PVC insulated, copper conductor, single core cable and earthing etc. as required.				
10	<b>ITC Ceiling fan/Wall fan:</b> Installation, testing and commissioning of ceiling fan, including wiring the down rods of standard length (upto 30 cm) with 1.5 sq. mm FR PVC insulated, copper conductor, single core cable etc. as required.				
11	Supplying and fixing two module stepped type electronic fan regulator on the existing modular plate switch box including connections but excluding modular plate etc. as required.				

**SECTION XIA****Upgradation of Govt. Ayurveda Dispensary, Kunnathukal,  
Thiruvananthapuram, Kerala state**

S.N	Description	Quantity	Unit	Rate in Rs.	Amount in Rs.
12	<b>LAYING OF CABLES</b>				
	<b>CABLE LAYING</b>				
	Wiring for circuit/ submain wiring alongwith earth wire with the following sizes of FRLS PVC insulated copper conductor, single core cable in surface/ recessed medium class PVC conduit as required.				
a	FROM Mains TO DB				
	2 X 4 sq. mm + 1 X 4 sq. mm earth wire				
13	<b>END TERMINATION</b>				
	Supply and making end termination with brass compression gland, earth clip and aluminium lugs for following size of PVC insulated and PVC sheathed/XLPE aluminium conductor cable fo 1.1KV grade as required.				
	2 X 4 sq. mm + 1 X 4 sq. mm earth wire				
15	<b>S/F of SPN MCB PDB</b>				
	Supplying and fixing following way, single pole and neutral, sheet steel, MCB distribution board, 240 V, on surface/ recess, complete with tinned copper bus bar, neutral bus bar, earth bar, din bar, interconnections, powder painted including earthing etc. as required. (But without MCB/RCCB/Isolator)				
a	6 way Double door, horizontal type				
b	16 way Double door ,horizontal type				
C	12 way Double door ,horizontal type				
16	<b>S/F OF SP MCB</b>				

**SECTION XIA**

**Upgradation of Govt. Ayurveda Dispensary, Kunnathukal,  
Thiruvananthapuram, Kerala state**

S.N	Description	Quantity	Unit	Rate in Rs.	Amount in Rs.
	Supplying and fixing 5 A to 32 A rating, 240/415 V, 10 kA, "C" curve, miniature circuit breaker suitable for inductive load of following poles in the existing MCB DB complete with connections, testing and commissioning etc. as required.				
	6/32 A SP MCB				
17	<b>S/F DP ISOLATOR</b>				
	Supplying and fixing following rating, double pole, (single phase and neutral), 240 volts, ISOLATOR having a sensitivity current upto 100 to 300 milliamperes in the existing MCB DB complete with connections, testing and commissioning etc, as required.(Make: Legrand/Havells/HPL)				
	40 A				
18	<b>S/F DP RCCB</b>				
	Supplying and fixing following rating, double pole, (single phase and neutral), 240 V, residual current circuit breaker (RCCB), having a sensitivity current 30 mA in the existing MCB DB complete with connections, testing and commissioning etc. as required.				
	25 A				
19	<b>EARTHING</b>				
a	Earthing with G.I. earth pipe 4.5 meter long, 40 mm dia including accessories, and providing masonry enclosure with cover plate having locking arrangement and watering pipe etc. with charcoal/ coke and salt as required.				

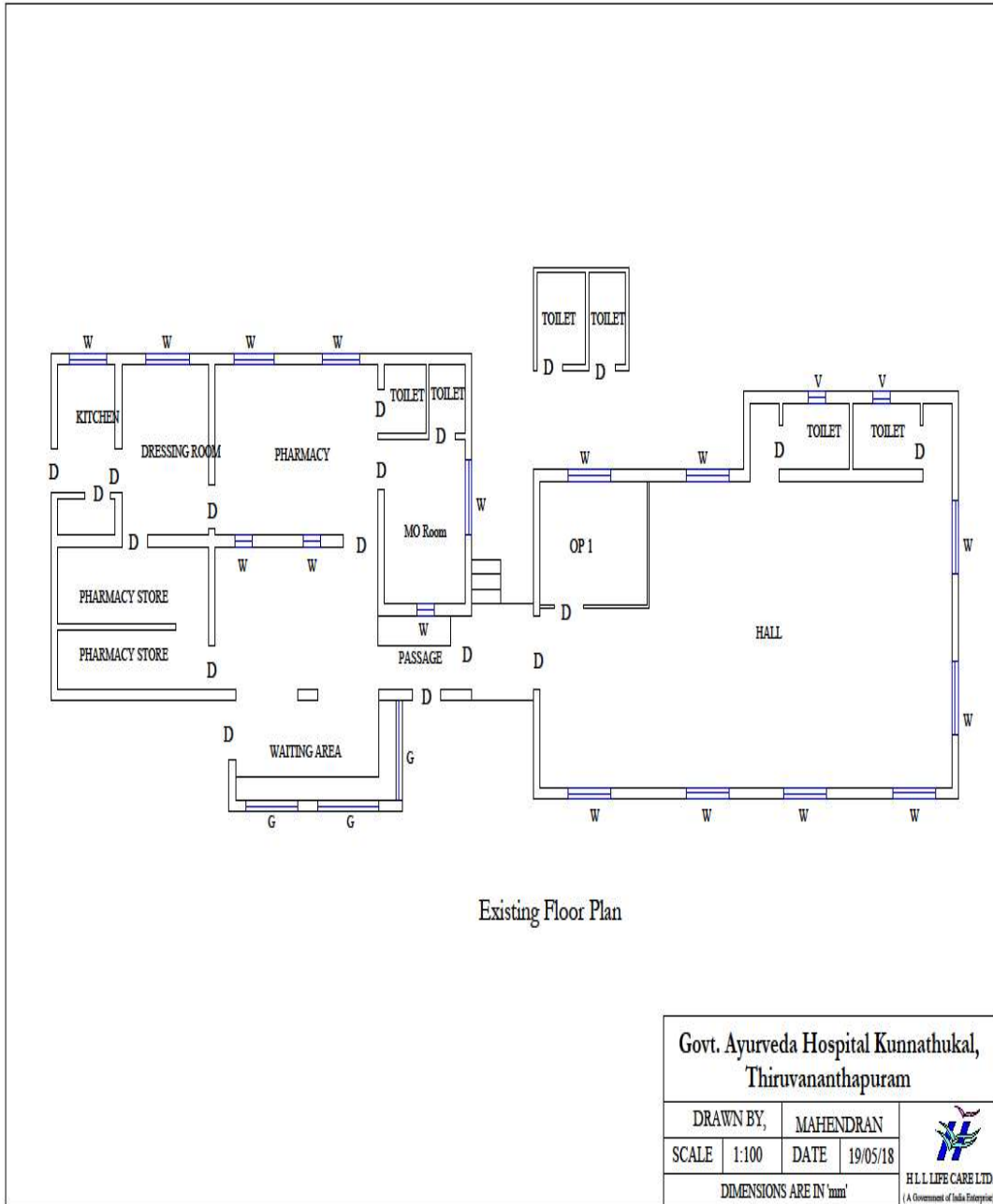


**SECTION XIA****Upgradation of Govt. Ayurveda Dispensary, Kunnathukal,  
Thiruvananthapuram, Kerala state**

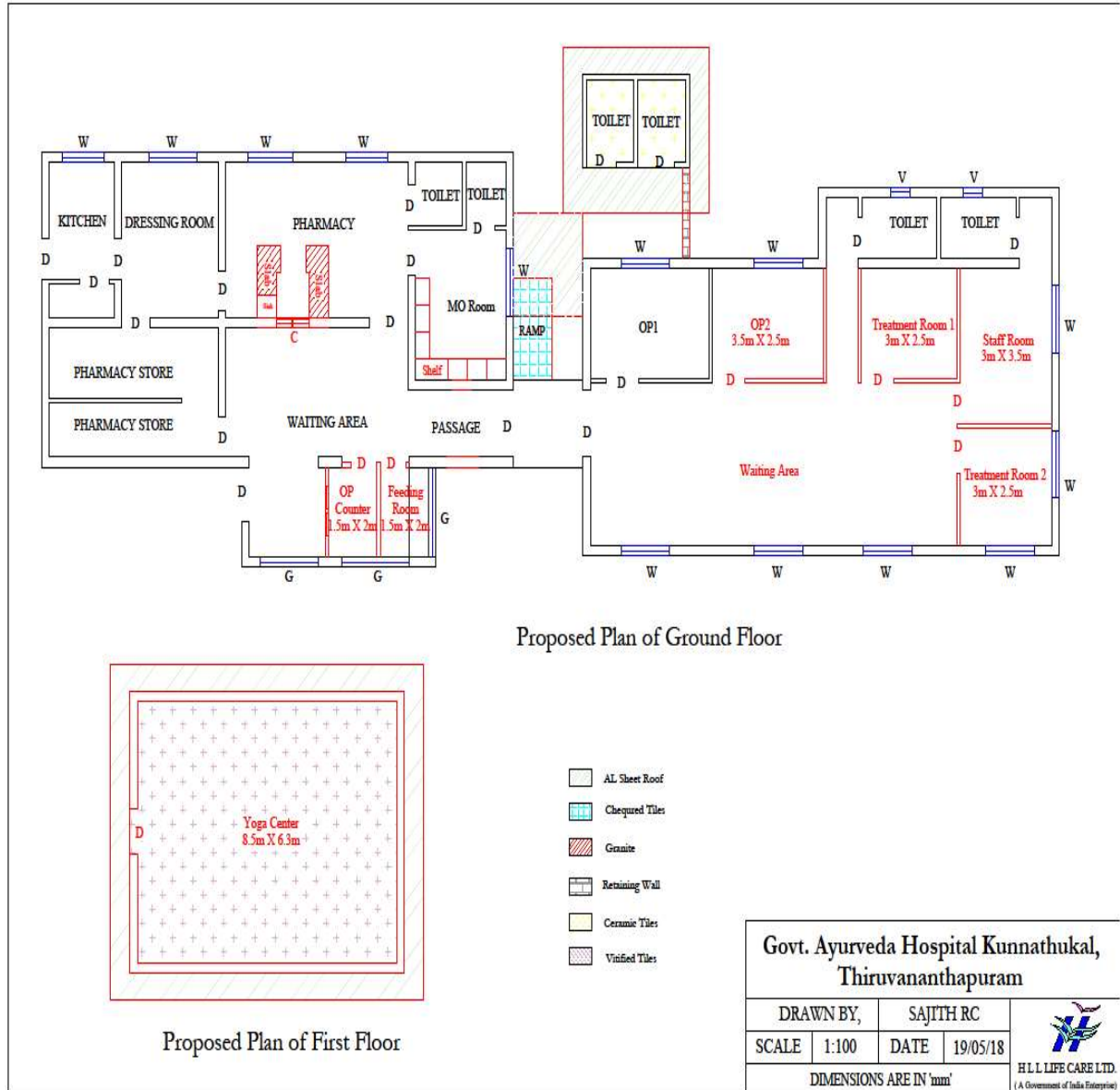
S.N	Description	Quantity	Unit	Rate in Rs.	Amount in Rs.
b	Providing and laying earth connection from earth electrode with 6 SWG dia G.I. Wire in 15 mm dia G.I. pipe from earth electrode including connection with G.I. thimble excavation and re-filling as required.				
<b>NDSR ITEMS</b>					
1.1	Supply of 15W LED tube fitting sleek with decorative end cap, powder coated CRCA steel channel complete with all electrical accessories like electronic ballast, lamp holder, 28W LED lamp etc complete as required. <b>(Philips / Wipro /HAVELLS)</b>				
1.2	Supply and installation of 18 W CFL with its all accessories.[ISI MAKE]				
1.3	Supply and installation of wall fan, white colour, 5 star rated as per BEE complete with blades, casing , wall mounting accessories etc(Make Havells/bajaj/usha/V-guard/crompton)				
1.4	Supply and installation EXHAUST FAN,SHUTTER TYPE white colour, 9" OR 10" star rated as per BEE complete with its all accessories(Make Havells/bajaj/usha/V-guard)				
2	<b>Miscellaneous Items</b>				
2.1	Miscellaneous electrical work, removing of existing conduits and interconnections of light,6A socket/16A socket/A/C point from existitng DB				
3	<b>CABLE SUPPLY</b>				
	Supplying the following PVC insulated and PVC sheathed/XLPE power cable of 1.1 KV grade as per CPWD standards as required. <b>(Make:Havells/ Glostar/Nicco/Finolex/Polycab)</b>				
	2 X 4 sq. mm + 1 X 4 sq. mm earth wire ( 3 Nos. of 4 Sq.mm wire)				

<b><u>SECTION XIA</u></b>					
<b><u>Upgradation of Govt. Ayurveda Dispensary, Kunnathukal, Thiruvananthapuram, Kerala state</u></b>					
S.N	Description	Quantity	Unit	Rate in Rs.	Amount in Rs.
4	Supply and Fixing of following rated , inverter Air conditioner with all the accessories and make, wall mounting and pointing with 4 sq.mm copper wire for neutral and phase. The make of the outdoor unit should have provided with weather proof sheild. AC must be a make of minimum 5 Star. MAKE ( HITACHI)				
	Air conditioner split type 5 Star rated , no special color code, Two ton.( 2 Ton 5 Star Split (RMB524IAEA)				
<b>Sub Total (Electrical Work)</b>					
<b>Total (Civil &amp; Electrical)</b>					
<b>GST @ 18%</b>					
<b>Grand Total(Inclusive of All)</b>					
I agree to complete the work as per the schedule at the rate quoted by me as above.					
Date:			BIDDER		

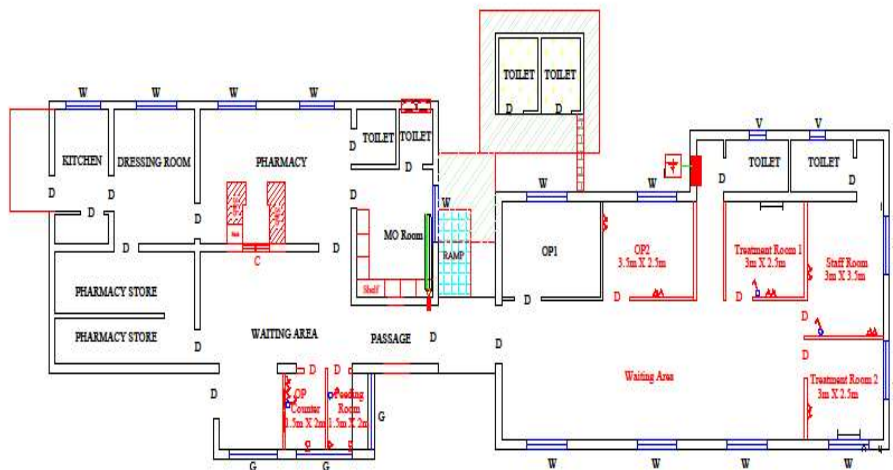
**Drawing- Existing Civil Work**



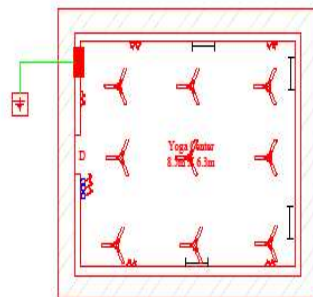
**Drawing- Proposed Civil Work**



**Drawing – Electrical Work**



Proposed Plan of Ground Floor



Proposed Plan of First Floor

- Al. Sheet Roof
- Chajched Tiles
- Granite
- Retaining Wall
- Ceramic Tiles
- Vitrified Tiles

LEGEND OF ITEMS	
	SWITCH
	SOCKET
	FAN
	GRID OF FAN ROOMS
	GRID OF FAN ROOMS FOR AC
	LED LIGHT FIXTURE
	SOCKET WITH SWITCH
	CENTRAL CEILING FAN
	CENTRAL FAN
	RETENTION MARK
	AMBULANCE WITH VAN (PL)
	FIRE ALARM POINT WITH SOUND AND LIGHT SIGNAL
	FIRE ALARM
	FIRE ALARM CONTROL UNIT

Govt. Ayurveda Hospital Kunnathukal, Thiruvananthapuram			
DRAWN BY,	AKHIL		
SCALE	1:100	DATE	19/05/18
DIMENSIONS ARE IN 'mm'			
			 H.L. LIFE CARE LTD <small>(A Government of India Enterprise)</small>