

IFB NO. HLL/AFT-CMO/KL-OPD/CIV&ELE/P-II/2017-18/05, DT. 21.07.2017

**TENDER FOR RENOVATION OF OUTPATIENT  
DEPARTMENT  
(CIVIL AND ELECTRICAL WORKS ON TURNKEY BASIS)**

**FOR**

**PRIMARY HEALTH CENTRES AT KOZHIKODE**

**IFB NO. HLL/AFT-CMO/KL-OPD/CIV&ELE/P-II/2017-18/05, DT. 21.07.2017**



**HLL LIFECARE LIMITED**

(A GOVT. OF INDIA ENTERPRISE)

AKKULAM FACTORY, SREEKARIAM P.O.

THIRUVANANTHAPURAM – 17

Phone +91 471 244 5930, Fax +91 471 244 5935

Email: [hcdcmo@lifecarehll.com](mailto:hcdcmo@lifecarehll.com)

Web: [www.lifecarehll.com](http://www.lifecarehll.com)

**HLL LIFECARE LIMITED**  
**AKKULAM FACTORY, SREEKARIAM P.O. THIRUVANANTHAPURAM - 17**

**TENDER FOR RENOVATION OF OUTPATIENT DEPARTMENT AT PRIMARY HEALTH CENTRES AT KOZHIKODE DISTRICT, KERALA STATE.**

**(CIVIL AND ELECTRICAL WORKS ON TURNKEY BASIS)**

BID REFERENCE : HLL/AFT-CMO/KL-OPD/CIV&ELE/P-II/2017-18/05,  
DT. 21.07.2017

DATE OF COMMENCEMENT  
OF SALE OF BIDDING DOCUMENT : 21.07.2017

LAST DATE FOR SALE OF BIDDING  
DOCUMENT : 31.07.2017 , 11.30 Hrs.

LAST DATE AND TIME FOR  
RECEIPT OF BIDS : 31.07.2017 , 14.00 Hrs.

TIME AND DATE OF OPENING  
OF BIDS : 31.07.2017 , 15.00 Hrs.

PLACE OF OPENING OF BIDS : HLL LIFECARE LIMITED  
AKKULAM FACTORY,  
SREEKARIAM P.O.  
THIRUVANANTHAPURAM – 17  
Phone +91 471 244 5930  
Fax +91 471 244 5935  
Email: [hcdcmo@lifecarehll.com](mailto:hcdcmo@lifecarehll.com)

ADDRESS FOR COMMUNICATION : **Joint General Manager (Mtls)**  
**HLL LIFECARE LIMITED**  
**AKKULAM FACTORY,**  
**SREEKARIAM P.O.**  
**THIRUVANANTHAPURAM - 17**  
**Phone +91 471 244 5930**  
**Fax +91 471 244 5935**  
**Email: [hcdcmo@lifecarehll.com](mailto:hcdcmo@lifecarehll.com)**

**ABSTRACT**

| <b>SECTION No.</b>     | <b>DESCRIPTION</b>                   | <b>PAGE No.</b> |
|------------------------|--------------------------------------|-----------------|
| <b><u>PART A</u></b>   |                                      |                 |
| SECTION I              | INVITATION FOR BIDS (IFB)            | 04              |
| SECTION II             | INSTRUCTION TO BIDDERS (ITB)         | 05              |
| SECTION III            | GENERAL CONDITIONS OF CONTRACT (GCC) | 14              |
| SECTION IV             | SPECIAL CONDITIONS OF CONTRACT (SCC) | 20              |
| SECTION V              | QUALIFICATION CRITERIA               | 22              |
| SECTION VI             | PROFORMA ABOUT THE CONTRACTOR        | 23              |
| SECTION VII            | PERFORMANCE STATEMENT                | 24              |
| SECTION VIII           | INDEMNITY CLAUSE                     | 25              |
| SECTION IX             | DECLARATION                          | 26              |
| <b><u>PART : B</u></b> |                                      |                 |
| SECTION X              | ABSTRACT PRICE SCHEDULE              | 28              |
| SECTION XI             | PRICE SCHEDULE (I)                   | 29              |

**PART – A**

**SECTION I**

**INVITATION FOR BIDS (IFB)**

Sealed and super scribed tenders, under Single Bid system, is invited from the eligible contractors, for execution of Renovation of Outpatient Department in the Primary Health Centre, Edachery at Kozhikode District, The detailed work is given as in the **Price Schedule** to this Tender.

| <b>Sl. No.</b> | <b>Details of PHCs</b>  | <b>EMD Amount (Rs)</b> |
|----------------|-------------------------|------------------------|
| 1              | PHC Edachery, Kozhikode | <b>8,000.00</b>        |

1. Interested eligible Bidders may obtain further information from the **Office of the Joint General Manager (Mtls), HLL Lifecare Ltd, Akkulam Factory, Thiruvananthapuram -17, Kerala**
2. The Tender Document can be downloaded from our Website [www.lifecarehll.com](http://www.lifecarehll.com).
3. Interested eligible bidders may submit their bidding documents at the Office of the **Joint General Manager (Mtls), HLL Lifecare Ltd, Akkulam Factory, Thiruvananthapuram –17** on the specified date and time.
4. All bids must be accompanied by the documents specified herein and must be delivered to **Joint General Manager (Mtls) on or before 31.07.2017, 14.00 Hrs. The Bids will be opened on 31.07.2017, at 15.00 Hrs**, in the presence of the bidders or their duly authorized representatives who wish to attend the bid opening on the specified date and time at HLL's office mentioned above. In the event of the date being declared is a closed holiday for HLL, the due date for submission of bids and opening of bids will be the following working day at the appointed time.

## SECTION II INSTRUCTION TO BIDDERS

### A. INTRODUCTION

#### 1. Eligible Bidders

1.1 Only experienced contractors are eligible to participate in the tender.

The tenderer shall furnish, as part of its tender, relevant details and documents establishing its eligibility to quote and its qualifications to perform the contract if its tender is accepted.

1.2 The documentary evidence needed to establish the tenderer's qualifications shall fulfill the following requirements:

a) The tenderer has the required financial, technical and service capability necessary to perform the contract and, further, it meets the qualification criteria incorporated in the Section V in these documents.

1.3 a) The bidder should have **Minimum 3 years experience in the relevant field (SECTION V)**

b) The Tenderer should have executed satisfactorily at least 3 jobs preferably of similar kind (CIVIL AND ELECTRICAL WORKS) as mentioned in SECTION V – Qualification Criteria

1.4 Bidder submit annual turnover statement for last 3 financial years, each year not less than atleast 15 lakhs, certified by Chartered Accountant.

1.5 The bidders should quote for all the schedules in the Tender, failing which, such bids shall be considered as incomplete and will be summarily rejected.

#### 2. Cost of Bidding

2.1 Cost of bidding shall be completely on the tenderer.

### B. THE BIDDING DOCUMENTS

#### 3. Contents of Bidding Documents

3.1 The work required, bidding procedures and contract terms are prescribed in the Bidding documents. In addition to the Invitation for Bids, the Bidding documents include:

a. Instruction to Bidders (ITB);

- b. General Conditions of Contract (GCC);
- c. Special Conditions of Contract (SCC);
- d. Qualification criteria;
- e. Proforma bout the Contractor
- f. Performance statement
- g. Indemnity Clause
- h. Declaration
- i. Abstract Price Schedule
- j. Price Schedules

- 3.2 The Bidder is expected to examine all instructions, forms, terms and specifications in the Bidding Documents. Failure to furnish all information required by the Bidding Documents or submission of a bid not substantially responsive to the Bidding Documents in every respect will be at the Bidder's risk and may result in rejection of its bid.

#### **4. Clarification of Bidding Documents**

- 4.1 The Bidder, who require any clarification of the Bidding Documents may notify the Company in writing at the Company's mailing address indicated in the Invitation for Bids. The Company will respond in writing to any such request which is received not later than **3 days** prior to the deadline for submission of bids prescribed by the Company. Any such response (relevant) against the clarification of the tenderer shall be notified in our website only.

#### **5. Amendment of Bidding Documents**

- 5.1 At any time prior to the deadline for submission of bids, the Company may, for any reason, whether at its own initiative or in response to a clarification requested by a prospective bidder, modify the Bidding Documents by an amendment.

Those bidders who download the tender documents from our website should furnish the Name and address of the vendor, name of contact person, telephone and Email details immediately by Email to [hcdcmo@lifecarehll.com](mailto:hcdcmo@lifecarehll.com). Any changes pertains to this tender shall be communicated only through our website [www.lifecarehll.com](http://www.lifecarehll.com)

- 5.2 All prospective bidders who have received the Bidding Documents will be notified of the amendment in writing or by cable and will be binding on them.
- 5.3 In order to allow prospective bidders reasonable time in which to take the amendment into account in preparing their bid, the Company may, at its discretion, extend the deadline for the submission of bids

## C. PREPARATION OF BIDS

### 6. Language of Bid

- 6.1 The Bid prepared by the bidder and all correspondence and documents relating to the bid exchanged by the Bidder and the Company, shall be written in the English language. Supporting documents and printed literature furnished by the Bidder may be written in another language provided they are accompanied by an accurate translation of the relevant passages in the English language in which case, for purposes of interpretation of the Bid, the English translation shall govern.

### 7. Documents Comprising the Bid

Following documents and forms are to be included in the technical bid and commercial bid respectively.

#### 7.1 TECHNICAL DOCUMENTS

The technical bid shall consist of the following documents.

- a) **Tender Fee : DD for Rs. 525.00 (inclusive of tax) drawn in favour of HLL Lifecare Limited payable at Thiruvananthapuram** is to be attached towards tender fee.
- b) **EMD/Bid Security for Rs. 8,000/- in the form of Demand Draft from schedule Bank, drawn in favor of HLL Lifecare Limited, payable at Thiruvananthapuram.** The EMD/Bid Security shall be refunded to the non-responsive bidders within 60 days from the date of opening of Bid. The Tender received without EMD will be rejected.
- c) SSI/MSME units interested in availing exemption from payment of Tender Fee & EMD should submit a valid copy of their registration certificate issued by the concerned DIC or NSIC / **Udyog Aadhaar**. But the Party has to provide Security deposit if Tender is awarded to them.
- d) Copy of Balance sheet / Bank Statement for the past two financial years.
- e) Performance statement in the Proforma VII.
- f) Documentary evidence established in accordance with ITB Clause A1 that the Bidder is eligible to bid and is qualified to perform the contract if its bid is accepted;

#### 7.2 PRICE SCHEDULE

Duly filled Bid Form i.e. Price Schedule Abstract and Price Schedules.

#### 7.3 DISTRIBUTION OF WORK IN CASE OF AWARDING WORK TO MORE THAN ONE TENDERER:-

- i. The Company has the right to give the work under this tender to one or more contractors, for any number of site or partially or fully, at Company's own discretion.

- ii. The company reserves the right to distribute the work, site wise, at its discretion to different Tenderers who agree to do the work at the lowest rate accepted. However, the company is not bound to accept the lowest rate quoted by L1 bidder for all works tendered.
- iii. It is specifically made clear that the company reserves right to place the order for the other competent bidders (other than L1 bidder), subject to matching L1 rates.
- iv. Company has chosen to place work Orders with the Matched lowest contractor and when there are more than one such Matched lowest contractor, then the work Orders for the requirement of works will be placed among them at the discretion of the company to get the works executed within the limited time period.
- v. The Matched lowest contractor, on placement of work Order, will be deemed as lowest rate contractor for the purpose of the tender and all provisions of the tender documents applicable to L1 rate tenderer will apply mutatis mutandis to the Matched L1 contractor also.
- vi. If the lowest contractor has failed to execute the required works within the stipulated time, Company will cancel such work orders and on cancellation, Company will place work Orders with the alternate contractor(s) at the risk and cost of the defaulted contractor.
- vii. If the contractor fails to execute the work(s) for any of the Work Orders placed for the similar work(s), at any point of time, either fully or partly, within the stipulated time, Company is at liberty to place work Orders either with other Tenderers ( in ascending order, viz., L2,L3 and so on) at the rates offered by them or with alternate sources and in such cases the defaulted contractor is liable to indemnify Company, WITH OUT ANY PROTEST OR DEMUR, for the difference in cost incurred by Company and the Company is entitled to recover the difference in cost from any amount due/payable to the defaulted supplier.

## **8. Bid Currencies**

8.1 Prices shall be quoted in Indian Rupees.

## **9. Documents establishing bidder's eligibility and qualifications**

9.1 Pursuant to ITB Clause 1, the bidder shall furnish, as part of its bid, documents establishing the bidder's eligibility to bid and its qualifications to perform the Contract.

9.2 The documentary evidence of the Bidder's qualifications to perform the Contract if its bid is accepted, shall establish to the Company's satisfactions.

- (a) that the bidder has the financial and technical capability necessary to perform the Contract and meets the criteria outlined in the qualification requirements specified in Section V. All bids submitted shall include the following information:



Details of experience and past performance of the bidder on items offered and on those of similar nature and details of current contracts in hand and other commitments as per proforma given in Section VII

#### **10. Scope of Documents:**

10.1 For the purpose of the documentary evidence to be furnished pursuant to ITB Clause 9.2 above, the Bidder shall note that the standards for workmanship, material and references to brand names or catalogue numbers, if any, designated by the Company in its Tender schedules are intended to be descriptive only and not restrictive.

#### **11. Period of Validity of Bids**

11.1 Price shall be valid **for One year from the date of opening.**

11.2 In exceptional circumstances, the Company may solicit the bidders consent to an extension of the period of validity. The request and the responses thereto shall be made in writing.

#### **12. Format and Signing of Bid.**

12.1 The bidder shall prepare the bid clearly marking as appropriate

12.2 The bid shall be typed or written in indelible ink and shall be signed by the Bidder or a person or persons duly authorized to bind the Bidder to the Contract. The letter of authorization shall be indicated by written power-of-attorney accompanying the bid. All pages of the bid, except for printed literature, shall be initialed by the person(s) signing the bid.

12.3 Any interlineations, erasures or overwriting shall be valid only if they are initialed by the person or person(s) signing the bid.

#### **D. SUBMISSION OF BIDS**

#### **13. Sealing and Marking of bids**

13.1 The bidders shall seal the **Technical documents** and **Price Schedule** in a single cover, duly written on the envelope as

**“TENDER FOR RENOVATION OF  
OPD AT PRIMARY HEALTH CENTRE, EDACHERY AT KOZHIKODE DISTRICT, .KERALA  
“HLL/AFT-CMO/KL-OPD/CIV&ELE/2017-18/P-II/05, DT. 21.07.2017 ”  
“DO NOT OPEN BEFORE 15.00 Hrs. on 31.07.2017 ”**

13.2 The envelope shall be addressed to the following address:

**Joint General Manager (Materials)**

**HLL Lifecare Limited,  
Akkulam Factory, Sreekaryam P.O. ,  
Thiruvananthapuram -17  
Phone 0471 2445930 / 2442642  
Email : hcscmo@lifecarehll.com**

- (a) If the envelope is not sealed and marked as required, the Company will assume no responsibility for the bid's misplacement or premature opening.
- (b) Bids must be received by the Company at the address specified not later than the date and time specified in the Invitation for Bid. In the event of the specified date for the submission of bids, being declared a holiday for the Company, the bids will be received up to the appointed time on the next working day.
- (c) The Company may, at its discretion, extend this deadline for the submission of bids by amending the bidding documents in which case all rights and obligations of the Company and bidders previously subject to the deadline will thereafter be subject to the deadline as extended.

#### **14. LATE BIDS**

14.1 Any bid received by the Company after the deadline for submission of bids prescribed by the Company, will be rejected and returned unopened to the bidder.

#### **15. MODIFICATION AND WITHDRAWAL OF BIDS**

- 15.1 The bidder may modify or withdraw its bid after the bid submission, provided that written notice of the modification or withdrawal is received by the Company prior to the deadline prescribed for submission of bids.
- 15.2 The bidder's modification or withdrawal notice shall be prepared, sealed, marked and dispatched in accordance with the provisions of ITB Clause 15. A withdrawal notice may also be sent by cable, but followed by a signed confirmation copy, post-marked not later than the deadline for submission of bids.
- 15.3 No bid may be modified subsequent to the deadline for submission of bids.
- 15.4 No bid may be withdrawn in the interval between the deadline for submission of bids and the expiration of the period of bid validity specified by the bidder in the Bid Document.

#### **E. BID OPENING AND EVALUATION**

##### **16. Opening of Bids by Company**

16.1 The Company will open all bids, in the presence of bidder's representatives who choose to attend, at 15.00 Hrs on 26.07.2017 at the following Office

**JOINT GENERAL MANAGER (MATERIALS)**

**HLL Lifecare Limited,  
Akkulam Factory, Sreekaryam P.O. ,  
Thiruvananthapuram -17  
Phone 0471 2445930 / 2442642  
Email : hcddcmo@lifecarehll.com**

- 16.2 In the event of the specified date of bid opening being declared a holiday for the Company, the bids shall be opened at the appointed time and location on the next working day.
- 16.3 The bidder's names, modifications, bid withdrawals and the presence or absence of the requisite documents and such other details as the Company, at its discretion, may consider appropriate will be announced at the opening. No bid shall be rejected at bid opening, except for late bids, which shall be returned unopened to the bidder.
- 16.5 The Company will scrutinize the technical bid for compliance to the conditions and documentation requirement as per the bid document. The bidders will be short-listed on the basis of responsiveness of technical bid & Price bid. The short listed bidders will be informed about the time, date and venue of the price bid opening.

## **17. CLARIFICATION OF BIDS**

- 17.1 During evaluation of bids, the Company may, at its discretion, ask the bidder for a clarification of its bid. The request for clarification and the response shall be in writing and no change in prices or substance of the bid shall be sought, offered or permitted.

## **18 PRELIMINARY EXAMINATION**

- 18.1 The Company will examine the bids to determine whether they are complete, whether any computational errors have been made, whether the documents have been properly signed, and whether the bids are generally in order.
- 18.2 Arithmetical errors will be rectified on the following basis. If there is a discrepancy between the unit price and the total price that is obtained by multiplying the unit price and quantity, the unit price shall prevail and the total price shall be corrected. If there is a discrepancy between words and figures, the amount in words will prevail. If the bidder does not accept the correction of the errors, its bid will be rejected.
- 18.3 The Company may waive any minor informality or non-conformity or irregularity in a bid, which does not constitute a material deviation, provided such a waiver does not prejudice or affect the relative ranking of any bidder.
- 18.4 Prior to the detailed evaluation, pursuant to Clause ITB 21, the Company will determine the substantial responsiveness of each bid to the bidding documents. For purposes of these clauses a substantially responsive bid is one which conforms to all the terms and conditions of the bidding documents without material deviations.

Deviations from or objections or reservations to critical provisions such as those concerning Warranty, Force Majeure, Applicable law and Taxes and Duties will be deemed to be material deviation. The Company's determination of a bid's responsiveness is to be based on the contents of the bid itself without recourse to extrinsic evidence.

- 18.5 If a bid is not substantially responsive, it will be rejected by the Company and may not subsequently be made responsive by the bidder by correction of the non-conformity.

## **19. EVALUATION AND COMPARISON OF BIDS**

- 19.1 The Company will evaluate and compare bids previously determined to be substantially responsive, pursuant to ITB Clause 20.

## **20. CONTACTING THE COMPANY**

- 20.1 No bidder shall contact the Company on any matter relating to its bid, from the time of the bid opening to the time the contract is awarded. If the bidder wishes to bring additional information to the notice of the Company it should do so in writing.
- 20.2 Any effort by a bidder to influence the Company in its decisions on bid evaluation, bid comparison, or selection may result in the rejection of the bidders bid.

## **F. AWARD OF CONTRACT**

### **21. POST QUALIFICATION**

- 21.1 The determination will take into account the bidders financial, technical capabilities. It will be based upon an examination of the documentary evidence of the bidder's qualifications submitted by the bidder, pursuant to ITB Clause 1 as well as such other information as the Company deems necessary and appropriate.
- 21.2 An affirmative determination will be a prerequisite for award of the contract to the bidder. A negative determination will result in rejection of the bidders bid, in which event the Company will proceed to the next lowest evaluated bid to make a similar determination of that bidder's capabilities to perform satisfactorily.

### **22. AWARD CRITERIA**

- 22.1 Subject to ITB Clause 7.3, the Company will award the contract to the successful bidder whose bid has been determined to be substantially responsive and as the lowest evaluated bid, provided further that the bidder is determined to be qualified to perform the contract satisfactorily.

### **23. COMPANY'S RIGHT TO VARY QUANTITIES AT TIME OF AWARD**

- 23.1 The Company reserves the right at the time of award of contract to increase or

decrease the quantity of materials and services originally specified in the bid document without any change in unit price or other terms and conditions within the bid validity period.

**24. COMPANY'S RIGHT TO ACCEPT ANY BID AND TO REJECT ANY OR ALL BIDS**

- 24.1 The Company reserves the right to accept or reject any bid, and to annul the bidding process and reject all bids at any time prior to award of Contract, without thereby incurring any liability to the affected bidder or bidders.

**25. NOTIFICATION OF AWARD**

- 25.1 Prior to the expiration of the period of bid validity, the Company will notify the successful bidder in writing by registered letter or by mail, to be confirmed, that its bid has been accepted.
- 25.2 The notification of award will bind the successful bidder to enter into a detailed agreement with the Company within 10 days from the date of notification of award.

## SECTION III GENERAL CONDITIONS OF CONTRACT

### 1. DEFINITIONS

1.1 In this contract the following terms shall be interpreted as indicated:

- (a) “The Contract” means the agreement entered into between the Company and the Contractor as recorded in the Contract Form signed by the parties, including all the attachments and appendices thereto and all documents incorporated by reference therein;
- (b) “The Contract Price” means the price payable to the Contractor under the Contract for the full and proper performance of its contractual obligations;
- (c) “The Materials” means all the products and/or other materials which the Contractor is required to be used in the work under the Contract;
- (d) “Services” means services ancillary to the works, other incidental services, such as installation, commissioning, provision of technical assistance, and other obligations of the Contractor covered under the contract.
- (e) “GCC” means the General Conditions of Contract contained in this section.
- (f) “SCC” means the Special Conditions of Contract.
- (g) “The Company” means the Organization contracting the work, as named in SCC;
- (h) “The Contractor” means the individual or firm undertaking the work / Service under this Contract;
- (i) “Day” means calendar day.
- (j) “Handing over period” means the period applicable upto completion of work and testing by the contractor at the required location mentioned in service purchase order and accepted by the Company.
- (k) “Earnest Money Deposit” (EMD) means Bid Security / monetary or financial guarantee to be furnished by a tenderer along with its tender”.

### 2. APPLICATION

2.1 These General Conditions shall apply to the extent that they are not superseded by provisions in other parts of the Contract.

### **3. STANDARDS**

- 3.1 The Work executed under this Contract shall conform to the standard requirements mentioned in the schedule.

### **4. USE OF CONTRACT DOCUMENTS AND INFORMATION**

- 4.1 The Contractor shall not, without the Company's prior written consent, disclose the Contract, or any provision thereof, or any specification, plan, drawing, pattern, sample or information furnished by or on behalf of the Company in connection therewith, to any person other than a person employed by the Contractor in performance of the Contract. Disclosure to any such employed person shall be made in confidence and shall extend only so far as may be necessary for purposes of such performance.
- 4.2 The Contractor shall not, without the Company's prior written consent, make use of any document or information enumerated in GCC Clause 4.1 except for purposes of performing the Contract.
- 4.3 Any document, other than the Contract itself, enumerated in GCC clause 4.1 shall remain the property of the Company and shall be returned (in all copies) to the Company on completion of the contractor's performance under the Contract if so required by the Company.

### **5. INSPECTION AND TESTS**

- 5.1 The Company or its representative shall have the right to inspect and/or to test the materials to confirm their conformity to the Contract at no extra cost of the Company. The Special conditions of Contract and/or the Technical Specifications shall specify what inspections and tests the Company requires and where they are to be conducted. The Company shall notify the Contractor in writing of the identity of any representatives retained for these purposes.
- 5.2 The inspections and test may be conducted on the premises, at point of completion and/or at the time of handing over the execution. The Contractor or its subcontractor(s), all reasonable facilities and assistance shall be extended to the inspectors at no charge to the Company.
- 5.3 Should any inspected or tested materials/work fail to meet with the schedule requirement, the Company may reject them and the Contractor shall either replace the rejected materials or make all alternations necessary to meet schedule requirements free of cost to the Company.
- 5.4 The Company's right to inspect, test and, where necessary, reject the materials/work at site shall in no way be limited or waived by reason of the Materials having previously been inspected, tested and passed by the Company or its representative.

## 6 INCIDENTAL SERVICES

- 6.1 The contractor may be required to provide any or all of the services with respect to this tender, including additional services, if any, specified in SCC:

## 7. WARRANTY

- 7.1 The Contractor warrants that the Materials used under this Contract are new, unused, of the most recent or current models and incorporate all recent improvements in design and materials unless provided otherwise in the Contract. The contractor further warrants that the Materials supplied under this Contract shall have no defect arising from design, materials or workmanship (except when the design and/or material is required by the Company's specifications) or from any act or omission of the Contractor, that may develop under normal use of the supplied Materials in conditions obtaining in the state/country of final destination.
- 7.2 This warranty shall remain **valid for one year** after work completion handing over and accepted as indicated in the Contract.
- 7.3 The Company shall promptly notify the contractor in writing of any claims arising under this warranty.
- 7.4 Upon receipt of such notice, the Contractor shall, within the period specified in SCC and with all reasonable speed, repair or replace the defective Materials or parts thereof, without cost to the Company
- 7.5 If the Contractor, having been notified, fails to remedy the defect(s) within the period specified in SCC within a reasonable period, the Company may proceed to take such remedial action as may be necessary, at the Contractor's risk and expense and without prejudice to any other rights which the Company may have against the Contractor under the contract.

## 8. PAYMENT

- 8.1 The method and conditions of payment to be made to the Contractor under the Contract shall be specified in the Special Conditions of Contract.
- 8.2 Payment shall be made in Indian Rupees

## 9. PRICES

- 9.1 Prices charged by the Contractor for Work/Services performed under the Contract shall not vary from the prices quoted/agreed by the Contractor in its bid, with the exception of any prices adjustments authorized in the special Conditions of Contract or in the Company's request for bid validity extensions, as the case may be.



## **10. CONTRACT AMENDMENTS**

10.1 Subject to GCC Clause 17, no variation in or modification of the terms of the Contract shall be made except by written amendment signed by the parties.

## **11. ASSIGNMENT**

11.1 The Contractor shall not assign, in whole or in part, its obligations to perform under the contract, except with the Company's prior written consent.

## **12. SUBCONTRACTS**

12.1 The supplier shall notify the Company in writing of all subcontracts awarded under the contract if not already specified in his bid. Such notification, in his original bid or later, shall not relieve the Supplier from any liability or obligation under the contract.

## **13. LIQUIDATED DAMAGES**

13.1 If the Contractor fails to perform the contract/services within the period(s) specified in the Contract, the Company shall, without prejudice to its other remedies under the Contract, deduct from the Contract Price, as liquidated damages, a sum equivalent to the percentage specified in SCC of the delivered price of the delayed unperformed contract/Services for each week or part thereof of delay until actual handing over or performance, up to a maximum deduction of the percentage specified in the SCC if any. Once the maximum is reached, the Company may consider termination of the Contract.

## **14. TERMINATION BY DEFAULT**

14.1 The Company may, without prejudice to any other remedy for breach of contract, by written notice of default sent to the contractor, terminate the Contract in whole or part;  
(a) if the Contractor fails to complete any or all of the work within the time period(s) specified in the Contract, or within any extension thereof granted by the Company,  
or

(b) if the Contractor fails to perform any other obligation(s) under the contract.

14.2 In the event the Company terminates the Contract in whole or in part, the Company may execute, upon such terms and in such manner as it deems appropriate, Work or Services similar to those unperformed, and the Contractor shall be liable to the Company for any excess costs for such similar Works. However, the Contractor shall continue the performance of the Contract to the extent not terminated.

## **15. FORCE MAJEURE**

15.1 For purposes of this Clause "Force Majeure" means an event beyond the control of the Contractor and not involving the Contractor's fault or negligence and not foreseeable. Such events may include, but are not limited to, acts of the Company either in its

sovereign or contractual capacity, wars or revolutions, fires, floods, epidemics, quarantine restrictions and freight embargoes.

- 15.2 If a Force Majeure situation arises, the Contractor shall promptly notify the Company in writing of such conditions and the cause thereof. Unless otherwise directed by the Company in writing, the Contractor shall continue to perform its obligations under the Contract as far as is reasonably practical, and shall seek all reasonable alternative means for performance not prevented by the force majeure event.

## **16. TERMINATION FOR INSOLVENCY**

- 16.1 The Company may at any time terminate the Contract by giving written notice to the Contractor, if the Contractor becomes bankrupt or otherwise insolvent. In this event, termination will be without compensation to the Contractor, provided that such termination will not prejudice or affect any right of action or remedy, which has accrued or will accrue thereafter to the Company.

## **17. RESOLUTION OF DISPUTES/ ARBITRATION**

- 17.1 The Company and the contractor shall make every effort to resolve amicably by direct informal negotiation any disagreement or dispute arising between them under or in connection with the Contract.
- 17.2 If, after thirty (30) days from the commencement of such informal negotiations, the Company and the Contractor have been unable to resolve amicably a Contract dispute, either party may require that the dispute be referred for resolution to the formal mechanisms specified in the General Conditions of Contract (Arbitration Clause 20.3). These mechanisms may include, but or not limited to, conciliation mediated by a third Party, adjudication in an agreed national forum, and national arbitration.
- 17.3 If, HLL and the Contractor have been unable to resolve amicably a Contract dispute, such dispute or disagreement shall be settled in accordance with the Arbitration and Conciliation Act 1996. The Arbitral Tribunal shall consist of Sole Arbitrator, to be chosen from the Panel of Arbitrators notified by the Institute of Engineers (India), Kerala Chapter. Venue of the Arbitration shall be Thiruvananthapuram. Language of arbitration shall be English. Award of the Sole Arbitrator will be final and binding upon the Parties.
- 17.4 Subject to above mentioned Arbitration clause the jurisdiction of any disputes, suits and proceeding arising out of the tender shall be only in the court of Thiruvananthapuram.

## **18. GOVERNING LANGUAGE**

- 18.1 The contract shall be written in English language. English language version of the Contract shall govern its interpretation. All correspondence and documents pertaining to

the Contract which are exchanged by the parties shall be written in the same language.

**19. APPLICABLE LAW**

19.1 The Contract shall be interpreted in accordance with the laws of the Union of India.

**20. NOTICES**

20.1 Any notice given by one party to the other pursuant to this Contract shall be sent to other party in writing or by cable and confirmed in writing to the other Party's address specified in Special Conditions of Contract.

20.2 A notice shall be effective when delivered or on the notice's effective date, whichever is later.

**21. TAXES AND DUTIES**

21.1 Contractors shall be entirely responsible for all taxes, licenses, statutory levies etc., incurred until handing over of the contracted site / service to the Company.

## SECTION IV

# SPECIAL CONDITIONS OF CONTRACT

The following Special Conditions of Contract shall supplement the General Conditions of Contract. Whenever there is a conflict, the provisions herein shall prevail over those in the General Conditions of contract. The Corresponding clause number of the General Conditions is indicated in parentheses.

1. The work shall be completed **within 15 Days** from the date of receipt of firm Work Order / L.O.I.
2. The contractor may inspect the site at Kerala before quoting the work and any clarification regarding clarification on site and other tender related queries shall be clarified with HLL in the address/phone/email provided in the document.
3. During the execution of the work the contractor or authorized representative should be present at site.
4. Statutory deduction like Income tax, ESI, PF etc will be deducted from the Contractor's bill as per the statutory rules.
5. Security deposit: 5% of executed value shall be deducted from the each bill and shall be released after defect liability period of ONE year.
6. Bidder shall quote for all the schedules in the tender, if any schedule is not quoted, then the bidder will be treated as non responsive.
7. Payment shall be released in two parts - 50% of the total value of work may be released upon the completion of 60% of the work and the final payment (balance 50%) shall be made after successful completion of the total work. The second and final payment shall be released only after clearing all the debris/balance materials from the site and also as per the Joint Measurement taken on the actual work executed. The bills are to be certified by the following official from HLL.
  - a) Electrical Engineer, CMO, Chennai
  - b) Project Engineer (Civil), CMO, Chennai.

Countersigned by any one of the following Official from HLL

- a) Business Manager (Projects & Services), CMO, Chennai
  - b) Deputy General Manager (MKTG), CMO, Chennai
8. All the materials and tools required for the work shall be procured by the contractor and brought to the site to complete the work in the time frame. Entry of men/ materials should be done through the security gate only and the details of the same shall be recorded in the register kept at the security office and the copy of details shall be submitted to the Projects

in-charge. All the material brought to the work shall be as per the schedule and samples of materials shall be handed to the project in-charge.

9. The contractor has to arrange all the necessary insurance coverage for the materials/ machines / work men deployed by him at his own cost.
10. Measurement is to be recorded in each stage of the work and the payment will be made on actual measurement of the work as per the order.
11. If the Contractor fails to execute any or all of the work or perform the Services within the time period(s) specified in the Tender/Purchase Order / Work order, the HLL shall, without prejudice to its other remedies under the Contract, deduct from the Contract Price, as penalty, a sum equivalent to the percentage specified in the various terms and conditions of the contract.
12. A delay by the Contractor in the performance of its contract obligations shall render the Contractor liable to the imposition of penalty pursuant to this tender/Work Order/contract, unless an extension of time is agreed upon pursuant to agreement/ Work Order without the application of liquidated damages.
13. Penalty shall be imposed as per the company rules for any delay committed by the contractor in completing the work as per the order. (Ref. Clause.16 - LIQUIDATED DAMAGES)
14. Deleted

## **15. CONTRACT AMENDMENTS**

No variation in or modification of the terms of the Contract shall be made except by written amendment signed by the parties.

## **15. ASSIGNMENT**

The Contractor shall not assign, in whole or in part, its obligations to perform under the contract, except with the HLL's prior written consent.

## **16. LIQUIDATED DAMAGES**

If the Contractor fails to perform the Services within the period(s) specified in the Contract, the HLL shall, without prejudice to its other remedies under the Contract, deduct from the Contract Price, as liquidated damages, a sum equivalent to 2.5 percentage of the value of the delayed Work or unperformed Services for each week or part thereof of delay until actual completion of performance, up to a maximum deduction of 15 percentage. Once the maximum is reached, the HLL may consider termination of the Contract.

## SECTION V QUALIFICATION CRITERIA

**(Referred to in Clause 1 of ITB Eligible Bidders)**

**A) For Civil**

- 1) The bidder should have **Minimum 3 years experience in the relevant field.**
- 2) The Tenderer should have executed satisfactorily at least 3 jobs preferably of similar kind in the last 3 years, each contract valued atleast Rs. 5 Lakhs.

**B) For Electrical**

- 1) The bidder should have **Minimum 3 years experience in the relevant field.**
- 2) The Tenderer should have executed satisfactorily at least 3 jobs preferably of similar kind in the last 3 years, each contract valued atleast Rs. 5 Lakhs.

**The bidder should fulfil all the mentioned criteria and proof of such document shall be submitted long with the bid, failing which bid will be treated as non-responsive.**

**SECTION VI**

**PROFORMA ABOUT THE CONTRACTOR**

**HLL/AFT-CMO/KL-OPD/CIV&ELE/P-II/2017-18/05, DT. 21.07.2017**

**(Please attach detailed proforma incorporating the information given below)**

Tender No.....

DATE OF OPENING.....

NAME OF THE TENDERER:.....

1. Name & Full address of the Contractor:

- (a) PAN No
- (b) GST No \*\*\*\*\*

**(specify whether registered with Kerala State. Attach relevant copies as proof of evidence)**

- (a) Any other details
- (b) Specify whether SSI / MSME unit

- 2. (a) Telephone No. Office/Personal
- (b) Fax No. Office/Personal
- (c) e-mail address

3. Details of Staff:

- a) technical :
- b) skilled :
- c) unskilled :

**SEAL OF THE TENDERER**

**SIGNATURE  
NAME AND ADDRESS OF TENDERER**

**SECTION VII**

**PROFORMA FOR PERFORMANCE STATEMENT**

Proforma for Performance Statement (for a period of last 3 years)

**HLL/AFT-CMO/KL-OPD/CIV&ELE/P-II/2017-18/05, DT. 21.07.2017**

Name of the Tenderer:.....

Name & Address of the Tenderer / Service Provider:.....

.....

| Order placed by<br>(Full Address of Company / Consignee) | Order No. and Date | Description and quantity of ordered work and service | Value of order | Date of Completion of Contract |        | Remarks indicating reasons for delay, if any | Have the works been satisfactorily maintained?<br><br>(Attach a documentary proof) |
|--|--------------------|--|----------------|--------------------------------|--------|--|--|
|  |                    |  |                | As per Contract                | Actual |  |  |
|  |                    |  |                |                                |        |  |  |
|  |                    |  |                |                                |        |  |  |
|  |                    |  |                |                                |        |  |  |

---

We hereby certify that if at any time, information furnished by us is proved to be false or incorrect, we are liable for any action as deemed fit by the Company in addition to forfeiture of earnest money.

Signature and Seal of the Bidder .....

.....



**SECTION VIII**

**HLL LIFECARE LIMITED**

**Akkulam Factory**

**THIRUVANANTHAPURAM-695017**

**HLL/AFT-CMO/KL-OPD/CIV&ELE/P-II2017-18/05, DT. 21.07.2017**

**INDEMINITY CLAUSE**

If the contractor fails to execute the order within the time prescribed for the handing over of works ordered or violates or infringes the existing rates as agreed to as mentioned in the work order, the contractor shall and will indemnify the company against all losses or damages whatsoever to be incurred or sustained including the legal cost or expenses incurred by the company by reason of non-handing over of works at agreed quantity and rate with in the time specified in the work order. The company will initiate legal action if the contractor fails to execute the work order as per the schedule in the work order for the actual loss suffered. No quantity tolerance will be permitted in this regard unless otherwise prior approval is taken by the company before executing any excess quantity and shall be at the risk of the contractor. Responsiveness of the Bid shall be at the discretion of HLL.

The contractor shall have no right to change the quantity stipulated in the work order.

Bid pronounced Non Responsive by HLL shall be summarily rejected.

The decision of HLL will be final and no correspondence of this shall be entertained.

We have read and understood the above conditions and agree to abide by the same.

**PLACE:**

**NAME AND SIGNATURE OF THE TENDERER**

**DATE:**

**(WITH OFFICE SEAL)**

**SECTION IX**

**HLL LIFECARE LIMITED**

**Akkulam Factory  
THIRUVANANTHAPURAM-695017**

**HLL/AFT-CMO/KL-OPD/CIV&ELE/P-II2017-18/05, DT. 21.07.2017**

**DECLARATION**

I / WE, The Bidder undertake, we shall execute, within the purview of the contract, all the works and activities includes; transportation, loading, unloading and other technical work for the installation of the equipment at the designated site as per the schedule/contract /work order, at **Kerala**.

We confirm having read and understood all the schedule requirements, instructions, forms, terms and conditions and other requirements of the above tender (both expressed and implied) in full and that we agree to abide by all without any deviation.

**SEAL OF THE TENDERER**

**SIGNATURE  
NAME AND ADDRESS OF TENDERER**

PART : B

SECTION VIII ABSTRACT PRICE SCHEDULE

SECTION IX PRICE SCHEDULE

**SECTION X**

**HLL LIFECARE LIMITED**  
**AKKULAM FACTORY, THIRUVANANTHAPURAM-695017**

**RENOVATION OF OPD AT PRIMARY HEALTH CENTRE, EDACHERY AT KOZHIKODE**  
**DISTRICT, .KERALA**

**(CIVIL AND ELECTRICAL WORKS ON TURNKEY BASIS)**

**ABSTRACT PRICE BID**

| Site. No.        | Details of Hospital | Renovation of    | Amount Quoted (Rs) |
|------------------|---------------------|------------------|--------------------|
| 1 (a)            | Edachery            | Civil works      |                    |
| 1 (b)            |                     | Electrical works |                    |
| <b>Total Rs:</b> |                     |                  |                    |

**Total words in Rupees:** \_\_\_\_\_

**Bidder shall clearly mention whether the GST included or excluded with % in the price bid. If specific indication of GST is not mentioned, then their quoted rate will be treated as inclusive of GST.**

**Bidder has to quote as per the Make/Brand specified in the BOQ, proposed to use for the project, and has to marks the Make/Brand in the quote / price schedule.**

**SEAL OF THE TENDERER**

**Date:**

**SIGNATURE**  
**NAME AND ADDRESS OF TENDERER**

**SECTION XI**

**HLL LIFECARE LIMITED**

**AKKULAM FACTORY, THIRUVANANTHAPURAM-695017**

**Ph: 0471 244 5930 /244 2642**

**hcdcmo@lifecarehll.com**

**RENOVATION OF OPD AT PRIMARY HEALTH CENTRE, EDACHERY AT KOZHIKODE**  
**DISTRICT, .KERALA**

**(CIVIL WORKS)**

**PRICE SCHEDULE (1a) - EDACHERY, KOZHIKODE**

| S.No              | DESCRIPTION   | QTY  | UNIT   | RATE | AMOUNT |
|-------------------|---|------|--------|------|--------|
| <b>EARTH WORK</b> |   |      |        |      |        |
|                   | <p>"Excavate foundation in all kinds of soil including soft rock except hard rock requiring blasting part return and fill in foundation and basement in layers not exceeding 15cm in depth including watering , breaking clods and consolidating, disposing and spreading surplus earth within the site upto 1.5m depth.(No extra shall be payable for working space)</p> <p>Tenderer to ensure proper dewatering and shoring methods to ensure all time dry condition. Any damages of sides of foundation or collapsing of soil from sides due to excessive water seepage or surface runoff or any other cause have to be replaced with quarry dust or Malaimann at no extra cost."</p>  | 5.00 | M.CUBE |      |        |
|                   | <p>Filling &amp; compacting available excavated earth including watering and rolling ,at OMC using Vibratory power roller of 8 or 10 ton static weight and compacting to achieve at least 95% of standard proctor density</p> <p>(The compacted fill volume assessed based on prelevels and post levels of ground prior to commencement and after completion of compacted fill as approved.) The rate should included removal of top loose soil, vegetation, roots, shrubs etc including disposal of the same away from site and compacting the original ground at OMC to acheive 95% of proctor compaction. Rate is inclusive of necessary head load required to fill around the building or other places, loading, transporting, unloading and de watering etc., all complete as per IS-2720 (Part VII) .</p> <p>The rate shall above include cost of necessary men/women, material, equipment, loading, transportation and unloading and filling all complete as directed.</p> | 0    | M.CUBE |      |        |

| S.No                   | DESCRIPTION   | QTY  | UNIT   | RATE | AMOUNT |
|------------------------|---|------|--------|------|--------|
|                        | Supplying and filling in foundation with river sand in layers of 150mm including watering and consolidating all complete as directed by Architect/Client  | 2.00 | M.CUBE |      |        |
| <b>CEMENT CONCRETE</b> |   |      |        |      |        |
|                        | Cement concrete 1:5:10 (1 cement ,5 sand , 10 hard blue granite stone metal 40mm and down gauge) laid in layers not exceeding 15cm each in depth and well consolidated in foundation/levelling course including necessary shuttering , in steps, in floors, etc . all complete as directed.   |      | M.CUBE |      |        |
|                        | Cement concrete 1:4:8 (1 cement ,4 sand , 8 hard blue granite stone metal 40mm and down gauge in layers not exceeding 15 cms in depth well consolidated in foundation and levelling course under floors including necessary shuttering, in steps etc all complete as directed.  | 3.00 | M.CUBE |      |        |
| <b>R.C.C.WORK</b>      |   |      |        |      |        |
|                        | "RCC M20 (Design Mix) using hard blue granite metal 20mm and down gauge including centering, shuttering, curing etc., complete but excluding cost of reinforcement<br><br>Note: Polythene sheet shall be provided under the slabs."   |      |        |      |        |
|                        | In lintels, bands and bed blocks at all levels.   | 2.00 | M.CUBE |      |        |
|                        | In Suspended roof slab of required thicknes   |      |        |      |        |
|                        | In Ground Floor   |      | M.CUBE |      |        |
|                        | "High Yield Strength Deformed bars in all RCC items & floorings<br>General Note: Sizes of RCC elements shown in the drawing are only indicative and subject to change .No extra shall be payable on this account. Any change in size of concrete elements resulting in change of area of shuttering due to change in quantity of concrete shall also not be payable"" | 0.10 | M.T    |      |        |
| <b>MASONRY WORK</b>    |   |      |        |      |        |
|                        | Brickwork of locally available best quality table moulded bricks of not less than 50kg/sq.cm crushing strength in cement mortar 1:5 (1 cement,5 sand) in foundation and plinth. No extra payment will be paid for any shape or size,turnings, fins, etc unless otherwise specified seperately.  | 1.00 | M.CUBE |      |        |
|                        | Random rubble masonry with hard stone in foundation and plinth including levelling up with cement concrete 1:6:12 (1 cement : 6 coarse sand : 12 graded stone aggregate 20 mm nominal size) upto plinth level with : Cement mortar 1:6 (1 cement : 6 coarse sand)   | 2.00 | M.CUBE |      |        |

| S.No            | DESCRIPTION   | QTY   | UNIT | RATE | AMOUNT |
|-----------------|---|-------|------|------|--------|
|                 | Half brickwork with locally available best quality table moulded bricks of not less than 50kg/sq.cm crushing strength in CM 1:3 (1 cement 3 sand ) and reinforced with two numbers of 6mm dia. M.S rods at every fourth course embedded in cement mortar 1:4 for partitions.  |       |      |      |        |
|                 | In Ground Floor   | 20.00 | M.SQ |      |        |
| <b>FLOORING</b> |   |       |      |      |        |
|                 | Providing & laying first class full body vitrified ceramic tile of make Kajaria/ Restile/Johnson or equivalent of size 600mmx600mmx 9.5mm or approved size of approved colour (matt finish) in flooring using spacer of required size (2mm-4mm) from endura or equivalent over a bed of cement mortar 1:4 of required thickness to match finished floor level mentioned and to match the neighbouring floor finish and jointed with epoxy grout of approved shade from Bal Endura or equivalent brand all complete as directed.(Basic cost of tile - Rs.85/sft).Any difference in basic price and OHP at the time of approval shall be adjusted for the laid area.No extra shall be payable for forming any pattern in the flooring like border, cut tiles,etc. | 6.00  | M.SQ |      |        |
|                 | Providing and laying 600mm x 600mm or required size from Kajaria/ Restile/Johnson glazed tiles of plain series(Satin finish) in dado set in CM 1:3 with joints so as to form a true & even surface and joints finished neatly with white cement mixed with matching pigments all complete as directed. (Rate should include base plastering with CM 1:5 of required thickness.)<br><br>The rate shall include cost of providing 6mmx6mm groove in the plastering at top of the tile all complete as directed.(Basic cost of tile - Rs.85/sft).Any difference in basic price and OHP at the time of approval shall be adjusted for the laid area.No extra shall be payable for forming any pattern like border, etc.   | 1.00  | M.SQ |      |        |
|                 | Providing and fixing 1st quality ceramic glazed floor tiles conforming to IS : 15622 (thickness to be specified by the manufacturer ) of approved make in all colours, shades except burgundy, bottle green, black of any size as approved by Engineer-in-Charge in skirting, risers of steps and dados over 12 mm thick bed of cement Mortar 1:3 (1 cement: 3 coarse sand) and jointing with grey cement slurry @ 3.3kg per sqm including pointing in white cement mixed with pigment of matching shade complete.  | 0.00  | M.SQ |      |        |
|                 | Providing and laying 18mm thick machine cut and polished Marble slabs (Agaria White) of approved quality ,size and shade over a bed of minimum 20mm thick CM 1:4 on parapet tops, cill tops, planter boxes, door jamps etc including polishing on all exposed sides and rounding off all edges, including providing grooves to required profile all complete as directed.(Basic cost of Granite - Rs.180/sft).Any difference in basic price and OHP at the time of approval shall be adjusted for the laid area.  | 0.00  | M.SQ |      |        |

| S.No                 | DESCRIPTION   | QTY     | UNIT | RATE | AMOUNT |
|----------------------|---|---------|------|------|--------|
| <b>STEEL WORK</b>    |   |         |      |      |        |
|                      | Providing and fixing stainless steel ( Grade 304) railing made of Hollow tubes, channels, plates etc., including welding, grinding, buffing, polishing and making curvature (wherever required) and fitting the same with necessary stainless steel nuts and bolts complete, i/c fixing the railing with necessary accessories & stainless steel dash fasteners , stainless steel bolts etc., of required size, on the top of the floor or the side of waist slab with suitable arrangement as per approval of Engineer-in charge,<br>(for payment purpose only weight of stainless steel members shall be considered excluding fixing accessories such as nuts, bolts,fasteners etc.). |         | KG   |      |        |
|                      | Structural steel work riveted, bolted or welded in built up sections, trusses and framed work, including cutting, hoisting, fixing in position and applying a priming coat of approved steel primer all complete.   | 1316.00 | KG   |      |        |
|                      | Providing and fixing in position collapsible steel shutters with vertical channels 20x10x2 mm and braced with flat iron diagonals 20x5 mm size, with top and bottom rail of T-iron 40x40x6 mm, with 40 mm dia steel pulleys, complete with bolts, nuts, locking arrangement, stoppers, handles, including applying a priming coat of approved steel primer.   |         | M.SQ |      |        |
| <b>ALUMINUM WORK</b> |   |         |      |      |        |
|                      | Providing, fabricating and fixing in position colour anodised aluminium sections of various profiles including louvers, subframes, etc in roof monitor or in other places made out of approved manufacturer section all complete as directed. The rate should also includes providing PU sealent in both inside and outside   | 0.04    | M.T  |      |        |
|                      | Providing, fabricating and fixing in position colour anodised Aluminium framed louver with or without fixed glazing panels on side or top all as per Architect's drawings.Fabricated with Aluminium extruded Indal sections of weight specified in the drawing including providing and fixing clear float glass of required thickness and of approved manufacturer and fixed with U-tube glazing gasket snapon beadings,etc. including providing floor springs,locking arrangements etc all complete as per detailed architectural drawing.   |         | M.SQ |      |        |



| S.No | DESCRIPTION  | QTY   | UNIT | RATE | AMOUNT |
|------|--|-------|------|------|--------|
|      | Providing and fixing aluminum work for doors, windows, ventilators and partitions with extruded built up standard tubular sections/ appropriate Z sections and other sections of approved make conforming to IS: 733 and IS: 1285, fixing with dash fasteners of required dia and size, including necessary filling up the gaps at junctions, i.e. at top, bottom and sides with required EPDM rubber/ neoprene gasket etc. Aluminum sections shall be smooth, rust free, straight, mitred and jointed mechanically wherever required including cleat angle, Aluminum snap beading for glazing / paneling, C.P. brass / stainless steel screws, all complete as per architectural drawings and the directions of Engineer-in-charge. (Glazing, paneling and dash fasteners to be paid for separately): For fixed portion. Anodized aluminum (anodized transparent or dyed to required shade according to IS: 1868, Minimum anodic coating of grade AC 15). The rate should also includes providing PU sealent in both inside and outside | 0.20  | MT   |      |        |
|      | S/F 100mm brass lock for aluminium door including necessary cutting and making good etc. complete  | 4.00  | EACH |      |        |
|      | Providing and fixing aluminium tower bolts (100*10mm) ISI marked anodised (anodic coating not less than grade AC 10 as per IS : 1868 ) transparent or dyed to required colour or shade with necessary screws etc. complete :   | 4.00  | EACH |      |        |
|      | Providing and fixing glazing in aluminum door, window, ventilator shutters and partitions etc. with EPDM rubber / neoprene gasket etc. complete as per the architectural drawings and the directions of Engineer-in- Charge. (Cost of aluminum snap beading shall be paid in basic item): With float glass panes of 5.5 mm thickness.  | 21.00 | SQM  |      |        |
|      | Providing and fixing anodised aluminium grill (anodised transparent or dyed to required shade according to IS: 1868 with minimum anodic coating of grade AC 15) of approved design/pattern, with approved standard section and fixed to the existing window frame with C.P. brass/ stainless steel screws @ 200 mm centre to centre, including cutting the grill to proper opening size for fixing and operation of handles and fixing approved anodised aluminium standard section around the opening, all complete as per requirement and direction of Engineer-in-charge. (Only weight of grill to be measured for payment).  | 0.05  | M.T  |      |        |
|      | Providing and fixing aluminum tubular handle bar 32 mm outer dia, 3.0 mm thick & 2100 mm long with SS screws etc. complete as per direction of Engineerin-Charge. Anodized (AC 15 ) aluminum tubular handle bar  | 8.00  | EACH |      |        |
|      | Providing and fixing aluminium hanging floor door stopper ISI marked anodised (anodic coating not less than grade AC 10 as per IS : 1868) transparent or dyed to required colour and shade with necessary screws etc. complete. With twin rubber stopper   | 4.00  | EACH |      |        |

| S.No           | DESCRIPTION  | QTY   | UNIT | RATE | AMOUNT |
|----------------|--|-------|------|------|--------|
|                | Providing and fixing double action hydraulic floor spring of approved brand and manufacture IS : 6315 marked, for doors including cost of cutting floors as required, embedding in floors and cover plates with brass pivot and single piece M.S. sheet outer box with slide plate etc. complete as per the direction of Engineer-in-charge. With Brass cover Plate  | 5.00  | EACH |      |        |
|                | Providing and fixing 12 mm thick pre laminated particle board flat pressed three layer or graded wood particle board conforming to IS: 12823 Grade I Type II, in paneling fixed in aluminum doors, windows shutters and partition frames with C.P. brass / stainless steel screws etc. complete as per architectural drawings and directions of Engineer-inCharge. Pre-laminated particle board with decorative lamination on both sides   | 12.00 | SQM  |      |        |
|                | 24 mm thick factory made PVC door shutters made of styles and rails of a uPVC hollow section of size 59x24 mm and wall thickness 2 mm (± 0.2 mm) with inbuilt edging on both sides. The styles and rails mitred and joint at the corners by means of M.S. galvanised/ plastic brackets of size 75x220 mm having wall thickness 1.0 mm and stainless steel screws. The styles of the shutter reinforced by inserting galvanised M.S. tube of size 20x20 mm and 1 mm (± 0.1 mm) wall thickness. The lock rail made up of 'H' section, a uPVC hollow section of size 100x24 mm and 2 mm (± 0.2 mm) wall thickness, fixed to the shutter styles by means of plastic/galvanised M.S. 'U' cleats. The shutter frame filled with a uPVC multi-chambered single panel of size not less than 620 mm, having over all thickness of 20 mm and 1 mm (± 0.1 mm) wall thickness. The panels filled vertically and tie bar at two places by inserting horizontally 6 mm galvanised M.S. rod and fastened with nuts and washers, complete as per manufacturer's specification and direction of Engineer-in-charge. (For W.C. and bathroom door shutter). |       | SQM  |      |        |
|                | Providing and fixing cup board shutters 25 mm thick, with Pre-laminated flat pressed three layer particle board or graded wood particle board IS: 12823 marked, exterior grade (Grade I Type II), having one side decorative lamination and other side balancing lamination, including IInd class teak wood lipping of 25 mm wide x12 mm thick with necessary screws and bright finished stainless steel piano hinges, complete as per direction of the Engineer-in-Charge   |       | SQM  |      |        |
| <b>ROOFING</b> |  |       |      |      |        |

| S.No              | DESCRIPTION   | QTY   | UNIT | RATE | AMOUNT |
|-------------------|---|-------|------|------|--------|
|                   | <p>Supplying and embedding P.V.C rain water pipes of approved quality embedded inside the RC columns/masonry in position with all necessary specials like shoes, bends or any other specials required to suit site conditions etc., jointed with wavin cement and lubricants with necessary MS clamps, brackets, bolts and nuts all complete as directed.</p> <p>110mm dia-6kg/sq.cm"</p>   | 24.00 | R.M  |      |        |
|                   | <p>Providing corrugated G.S. sheet roofing including vertical / curved surface fixed with polymer coated J or L hooks, bolts and nuts 8 mm diameter with bitumen and G.I. limpet washers or with G.I. Limpet washers filled with white lead, including a coat of approved steel primer and two coats of approved paint on overlapping of sheets complete (up to any pitch in horizontal/ vertical or curved surfaces), excluding the cost of purlins, rafters and trusses and including cutting to size and shape wherever required. 0.80 mm thick with zinc coating not less than 275 gm/m<sup>2</sup></p> | 41.00 | SQM  |      |        |
| <b>PLASTERING</b> |   |       |      |      |        |
|                   | <p>Prepare surfaces and plaster with CM 1:3(1 cement, 3 sand), 12mm minimum thick (sponge finish) to ceiling sides and soffit of beams and columns and other interior and exterior RCC surfaces not contiguous to masonry.</p>  | 54.00 | M.SQ |      |        |
|                   | <p>Prepare surfaces and plaster with CM 1:5(1 cement, 5 sand), 12mm minimum thick to all interior faces of walls (sponge finish) including RCC surfaces not contiguous to masonry. Necessary internal grooves of size 10mmx10mm shall be carried out as shown/directed by engineer-in-charge.</p>   |       | M.SQ |      |        |
| <b>PAINTING</b>   |   |       |      |      |        |
|                   | <p>Prepare surfaces and paint two coats of plastic emulsion paint of approved colour over two coats of Gypsum punning of 6 mm minimum thick and primer all complete as per manufacturers specifications to all ceilings in all floors.</p>  |       | M.SQ |      |        |
|                   | <p>Finishing with Deluxe Multi surface paint system for interiors and exteriors using Primer as per manufacturers specifications : Two or more coats applied on walls @ 1.25 ltr/10 sqm</p>   |       | M.SQ |      |        |
|                   | <p>Painting wood work with Deluxe Multi Surface Paint of required shade. Two or more coat applied @ 0.90 ltr/10 sqm over an under coat of primer applied @0.75 ltr/10 sqm of approved brand and manufacture</p>   | 18.00 | M.SQ |      |        |

| S.No               | DESCRIPTION  | QTY    | UNIT   | RATE | AMOUNT |
|--------------------|--|--------|--------|------|--------|
|                    | Painting Steel work with Deluxe Multi Surface Paint to give an even shade. Two or more coat applied @ 0.90 ltr/ 10 sqm over an under coat of primer applied @ 0.80 ltr/ 10 sqm of approved brand and manufacture   | 12.00  | M.SQ   |      |        |
|                    | Providing and applying plaster of paris putty of 2 mm thickness over plastered surface to prepare the surface even and smooth complete.  |        | M.SQ   |      |        |
|                    | Removing white or colour wash by scrapping and sand papering and preparing the surface smooth including necessary repairs to scratches etc. complete   | 737.00 | M.SQ   |      |        |
|                    | Prepare surfaces and paint three coats of 'Apolite Apex' paint of approved colour and manufacturer over approved primer to exterior faces of walls sunshades, facias, fins, drops etc all as per detailed manufacturer's specification at all floors.  | 737.00 | M.SQ   |      |        |
| <b>DISMANTLING</b> |  |        |        |      |        |
|                    | Dismantling plastered brickwalls in cement mortar including cleaning, stacking the useful materials as directed by engineer-in-charge and dumping the dismantled debris as indicated at site, levelling, consolidating, all complete as directed and disposing the debris away from site all complete as directed.   | 1.00   | M.CUBE |      |        |
|                    | Dismantling the existing RCC concrete including cutting the reinforcement, stacking the useful materials as directed by engineer-in-charge, dumping the dismantled debris as indicated at site, leveling, consolidating, all complete as directed and disposal of debris away from site all complete.  |        | M.CUBE |      |        |
|                    | Dismantling Aluminium partition including disposing the debris away from site as directed by engineer in charge all complete.  | 4.00   | SQM    |      |        |
|                    | Dismantling Tile Flooring and Walls and disposing the debris away from site all complete as directed.  | 1.00   | M.SQ   |      |        |
| <b>PATHWAY</b>     |  |        |        |      |        |
|                    | Providing and laying cement concrete paver blocks of thick 80mm made out of M25 design mix of shape and profile as approved by architect .The rate should include cost of necessary excavation, RIVER SAND upto a depth of 50mm pointing in CM 1:3 all complete as directed.(For purpose of payment total laid area in length multiplied by width in plan will be paid.) Tenderer to submit necessary pamphlets along with tender. | 30.00  | M.SQ   |      |        |
| <b>PLUMBING</b>    |  |        |        |      |        |
| <b>A</b>           | <b><u>SANITARYWARE AND CP FITTINGS</u></b>   |        |        |      |        |
|                    | Note:1 Bidder may add items thought necessary at the end of this BOQ along with the quantities and rate.   |        |        |      |        |

| S.No | DESCRIPTION   | QTY | UNIT | RATE | AMOUNT |
|------|---|-----|------|------|--------|
|      | Note:2 Rates under Supply and Fixing will include (a). Cost of specified material with taxes and transpoting to site, (b). stacking and storing them at site, (c.) Lead and lift to convey the materials with in the site for installation of materials in their position as needed (d.) Cutting the masonry or concrete surfaces to facilitate fixing (e.) Restoring damaged portions to their original condition with supply of materials like cement, river sand, stone chips, brick etc. (f.) convey all the broken materials taken out of damaged portion within the toilet & shaft area by head load via staircase, to be dumped out of the work site for onward clearance by another agency (g.) all the works are to be carried out as per description mentioned against each item of work mentioned in schedule of quantities (h.) all tools and plants needed for the job to be brought in by the contractor at their cost including maintenance expenses, replacement at their cost wherever required - either in full or in part (i.) fixing materials like rackets, screws, bolts, nuts etc. |     |      |      |        |
| 1    | Supplying,installing,testing and commissioning of <b>Parryware make cascade NXT range white/popular color wall mounted European Water closet with slim line dual flush cistern-"P" trap,Ultra solid seat cover with rubber buffers and flap including following accessories : brass screws with washer, pan connector, rag bolt/CI chair bracket with GI bolt and nuts etc.complete.</b> Works including cutting and making good the walls /floor wherever required, including cost and conveyance of all materials to the site, all labour charges, all taxes etc., complete finished item of work and as directed by the SiteEngineer/Project In-Charge. The side gap between ewc mouth and pan connector to be filled with silicon sealant.  |     |      |      |        |
| 1.1  | EWC-Wall mounted closet with"P"trap, Make-Parryware,Range-Cascade NXT,Model no-C0207  |     |      |      |        |
| 1.2  | Seat cover-Range-ultra solid seat cover,model no-C8140  |     |      |      |        |
| 1.3  | Slim line economy dual flush pvc cistern model no: C8109  |     |      |      |        |
| 1.4  | Pan Connector,Cp/Pvc connection tube  |     |      |      |        |
| 1.5  | Wallvit pan fittings-C8015  |     |      |      |        |
| 1.6  | 15mm cp brass angular stop cock with wall flange-Jaquar - Continental-model no-CON-053  |     |      |      |        |
| 1.7  | Sumo Chair Brackets-Parryware-C8166   |     |      |      |        |
| 1.8  | Providing and fixing of <b>cascade NXT White color EWC Wallvit pan set (Compactible With Differently Abled Persons Toilet)</b>  | 0   | Set  |      |        |
| 2    | Supplying,Storing,Leading, Installing,Testing and commissioning of <b>White Color Rectangular Wash basin.</b> Works including following accessories; 32mm dia CP brass waste coupling, 32mm dia CP brass bottle trap with extension pipe, 15mm dia CP brass Angle valve, CP connections tupe, CP extention nipple, CP wall flange, Fisher bolt/Rag bolt, and necessary all hardware materials like brass screws, washer and nuts etc. complete. Works including necessary cutting and making finishing the wall   |     |      |      |        |

| S.No | DESCRIPTION  | QTY | UNIT | RATE | AMOUNT |
|------|--|-----|------|------|--------|
|      | and floors wherever required etc. complete.  |     |      |      |        |
| 2.1  | Rectangular Wash basin -Parryware-Indus range-Size-550x450,model no:0471   |     |      |      |        |
| 2.2  | CP waste coupling - <b>Jaquar - Allied-Model no:705/709cp</b>  |     |      |      |        |
| 2.3  | CP Pillar cock with Auto closing system - <b>PRS-031</b>   |     |      |      |        |
| 2.4  | CP bottle trap - <b>Jaquar - Allied-Model no:769cp</b>   |     |      |      |        |
| 2.5  | 15mm cp brass angular stop cock with wall flange-Jaquar - Continental-model no-CON-053   |     |      |      |        |
| 2.6  | Cp connection tube,Rag bolt/bracket for basin  |     |      |      |        |
| 2.7  | Providing and fixing of White color Rectangular wash basin set   | QRO | Set  |      |        |
| 3    | Supplying,Storing,Leading, Installing,Testing and commissioning of <b>White Color Under Counter Oval Wash basin</b> . Works including following accessories; 32mm dia CP brass waste coupling, 32mm dia CP brass bottle trap with extension pipe, 15mm dia CP brass Angle valve, CP connections tupe, CP extention nipple, CP wall flange, basin brackets, and necessary all hardware materials like brass screws, washer etc. complete. Works including necessary cutting and making finishing the wall and floors wherever required etc. complete. |     |      |      |        |
| 3.1  | Oval Wash basin - Parryware - <b>Cascade NXT - Size-550x450, model no: C0407</b>   |     |      |      |        |
| 3.2  | CP waste coupling - <b>Jaquar - Allied-Model no:705/709cp</b>  |     |      |      |        |
| 3.3  | CP Pillar cock with Auto closing system - <b>PRS-031</b>   |     |      |      |        |
| 3.4  | CP bottle trap - <b>Jaquar - Allied-Model no:769cp</b>   |     |      |      |        |
| 3.5  | 15mm cp brass angular stop cock with wall flange-Jaquar - Continental-model no-CON-053   |     |      |      |        |
| 3.6  | Cp connection tube,Sumo bracket for basin  |     |      |      |        |
| 3.7  | Providing and fixing of White Color <b>Oval</b> wash basin set   | 1   | Set  |      |        |
| 4    | Supplying and fixing of 15mm <b>CP Pillar cock with Auto closing system</b> for wash trough & etc. complete.   |     |      |      |        |
| 4.1  | Jaquar-Pressmatic tap-model no:031   | 0   | Each |      |        |
| 5    | Supplying and fixing 15mm <b>CP Hand wash tap</b> for wash basin (Floor mounted type) etc. complete.   |     |      |      |        |
| 5.1  | <b>Jaquar-florentine-model no:5357</b>   | 0   | Each |      |        |
| 6    | Supplying, Storing, leading ,installing,testing and commissioning <b>Stainless steel sink with waste coupling</b> - Single bowl with single drain board manufactured from high quality premium SS304 stainless steel, supporting bracket with screws etc.complete.Works including cutting and making good the walls /floor wherever required, including cost and conveyance of all materials to the site, all labour charges, all taxes etc., complete, finished item of work and as directed by the SiteEngineer/ In-Charge.                        |     |      |      |        |

| S.No | DESCRIPTION  | QTY | UNIT | RATE | AMOUNT |
|------|--|-----|------|------|--------|
| 6.1  | a)SS sink with Singlebowl with drain board-40"X20"-Bowl size:20"X16"X8"-Parryware-model no:8531,   | 0   | Each |      |        |
| 7    | Supplying and fixing 15mm CP brass Sink cock with regular swinging spout(wall mounted) etc.complete  |     |      |      |        |
| 7.1  | Sink cock-Jaquar-Florentine-model no:5347cp  | 0   | Each |      |        |
| 8    | Supplying,installing, testing and commissioning of white color New magnum urinal with integrated spreader with cp connection pipe and elbow & nipple, waste coupling, 32mm bottle trap ,Fisher bolts/brackets,washers, screws etc.complete. Works including cutting and making good the walls /floor wherever required, cost including of conveyance of all materials to the site, all labour charges, complete.etc.complete |     |      |      |        |
| 8.1  | New magnum urinal - Parryware- 590x400x390 model no:0575   |     |      |      |        |
| 8.2  | Parryware-Urinal spreader-C8095cp  |     |      |      |        |
| 8.3  | Jaquar-Urinal Valve Auto Closing System with in built control cock-model no:077 cp   |     |      |      |        |
| 8.4  | CP bottle trap,CP waste coupling - Jaquar - Allied-Model no:769,705/709  |     |      |      |        |
| 8.5  | CP connection pipe,elbow & nipple  |     |      |      |        |
| 8.6  | Providing and fixing of White Color New magnum Urinal set  | 0   | Each |      |        |
| 9    | Supplying,installing,testing and commissioning of 15mm CP angle valve with flange including necessary screws for aqua guard etc.complete.  |     |      |      |        |
| 9.1  | Angle valve-Jaquar-Continental-model no:053cp  | 0   | Each |      |        |
| 10   | Supplying and fixing of CP brass angular stop cock with Health Faucet and 1 m flexible tube with wall hook,screws etc.complete.  |     |      |      |        |
| 10.1 | Jaquar-Allied-model no:573cp   |     |      |      |        |
| 10.2 | 15mm cp brass angular stop cock with wall flange-Jaquar - Continental-model no-CON-053   | 0   | Set  |      |        |
| 11   | Supplying and fixing 15mm CP Long body bib tap with flange for janitor closet areas etc. complete.   |     |      |      |        |
| 11.1 | Jaquar-continental-model no:107  | QRO | Each |      |        |
| 12   | Supplying and fixing of Jaquar make 15mm CP short body bib tap with flange for ewc closet areas etc. complete.   |     |      |      |        |
| 12.1 | CP Short body bib tap-Jaquar-Continental range-model no:037  | 0   | Each |      |        |
| 13   | Supplying,instaling,testing and commissioning of electric water heater with CP angle valve, Conection tube swith wall flange, clamped to the wall etc. complete  |     |      |      |        |
| 13.1 | 30lit.capacity water heater-Racold ariston model-fibre body  |     |      |      |        |

| S.No     | DESCRIPTION   | QTY | UNIT | RATE | AMOUNT |
|----------|---|-----|------|------|--------|
| 13.2     | 15mm cp brass angular stop cock with wall flange-Jaquar - Continental-model no-CON-053  | QRO | Each |      |        |
| 14       | Supplying and fixing Compact hand towell dispenser,accomadates 150 towels (Kimberly clark make) for wash basin fixing with necessary screws etc., complete  |     |      |      |        |
| 14.1     | Compact towell dispenser(Pearl white)-01132;size-270X190X115mm  |     |      |      |        |
| 14.2     | Kleenex multi fold towels-01221,1 packet=125 sheets   | QRO | Each |      |        |
| 15       | Supplying and fixing of Jaquar make Soap dispenser with glass bottle for wash basin areas etc. complete.  |     |      |      |        |
| 15.1     | Soap dispenser with glass bottle-Jaquar-Continental range-model no:ACN-1135N  | 0   | Each |      |        |
| 16       | Supplying and fixing of Jaquar make cp Double coat hook fixing with necessary screws etc., complete   |     |      |      |        |
| 16.1     | Jaquar-Kubix-model no:ACN-35761   | 0   | Each |      |        |
| 17       | Supplying and fixing exposed type Toilet paper holder with out flap fixing with necessary screws etc., complete   |     |      |      |        |
| 17.1     | Jaquar-continental-model no:1151N-cp  | 0   | Each |      |        |
| 18       | Supplying and fixing cp Towel ring- fixing with necessary screws etc., complete   |     |      |      |        |
| 18.1     | Jaquar-Continental-model no:1121BN  | 0   | Each |      |        |
| 19       | Supplying and fixing cp Towel rod- fixing with necessary screws etc., complete  |     |      |      |        |
| 19.1     | Jaquar-Continental-model no:1111cp  | QRO | Each |      |        |
| 20       | Supplying, fixing and commissioning of Urinal Granite partition allround polished of size 450x900x18mm/20mm thick,(shape as per architectural drg)using 2 nos ss clamps embedded in 150 x 150 PCC pocket etc.complete | 0   | Each |      |        |
| 21       | Supplying and fixing of approved make 6mm thick mirror- 450 x 750 mm size for wash trough areas - with Teak wood frame and water proofed plywood backing, including polishing etc. complete                           | 0   | Each |      |        |
| <b>B</b> | <b><u>INTERNAL DRAINAGE SYSTEM</u></b>  |     |      |      |        |



| S.No | DESCRIPTION  | QTY | UNIT | RATE | AMOUNT |
|------|--|-----|------|------|--------|
|      | Rates under Supply and Fixing will include (a). Cost of specified material with taxes and transporting to site, (b). stacking and storing them at site, (c.) Lead and lift to convey the materials with in the site for installation of materials in their position as needed (d.) Cutting the masonry or concrete surfaces to facilitate fixing (e.) Restoring damaged portions to their original condition with supply of materials like cement, river sand, stone chips, brick etc. (f.) convey all the broken materials taken out of damaged portion within the toilet & shaft area by head load via staircase, to be dumped out of the work site for onward clearance by another agency (g.) all the works are to be carried out as per description mentioned against each item of work mentioned in schedule of quantities (h.) all tools and plants needed for the job to be brought in by the contractor at their cost including maintenance expenses, replacement at their cost wherever required - either in full or in part (i.) fixing materials like rackets, screws, bolts, nuts etc.  |     |      |      |        |
| 1    | Supplying, fixing and testing of approved make of <b>10kg PVC pipes confirming to IS 4985-2000. and fittings</b> (moulded and fabriacted fittings ) such as tee, elbow, 'y' , coupler, etc <b>confirming to IS 7834 with latest amendment</b> for soil and waste pipe works in toilets and utility area,basement storm water drain etc. Pipes shall be laid in sunken floors as per approved drawings with gradient mentined in the drawings with proper brick pedestal supprotts. For laying the pipes in walls, before chasing, the pipe line routing shall be marked using chalk line with help of tupe level, wall cutting shall be done using wall cutting machine, and chasing to be done using electric jack hammer machine. Cutting and chasing with hammer shall not be permitteted. Pipes and fittings shall be cleaned with pipe cleaners and joined by approved approved make solvent cement. After laying the pipes, before cloasing tthe pipes, gravity test to be conducted and got the approval from the site engineers. chased portitions shall be covered with cement mortar. Work includes making required size holes in brick walls wherever necessary and re do same with water proofing components to the entire satisfaction of site engineer.etc complete. All the stub outs shall be closed with proper end caps till of installation of sanitraywares and accessories etc. complete. |     |      |      |        |
| 1.1  | 40mm dia Sch-80 upvc pipe for flush valve drain  | 0   | RM   |      |        |
| 1.2  | 40mm dia   | 0   | RM   |      |        |
| 1.3  | 50mm dia   | 12  | RM   |      |        |
| 1.4  | 63mm dia   | 0   | RM   |      |        |

| S.No | DESCRIPTION   | QTY  | UNIT | RATE | AMOUNT |
|------|---|------|------|------|--------|
| 2    | Supplying, fixing and testing of approved make of SWR - B- Class PVC pipes and fittings confirming to IS 13592-1992. and fittings (available fittings in market and fabricated fittings ) such as tee, elbow, 'y' , coupler, etc. confirming to 14735 with latest amendment for soil and waste pipe works in toilets and utility area,etc. Pipes shall be laid in sunken for all floor toilets as per approved drawings with gradient mentioned in the drawings with proper supports.Wall cutting shall be done using wall cutting machine, and chasing to be done using electric jack hammer machine. Cutting and chasing with hammer shall not be permitted. Pipes and fittings shall be cleaned with pipe cleaners and joined by approved approved make solvent cement. After laying the pipes, before closing the pipes, gravity test to be conducted and got the approval from the site engineers. chased portions shall be covered with cement mortar. Work includes making required size holes in brick walls wherever necessary and re do same with water proofing components to the entire satisfaction of site engineer.etc complete. All the stub outs shall be closed with proper end caps till of installation of sanitarywares and accessories etc. complete. |      |      |      |        |
| 2.1  | 75mm dia  | 0    | RM   |      |        |
| 2.2  | 110mm dia   | 0    | RM   |      |        |
| 3    | Providing and Laying Plain cement concrete (1:4:8) encasing for internal pipes laid in sunken floor, 100mm thick around the pipes with the help of necessary wooden shuttering etc. complete.   |      |      |      |        |
| 3.1  | 75 to110mm dia  | 0.00 | M3   |      |        |
| 4    | Fabricating, supplying, and fixing of Truebore make 4mm wall thickness uPVC Floor traps, made out of 110mm dia PVC Pipe with single or multiple inlets of size 40mm to 75mm dia.(boss tee connections), outlets of sizes 63 mm to 75mm, with min.2" water seal, fixing in position, using cement concrete 100 mm around to full depth of trap/suspended in ceiling level with proper supports, including providing FRP matting at bottom, inlet and outlet etc, complete.   | 0    | Each |      |        |
| 5    | Supplying,fixing and testing of <b>PVC 'P' trap 110mm dia extension boss tee arrangements</b> with female thread fix with the Staninless steel heavy duty clean out in male thread with gasket and three ss screws/PVC heavy duty clean out for urinals, etc., complete   | 0    | Nos  |      |        |
| 6    | Supplying,fixing and testing of <b>Heavy duty Floor Clean Out which are provided in floors slab</b> ,with female thread fix with the SS/Pvc heavy duty clean out plug in male thread with gasket and 110mm dia boss tee arrangements etc. complete  |      |      |      |        |
| 6.1  | 75 mm dia   | 6    | Nos  |      |        |
| 6.2  | 110 mm dia  | 0    | Nos  |      |        |

| S.No                | DESCRIPTION   | QTY | UNIT | RATE | AMOUNT |
|---------------------|---|-----|------|------|--------|
| 7                   | <b>Drilling with core cutting</b> in RCC beams, slabs, floors etc.,for laying pipes and rendering the same in RCC 1:2:4, finishing the same to the satisfaction of the Owner or his authorized representative etc.,including nominal reinforcement where ever required, complete. The quoted rate shall also include for providing EPOXY based water proofing compound for sealing the joints around the pipes. Core cut shall be done using rebar detector after getting the approval from the structural consultant..   |     |      |      |        |
|                     | a) RCC beams  |     |      |      |        |
| 7.1                 | 25mm dia upto 50 mm   | QRO | Each |      |        |
| 7.2                 | 50mm dia upto 110 mm  | QRO | Each |      |        |
| 7.3                 | 110mm dia. upto 160 mm  | QRO | Each |      |        |
| 7.4                 | 160mm upto 250mm  | QRO | Each |      |        |
| 8                   | Fabricating brackets using Mild Steel flats or angles, cutting, welding, forming shapes, providing hot dip galvanizing for brackets, cutting pockets in masonry / concrete surfaces, grouting brackets in concrete of 1:2:4 mix, restoring the damaged portion to their original condition required materials etc. complete.  | 0   | Kg   |      |        |
| 9                   | Supplying and fixing of <b>pvc grating</b> of approved make, fixed over the floor trap. Works including cleaning of floor traps befor fixing the gratings. While fixing the gratings, flooring should be cutted to required size of grating,(not more than 2mm of the grating sizes) using tile cutter etc. complete. The gap should be fillied with colored white cement to match the flooring colour. The colour and shape of the gratings shall be got the approval from the architects/consultants  | 1   | Each |      |        |
| 10                  | Supplying and fixing of Chilly make CP Anti cockroach floor trap <b>gratings which consisting floor drain grating, inner filter and outfilter and rim</b> , fixed over the floor trap. Works including cleaning of floor traps befor fixing the gratings. While fixing the gratings, flooring should be cutted to required size of grating,(not more than 2mm of the grating sizes) using tile cutter etc. complete. The gap should be fillied with colored white cement to match the flooring colour. The colour and shape of the gratings shall be got the approval from the architects/consultants. To avoid damage of the cp gratings, acid cleaning of flooring shall be done before fixing of gratings. | QRO | Each |      |        |
| <b>CURTAIN WORK</b> |   |     |      |      |        |
|                     | 1.Two range of curtain cloth - Type 1 - II.   |     |      |      |        |
|                     | 2. Both for doors, windows and partions.  |     |      |      |        |
|                     | 3. Assorted colours plain & prints  |     |      |      |        |
|                     | 4.Stitched as per site/ size requirement  |     |      |      |        |
|                     | 5.Minor modifications in stitching as per site/ size requirement  |     |      |      |        |
|                     | 6.Preferred colour (Brown, Cream, Beige)  |     |      |      |        |

| S.No                 | DESCRIPTION   | QTY | UNIT | RATE | AMOUNT |
|----------------------|---|-----|------|------|--------|
|                      | 7.Curtain price (including cloth & curtain rod) to be quoted in Squire metre  |     |      |      |        |
|                      | 8.Stitching for each curtain to be absorb in the price of the cloth generally 2 meters.   |     |      |      |        |
|                      | 9.Fast colours, water wash  |     |      |      |        |
|                      | 10.Fabric density Non Transparent Composition   |     |      |      |        |
|                      | 11.Fabric of curtain shall be soft texture, great shading, drape effect and nice doobby.  |     |      |      |        |
|                      | 12.The bracket shall be side mounted and front mounted as required  |     |      |      |        |
|                      | 13.First rod mount is 3.5 inches from the wall.   |     |      |      |        |
|                      | 14.Where curtain used as a partition/ long length, sufficient support from ceiling should be provided to avoid sagging.   |     |      |      |        |
|                      | 15.Rate quoted for fully stitched Curtain with top nepha with punch holes after lining bucramreinforced with SS / PVC islets and lower nepha 200mm double turned.   |     |      |      |        |
|                      | Type -I (Surgical Curtain)  |     |      |      |        |
|                      | Curtain fabric weight shall be up to 275-300 (±5%) gsm<br>Composition of fabric shall be polyester yarn I.E. 300 denier fast colour sink age shall be (±5%) Weft and warp shall be polyester / cotton polyester mix   | 0   | M.SQ |      |        |
|                      | Type - II (Window & Door Curtain)   |     |      |      |        |
|                      | Curtain fabric weight shall be up to 250-275 (±5%) gsm<br>Composition of fabric shall be polyester yarn I.E. 300 denier fast colour sink age shall be (±5%) Weft and warp shall be polyester / cotton polyester mix   | 0   | M.SQ |      |        |
| <b>FALSE CEILING</b> |   |     |      |      |        |
| 5                    | Providing & Fixing of False ceiling shall be provided with Armstrong Lay in (Hot dipped galvanized steel) metal ceiling system 600 X 600 X 5 mm with standard perforation of 2.5 mm dia. (16% open space) and fleece with NRC of 70 & CAC 36 to be laid on Armstrong Grid system. Armstrong Orcal Lay in metal ceiling system consisting of 600 X 600 mm Lay in tiles of pre coated galvanized steel in 0.5 mm thickness in white colour with standard perforation of 2.5 mm dia. and open area of 16 %. The back of tiles should have black acoustical fleece with NRC of .70 & CAC 36 to be laid on Armstrong Grid system with 15 mm wide T section flanges Colour white having rotary stitching on the main Runner, 1200 mm & 600 mm cross Tees, fixed to the structural soffit by Butterfly clip hangers, suspension wires & anchor fasteners as per manufacturers specification. Suspension wires to be provided at every 600 mm c/c with two numbers ties on each anchor fastener, Perimeter trim of Trulok wall angle in white |     | M.SQ |      |        |

| S.No | DESCRIPTION   | QTY | UNIT | RATE | AMOUNT |
|------|---|-----|------|------|--------|
|      | colour secured to wall at 450 mm maximum centers.   |     |      |      |        |
|      | Providing and Laying kerb channel (Well ring) 120 cm wide and 75 mm thick of CC 1:3:6 over 150 mm thick compacted bed of CONCRETE of well rammed and consolidated and grouted with fine sand. |     | EACH |      |        |
|      | <b>TOTAL</b>  |     |      |      |        |

**SEAL OF THE TENDERER**

**SIGNATURE  
NAME AND ADDRESS OF TENDERER**

**RENOVATION OF OPD AT PRIMARY HEALTH CENTRE, EDACHERY AT KOZHIKODE DISTRICT, .KERALA**

**(ELECTRICAL WORKS)**

**PRICE SCHEDULE (1b) - EDACHERY, KOZHIKODE**

| <b>Sl. No</b> | <b>Description of work</b>   | <b>Unit</b> | <b>Qty</b> | <b>Unit Rate in Rs.</b> | <b>Total Rate in Rs.</b> |
|---------------|--|-------------|------------|-------------------------|--------------------------|
| 1             | <b>Point wiring in PVC conduit with modular type switch.</b>   |             |            |                         |                          |
|               | Wiring for light point/fan point/exhaust fan point /call bell point with 1.5 sq mm FR PVC insulated copper conductor single core cable in surface/recessed medium class PVC conduit, with modular switch, modular plate, suitable PVC box and earthing the point with 1.5 sq.mm FR PVC insulated copper conductor single core cable etc as required. |             |            |                         |                          |
|               | Group C  | Point       | 6          |                         |                          |
| 2             | <b>Wiring through PVC conduit</b>  |             |            |                         |                          |
|               | Wiring for circuit/submain wiring along with earth wire with the following sizes of FR PVC insulated copper conductor, single core cable in surface/recessed medium class PVC conduit as required. <b>(Make:Havells/Finolex/V-guard/Polycab)</b>   |             |            |                         |                          |
| a             | 2X1.5 sq.mm + 1X1.5 sq.mm earth wire   | Metre       | 40         |                         |                          |
| b             | 2X2.5 sq.mm + 1 X2.5 sq mm earth wire  | Metre       | 85         |                         |                          |
| c             | 2X4 sq.mm + 1X4 sq.mm earth wire   | Metre       | 0          |                         |                          |
|               |  |             |            |                         |                          |
| 2.1           | <b>Telephone wiring in existing conduit:</b>   |             |            |                         |                          |
|               | Supplying and drawing following pair 0.5 sq mm FR PVC insulated annealed copper conductor, unarmored telephone cable in the existing surface/ recessed steel/ PVC conduit as required.   |             |            |                         |                          |

| Sl. No | Description of work  | Unit  | Qty | Unit Rate in Rs. | Total Rate in Rs. |
|--------|--|-------|-----|------------------|-------------------|
| a      | 2 Pair   | Metre | 35  |                  |                   |
| 3      | <b>A/C point</b>   |       |     |                  |                   |
|        | <b>S/F 20A SPN MCB industrial socket outlet:</b><br>Supplying and fixing 20 amps, 240 volts, SPN industrial type, socket outlet, with 2 pole and earth, metal enclosed plug top alongwith 20 amps "C" curve, SP, MCB, in sheet steel enclosure, on surface or in recess, with chained metal cover for the socket out let and complete with connections, testing and commissioning etc. as required.(Make: Legrand/Havells/HPL) | Point | 0   |                  |                   |
|        |  |       |     |                  |                   |
| 4      | <b>Modular type blanking plate:</b>  |       |     |                  |                   |
|        | Supplying and fixing modular blanking plate on the existing modular plate & switch box excluding modular plate as required.(Make: Legrand/Havells/HPL)   | Each  | 4   |                  |                   |
|        |  |       |     |                  |                   |
| 5      | <b>Modular boxes, bases &amp; cover plate:</b>   |       |     |                  |                   |
|        | Supplying and fixing following size/modules, GI box along with modular base & cover plate for modular switches in recess etc as required.(Make: Legrand/Havells/HPL)   |       |     |                  |                   |
| a      | 3 module   | Each  | 7   |                  |                   |
| b      | 6 module   | Each  | 4   |                  |                   |
|        |  |       |     |                  |                   |
| 6      | <b>Modular type switch/socket:</b>   |       |     |                  |                   |
|        | Supplying and fixing following modular switch/socket on the existing modular plate & switch box including connections but excluding modular plate etc as required. (Make: Legrand/Havells/HPL)   |       |     |                  |                   |
| a      | 5/6 Amps switch  | Each  | 15  |                  |                   |
| b      | 3 pin 5/6 Amp socket outlet  | Each  | 15  |                  |                   |
| c      | 15/16 Amps switch  | Each  | 0   |                  |                   |
| d      | 6pin 15/16 Amps (universal) socket outlet  | Each  | 0   |                  |                   |
| e      | Telephone socket outlet  | Each  | 1   |                  |                   |
| 7      | <b>S/F PVC conduit:</b>  |       |     |                  |                   |

| Sl. No | Description of work   | Unit  | Qty | Unit Rate in Rs. | Total Rate in Rs. |
|--------|---|-------|-----|------------------|-------------------|
|        | Supplying and fixing of following sizes of medium class PVC conduit along with accessories in surface/recess including cutting the wall and making good the same in case of recessed conduit as required.(ISI Make)   |       |     |                  |                   |
| a      | 20 mm   | Metre | 50  |                  |                   |
| b      | 25 mm   | Metre | 20  |                  |                   |
| 8      | <b>ITC Fluorescent fitting directly on surface:</b><br>Installation, testing and commissioning of pre-wired, fluorescent fitting / compact fluorescent fitting/LED of all types, complete with all accessories and tube etc. directly on ceiling/ wall, including connection with 1.5 sq. mm FR PVC insulated, copper conductor, single core cable and earthing etc. as required. | Each  | 3   |                  |                   |
| 9      | <b>ITC Ceiling fan:</b><br>Installation, testing and commissioning of ceiling fan, including wiring the down rods of standard length (upto 30 cm) with 1.5 sq. mm FR PVC insulated, copper conductor, single core cable etc. as required.   | Each  | 3   |                  |                   |
| 10     | Supplying and fixing two module stepped type electronic fan regulator on the existing modular plate switch box including connections but excluding modular plate etc. as required.  | Each  | 3   |                  |                   |
| 11     | <b>CABLE SUPPLY, LAYING AND TERMINATION</b>   |       |     |                  |                   |
|        | Wiring for circuit/ submain wiring along with earth wire with the following sizes of FR PVC insulated copper conductor, single core cable in surface/ recessed medium class PVC conduit as required.  |       |     |                  |                   |
| a      | From Main to DB   |       |     |                  |                   |
|        | 2 X 4 sq. mm + 1 X 4 sq. mm earth wire  | Metre | 30  |                  |                   |
| 12     | Supply of 1x28W flourescent tube fitting sleek with decorative end cap, powder coated CRCA steel channel complete with all electrical accessories like electronic ballast, lamp holder, 28W T5 lamp etc complete as required. <b>(Philips TMS 540 HF / Wipro WRF 80128 SG / GE DMS 28 N N)</b>  | Each  | 2   |                  |                   |



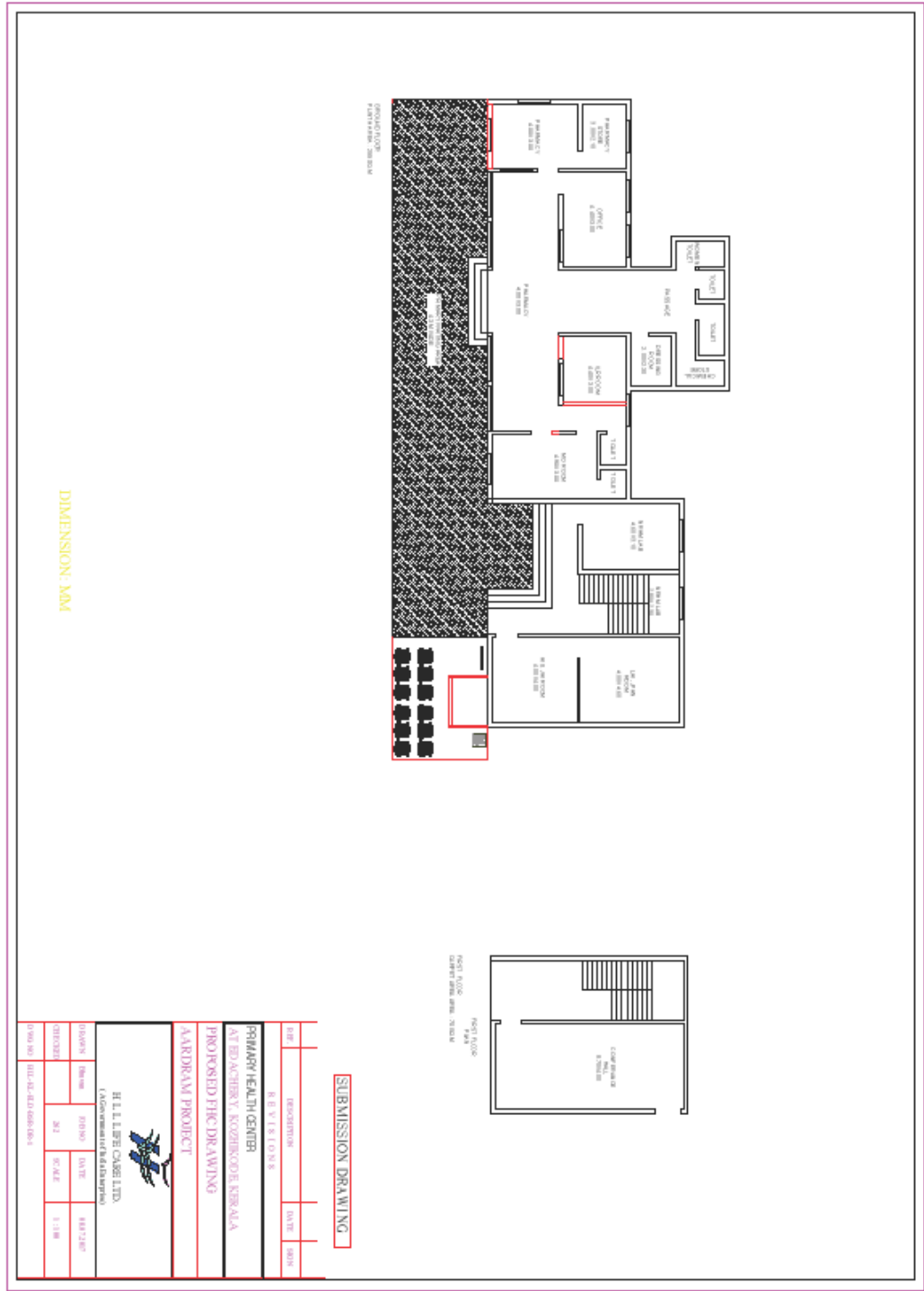
| Sl. No | Description of work  | Unit | Qty | Unit Rate in Rs. | Total Rate in Rs. |
|--------|--|------|-----|------------------|-------------------|
| 13     | Supplying and fixing PVC angle batten/batten holder with 18W CFL(Make:Havells/Philips) including connection as required.   | Each | 1   |                  |                   |
| 14     | Supply and installation of 1200 mm sweep Ceiling fan, white colour, 5 star rated as per BEE complete with blades, down rod, shackle, canopy etc(Make Havells/bajaj/usha/V-guard)   | Each | 3   |                  |                   |
| 15     | Supply and installation wall fan, white colour, 5 star rated as per BEE complete with its all accessories(Make Havells/bajaj/usha/V-guard)   | Each | 1   |                  |                   |
| 16     | <b>S/F SP &amp; N DB:</b>  |      |     |                  |                   |
|        | Supplying and fixing following way prewired SP&N MCB, distribution board of steel sheet for 240 volts on surface/recess complete with loose wire box, terminal connectors for all incoming and outgoing circuits, duly prewired with suitable size FR PVC insulated copper conductor up to terminal blocks, tinned copper bus bar, neutral link, earth bar, detachable gland plate, interconnections, powder painted including earthing etc.as required(But without MCB/RCCB/Isolator) (Make: Legrand/Havells/HPL) |      |     |                  |                   |
|        | 12 way SPN, double door  | Each | 1   |                  |                   |
| 16.1   | <b>S/F of DP ISOLATOR</b>  |      |     |                  |                   |
|        | Supplying and fixing following rating, double pole, (single phase and neutral), 240 volts, ISOLATOR having a sensitivity current upto 100 to 300 milliamperes in the existing MCB DB complete with connections, testing and commissioning etc, as required.(Make: Legrand/Havells/HPL)   |      |     |                  |                   |
|        | 40 A, DP isolator  | Each | 1   |                  |                   |
| 16.2   | <b>S/F of SP MCB</b>   |      |     |                  |                   |
|        | Supplying and fixing 6 amps to 10 amps rating, 240 Volts, "C" series, miniature circuit breaker suitable for lighting and other loads of following poles in the existing MCB DB complete with connections, testing and commissioning etc as required.(Make:  |      |     |                  |                   |

| Sl. No | Description of work   | Unit | Qty | Unit Rate in Rs. | Total Rate in Rs. |
|--------|---|------|-----|------------------|-------------------|
|        | <b>Legrand/Havells/HPL)</b>   |      |     |                  |                   |
|        | 6/10A SP MCB  | Each | 10  |                  |                   |
| 17     | <b>Miscellaneous Items</b>  |      |     |                  |                   |
| 17.1   | Miscellaneous electrical work, removing of existing conduits and interconnections of light,6A socket/16A socket/A/C point from existng DB   | LS   | 1   |                  |                   |
| 17.2   | Miscellaneous work for removing & supply of old 3 nos of 5A switch & 5A sockets and 2-bulb, 1-CFL with its all accessories only as per the direction of engineer in charge.[ISI MAKE] | LS   | 1   |                  |                   |
|        | <b>Total</b>  |      |     |                  |                   |

**SEAL OF THE TENDERER**

**SIGNATURE  
NAME AND ADDRESS OF TENDERER**

**SITE DRAWING (1a) - EDACHERY CIVIL**



**SITE DRAWING (1b) - EDACHERY  
ELECTRICAL**

