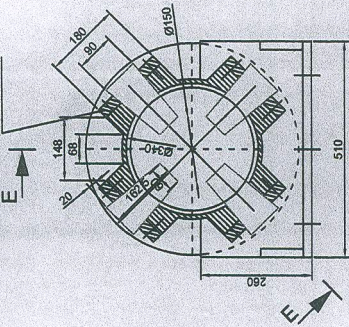
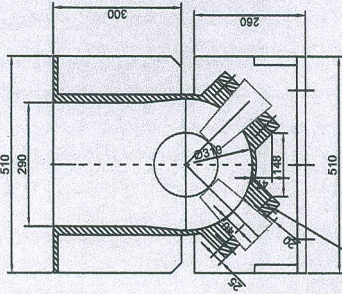
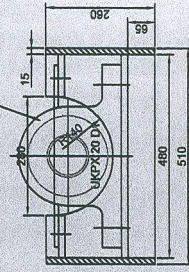


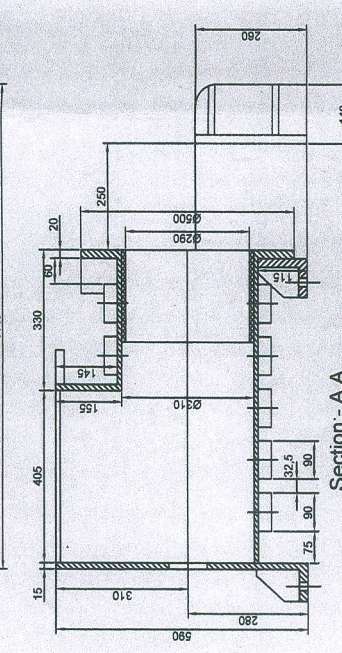
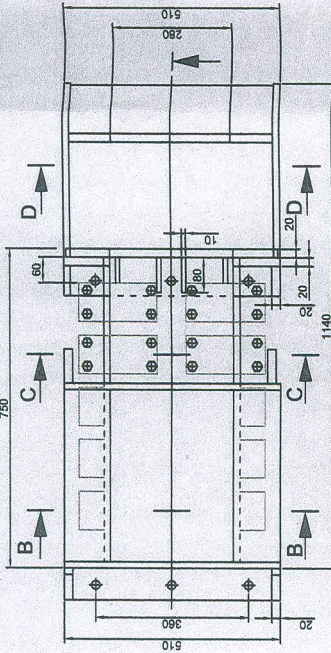
QTY: 14 NOS.  
 DETAIL - P  
 MATH: EN 24, Hrc 45, TIP Hardened  
 SEE DETAIL - P



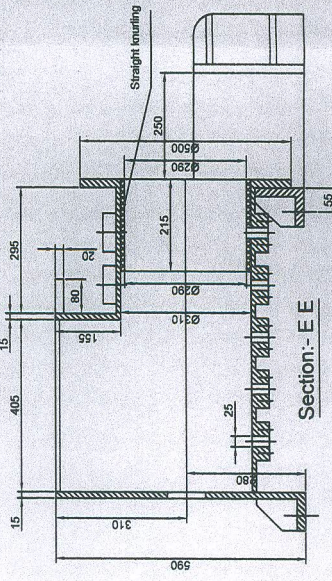
BEARING HOUSING ALIGNMENT



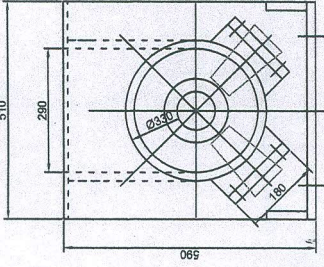
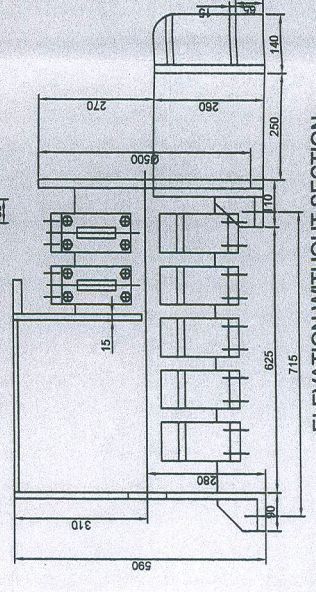
Section:- B B



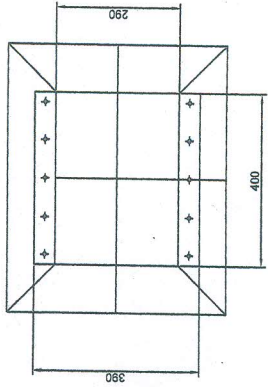
Section:- A A



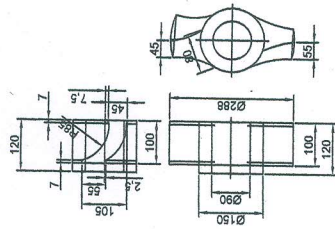
Section:- E E



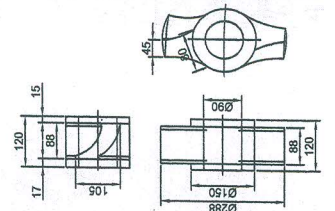
MATERIAL: CAST IRON	HLL Lifecare Limited. Thiruvananthapuram-5	NO.OFF.
DRAWN BY:	MAIN BODY	
CHECKED BY:	CONDOM CUTTING MAHINE(PARTS)	
APPROVED BY:		
DATE:	Drg.no:- HLL - F - 180-00	
SCALE:		
ALL DIMENSIONS ARE IN M.M		
		REV:-
		DATE:-
		SHEET NO 1 OF 2



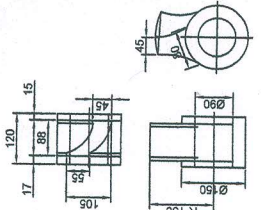
HOPPER  
Mati.- IS2062 with plating



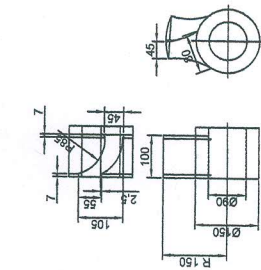
BLADE NO. 6  
Mati.- EN 24, Hrc 50



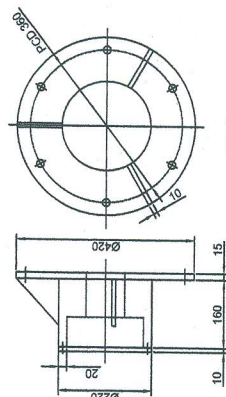
BLADE NO. 5  
QTY:- 1NO.  
Mati.- EN 24, Hrc 50



BLADE NO. 2 TO 4  
QTY:- 2NOS.  
Mati.- EN 24, Hrc 50

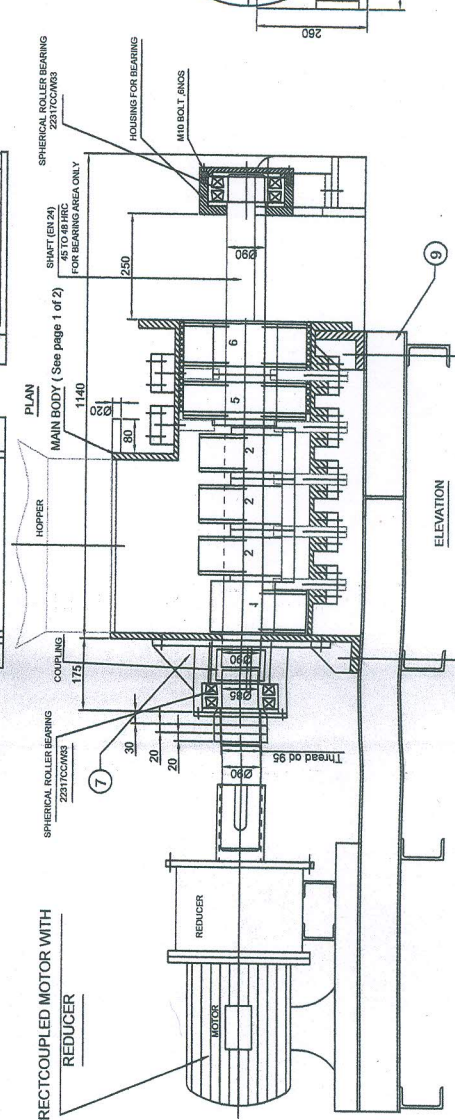


BLADE NO. 1  
QTY:- 1NO.  
Mati.- EN 24, Hrc 50



NO.-7  
REDUCER SIDE HOUSING

QTY:- 1NO.  
Mati.- IS 2062



ASSEMBLY FOR REFERENCE

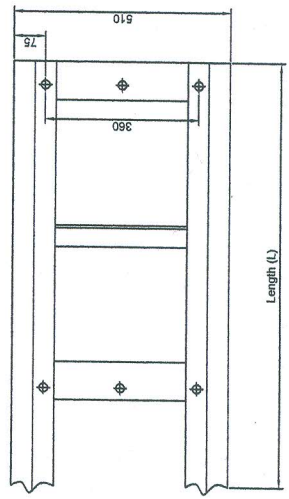
NOTE:- ALL JOINTS SHOULD BE WELDED

HLL Lifecare Limited.  
Thiruvananthapuram-5

MATERIAL:	NO.OFF.
DRAWN BY: P.rajap	
CHECKED BY:	
APPROVED BY:	
DATE:	
SCALE:	
ALL DIMENSIONS ARE IN M.M	

PAINTING:- BODY SHALL BE GIVEN 2 COATS OF POLYURETHANE PAINT, AFTER PROPER SURFACE TREATMENT & APPLYING 2 COATS OF PRIMER. (MAKE:- ASIAN/ EQUIVALENT, COLOR:- SKY BLUE)

BASE FRAME  
Mati:- IS 2062



Length of frame depend up on direct drive motor/reducer size

